

# How to configure Digi Wi-Point 3G for Modem Backup application

## Digi Wi-Point 3G Modem Cable

The cable provided only connects to RX, TX, & Ground on the DB9 connector – it is essentially a 3-wire connection.

Most modems will expect DTR before you can communicate with them.

You will need to disable DTR & DSR on a modem via AT commands.

Connect serially to the modem via terminal emulator such as Hyperterm using the following:

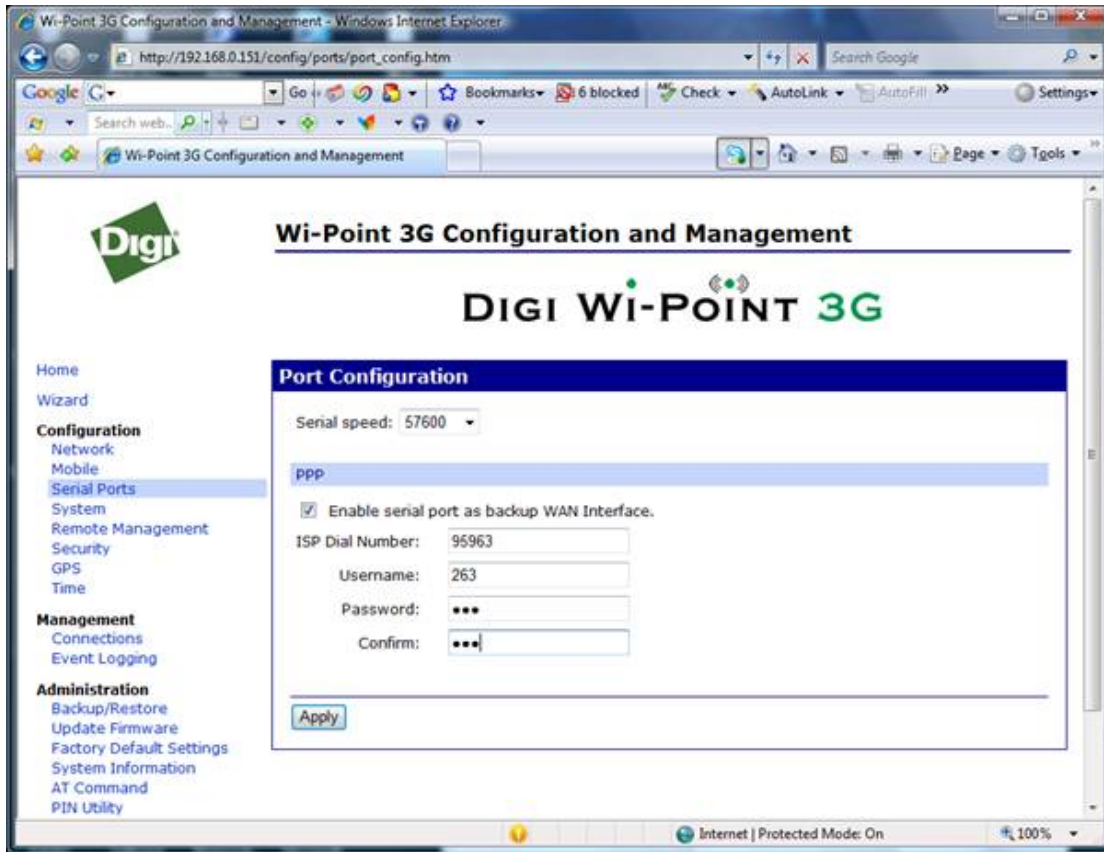
Serial settings:

Baud: 57600  
Charters: 8  
Parity: None  
Stop Bits: 1

```
Send      AT
Recv      ok
Send      at&f          // set factory default configurations
Recv      ok
Send      at&d          // tell modem to ignore DTR signal
Recv      ok
Send      at&w          // store current configuration
Recv      ok
```

The modem is now ready to be connected to the WiPoint3G.

See below for an example on how to configure the Digi Wi-Point 3G for modem backup.



Go to Web GUI-> Configuration-> Serial Ports-:

1. Change serial speed match with V92 modem, for example, when you use a 56K modem, you should setup serial speed to 57600
2. Enable serial port as backup WAN interface
3. Input correct dial number/username/password. For example:  
Dial number:95963  
Username:263  
Password:263
4. Click Apply and reboot the device to save the configuration.

**Note:**

WiPoint3G only uses **CHAP** authentication. Configure PPP server for CHAP.

[www.digi.com](http://www.digi.com)

© 2008 Digi International Inc.



[www.digi.com](http://www.digi.com)

© 2008 Digi International Inc.

