

1

2

3

4

5

A

A

B

B

C

C

D

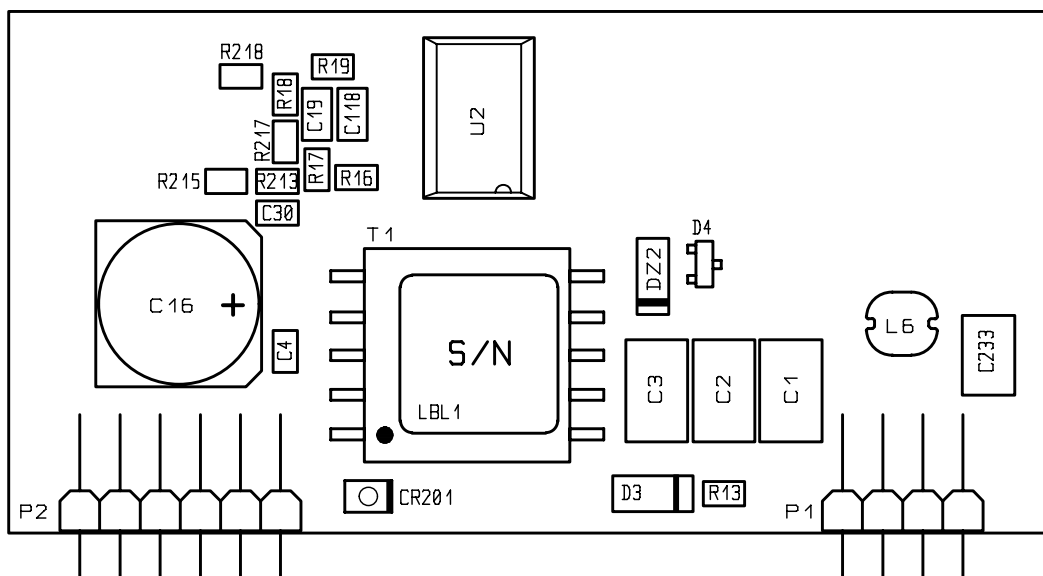
D

E


E

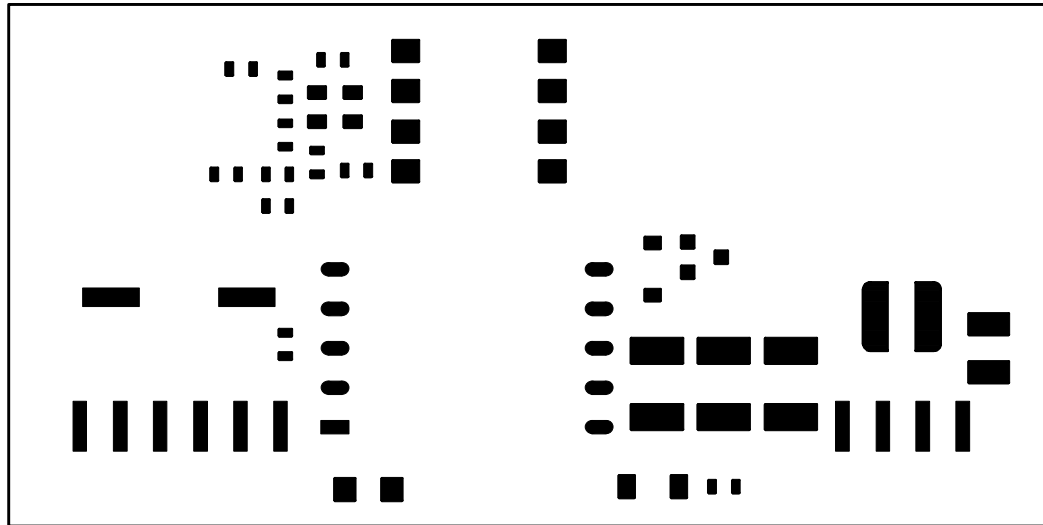
F

F

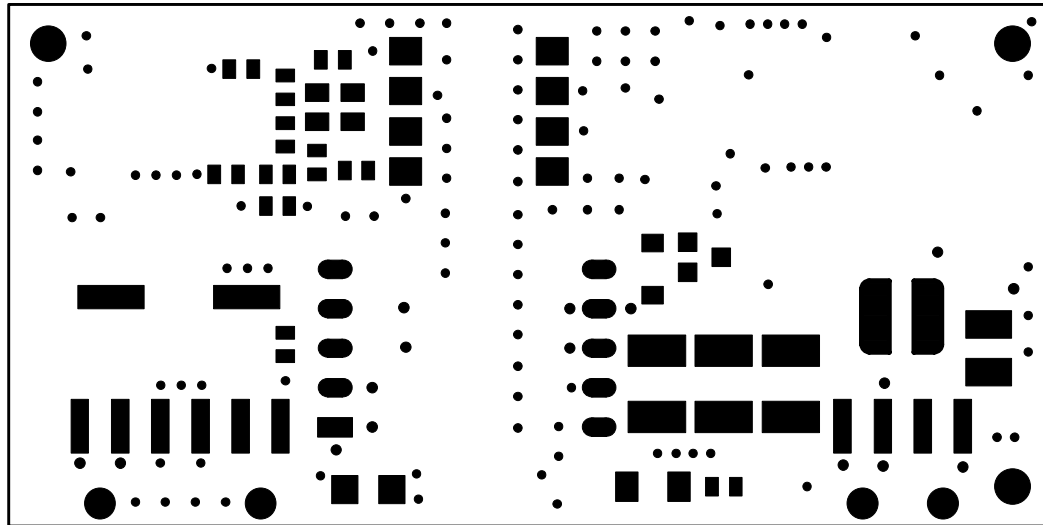


All rights reserved © Digi International Inc.

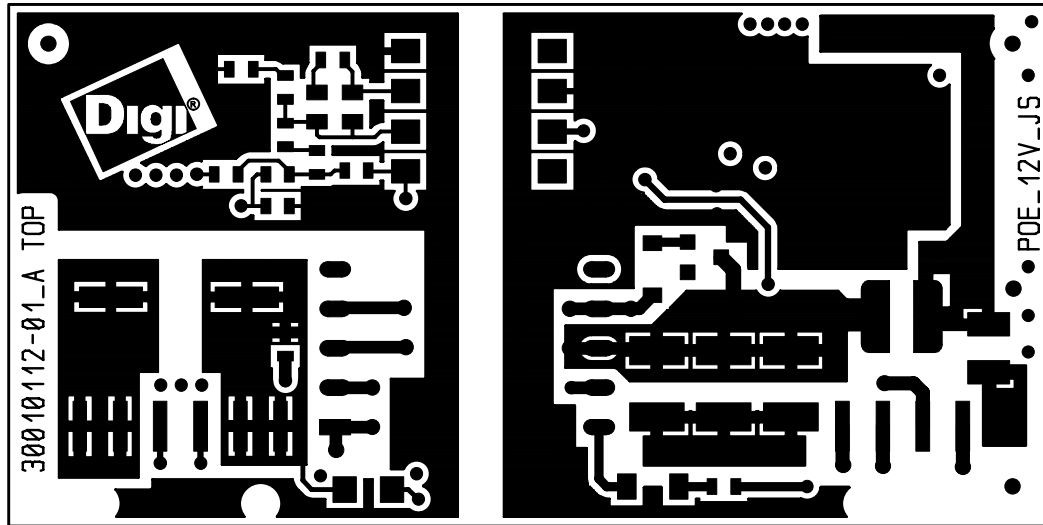
Usable for:				Scale: 1.5		Filename: POE_12V_JS.pcb		
				POE Application Kit Note: This layout version is for reference only. Some parts may not be equipped or may have different values.				
				Date	Name	Placement TOP Side		
				Designer	09.10.2008			SC
				Approved				
				ISO				
						Partnumber:	Sheet	
A	Initial Layout	09.10.08	SC			30010114-01		A
Rev.	Modification	Date	Name			Provided for:	of	
							2	



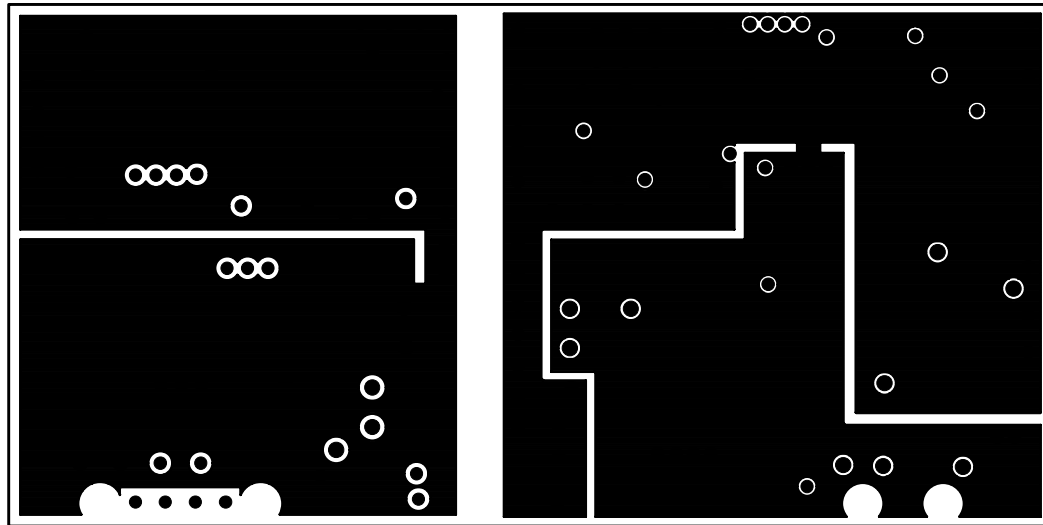
POE_12V_JS Paste TOP
09.10.08



POE_12V_JS Solder Mask TOP
09.10.08



POE_12V_JS Layer 1 TOP
09.10.08



POE_12V_JS Layer2 GND
09.10.08

