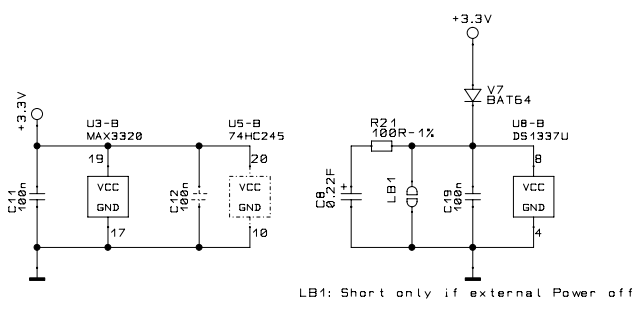
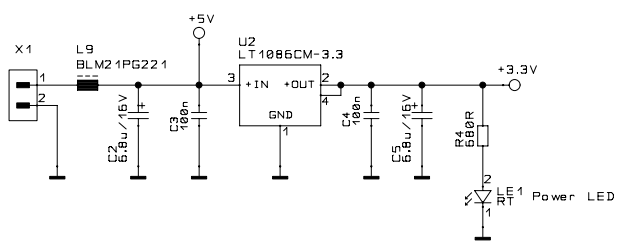
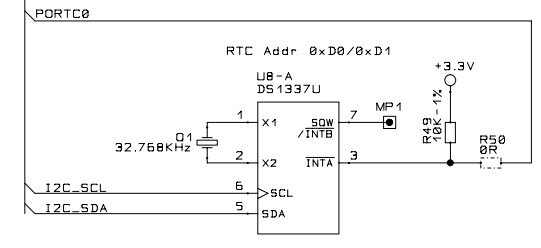
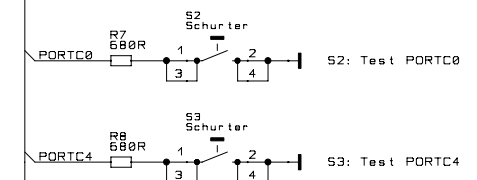
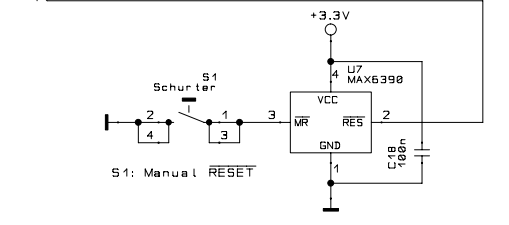
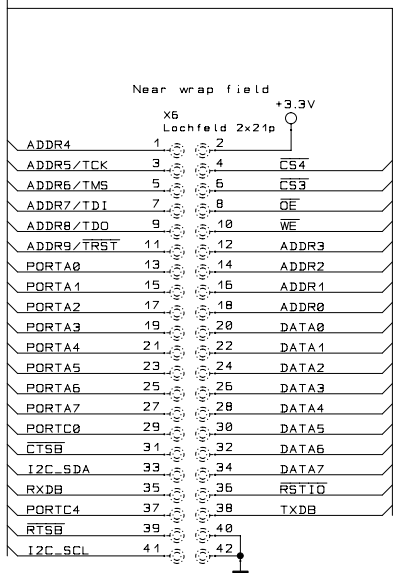


Note 1:
JP1 must be removed for normal operation. Otherwise JTAG mode is always enabled and the module ConnectCore 7U or ConnectCore 9U may hang, i.e. not boot. JP1 must be plugged, to use the JTAG port. For customer base boards it is very important to implement this jumper. Otherwise software updates over the JTAG interface are not available.

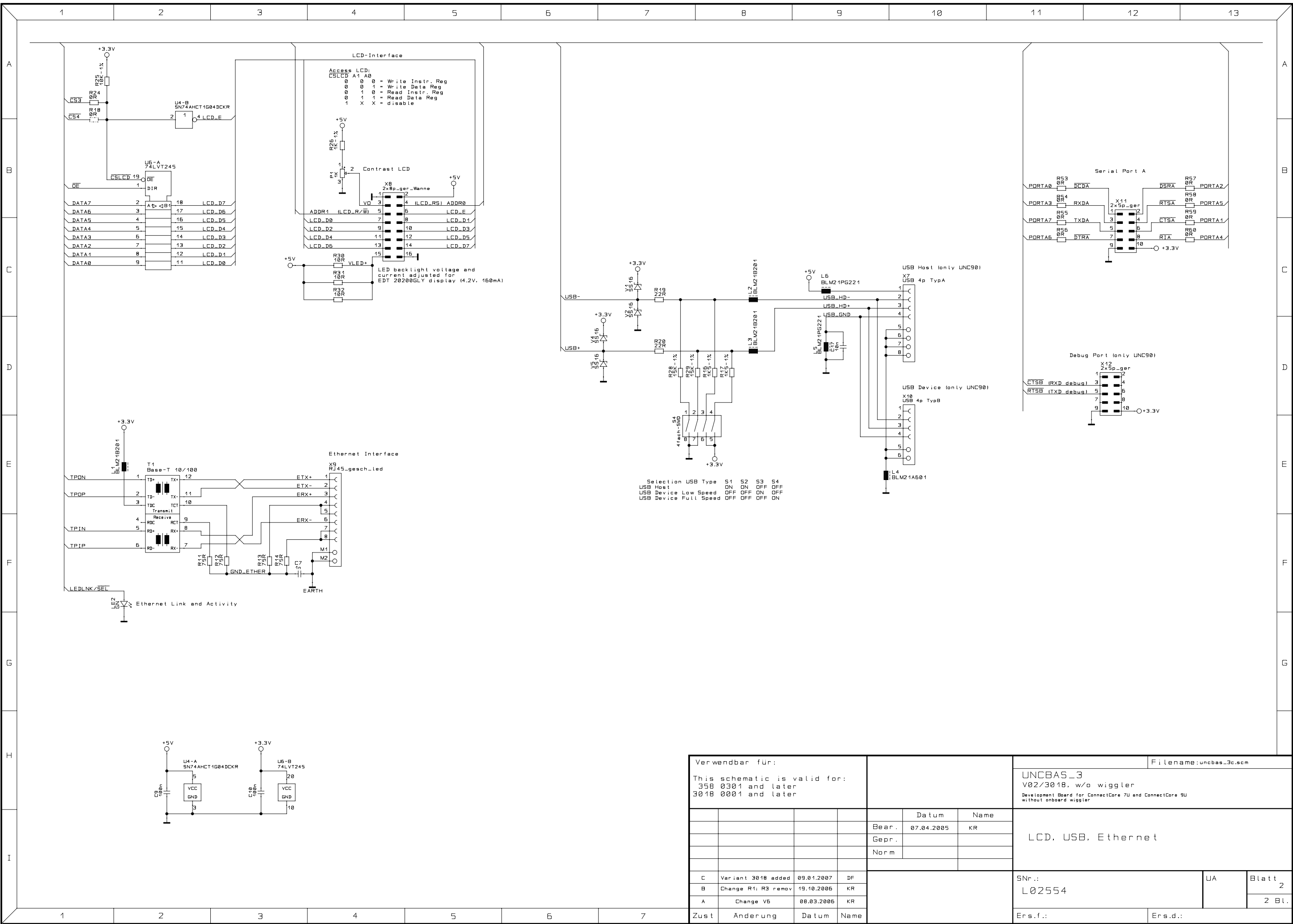
Note 2:
JTAG-Booster/Multi-ICE/LPT-Cable must be removed, if JP1 is not plugged (in normal mode)

Note 3:
JTAG-Booster and Multi-ICE must be removed, if LPT-Cable is connected.



Verwendbar für:		Dateiname: uncbas_3c.scm	
This schematic is valid for: 358 0301 and later 3018 0001 and later		UNCBAS_3 V02/3018, w/o wiggler Development Board for ConnectCore 7U and ConnectCore 9U without onboard wiggler	
	Datum	Name	
	Bear.	07.04.2005	KR
	Gepr.		
	Norm		
C Variant 3018 added		09.01.2007	DF
B Change R1: R3 remov		19.10.2006	KR
A Change V6		08.03.2006	KR
Zust	Anderung	Datum	Name
Ers.f.:		Ers.d.:	
Snr.:		UA	Blatt
L02554			1
		2 Bl.	



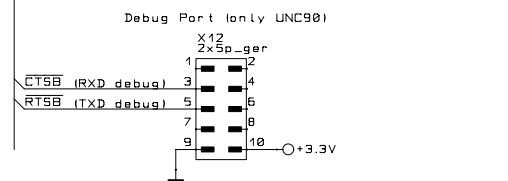
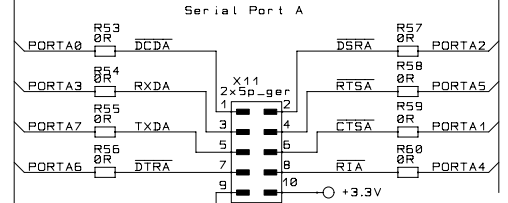


```

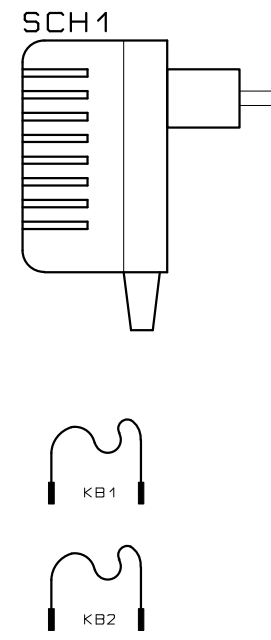
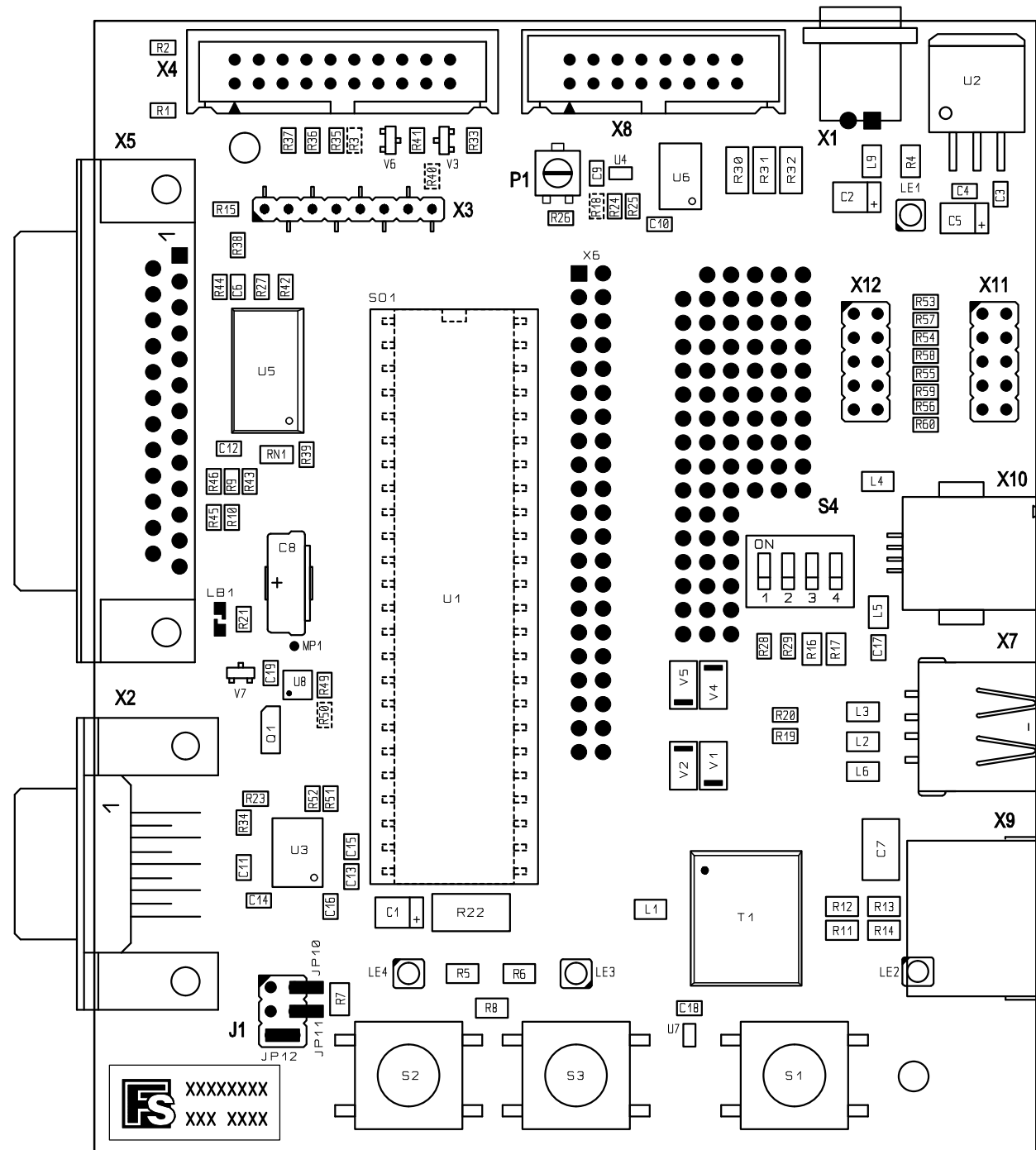
Access LCD:
CSLCD A1 A0
0 0 0 = Write Instr. Reg
0 0 1 = Write Data Reg
0 1 0 = Read Instr. Reg
0 1 1 = Read Data Reg
1 X X = disable
  
```

LED backlight voltage and current adjusted for EDT 20200GLV display (4.2V, 160mA)

Selection USB Type S1 S2 S3 S4
 USB Host ON ON OFF OFF
 USB Device Low Speed OFF OFF ON OFF
 USB Device Full Speed OFF OFF OFF ON

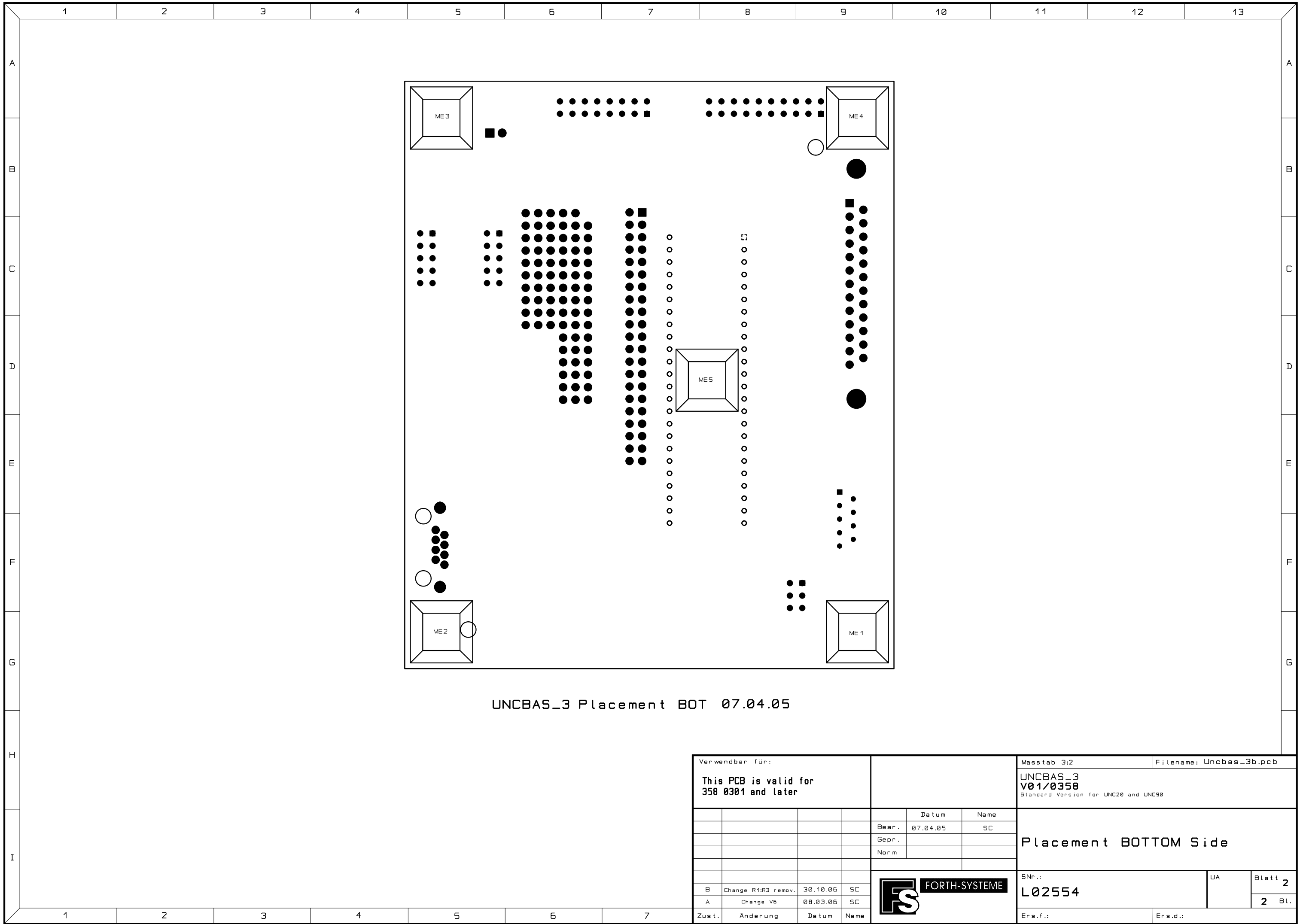


Verwendbar für:		Filename: uncbas_3c.scm	
This schematic is valid for: 358 0301 and later 3018 0001 and later		UNCBAS_3 V02/3018, w/o wiggler Development Board for ConnectCore 7U and ConnectCore 9U without onboard wiggler	
	Datum	Name	
Bear.	07.04.2005	KR	
	Gepr.		
	Norm		
LCD, USB, Ethernet			
C	Variant 3018 added	09.01.2007	DF
B	Change R1: R3 remov	19.10.2005	KR
A	Change V6	08.03.2005	KR
Zust	Anderung	Datum	Name
Snr.: L02554		UA	Blatt 2
Ers.f.:		Ers.d.:	



UNCBAS_3 Placement TOP 07.04.05

Verwendbar für:		Masstab 3:2		Filename: Uncbas_3b.pcb	
This PCB is valid for 358 0301 and later		UNCBAS_3 V01/0358 Standard Version for UNC20 and UNC90			
		Datum	Name	Placement TOP Side	
		Bear. 17.05.05	SC		
		Gepr.			
		Norm			
B	Change R1;R3 remov.	30.10.06	SC	SNr.: L02554	UA
A	Change V6	08.03.06	SC		
Zust.	Änderung	Datum	Name	Blatt 1 2 Bl.	
				Ers.f.:	Ers.d.:



UNCBAS_3 Placement BOT 07.04.05

Verwendbar für:				Masstab 3:2		Filename: Uncbas_3b.pcb		
This PCB is valid for 358 0301 and later				UNCBAS_3 V01/0358 Standard Version for UNC20 and UNC90				
				Datum	Name	Placement BOTTOM Side		
				Bear. 07.04.05	SC			
				Gepr.				
				Norm				
B	Change R1;R3 remov.	30.10.05	SC			SNr.:	UA	Blatt 2
A	Change V6	08.03.05	SC			L02554	2 Bl.	
Zust.	Änderung	Datum	Name	Ers.f.:		Ers.d.:		