



Digi Connect® WAN Application Helper

Configuring and Testing the Digi Connect WAN - SunCom

IP Address and Pre-configuration Information

Ethernet Connectivity: Connect your workstation or device to the Digi Connect WAN via one of these methods:

- Direct from workstation to Digi Connect WAN via an Ethernet crossover cable
- Via network hub or switch using a straight-thru Ethernet cable

Ethernet Port IP Addressing: Follow the Quick Start Guide and assign the Digi Connect WAN an IP Address. In most cases a static IP address is desired.

DHCP Server: The Digi Connect WAN/VPN includes a DHCP server and can provide IP address configuration to remote devices and/or workstations. DHCP server is on by default and is configured to provide workstation IP addresses starting at 192.168.1.100.

Static IP Addresses: If static IP addresses are used, disable the Digi Connect WAN DHCP server via Configure > Network > DHCP Server Settings and follow these directions:

1. In order to properly communicate via the Digi Connect WAN, your workstation should be in the same subnet as the Digi Connect WAN. The simplest way to accomplish this is to use the Digi Connect WAN's DHCP server. If you are using the DHCP server, and the Digi device is at IP address 192.168.1.1, you should configure your workstation to be something like:
 - IP address: 192.168.1.2
 - Subnet mask: 255.255.255.0
 - Default gateway: 192.168.1.1 (i.e. the IP address of Digi Connect WAN)
2. As shown above, any device using the Digi Connect WAN as a gateway via the cellular wireless network must have its default gateway configured to the Digi Connect WAN's Ethernet port IP address.
3. DNS Server IP addresses: If you plan to "browse" the Internet or make other outbound connections that utilize DNS names (e.g., www.digi.com), the carrier's DNS server IP addresses should be entered into the workstation's IP configuration. For example, for most Cingular® Blue APN types use 209.183.48.10 & .11. DNS info can be confirmed once the Digi Connect WAN has connected to the cellular network using the Digi Connect WAN WebUI via Administration > System Info > Mobile.

Changing the Digi Connect IP Address: The Digi Connect WAN IP address settings can be changed using the built-in WebUI or via command line.

Via Command Line: Use either the console port and a terminal emulation program or telnet to the Digi Connect WAN's IP address. Use the "set net" command similar to:

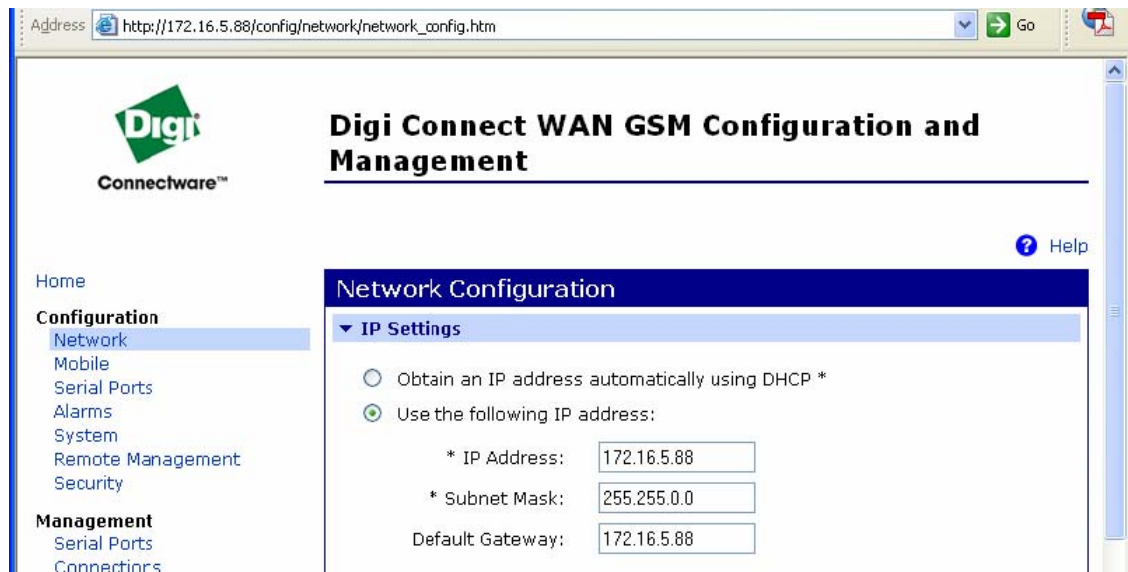
```
set net ip=172.16.5.88 mask=255.255.0.0 gateway=172.16.5.88
```

Configuring and Testing the Digi Connect WAN

Type `set net` with no parameters to verify the settings. Reboot the Digi Connect WAN by either re-powering or via the `boot action=reset` command.

Via WebUI: Point your browser to the Digi Connect WAN's Ethernet port IP address, select Configuration > Network and enter the desired settings. The Digi Connect WAN must be rebooted for the changes to take effect.

For example:



Press **Apply**, and then **reboot** the Digi Connect WAN for changes to take effect. You will lose connectivity to the unit until you reconfigure your workstation to be in the same subnet as the Digi Connect WAN; or use DHCP.

APN Configuration: In order to communicate on the GSM IP network the Digi Connect WAN must be configured for a certain Access Point Name (APN) type. In simple terms, the APN determines what type of IP address is provided to the Digi Connect WAN's mobile interface and how the provider's network communicates to the corporate LAN or application. The SIM card is provisioned to communicate and authenticate to the APN. This information must be worked out with your provider before you begin testing.

The two most important items to determine about an APN are: (1) is whether mobile terminated data required (i.e., does a host initiate the connection to the mobile device?) and (2) what type of IP addressing is required (e.g., is a public static IP address required?).

Connecting the Digi Connect WAN

1. Ensure the SIM is in place. If not, insert the SIM into the SIM garage.
2. Attach the antenna to the Digi Connect WAN. Place the Digi Connect WAN and/or antenna in a location that will ensure the best signal.

Configuring and Testing the Digi Connect WAN

3. Connect the Digi Connect WAN Ethernet port to your workstation or device in the method mentioned above (either via hub/switch or direct via crossover Ethernet cable).

4. Apply power to the Digi Connect WAN. After a few minutes observe the following:

a. Green Ethernet Link LED located on the Ethernet port should be on. If not, make sure you are using the proper cable.

b. Signal Strength LEDs on top of unit should show 2-4 LEDs. If not, try repositioning the antenna and unit if necessary. Do not extend the antenna cable; instead, reposition the Digi Connect WAN unit itself via longer Ethernet cable connection.

c. Activity LED will be on solid for a few moments then go off.

d. The Wireless Link LED on top of unit should go on solid once the APN type is properly configured. If not, verify the APN provisioning via Configuration > Mobile. Make sure it is set for the proper APN configuration. There are four primary SunCom APNs:

i. Proxy APN

ii. Public APN

iii. Internet APN

iv. Custom APN

Please check with SunCom to make sure the proper APN type is being used for your application.

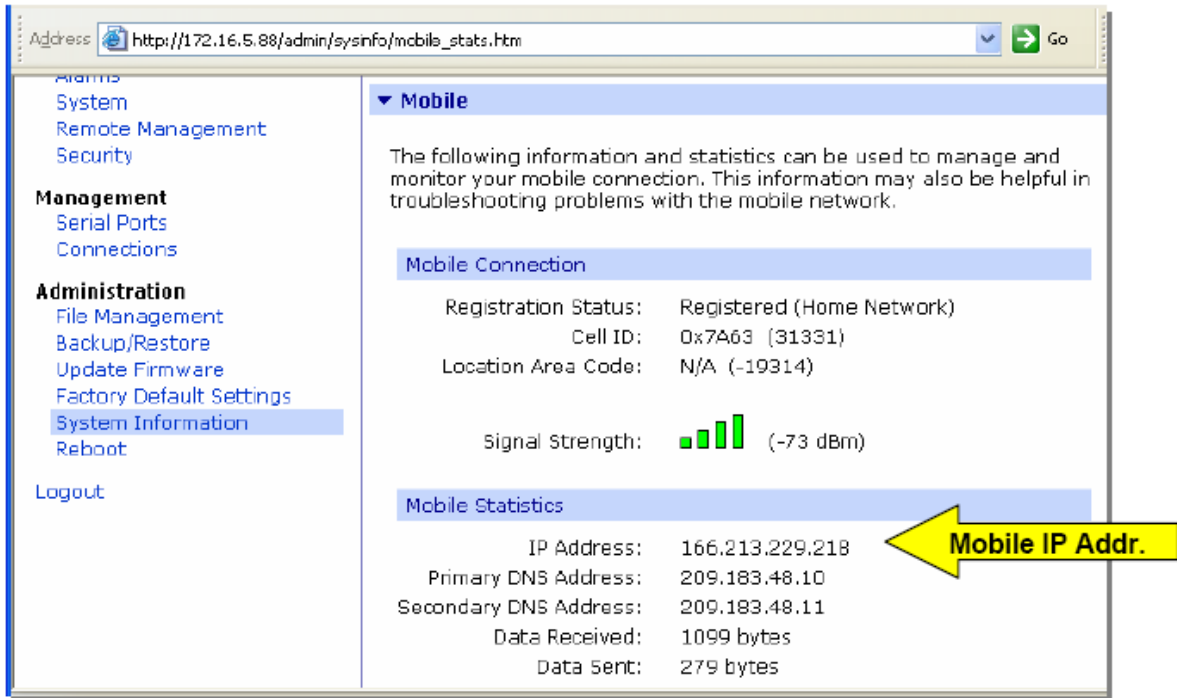
e. Following is a SunCom example of a Custom APN:

The screenshot displays the 'Mobile Configuration' web interface. On the left is a navigation menu with sections: Home, Configuration (Network, Mobile, Serial Ports, Alarms, System, Remote Management, Security), Management (Serial Ports, Connections, Network Services), and Administration (File Management, Backup/Restore, Update Firmware, Factory Default Settings, System Information, Reboot, Logout). The main content area is titled 'Mobile Configuration' and contains 'Mobile Settings'. It includes instructions to select service provider and plan, and notes that settings are provided by the service provider. Under 'Mobile Service Provider Settings', 'Service Provider' is set to 'SunCom' and 'Service Plan' is set to 'Proxy APN'. A dropdown menu for 'Service Plan' is open, showing options: Proxy APN, Public APN, Internet APN, and Custom APN. Under 'Mobile Connection Settings', there is a checked checkbox for 'Re-establish connection when no data is received for a period of time' and an 'Inactivity timeout' of 3600 seconds. An unchecked checkbox for 'Enable bridged (pass-through) mode' is also present.


5. If you changed the APN type, reboot the Digi Connect WAN via Administration > Reboot if changes were made to the mobile provider or IP address settings.

Configuring and Testing the Digi Connect WAN

6. Once the mobile link LED is on solid (which may take a few minutes), verify the mobile IP address from the Digi Connect WAN home page, via Management > Connections, or via Administration > System Info > Mobile (as shown below):



The screenshot shows a web browser window with the address `http://172.16.5.88/admin/sysinfo/mobile_stats.htm`. The page displays the following information:

- Mobile Connection**
 - Registration Status: Registered (Home Network)
 - Cell ID: 0x7A63 (31331)
 - Location Area Code: N/A (-19314)
 - Signal Strength:  (-73 dBm)
- Mobile Statistics**
 - IP Address: 166.213.229.218
 - Primary DNS Address: 209.183.48.10
 - Secondary DNS Address: 209.183.48.11
 - Data Received: 1099 bytes
 - Data Sent: 279 bytes

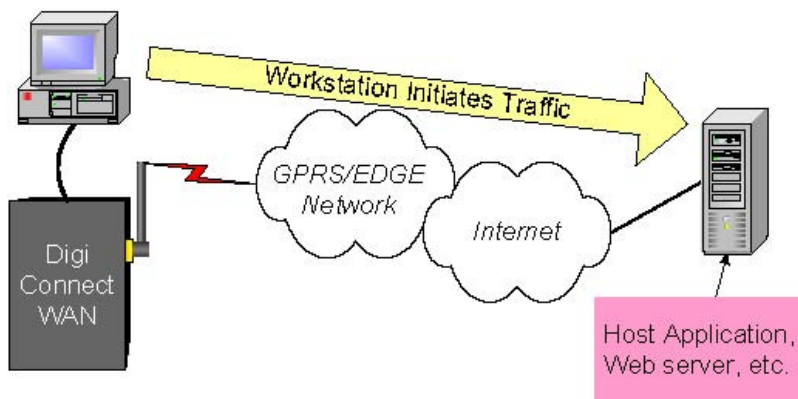
A yellow arrow points to the IP Address field in the Mobile Statistics section, labeled "Mobile IP Addr."

7. The Digi Connect WAN should now be ready to use.

Testing the Digi Connect from a Workstation

Once the Digi Connect WAN is connected to the cellular network and is accessible from network devices connected to its Ethernet port, you can do some simple tests to verify communications through the device.

A simple test is to connect *out* through the Digi Connect WAN to an Internet website like www.digi.com. Make sure your workstation's IP config is to use the Digi Connect WAN's Ethernet port IP as the default gateway and use the wireless provider's DNS server IP addresses (found via Administration > System Info > Mobile).



Configuring and Testing the Digi Connect WAN

In-bound Connections require additional configuration to test. First, not all APN types allow incoming connections. Second, the Digi Connect WAN uses Network Address Translation (NAT)* to route traffic from the Public IP address on the cellular interface to the Ethernet port's private IP network. NAT provides two main benefits:

Security: NAT hides the private IP addresses of the devices on the Digi Connect WAN's Ethernet network.

IP Address Availability: IP addresses are in short supply and cost money. The Digi Connect WAN need be provided only one IP address from the wireless carrier.

Port forwarding* entries are required to pass incoming traffic through the Digi Connect WAN to a device or workstation connected to the Digi Connect WAN's Ethernet port.

** Note that the Digi Connect Remote Gateway (RG) does not support NAT or port forwarding.*

Refer to the Digi Connect WAN application guide on mobile terminated connections for details on setting up in-bound connections.

A simple test to verify the Digi Connect WAN is on the wireless network and is accessible is to ping the mobile IP address from an Internet connected workstation. From the example above where the mobile IP address is 166.213.229.218: ping 166.213.229.218

If the request times out, try adding a "-w 5000" or "-w 10000" to the ping command: ping -w 5000 166.213.229.218

Other application scenario examples, such as using the Digi Connect WAN for a backup wireless WAN connection, are available from Digi International.

Finishing Up and Getting Assistance

Please register your Digi Connect WAN at <http://www.digi.com/support/customer%20services/warranty.jsp> .

If you have any questions or need assistance, please contact your Digi Connect WAN vendor or Digi International at 952-912-3444, or Digi technical support at <http://www.digi.com/support/eservice/eservicelogin.jsp> .