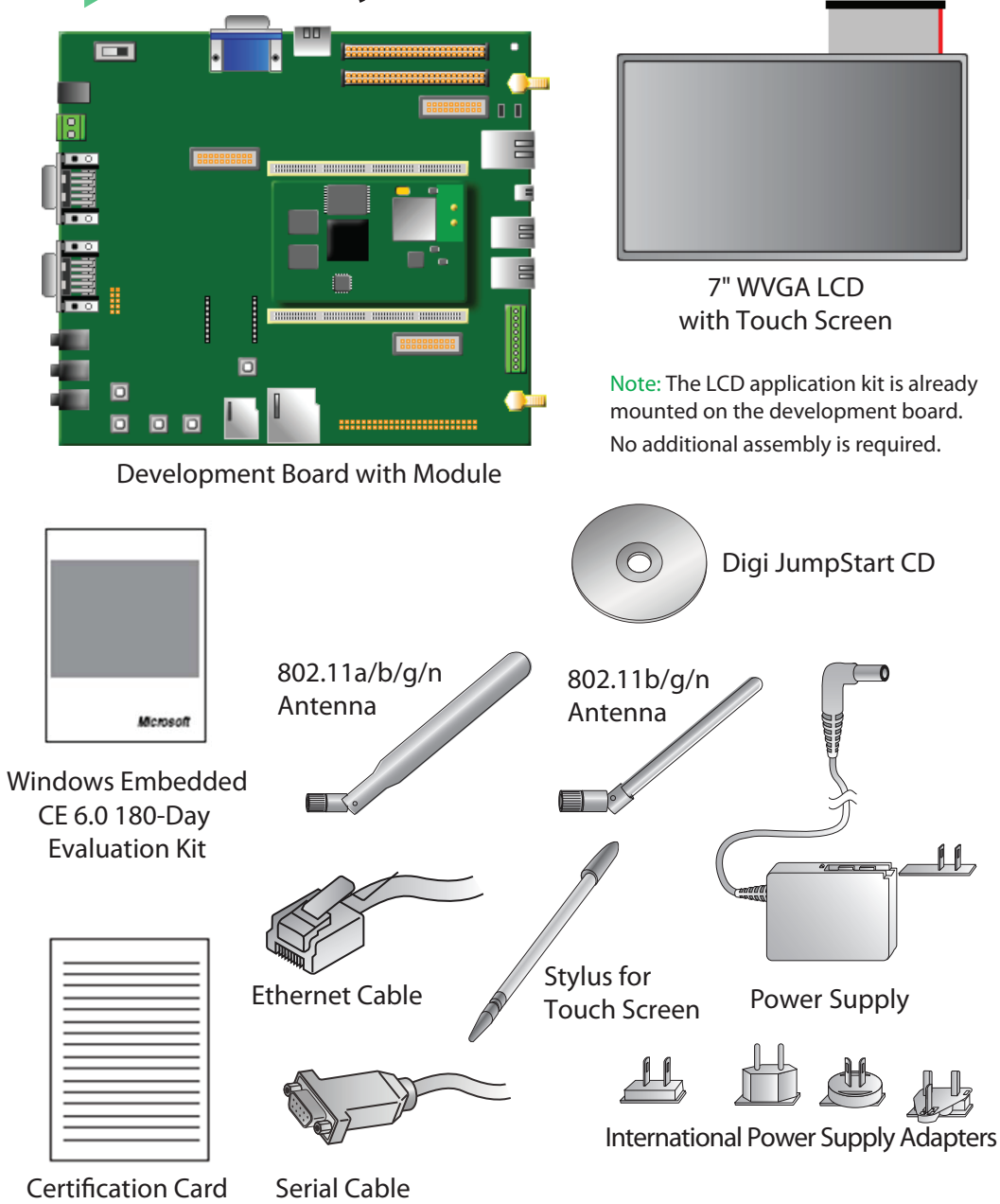


# 1 Verify Kit Contents

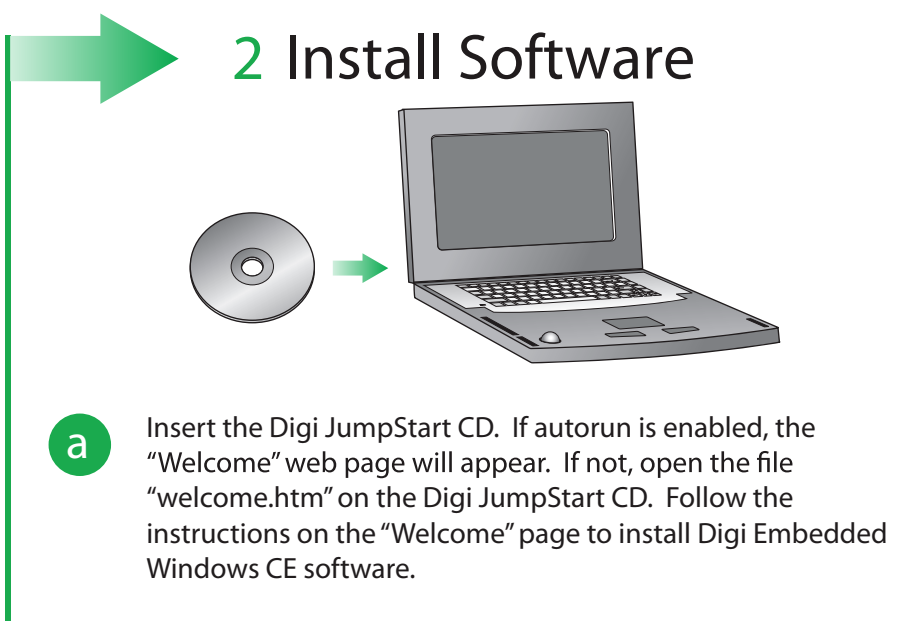


## Quick Start Guide

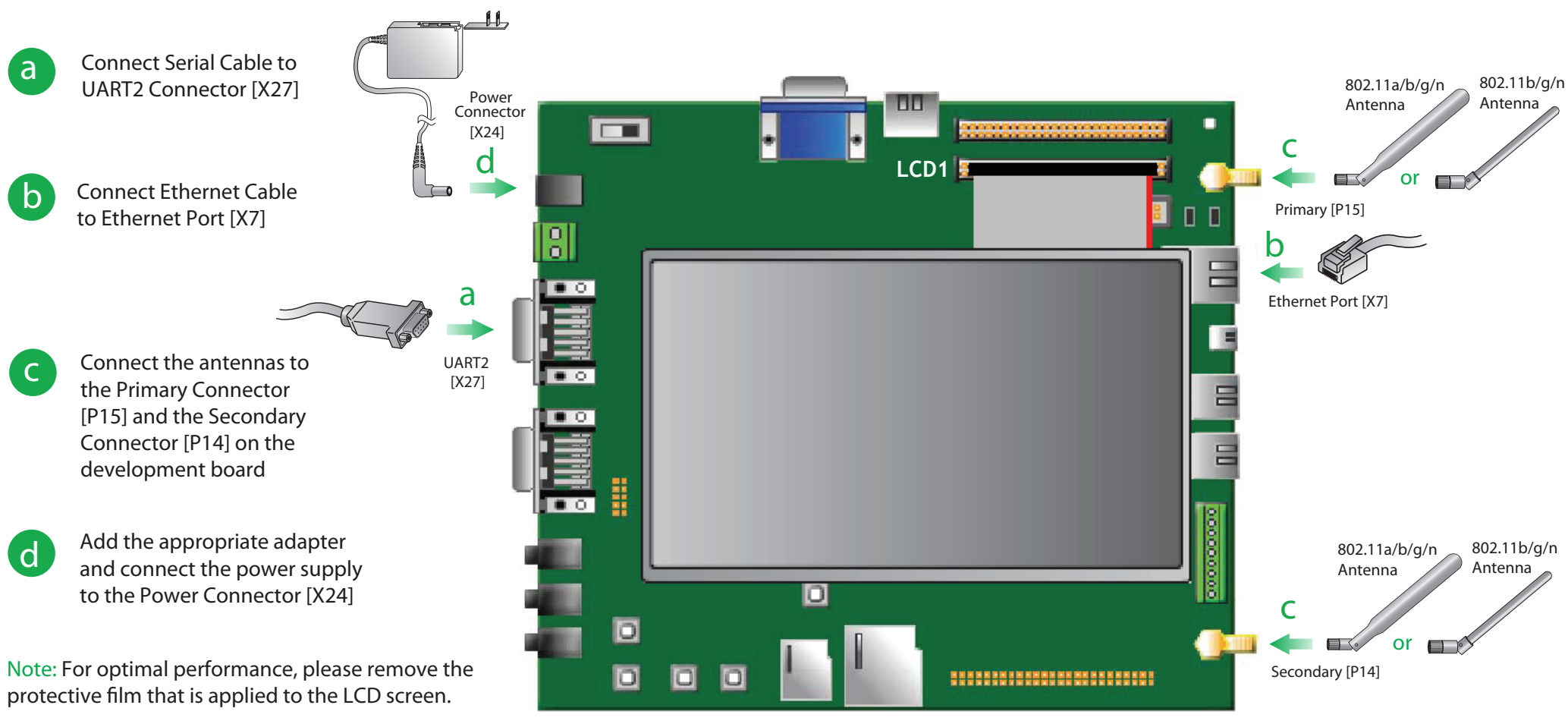
Early Availability Kit  
Windows Embedded CE 6.0  
ConnectCore™ Wi-i.MX51

90001139\_B

# 2 Install Software



# 3 Connect Hardware to Development Board



# 4 What's Next?

- a Software instructions are on the Welcome page of the CD-ROM. When the software installation is complete, follow the instructions in *Building Your First Application*. This guide introduces you to quickly creating and running an application in the target platform. *Building Your First Application* is accessible from the Start menu group **Digi>Microsoft Windows Embedded CE 6.0>Documentation**.
- b After going through *Building Your First Application*, you are encouraged to read the 'Digi JumpStart For Windows Embedded CE 6.0 User's Guide', accessible from the Visual Studio help menu. From within Visual Studio go to **Help > Contents**, then under the 'Filtered by:' dropdown select (unfiltered). These documents explain in detail all the elements of the development process such as kernel configuration, debugging, file transfer, firmware update, etc.