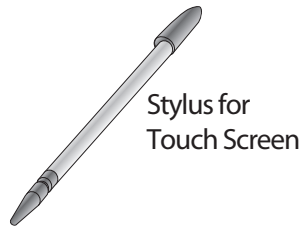


1 Verify Kit Contents

7" LCD Display with Touch Screen
(assembled on its circuitry board)



This Quick Start Guide



Stylus for Touch Screen



Quick Start Guide

7" WVGA LCD Application Kit

ConnectCore™ Wi-i.MX51
ConnectCore™ Wi-i.MX53
ConnectCard for i.MX28

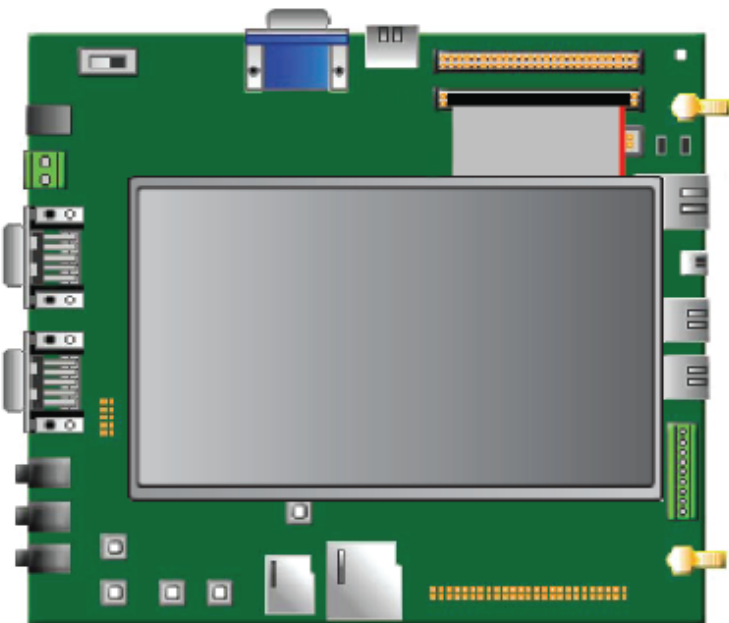


90001127-88 F

2 Hardware Connection

2.1 ConnectCore for i.MX51 Development Kit

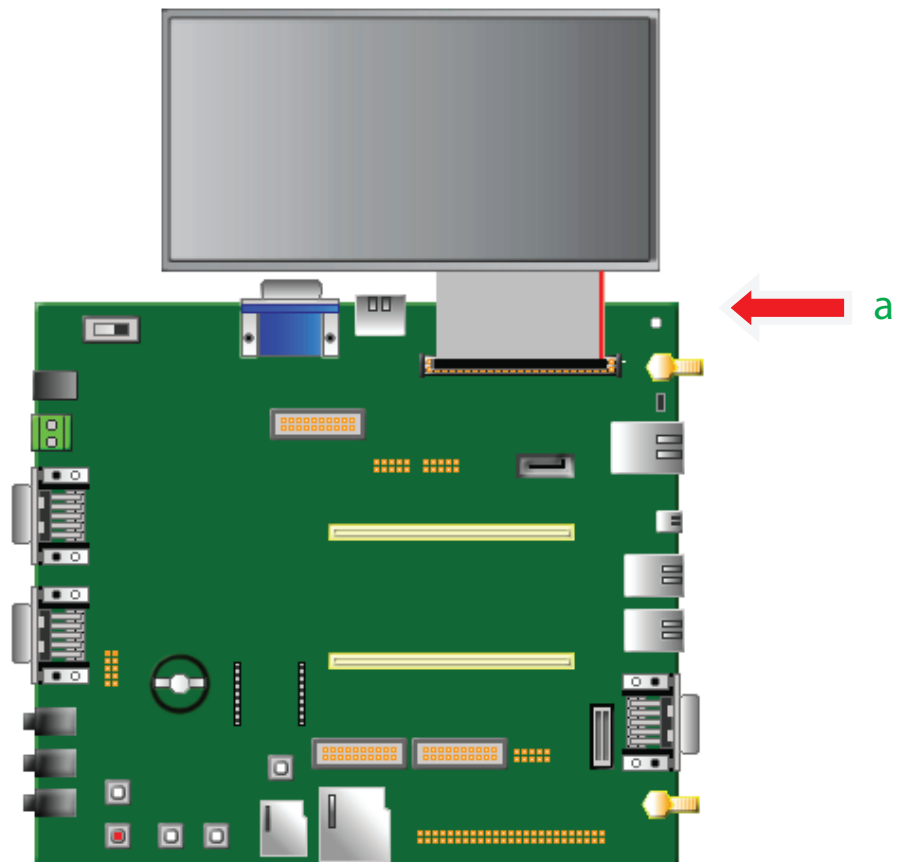
- a Connect the 80-pin flat cable to connector LCD1 on the development board.



Note: If necessary, please refer to the Hardware Reference Manual for additional information about switch/jumper settings on your development board.

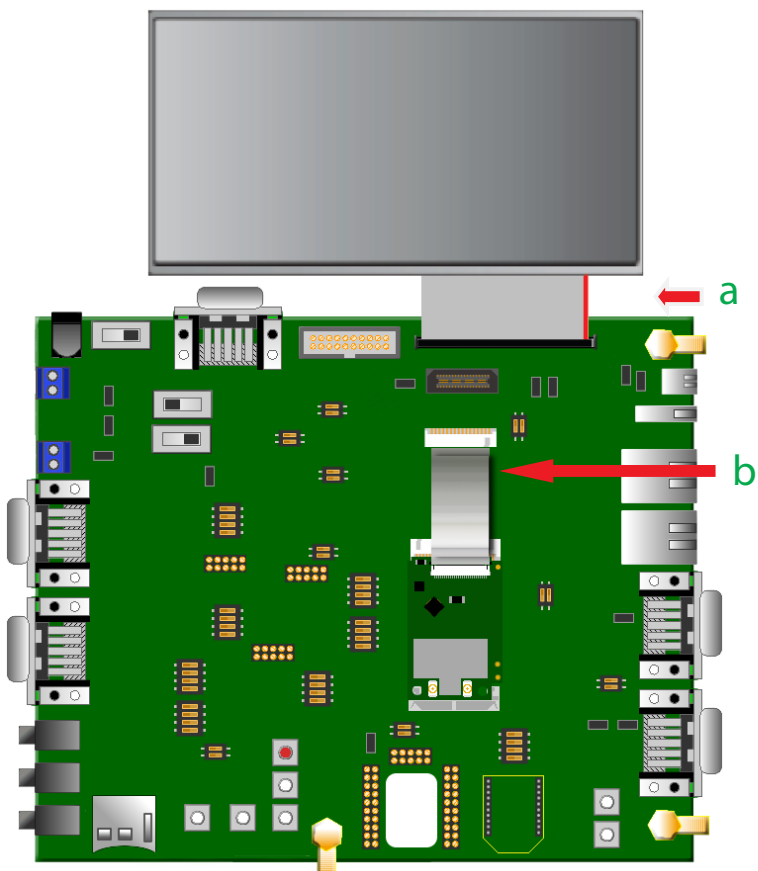
2.2 ConnectCore for i.MX53 Development Kit

- a Connect the 80-pin flat cable to connector PARALLEL LCD (P1) on the development board.



2.3 ConnectCard for i.MX28 Development Kit

- a Connect the 80-pin flat cable to connector LCD (P4) on the development board.
- b Connect the 40-pin FFC cable to connector J12 on the development board



3 Download Documentation

- a To obtain a materials list and installation instructions specific to your platform, go to <http://www.digi.com/support/>.
- b From the "Select a Product" drop-down box, select "Application Kits".

4 What's Next?

- a Refer to the provided documentation for hardware and/or operating system specific information.