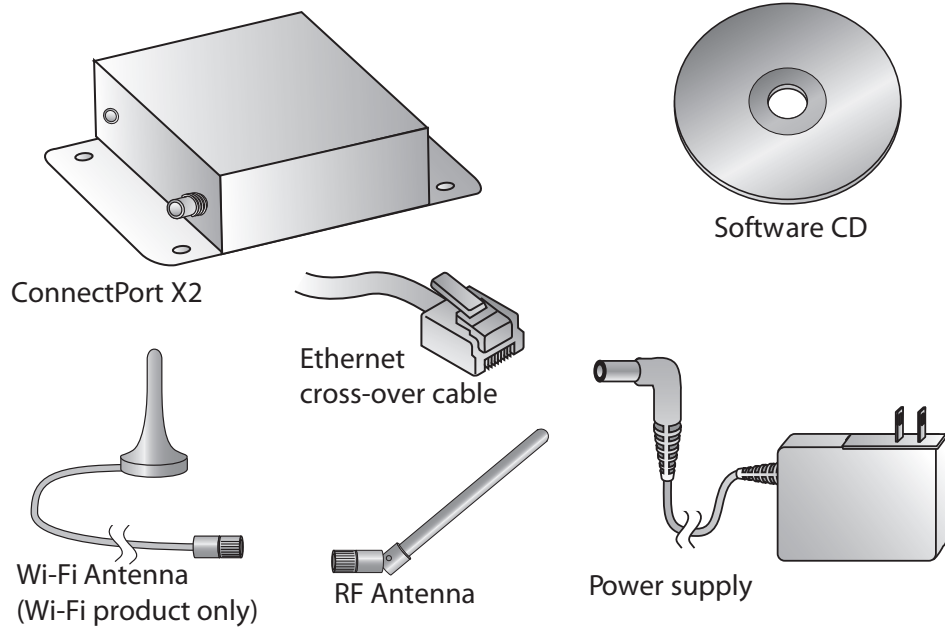


1 Verify kit contents



Quick Start Guide

ConnectPort™ X2 XTend™/XStream™ Wi-Fi or Ethernet

For technical support, please contact Digi.

Phone: 1-800-903-8430

Chat: www.digi.com/support

Email: rf-experts@digi.com

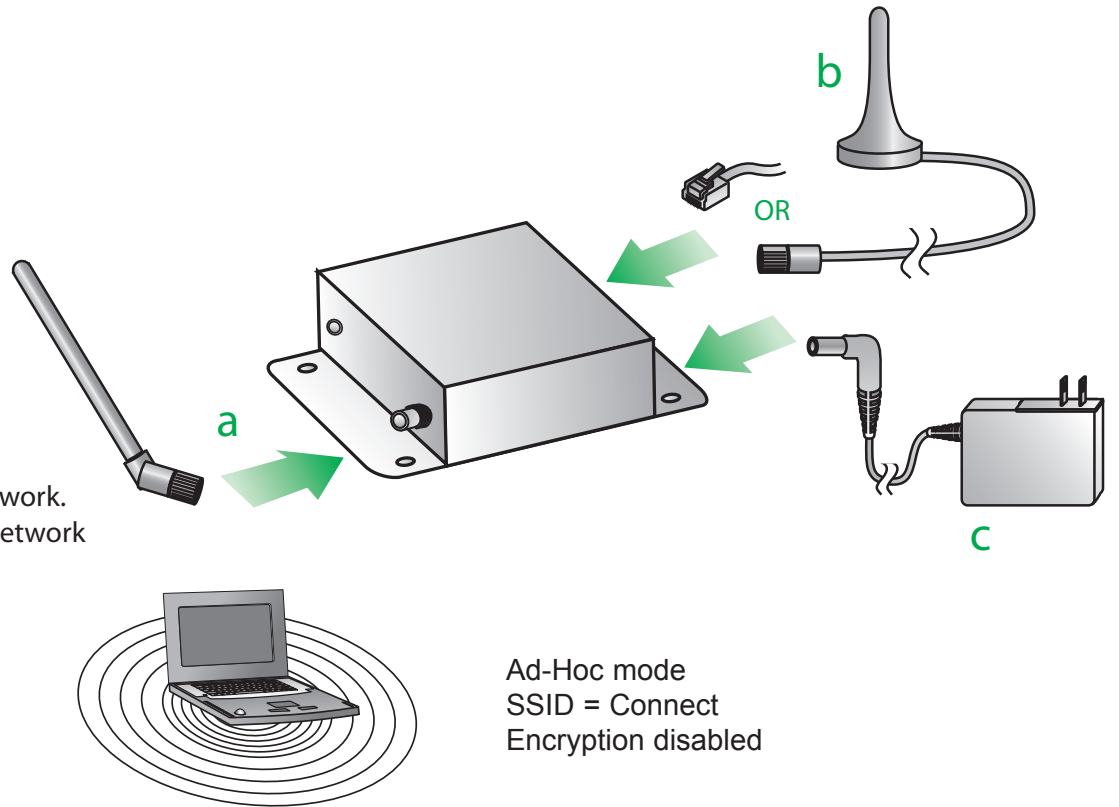


(1P):90000992-88 B

2 Connect hardware

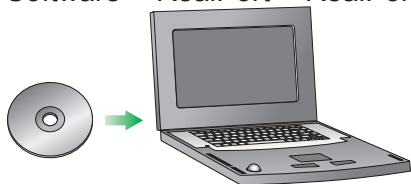
- Connect RF antenna
- Connect Ethernet cross-over cable to LAN connection OR Wi-Fi antenna for wireless access. This device defaults to AutoIP with DHCP client enabled
- Connect Power supply

The ConnectPort X2 is now ready to operate on your PC/network. Steps 3, 4, and 5 are optional to view and edit the device's Network settings and RF settings



3 Install RealPort Software

- Insert CD and click on the Gateway, Host PC & Enterprise Documentation/Software > RealPort > RealPort Setup



NOTE: You must disable firewall and antivirus software before running installation.

- Click *Add a New Device* or *Next*
- Select the correct MAC address for the ConnectPort X2 from the list
- Assign device to a COM port from the drop-down menu
- Click *Finish* then Reboot PC

4 Install X-CTU software

- Click on the Gateway, Host PC & Enterprise Documentation/Software > X-CTU > Install X-CTU
- After installation, open X-CTU using the Start menu (Programs > Digi > X-CTU) or the new icon on your desktop
- On the bottom of the *PC Settings* tab, select the *Network Interface* tab and then click *Digi Device Discovery*
- Select the MAC address that corresponds with the ConnectPort X2
- Log into the WebUI using the default Username (root) and Password (dbps). The WebUI is used to view/edit the Network interface properties of the ConnectPort X2. See ConnectPort X2 user's guide for details
- Exit the WebUI by closing the browser window

5 Configure XTend/XStream RF Module

- Inside the ConnectPort X2 is an embedded XTend or XStream RF module. To change the RF module parameters, open X-CTU to the Modem Configuration tab
- Use the Read button to read firmware version and parameter values, then use Write button to save new firmware version and parameter values to non-volatile memory. The Restore button is used to set parameter values back to factory defaults
- For full description of RF module parameters, see the respective RF module's product manual

NOTE: X-CTU software can also be used to run a Range Test with a remote loopback radio (see Range Test tab), or send/receive data over the air via the serial COM port (see Terminal tab)

