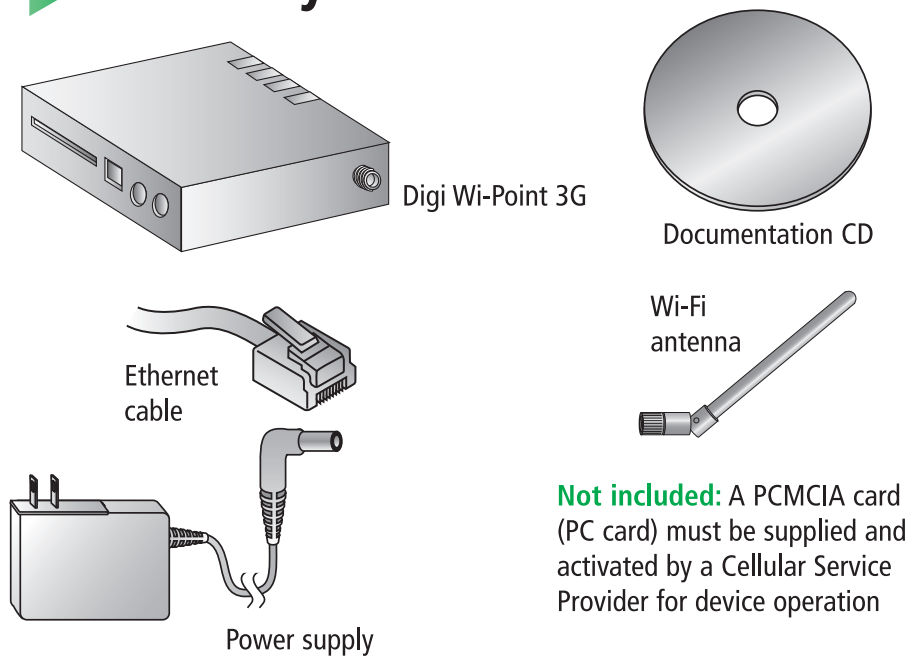


1 Verify kit contents



Quick Start Guide

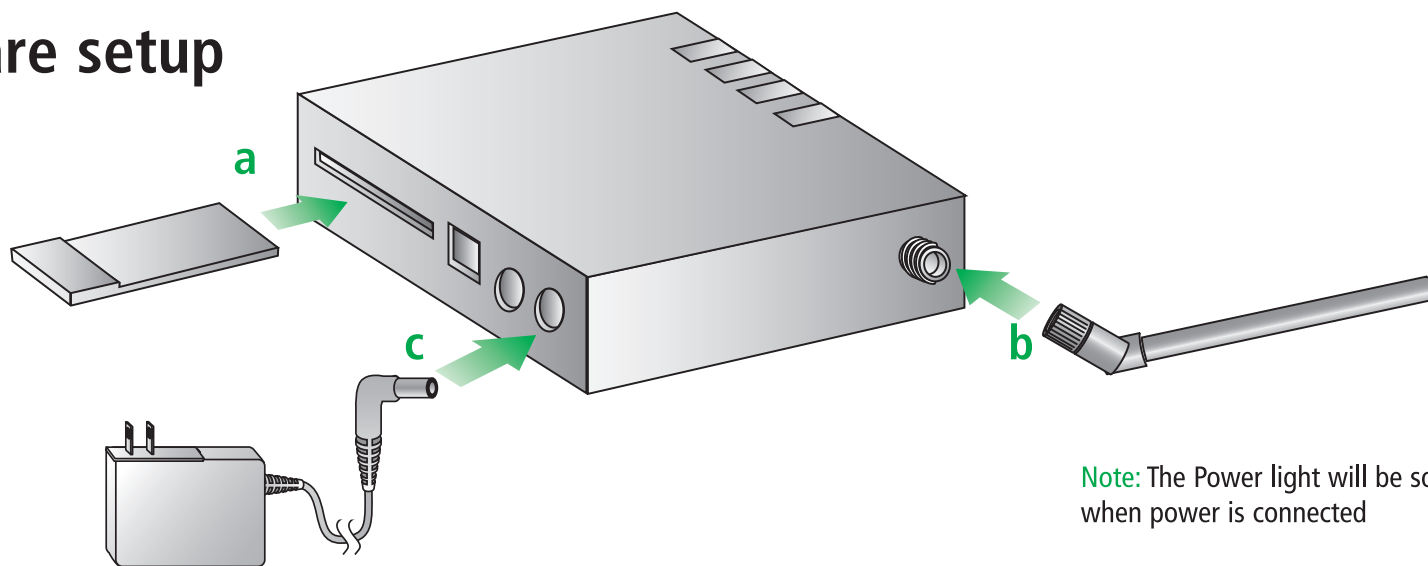
Digi Wi-Point 3G™



PN: (1P) 90000907-88 A

2 Hardware setup

- a** Insert PC card into the PC card slot
- b** Connect Wi-Fi antenna
- c** Connect power supply

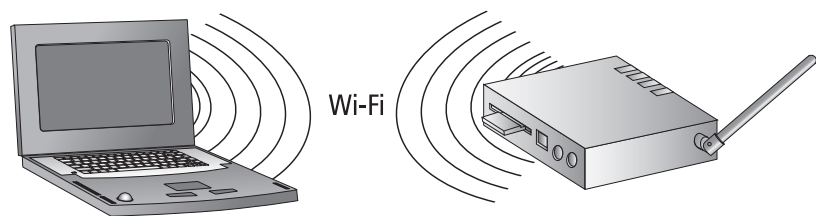


Note: The Power light will be solid green when power is connected

3 Connect network

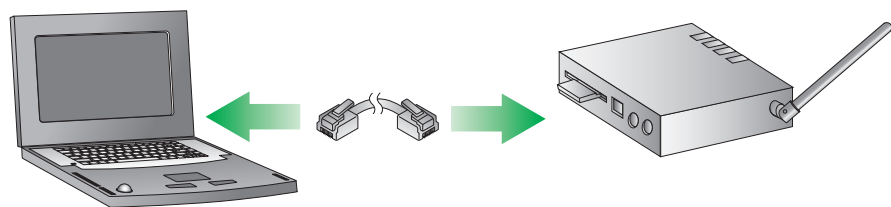
Via Wi-Fi

Turn on Wi-Fi enabled PC
Scan Wi-Fi networks
Connect to DIGIWIPOINT3G
Access point
SSID = DIGIWIPOINT3G
Encryption disabled



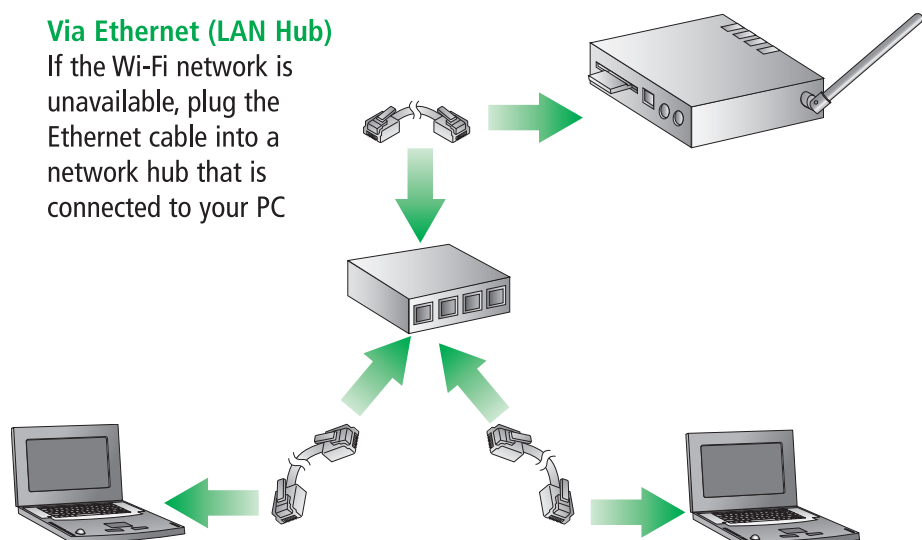
Via Ethernet (LAN Direct)

If the Wi-Fi network is unavailable, plug the Ethernet cable into the Digi device and your PC



Via Ethernet (LAN Hub)

If the Wi-Fi network is unavailable, plug the Ethernet cable into a network hub that is connected to your PC



4 Configure device

- a** Open your browser and enter "http://192.168.1.1" in the address bar
- b** When the login page appears, enter user name "root" and password "dbps"
- c** Click OK. You can access the default settings from the web interface to make changes if needed
- d** Please refer to Digi Wi-Point 3G User Guide for advanced configuration instructions

5 Configure Wi-Fi security

- a** Digi strongly recommends that you configure the Wi-Fi and firewall settings under the navigation link "Security" through the web interface

Congratulations!
Your Digi device is configured to your cellular carrier for Internet connectivity