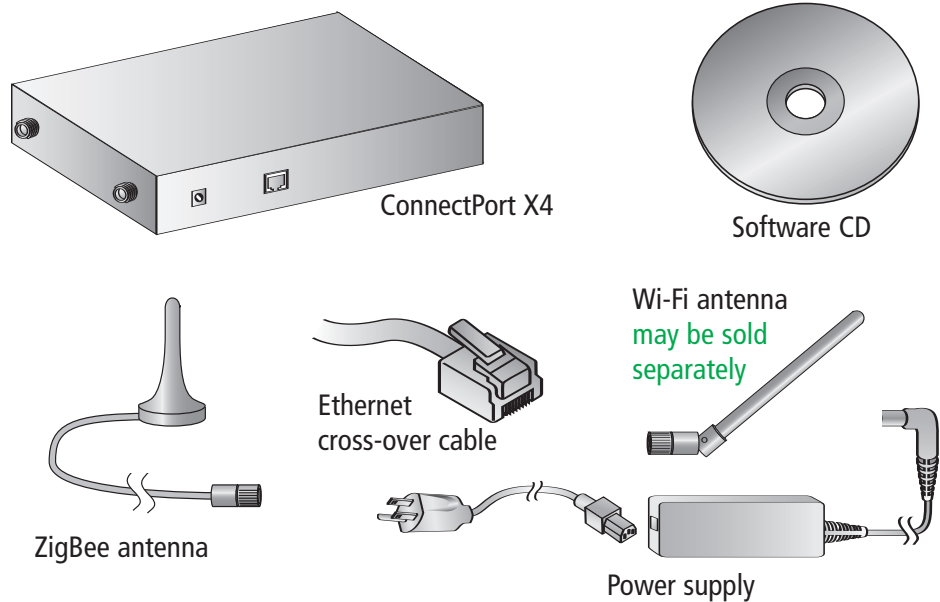


1 Verify kit contents



Quick Start Guide

ConnectPort™ X4

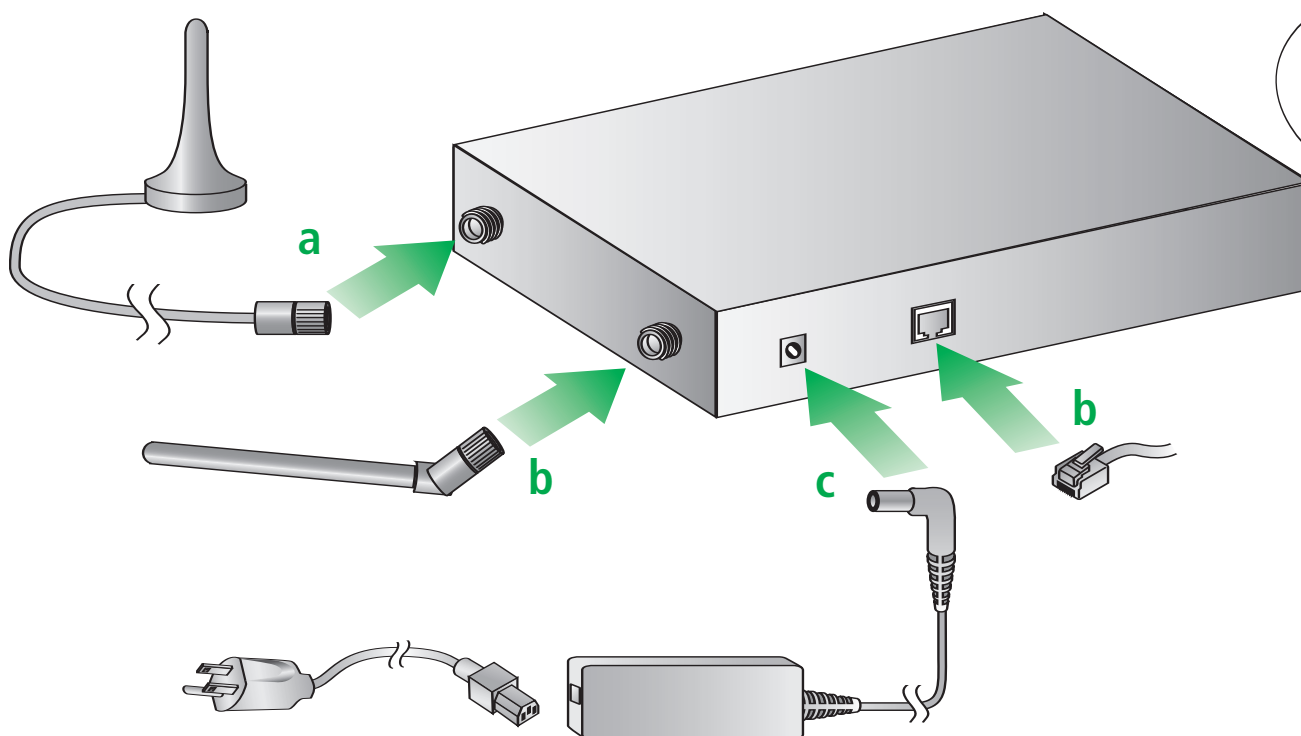
Wi-Fi or Ethernet



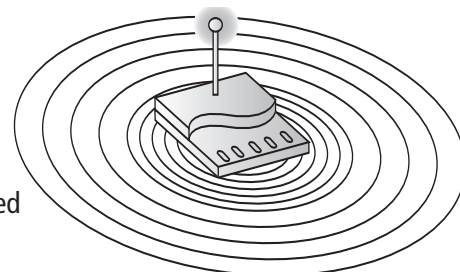
PN (1P):90000896-88_A

2 Connect hardware

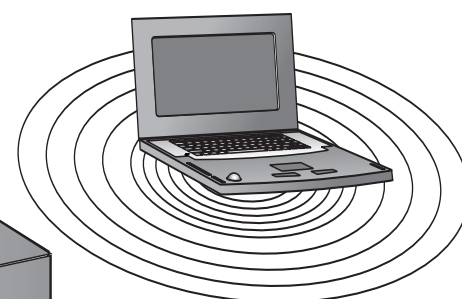
- Connect ZigBee antenna
- Connect Ethernet cross-over cable to LAN connection OR Wi-Fi antenna for wireless access
- Connect power supply



Access point
SSID = Connect
Encryption disabled



OR

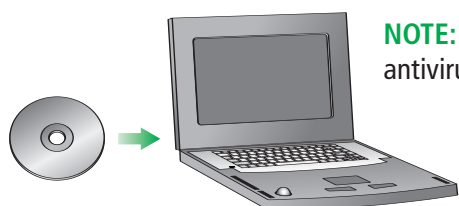


Ad-Hoc mode
SSID = Connect
Encryption disabled

3 Configure your device

Ethernet only versions:

- Insert CD.
Click on the Gateway Software > ConnectPort X > Configuration > Device Discovery.



NOTE: You must disable firewall and antivirus software before running wizard!

- Click the device from the discovery list to access the web interface

WiFi versions:

- Open the browser using the IP address in the URL address bar
- Under Configuration > Network, click on WiFi Security Settings to setup your WiFi connection, click "Apply"

4 Discover ZigBee

- Under Administration, Click System Information > Mesh Network
- Click Discover Mesh Network. You should see the devices in the network

For additional information on configuring your device for your application, refer to the User's Guide and other documentation on your CD