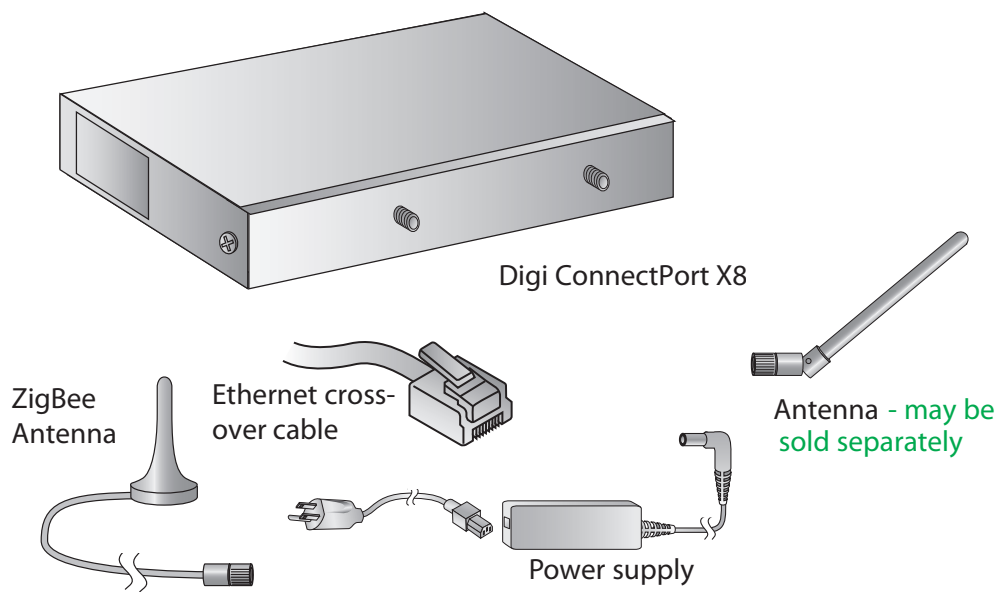


## 1 Verify kit contents



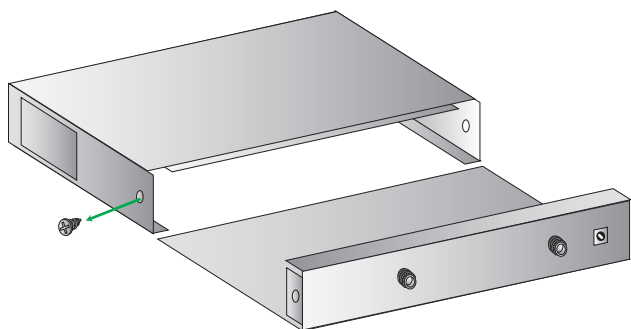
## Quick Start Guide

### ConnectPort™ X8

90000882\_B

## 2 Install PC card or module

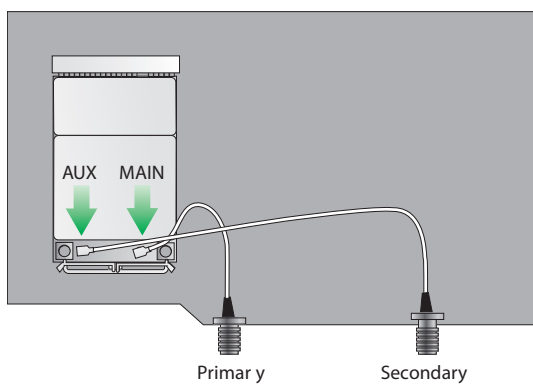
### a Remove cover



### b

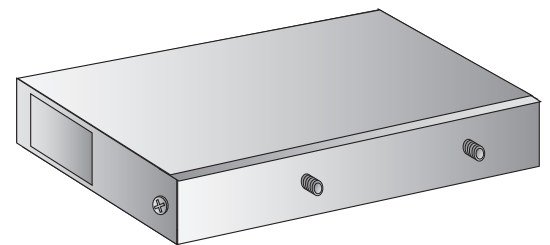
#### Add module:

1. Snap module into place
2. Attach antenna cables (MAIN to Primary external antenna and AUX to Secondary external antenna)



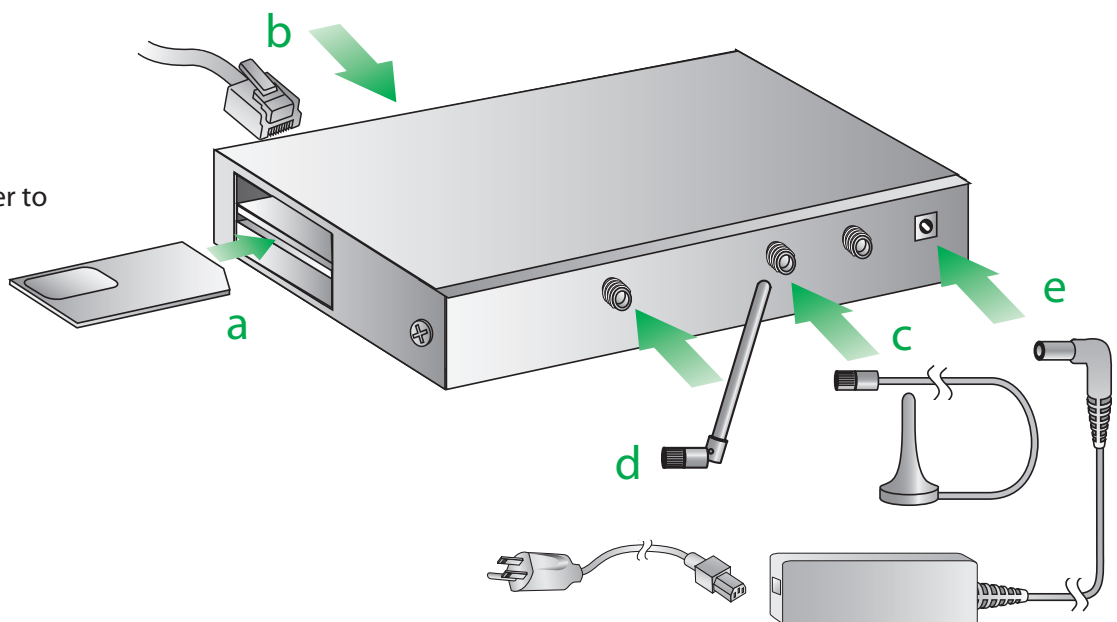
### c

#### Replace cover



## 3 Connect hardware

- Install SIM card (use with GSM module only)  
Orient SIM card with metal side up and short corner to insert first
- Connect Ethernet cable to laptop computer
- Connect ZigBee antenna
- Connect Cellular antenna
- Connect power supply



## 4 Configure your cellular settings

- Open your web browser and enter the IP address 192.168.1.1 in the URL address bar
- From the web interface, under Configuration, click Mobile. Enter your service provider name and connection parameters and click "Apply."  
For CDMA carriers that support Over-the-Air provisioning, select "Click Here" to automatically provision the device, then click "Apply."

Your device is now configured. If you would like to verify your connections go to step 5 and 6

**NOTE:** If you have difficulty discovering your device, make sure your host computer is set up to obtain IP addresses automatically (DHCP server is enabled by default on the device). Also ensure all firewall software is temporarily disabled

## 5 Discover ZigBee

- Under Administration, click System Information > Mesh Network
- Click Discover Mesh Network. You should see the devices in the network

## 6 Validate Internet connection

- Disconnect the Ethernet cross-over cable and reconnect it. This will re-establish the Ethernet connection by assigning a new IP address through the DHCP server
- To verify your Internet connection, enter a web site of your choice (e.g. [www.digi.com](http://www.digi.com)) in the URL address bar of your browser and click "enter." Connecting to a website indicates the connection is working

For additional information about your cellular connection, click System Information > Mobile or reference the User's Guide provided on the Digi support site ([www.digi.com/support/](http://www.digi.com/support/))