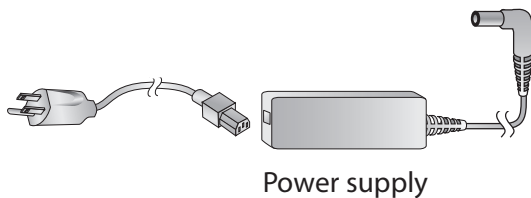
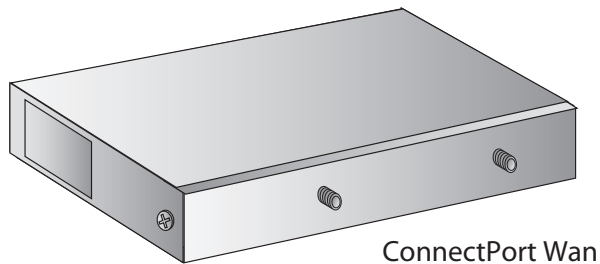


1 Verify kit contents



Quick Start Guide

ConnectPort™ WAN EVDO

9000804_D

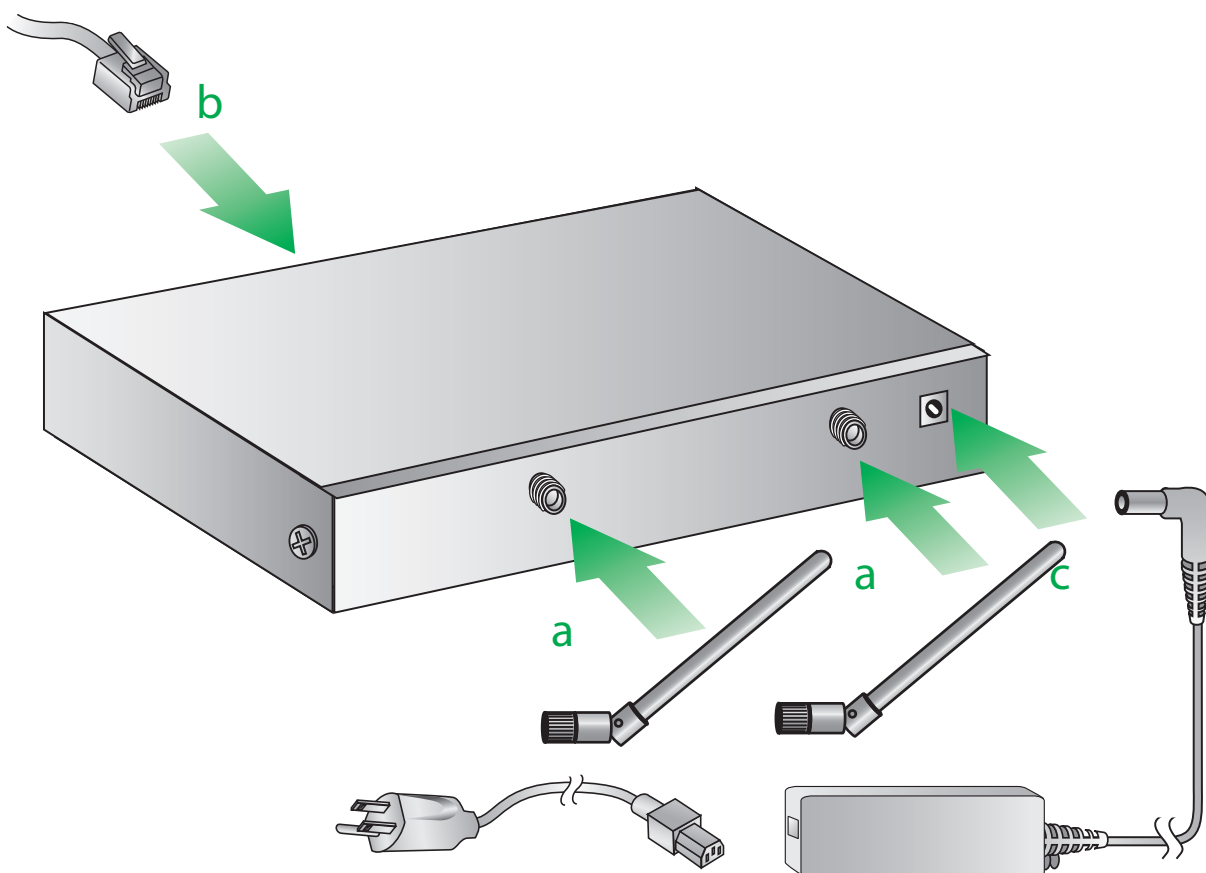
2 Connect hardware

- a** Connect antenna to primary and secondary connectors

NOTE: Do not over-tighten antenna. Over-tightening may damage internal connections. Loosen antenna before adjusting antenna angles.

- b** Connect straight-through Ethernet Cable to a PC

- c** Connect power supply



3 Configure your cellular settings

- a** Open your web browser and enter the IP address 192.168.1.1 in the URL address bar

- b** From the web interface, under Configuration, click "Mobile." Enter your service provider name and connection parameters and click "Apply." For CDMA carriers that support Over-the-Air provisioning, select "Click Here" to automatically provision the device, then click "Apply."

Your device is now configured. If you would like to verify your connections go to step 4

NOTE: If you have difficulty discovering your device, make sure your host computer is set up to obtain IP addresses automatically (DHCP server is enabled by default on the device). Also ensure all firewall software is temporarily disabled

4 Verify

- a** Your device has been properly provisioned and is active if the PPP session shows (connected)
- b** Remove the Ethernet cable and plug it back into the PC to update the DNS
- c** Open a web browser and enter a web site of your choice in the URL address bar of your browser and hit "enter" (e.g. www.digi.com)
- d** For additional information about your cellular connection, go to Administration > System Information > Mobile and reference the User's Guide provided on the Digi support site (www.digi.com/support/)