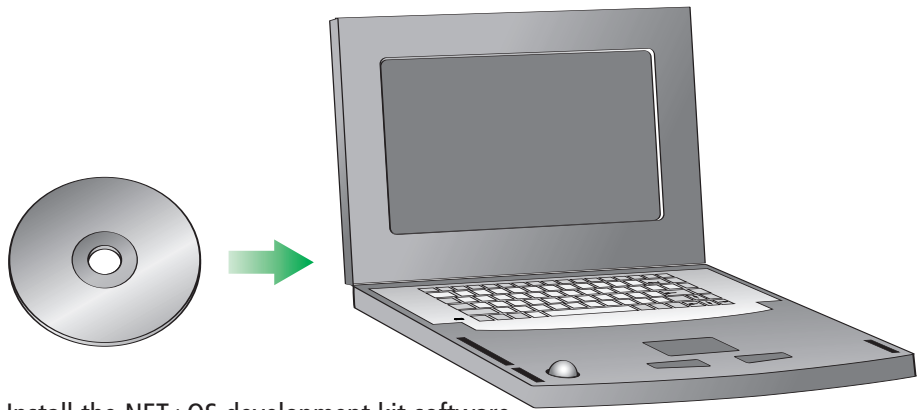


1 Install Software



Install the NET+OS development kit software.
NOTE: If you are installing NET+OS for use with a third party IDE follow the "Getting Started" instructions that are included in the third party Add-on Kit.

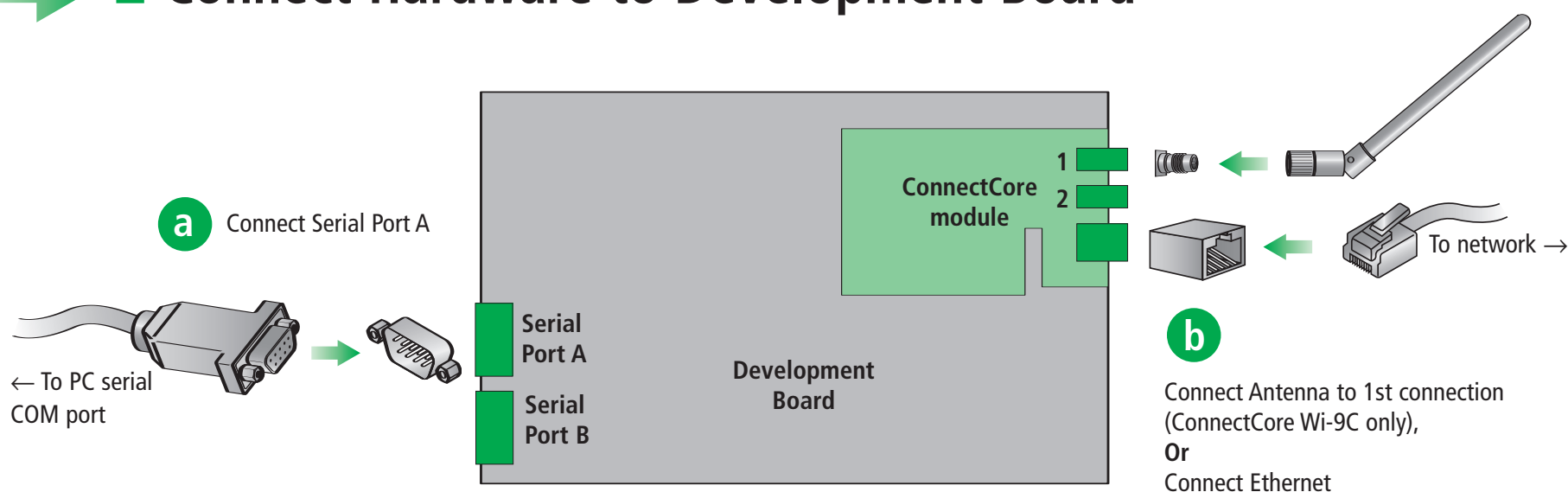


NET+OS™ Jump Start Kit Quick Start Guide

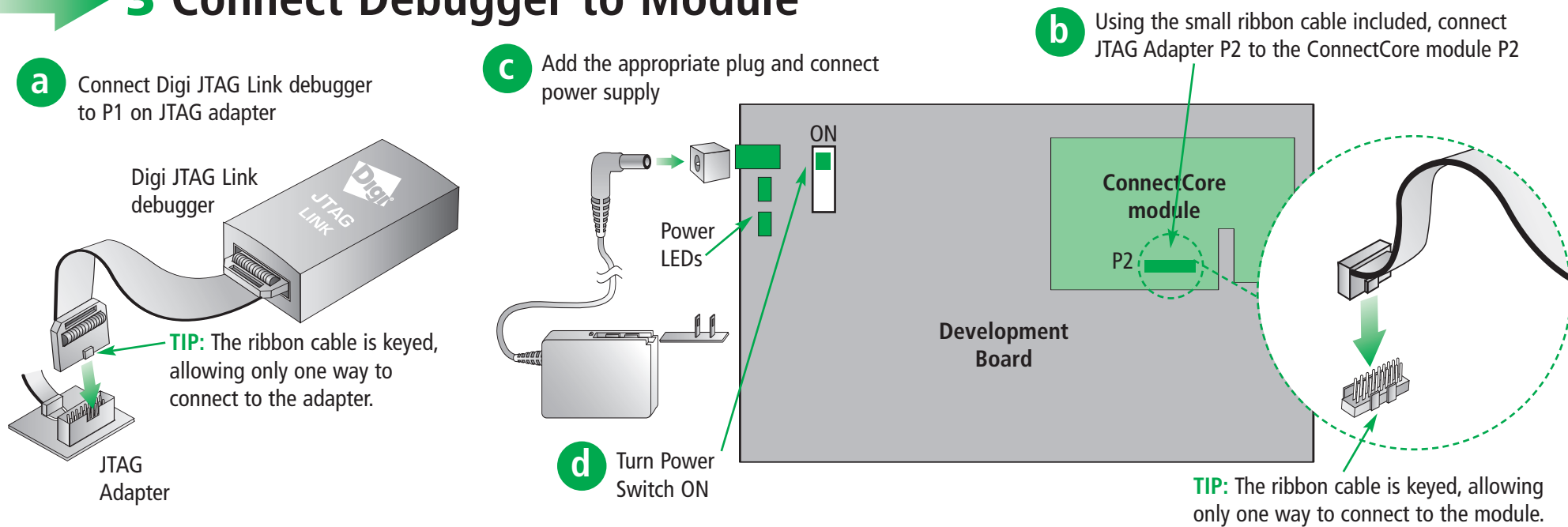
ConnectCore™ Wi-9C
ConnectCore™ 9C



2 Connect Hardware to Development Board



3 Connect Debugger to Module



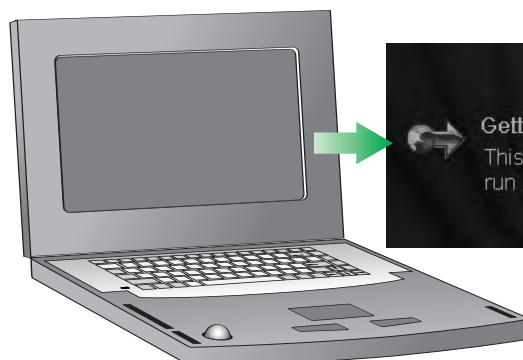
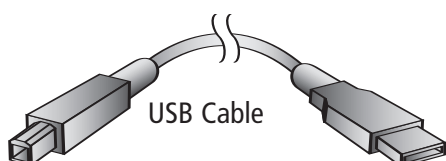
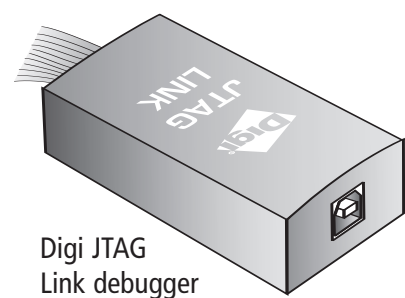
4 Connect Debugger to PC USB Port

IMPORTANT: You must install the software before connecting the debugger!

a Connect USB cable to Digi JTAG Link debugger

b Connect USB Cable to PC USB port

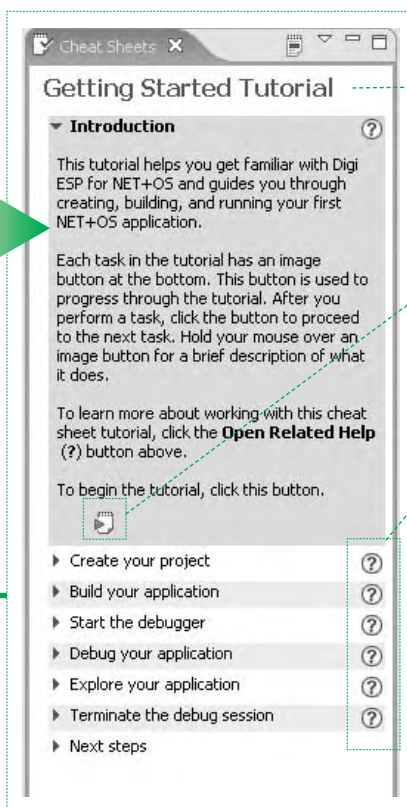
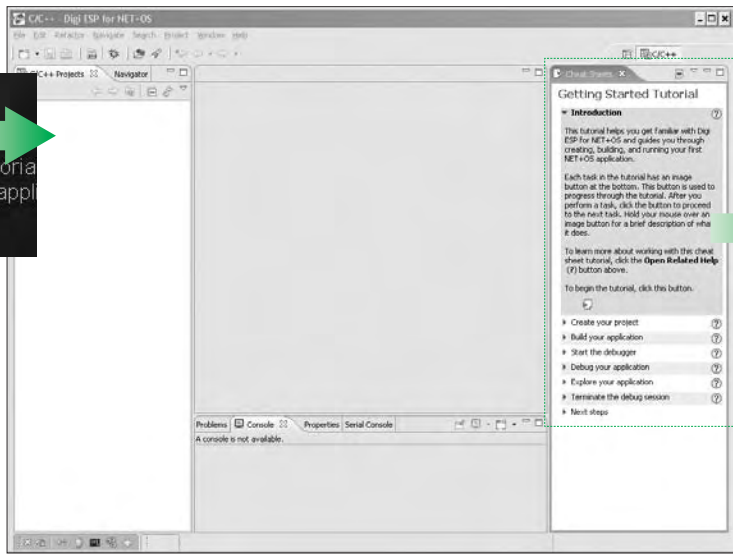
c Click the "Getting Started" link on the Welcome screen in Digi ESP™, which will walk you through the process of creating, building and debugging your first NET+OS application



d See back page for step 5

5 Get started with your 1st application

Getting Started
This is an interactive tutorial that runs your first NET+OS application.



Getting Started Tutorial Digi ESP™ guides you through these simple steps helping you to build your first application in minutes.

Next Step button
Click here when you have completed a step to move onto the next step in the tutorial.

Help button
Click here to open detailed help relating to this step in the tutorial.

Features of Digi ESP™

Digi ESP™ maintains multiple layouts of views, menus, and toolbars to help you complete different tasks. These layouts are called perspectives. All perspectives are completely customizable and Digi ESP™ remembers the changes you make, so the next time you use the perspective, it stays just the way you like it.

Debug perspective

Debugging views. Digi ESP™ automatically switches to the Debug perspective when you start to debug your application.

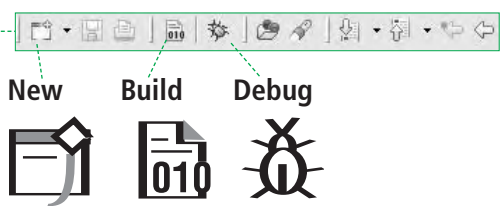
C/C++ perspective

Development views. Create, develop, edit and build using the C/C++ perspective.

Reference: C/C++ Perspective

Workbench toolbar

While all operations can be done from the menus, many commonly used functions can be performed from the main Digi ESP™ toolbar. The contents of this toolbar change based on the active perspective and items may be enabled or disabled based on the state of either the active view or editor.



C/C++ Projects view

Displays your projects and files.

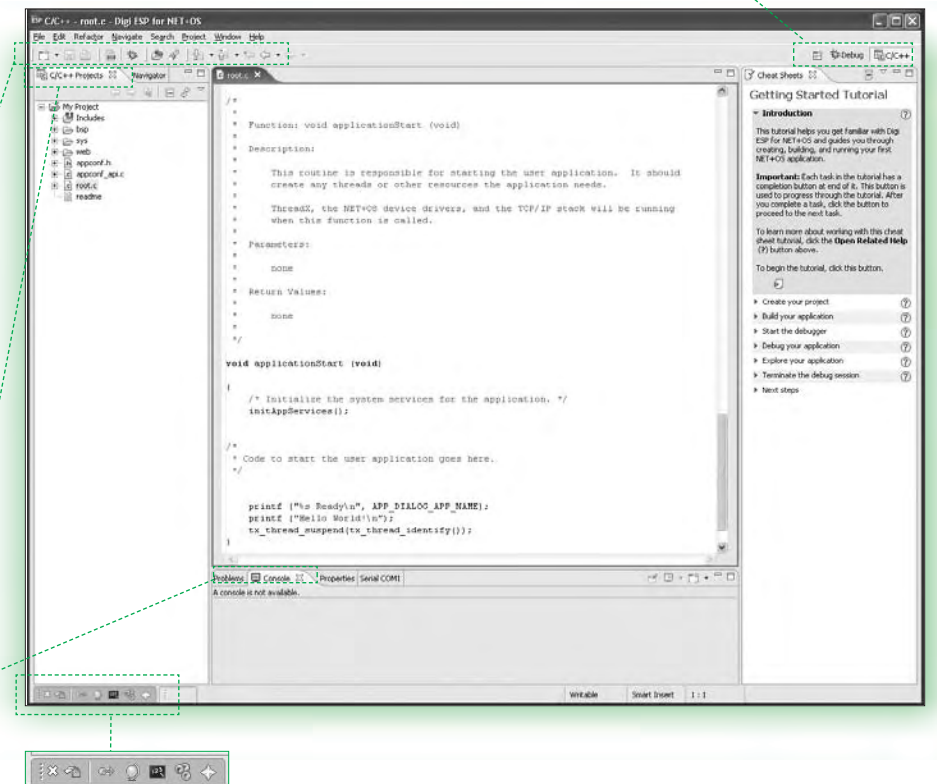
Output and Console Views:

Problems tab

Look here for compile errors. Double-click on the errors to navigate to the location in your source code.

Console tab

This view displays the complete compiler output.



Welcome toolbar

A mini version of the welcome screen. Use this toolbar to navigate just as you would use the welcome screen to find Getting Started tutorials, samples, and other helpful information.

Reference: Debug Perspective

Debug view

Displays threads, thread status, and thread stack frames.

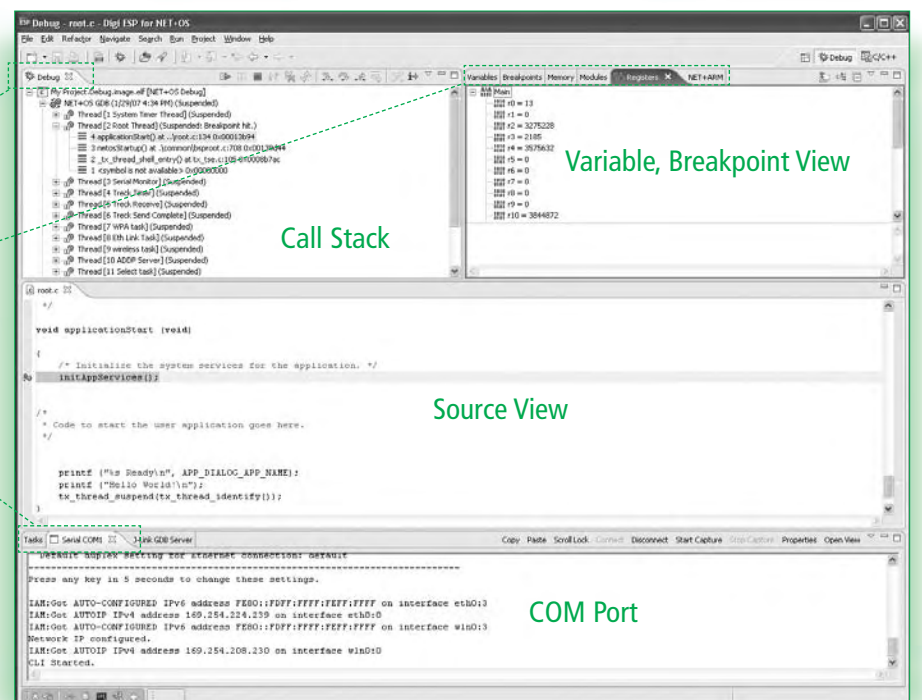
Other debug views

View local and global variables, breakpoints, monitor and change Digi NET+ARM chip registers or inspect regions of memory.

TIP: While debugging at a breakpoint: hover over a variable to reveal its value.

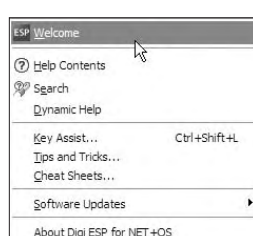
Serial COM tab

This view is the serial data received on your serial console. This is the default console for standard I/O for your application.



Additional Information

Digi ESP™ includes multiple tutorials to help you along. Find more of the information by clicking the **Help > Welcome** menu.



Refer to the items below for additional information and assistance on developing NET+OS applications

- The product support web page: www.digiembedded.com/support
- The product support web forums: www.digiembedded.com/forums