



Making DEVICE NETWORKING easy

Connectware™

Quick Start Guide

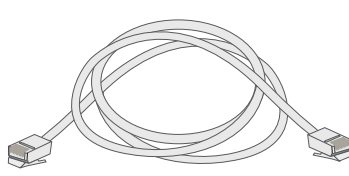
PortServer TS 1/3 + Modem



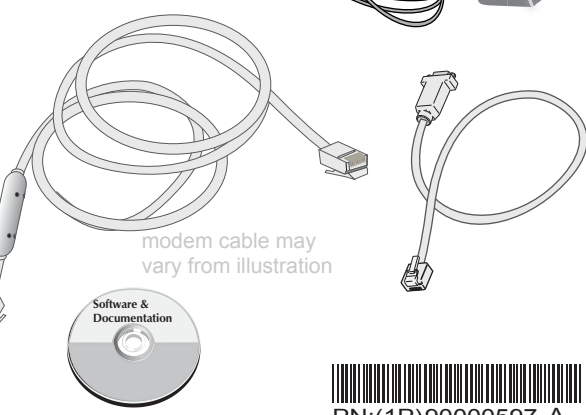
PortServer TS3+Modem shown



power supply may be either supply shown here



Ethernet cable not included



modem cable may vary from illustration



PN:(1P)90000597 A

SET DIP SWITCH

Pin outs

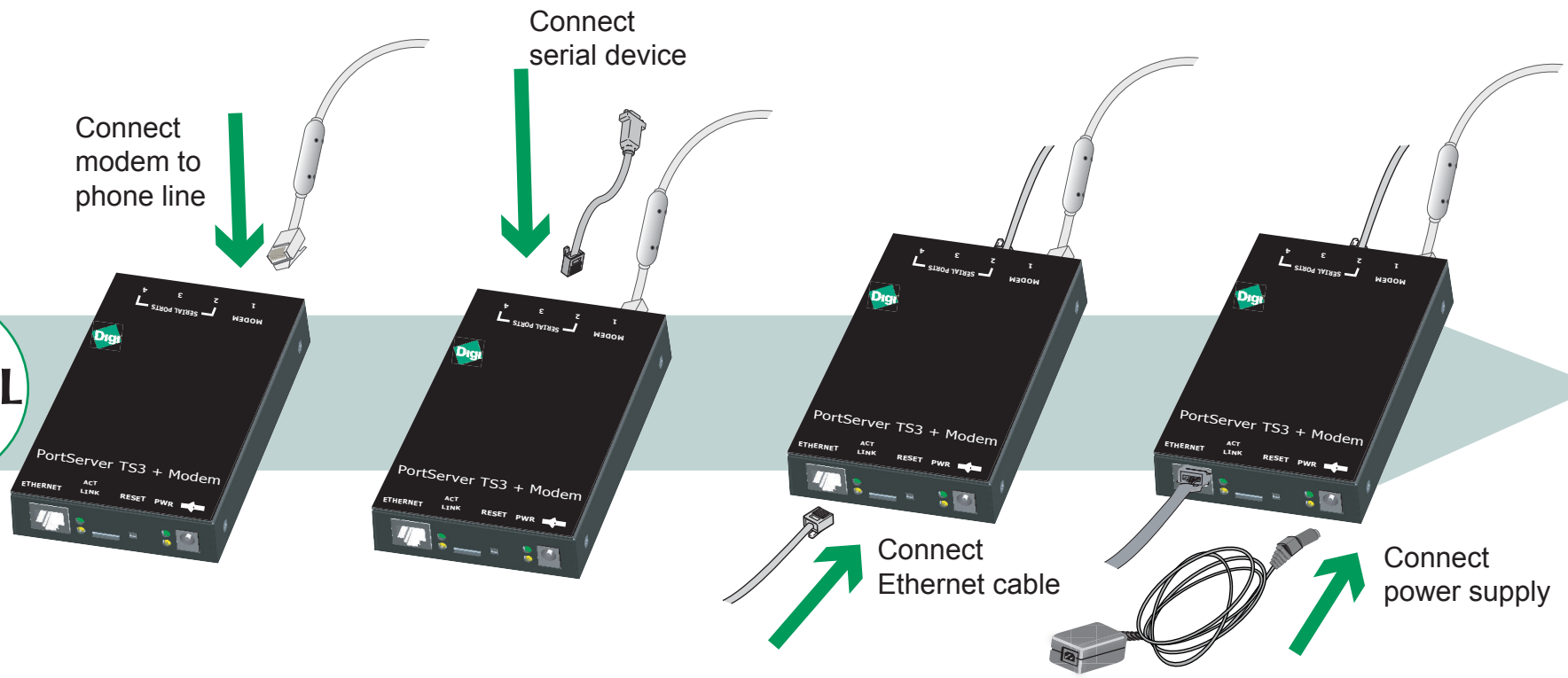
Up/On	EIA-232				EIA-422/485 Full-Duplex				EIA-485 Half-Duplex			
	1	2	3	4	1	2	3	4	1	2	3	4
Down/Off	1	2	3	4	1	2	3	4	1	2	3	4
DB-9 Pin	RI	DSR	RTS	GND	TXD-	RxD-	RTS+	GND	TXD-	RxD-	n/a	GND
1					TXD+	RxD+	SG		TXD+	RxD+		
2					CTS+	CTS-			CTS+	CTS-		
3					DTR	DCD			DTR	DCD		
4												
5												
6												
7												
8												
9												
10												

Set serial DIP switch according to your serial device requirements (EIA-232/422/485).

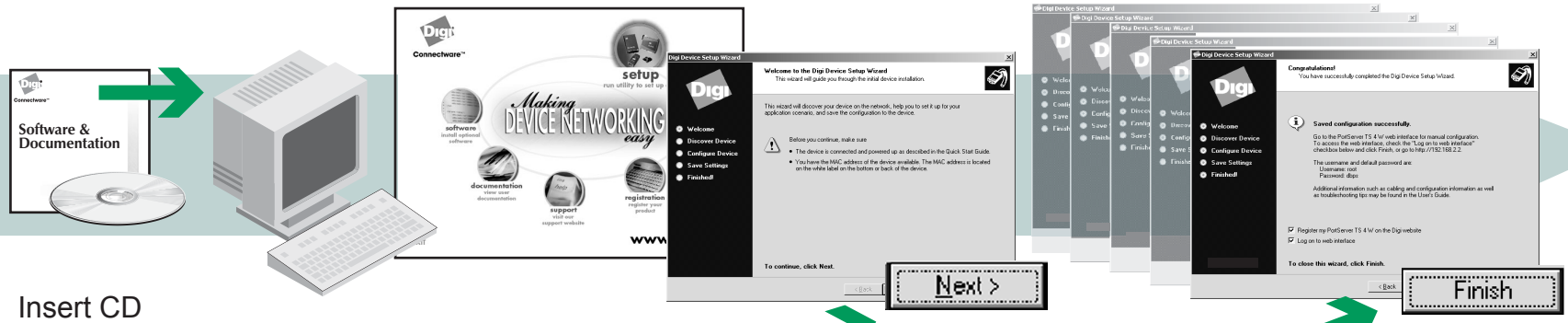


*If switch 4 is up, termination resistor connected
If down, termination resistor unconnected.

INSTALL



RUN WIZARD



Congratulations!
Configuration is complete.
Go to the User Guide on the CD for more information.

visit us at www.digi.com