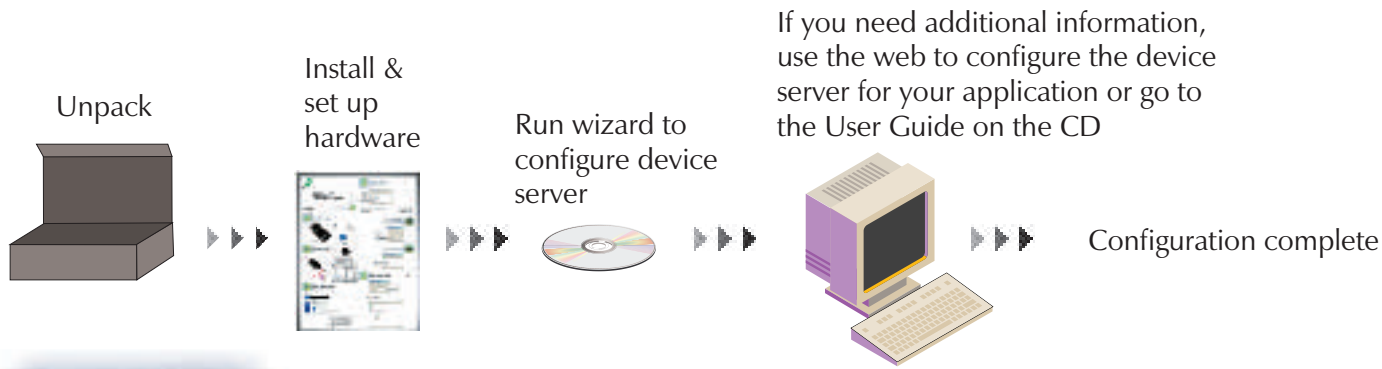




Connectware™

Quick Start Guide Device Server Family

Digi One™ TS, Digi One RealPort™, PortServer® TS 2/4, and PortServer® TS 2/4 MEI



1 What's in the Box

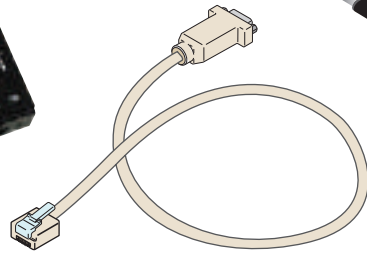
Digi One TS
Digi One RealPort
PortServer TS 2 MEI
PortServer TS 4 MEI
PortServer TS 2
PortServer TS 4 (shown)



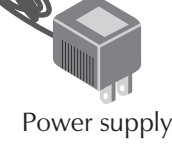
RJ-45 diagnostic loopback



Software and documentation CD



RJ-45 to DB-9F crossover cable



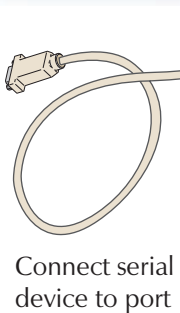
Power supply



2 Install Hardware

If you have a PortServer TS 2/4 MEI or a Digi One TS, set serial DIP switches according to your serial device requirements (EIA-232/422/485).

If switch 4 is up, termination resistor connected. If down, termination resistor unconnected.



Connect serial device to port



Connect to Ethernet

Connect power supply

Up/On	Down/Off	EIA-232	EIA-422/485 Full-Duplex	EIA-485 Half-Duplex
1	1	RI	TXD-	TXD-
2	2	DSR	RxD-	RxD-
3	3	RTS	RTS+	n/a
4	4	GND	GND	GND
5	5	TxD	TxD+	TxD+
6	6	RxD	RxD+	RxD+
7	7	SG	SG	SG
8	8	CTS	CTS+	n/a
9	9	DTR	RTS-	n/a
10	10	DCD	CTS-	n/a

Once you connect the power supply to its source, the unit will power on.



When properly connected and powered up, the device lights will blink indicating the boot. After initialization, the green power light will remain solid. The green link and yellow activity lights blink indicating the Ethernet connection is successful.



3 Insert CD

Insert CD to configure the unit.

If CD does not start automatically, double-click **My Computer** > CD-ROM drive.



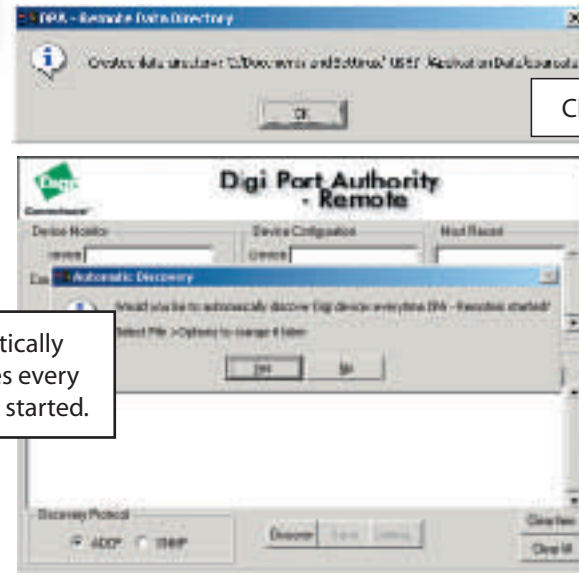
Select your **Operating System**.
Select your **Hardware**.
Select **Digi Port Authority - Remote**.
Click **Install Software**.
Follow the prompts to complete installation.

Alternative Method to Configure

1. Access a PC on the same subnet as the Digi device.
2. Update the ARP table with the Digi device's MAC address and the IP address you want to assign, for example:
`arp -s 192.168.2.2 00-40-9d-00-00-00`
3. Ping the device using the IP address.
Wait a few seconds and then ping the device again.
4. Launch your browser and enter the IP address in the URL window.
5. Go to step 7.



4 Discover Device Server



Click OK.

Click Yes to automatically discover Digi devices every time DPA-Remote is started.



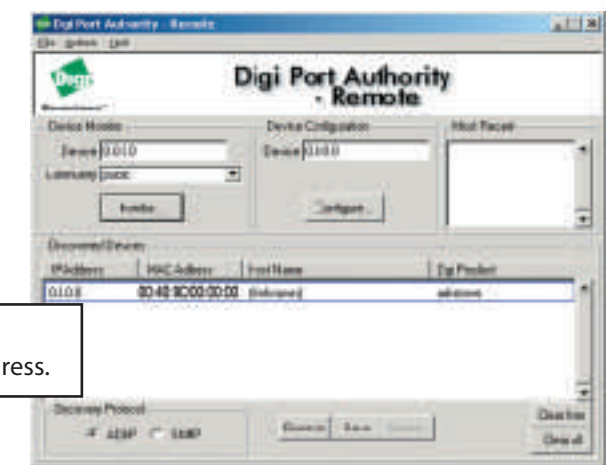
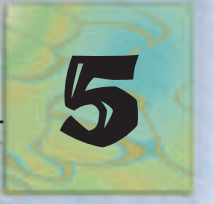
Use the MAC address on your device server and match it in the Discovered Devices table.

If DHCP is not available on your local network the IP address is 0.0.0.0.



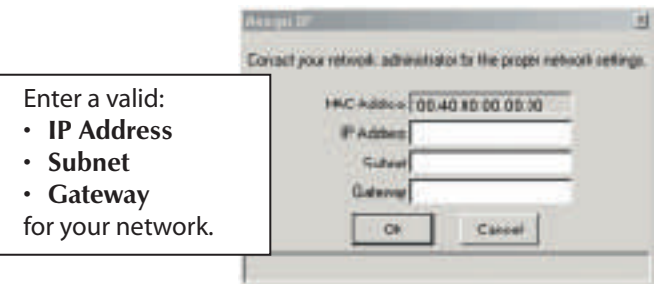
If DHCP is available on your local network, go to step 7.

5 Select Device Server



Double click your device server to assign an IP address.

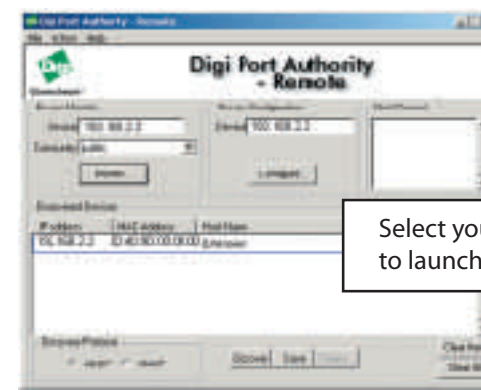
6 Assign IP Address



Enter a valid:
• IP Address
• Subnet
• Gateway
for your network.



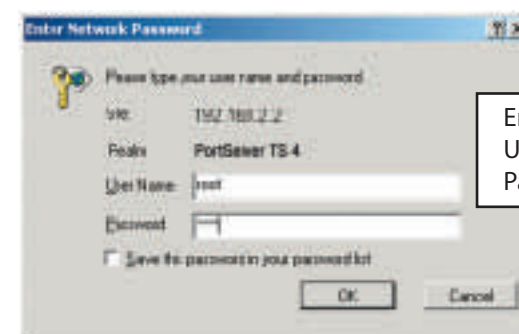
7 Configure Device Server



Select your device and click **Configure** to launch your browser.



8 Log On Device Server



Enter:
User Name `root`
Password `dbps`

Congratulations, your configuration is complete.

Use your browser for additional configuration (enter the IP address in the URL address bar and log on) or see the User Guide under Documentation on the CD.