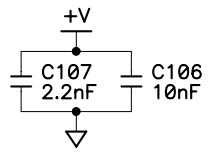
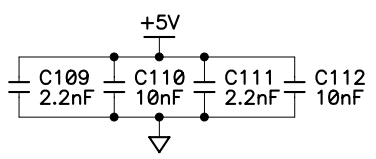
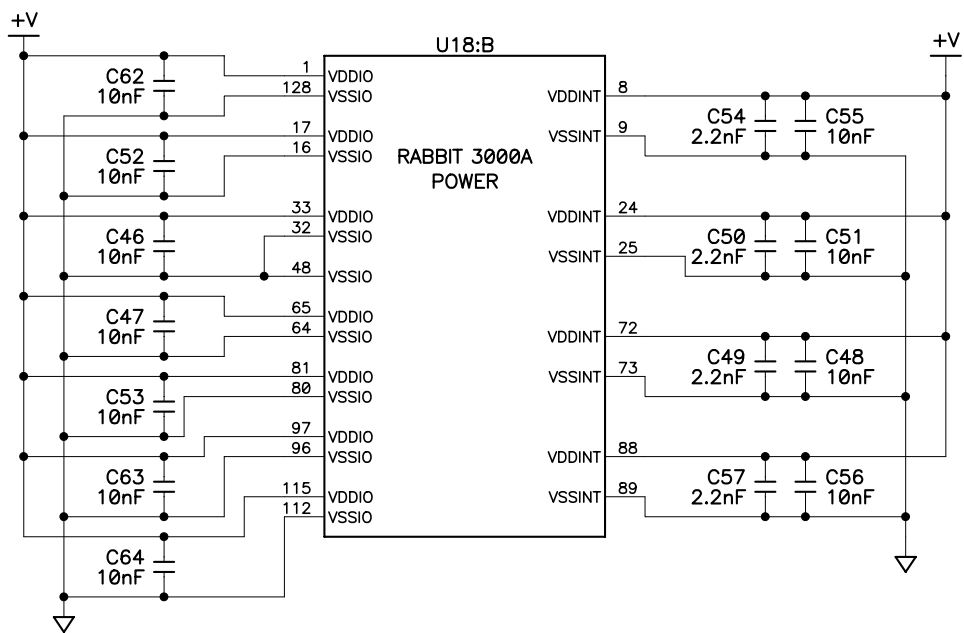
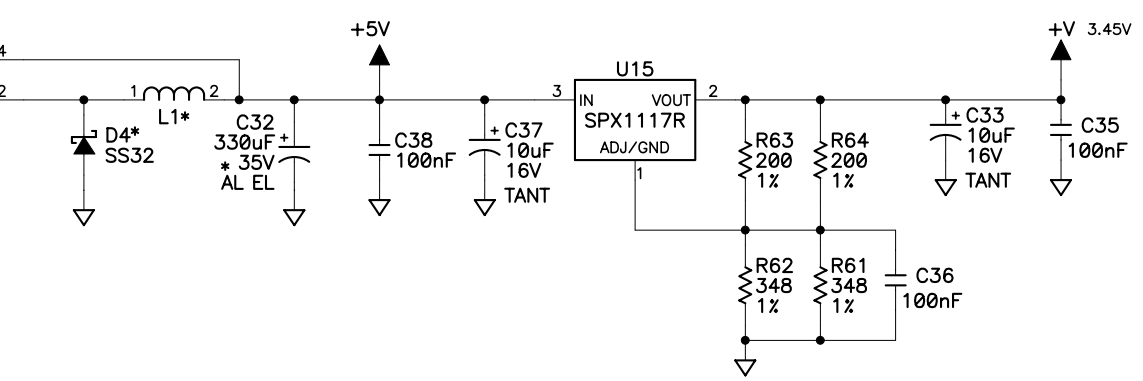


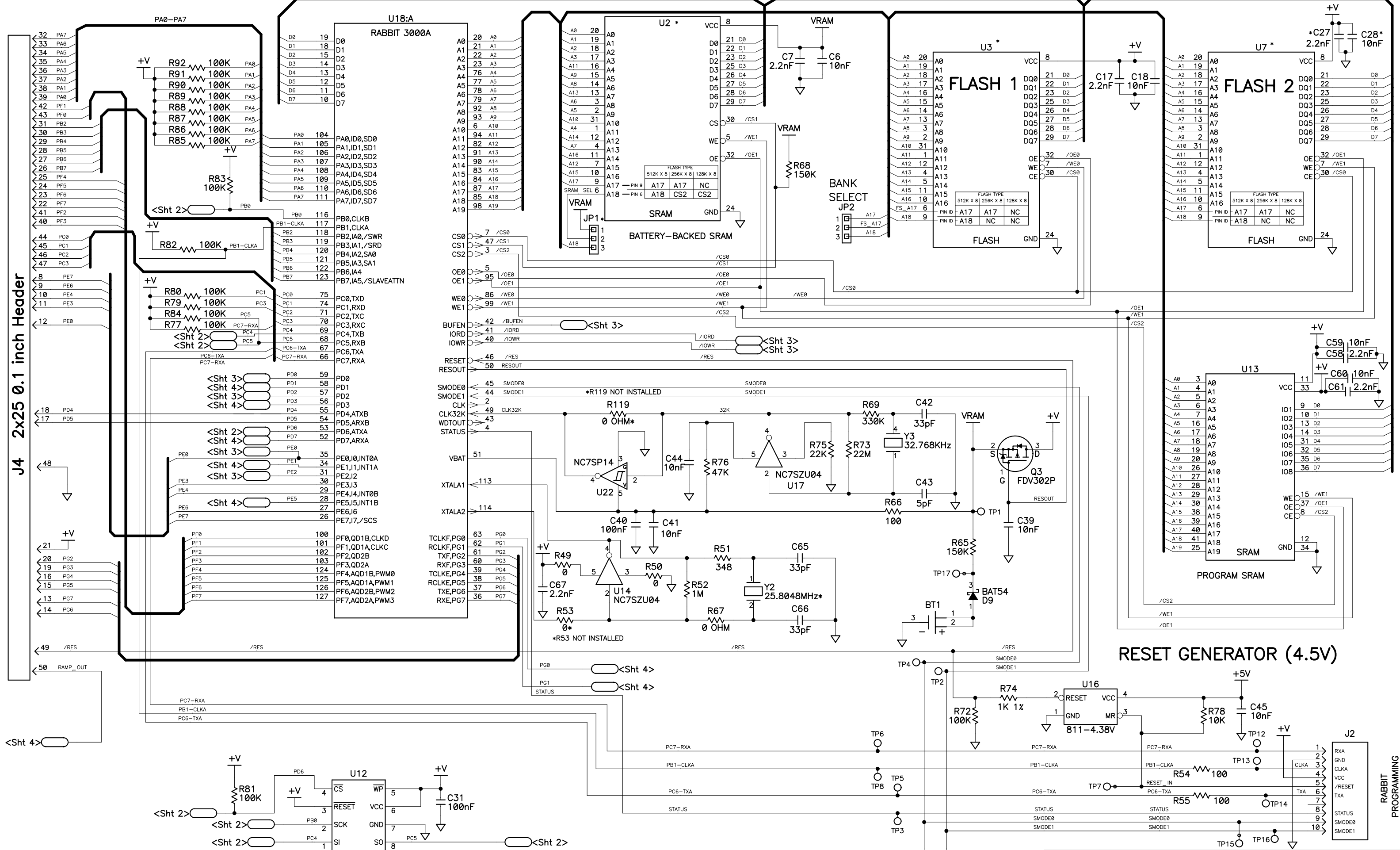
REVISION HISTORY			REVISION APPROVAL			
REV	ECO	DESCRIPTION	PROJECT ENGINEER	APPROVAL DATE	DOCUMENT CONTROL	APPROVAL DATE
A	E12963	INITIAL RELEASE	DM	10/28/04	KF	10/28/04
B	E13035	IMPROVE STUFFING CHART DATA AND PRODUCT NAMING. ADD VOLTAGE INFORMATION TO +V.	VO	11/17/04	KF	11/12/04
C	E13056	CHANGE CPU CLOCK CIRCUIT TO ALWAYS USE BUFFER. IMPROVE FLEXIBLE OPTION CHART.	VO	11/29/04	KF	11/29/04
D	E13107	MADE CORRECTIONS TO POWER INPUT OPTIONS CHART	VO	11/29/04	KF	11/29/04
E	E13115	ADD JMPR R116-7, TP9-11 SIZE INCREASED	VO	1/31/05	KF	1/31/05
F	E13206	GND ENET CONNECTOR HOUSING VIA L7, ADD R118	VO	2/21/05	KF	2/21/05
G	E14124	ADD SCHMITT TRIGER CKT TO 32KHz OSC	VO	10/17/05	KF	10/17/05
H	000205	UPDATE STUFFING TABLES TO REFLECT ONLY POWERCORE 3800 AND POWERCORE 3810 MODELS	TCP	5/15/08	KF	5/15/08
J	000277	REMOVE U10; ADD TP17, TP18 & TP19				



- NOTES: UNLESS OTHERWISE SPECIFIED;
1. ALL RESISTOR VALUES ARE IN OHMS, 1/16W, 1% or 5%
 2. ALL CAPACITORS ARE 10VDC OR HIGHER.
 3. THE ORIGIN SOURCE OF A VOLTAGE IS REPRESENTED BY (▲), AND ALL REFERENCES TO THAT VOLTAGE ARE REPRESENTED BY (⊥).
 4. OUTLINED CIRCUIT MAY NOT BE STUFFED DEPENDING ON MODEL, SEE STUFFING CHART FOR CLARIFICATION.
 5. COMPONENT VALUES SHOWN WITH AN ASTERISK (*) FOLLOWING THE VALUE, MAY HAVE DIFFERENT VALUES, OR MAY NOT BE STUFFED DEPENDING ON MODEL.

COPYRIGHT 2008, RABBIT SEMI

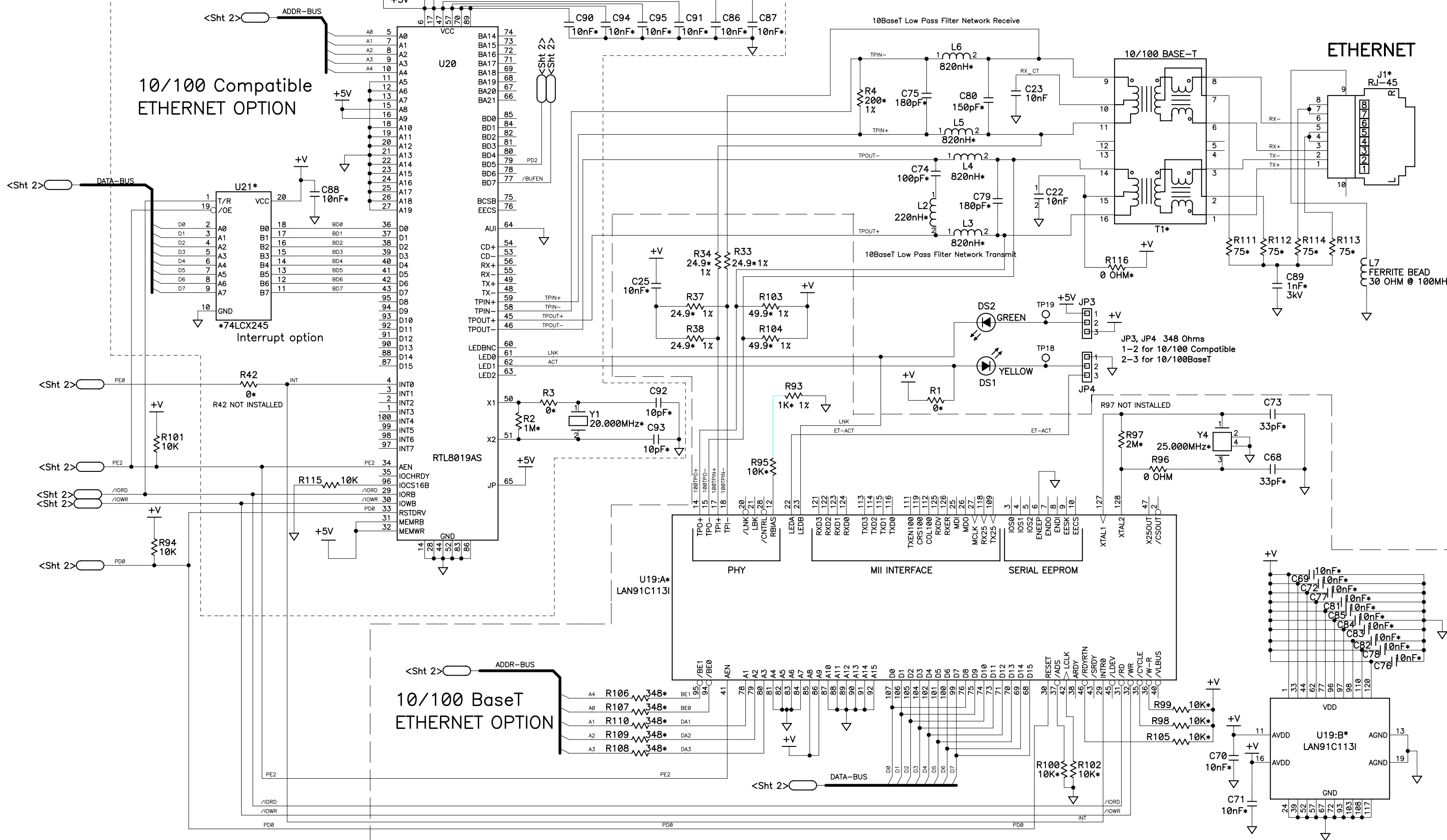
APPEND THE FOLLOWING DOCUMENTS WHEN CHANGING THIS DOCUMENT:		DRAWING CONTENT:		TITLE	
		DRAWN BY: (INITIAL RELEASE)		SCHEMATIC DIAGRAM PowerCore™	
		DARREN MUSGROVE			
		REVISED BY:			
		TCP	5/12/08	RABBIT SEMICONDUCTOR www.rabbit.com	
		APPROVALS: INITIAL RELEASE			
		PROJECT ENGINEER:		SIZE	DWG NO.
		ENGINEERING MANAGER:		B	090-0193
		SIGNATURES	DATE	SCALE	RELEASE DATE
				NONE	
					SHEET 1 OF 5



RESET GENERATOR (4.5V)

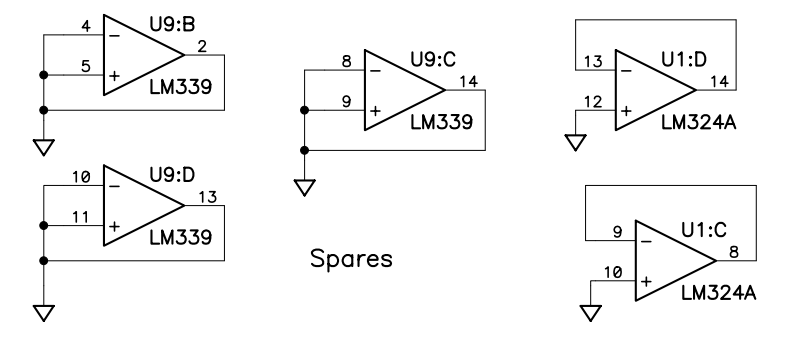
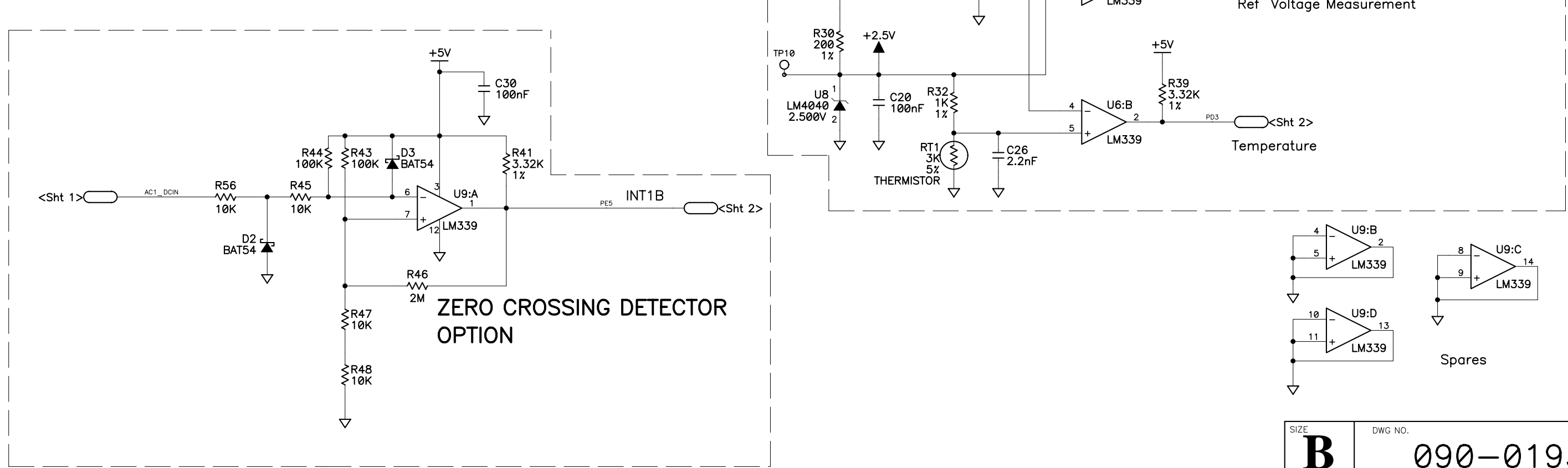
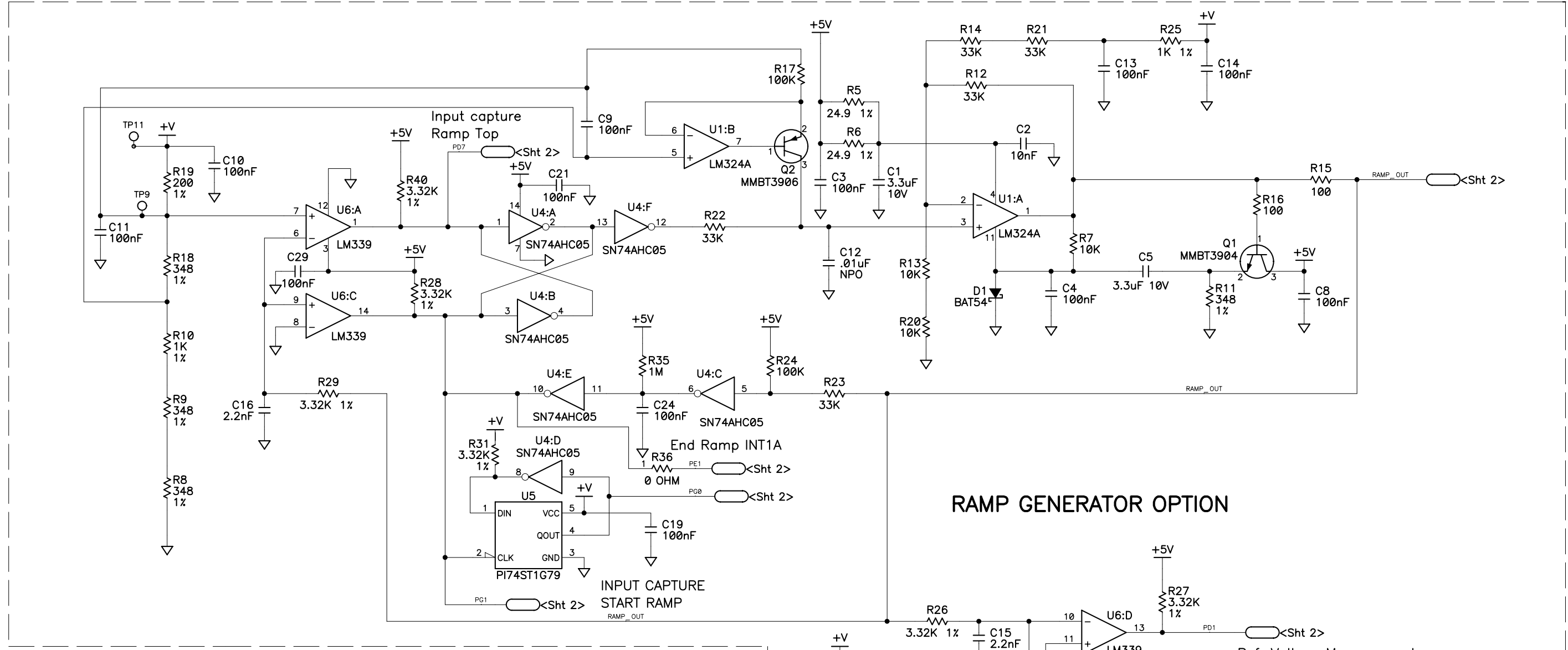
SIZE	DWG NO.
B	090-0193
SCALE	REV LTR
NONE	H
SHEET	2 OF 5

10/100 Compatible ETHERNET OPTION



ETHERNET

10/100 BaseT ETHERNET OPTION



SIZE B	DWG NO. 090-0193
SCALE NONE	REV LTR H
SHEET 4 OF 5	

CORE MODULE STUFFING CHART

CIRCUIT	PowerCore 3800	PowerCore 3810
POWER INPUT	FULL-WAVE CENTERED TAPPED W/ ZERO CROSSING	FULL-WAVE CENTERED TAPPED W/ ZERO CROSSING
DC SUPPLY	2A	1A
CLOCK SPEED	51.6MHz	25.8MHz
FLASH 1	512K STANDARD	512K STANDARD
FLASH 2	NOT INSTALLED	NOT INSTALLED
SERIAL FLASH	1 Meg	NOT INSTALLED
FAST SRAM	512K	NOT INSTALLED
BB SRAM	512K	256K
ETHERNET	10/100 Compatible	NOT INSTALLED
RAMP GENERATOR	INSTALLED	INSTALLED

FLASH 1		
PART	512K	NOT INSTALLED
U3	512K	NOT INSTALLED
JP2	1-2	NOT INSTALLED

FLASH 2		
PART	512K	NOT INSTALLED
U7	512K	NOT INSTALLED

SERIAL FLASH		
PART	1 Meg	NOT INSTALLED
U12	1 Meg	NOT INSTALLED

FAST SRAM		
PART	512K	NOT INSTALLED
U13	512K	NOT INSTALLED

BB SRAM		
PART	512K	256K
U2	512K	256K
JP1	2-3	1-2

POWER INPUT OPTIONS

CIRCUIT	PART	FULL-WAVE CENTERED TAPPED
POWER INPUT	R57, R58	INSTALLED
	R59, R60	NOT INSTALLED
	D5	INSTALLED
	D6	INSTALLED
	D7,D8	NOT INSTALLED
	TVS1	INSTALLED
	TVS2	INSTALLED
	R117, R118	NOT INSTALLED
POWER CONNECTOR	D4,C32,L1 C34,U11,XU11	INSTALLED
	J3	INSTALLED
ZERO CROSSING	R41,R43,R44 R45,R46,R47, R48,R56,C30, U9,D2,D3	INSTALLED

DC SUPPLY OPTIONS

CIRCUIT	PART	1A	2A
INPUT DIODES	D5, D6	1N4003	S3BB
	D7, D8	NOT INSTALLED	NOT INSTALLED
REGULATOR	U11	LM2575	LM2592HV
CATCH DIODE	D4	B140	SS36
INDUCTOR	L1	330uH	47uH
HEAT-SINK	XU11	NOT INSTALLED	INSTALLED
HEADER	J3	INSTALLED	INSTALLED

RAMP GENERATOR OPTIONS

CIRCUIT	PART	RAMP GENERATOR	NO RAMP GENERATOR
CAPACITORS	C1, C2, C3, C4, C5, C8, C9, C10, C11, C12, C13, C14, C15, C16, C19, C20, C21, C24, C26, C29	INSTALLED	NOT INSTALLED
RESISTORS	R5, R6, R7, R8, R9, R10, R11, R12, R13, R14, R15, R16, R17, R18, R19, R20, R21, R22, R23, R24, R25, R26, R27, R28, R29, R30, R31, R32, R35, R36, R39, R40	INSTALLED	NOT INSTALLED
DIODE	D1	INSTALLED	NOT INSTALLED
THERMISTOR	RT1	INSTALLED	NOT INSTALLED
ICS	U1, U4, U5, U6	INSTALLED	NOT INSTALLED
TRANSISTORS	Q1, Q2	INSTALLED	NOT INSTALLED
VOLTAGE REFERENCE	U8	INSTALLED	NOT INSTALLED

ETHERNET OPTIONS

CIRCUIT	PART	10/100 Compatible	NO ETHERNET
ETHERNET PHY	U19	NOT INSTALLED	NOT INSTALLED
	U20	INSTALLED	NOT INSTALLED
DATA BUFFER	U21	INSTALLED	NOT INSTALLED
20MHz OSC	Y1, R3, R2 C92, C93	INSTALLED	NOT INSTALLED
25MHz OSC	Y4, R96 C68, C73	NOT INSTALLED	NOT INSTALLED
10/100 DISCREETS	C25, C69, C70, C71 C72, C76, C77, C78, C81, C82, C83, C84, C85 R1, R33, R34, R37, R38, R93, R95, R98, R99, R100, R102, R103, R104, R105, R106, R107, R108, R109, R110, R116	NOT INSTALLED	NOT INSTALLED
10/100 Compatible DISCREETS	C74, C75, C79, C80, C86, C87, C88, C90, C91 C94, C95 R4, R115 L2, L3, L4, L5 L6	INSTALLED	NOT INSTALLED
LED'S	DS1, DS2	INSTALLED	NOT INSTALLED
LED SELECT	JP3 348 OHM JP4 348 OHM	1-2	NOT INSTALLED
ETHERNET OUTPUT	C22, C23, C89 R111, R112, R113, R114, T1, J1, L7	INSTALLED	NOT INSTALLED