

## 1. General

FLASH166 is a DOS program. Therefore special settings are necessary to run this tool under Windows XP or Windows 2000.

## 2. Windows 2000

Under Windows 2000 it is necessary to install another driver for the serial communication (Hserial.sys). The latest version of this driver can be downloaded from the following web-site: <http://www.rippstein.net/Hiserial.htm>

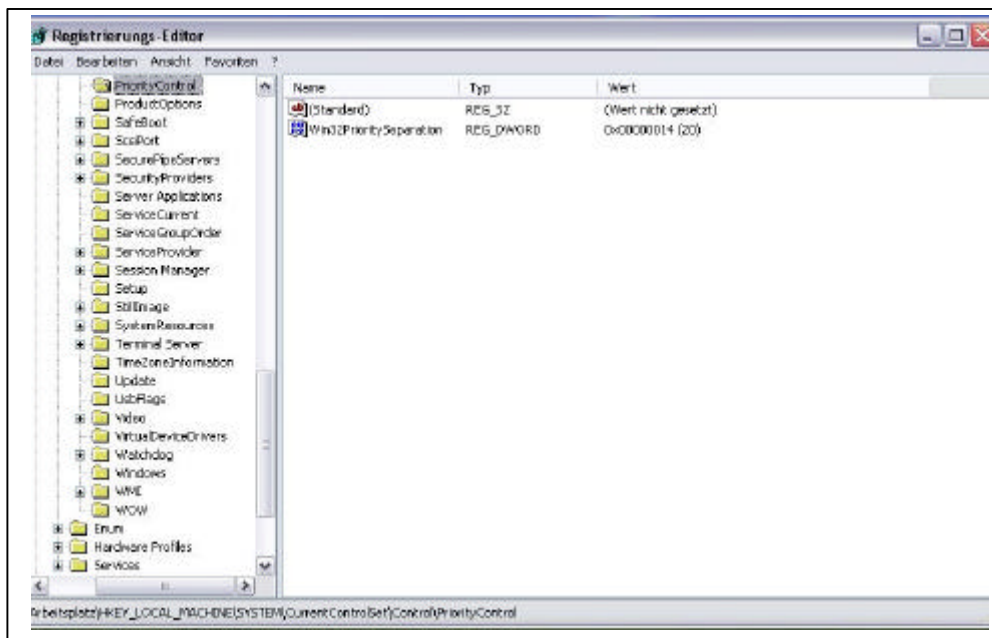
From the FS homepage version 1.5 of HiSerial.sys is available.

## 3. Windows XP

Under Windows XP, there are two possibilities:

- Creating a command line window
- Creating a link to the FLASH166 tool

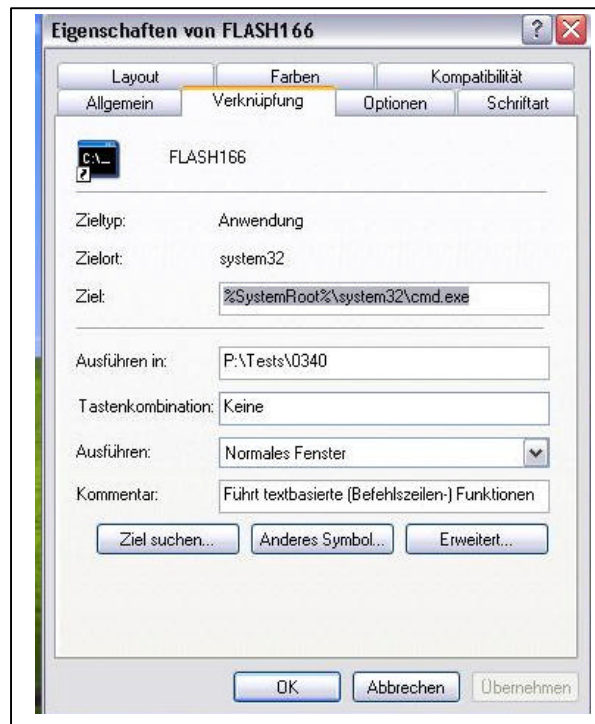
In both cases, the registry has to be changed by REGEDIT:



Parameter Win32PrioritySeparation has to be changed to the value 20 (decimal). This change gives the window in the foreground a higher priority.

### 3.1. Command line window

The following settings are necessary, when the command line window is used to run FLASH166:



It is important to use CMD.EXE and not COMMAND.EXE.

Nevertheless with the command line window timeouts can appear.

### 3.2. Link to FLASH166

Creating a link to the file FLASH166.EXE offers more settings. With the following settings an error-free communication was possible:

