
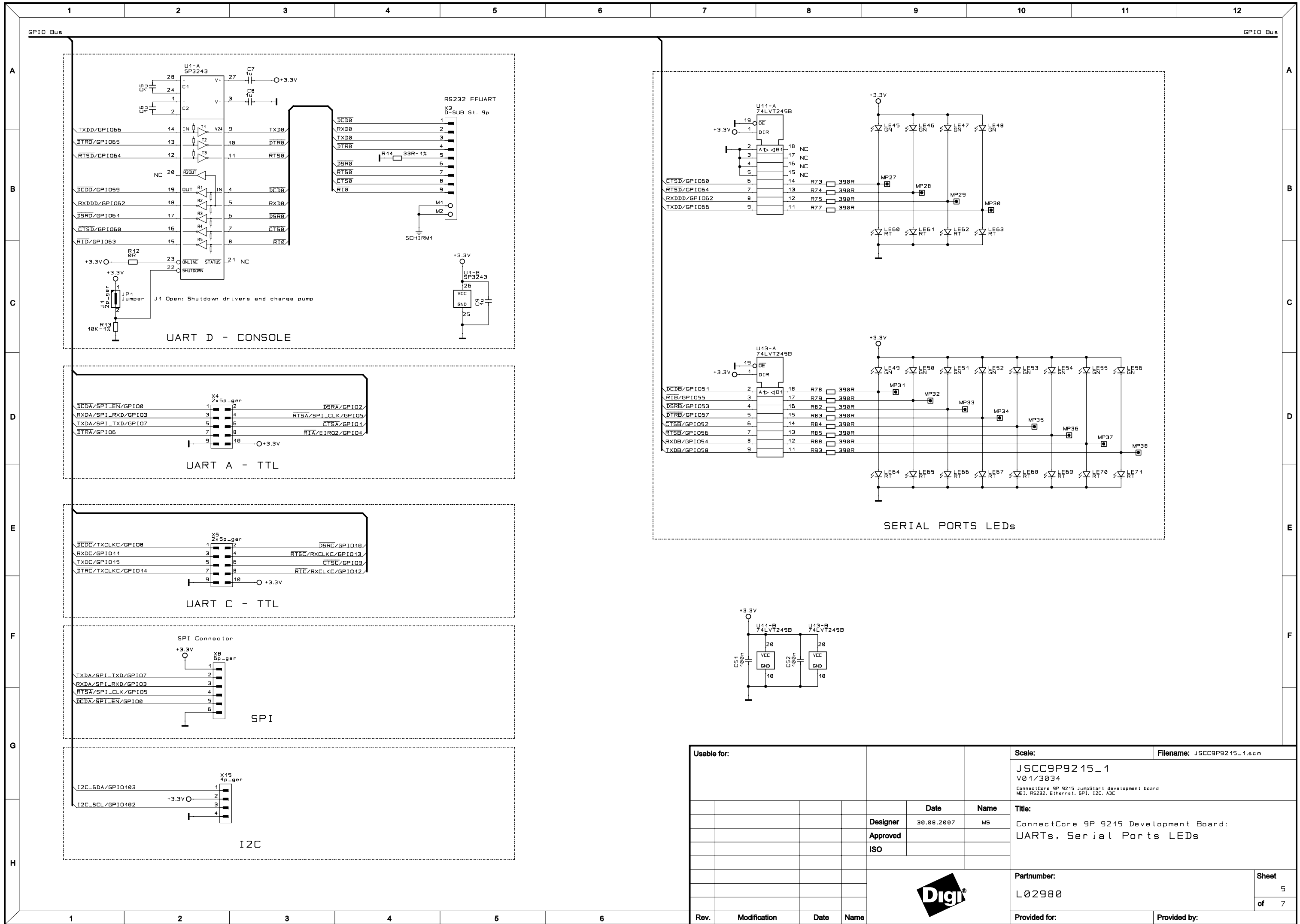

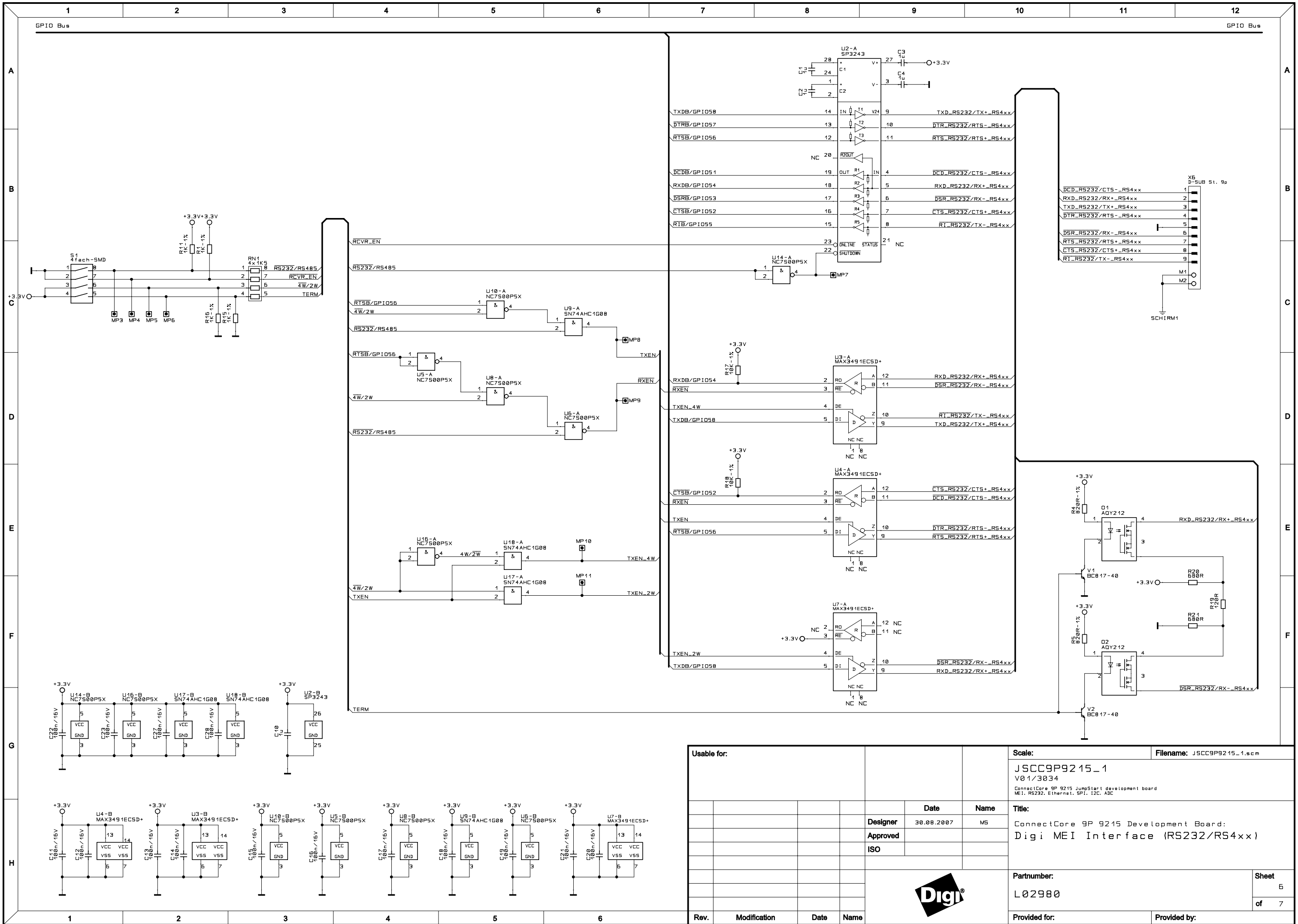


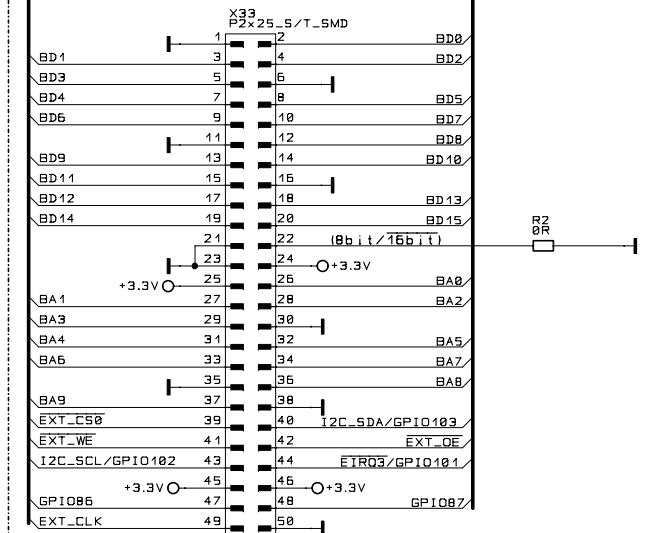
Usable for:						Scale:		Filename: JSCC9P9215_1.scm	
						JSCC9P9215_1 V01/3034 ConnectCore 9P 9215 JumpStart development board ME1, RS232, Ethernet, SPI, I2C, ADC			
					Date	Name	Title: ConnectCore 9P 9215 Development Board: Signal Rails		
				Designer	30.08.2007	MS			
				Approved					
				ISO					
							Partnumber:		Sheet
							L02980		3
									of
									7
Rev.	Modification	Date	Name				Provided for:		Provided by:



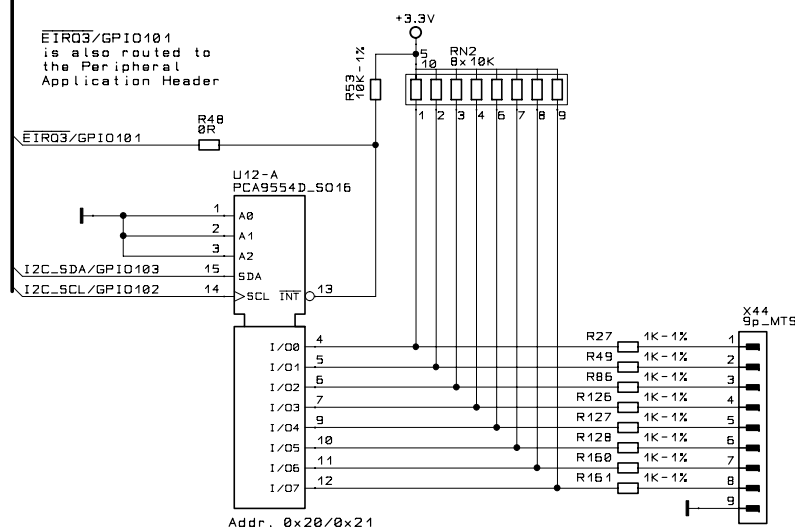
Usable for:						Scale:		Filename: JSCC9P9215_1.scm		
						JSCC9P9215_1 V01/3034 ConnectCore 9P 9215 JumpStart development board ME1, RS232, Ethernet, SPI, I2C, ADC				
					Date	Name	Title: ConnectCore 9P 9215 Development Board: UARTs, Serial Ports LEDs			
				Designer	30.08.2007	MS				
				Approved						
				ISO						
							Partnumber:		Sheet	
							L02980		5	
									of	7
Rev.	Modification	Date	Name				Provided for:		Provided by:	



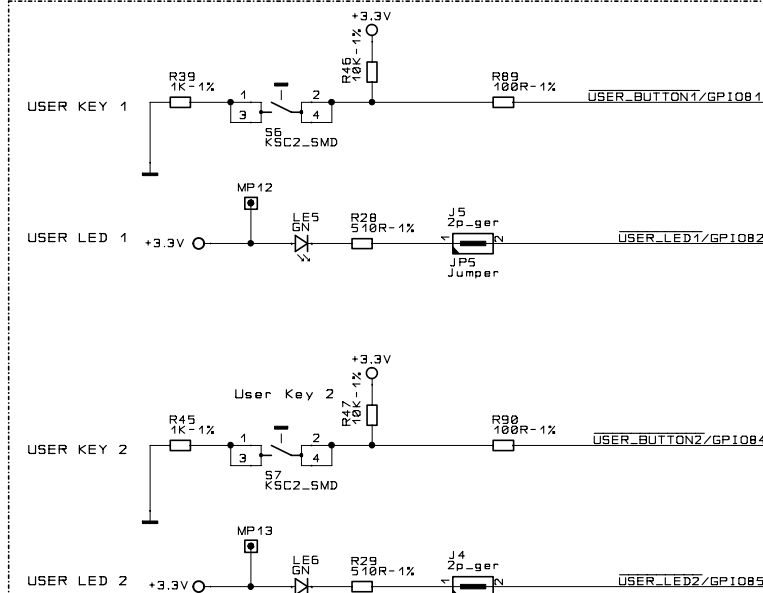
Usable for:				Scale:		Filename: JSCC9P9215_1.scm	
				JSCC9P9215_1			
				V01/3034			
				ConnectCore 9P 9215 JumpStart development board			
				ME1: RS232, Ethernet, SPI, I2C, ADC			
				Designer	30.08.2007	Name	MS
				Approved			
				ISO			



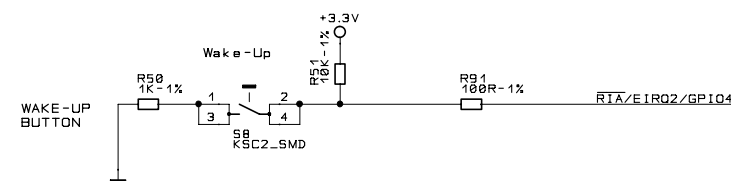
PERIPHERAL APPLICATION HEADER



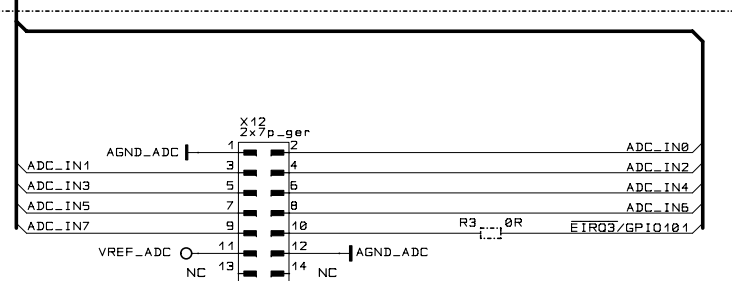
DIGITAL I/Os



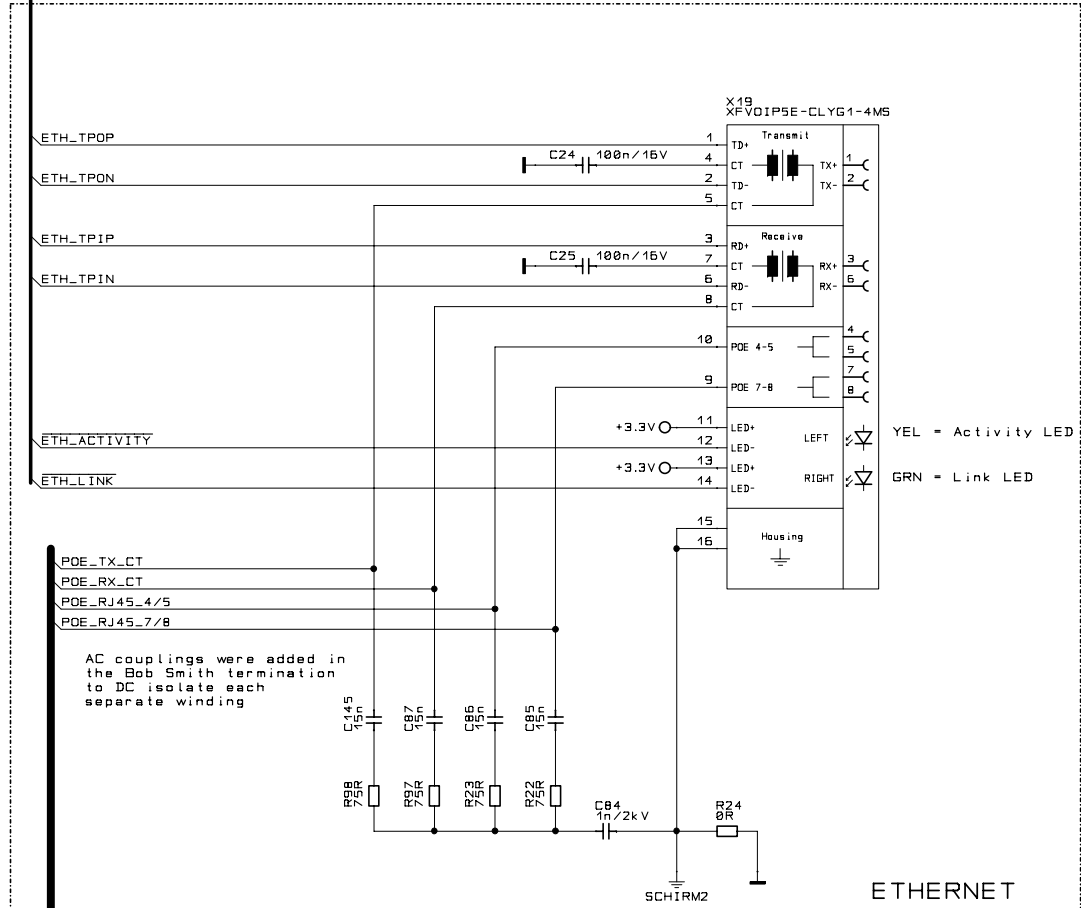
USER INTERFACE



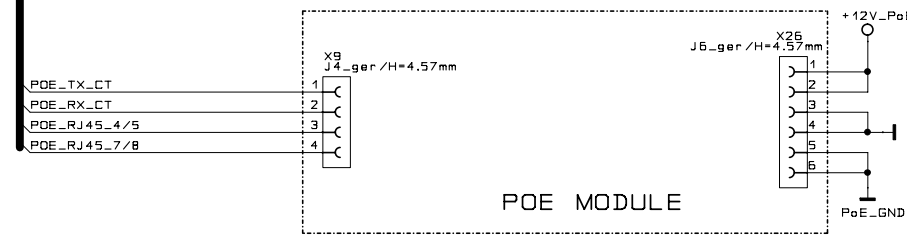
WAKE-UP BUTTON




ADC HEADER



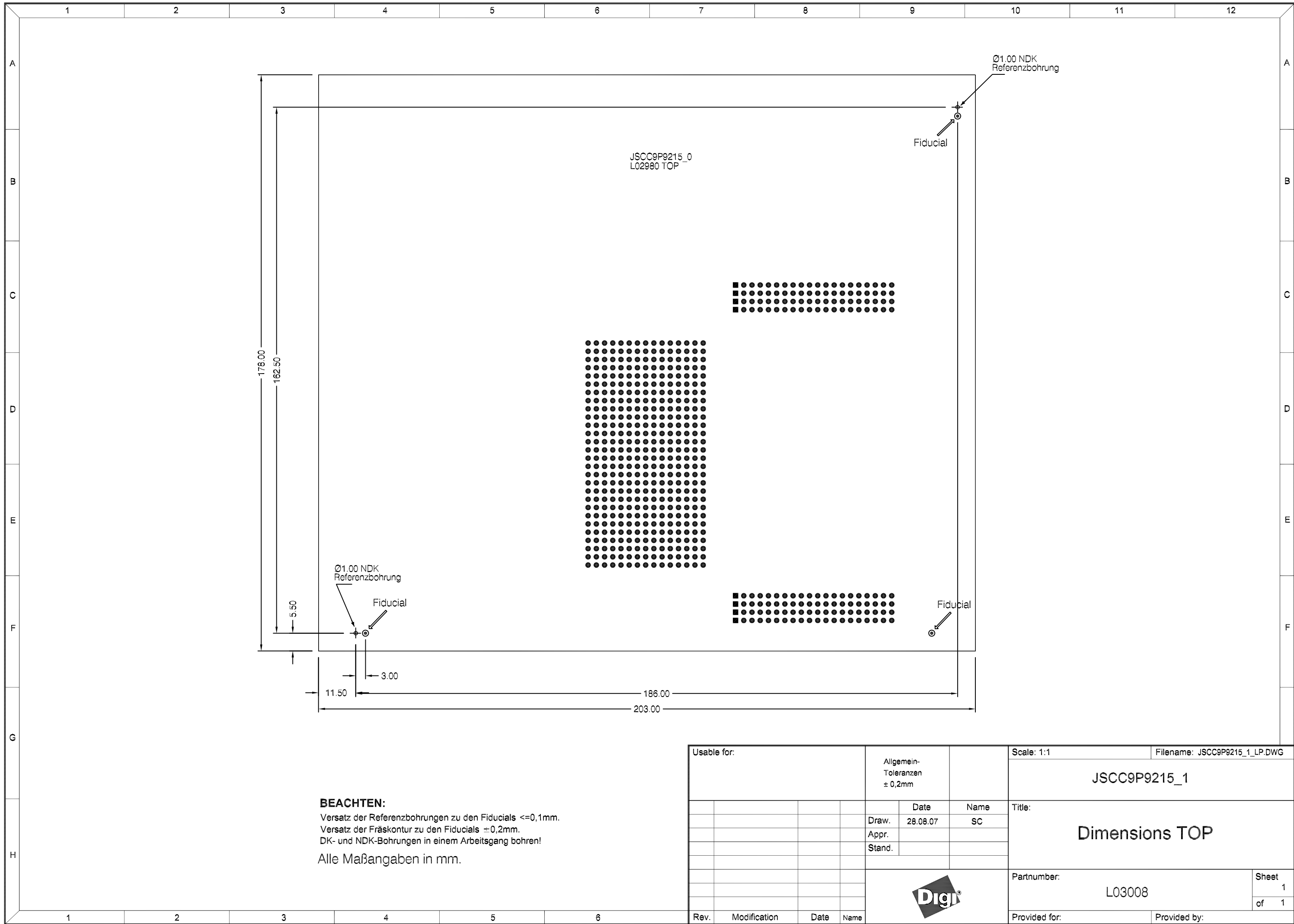
ETHERNET




POE MODULE


Usable for:								Scale:		Filename: JSCC9P9215_1.scm	
								JSCC9P9215_1 V01/3034 ConnectCore 9P 9215 JumpStart development board ME1, RS232, Ethernet, SPI, I2C, ADC			
					Date		Name	Title: ConnectCore 9P 9215 Development Board: ADC, CAN, USER Interface, Peripheral Ethernet + PoE headers			
				Designer	30.08.2007		MS				
				Approved							
				ISO							
								Partnumber:		Sheet	
								L02980		7	
										of 7	
Rev.	Modification	Date	Name					Provided for:		Provided by:	

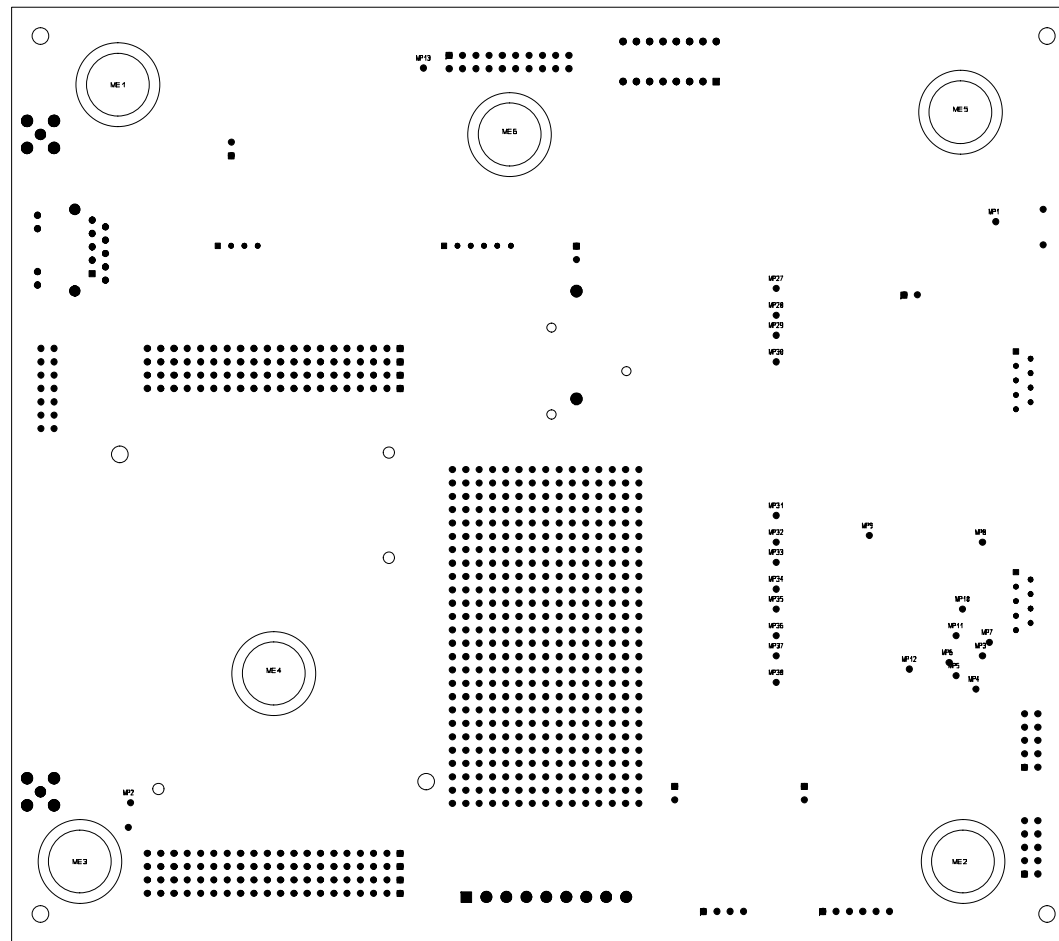





BEACHTEN:
Versatz der Referenzbohrungen zu den Fiducials $\leq 0,1\text{mm}$.
Versatz der Fräskontur zu den Fiducials $\pm 0,2\text{mm}$.
DK- und NDK-Bohrungen in einem Arbeitsgang bohren!
Alle Maßangaben in mm.

Usable for:				Allgemein-Toleranzen ± 0,2mm		Scale: 1:1		Filename: JSCC9P9215_1_LP.DWG					
						JSCC9P9215_1							
				Date	Name	Title: Dimensions TOP							
				Draw.	28.08.07					SC			
				Appr.									
				Stand.									
							Partnumber: L03008		Sheet 1				
									of 1				
Rev.	Modification	Date	Name							Provided for:		Provided by:	

Usable for:							Scale:	Filename: JSCC9P9215_1.pcb
							JSCC9P9215_1 V01/3034 ConnectCore 9P 9215 JumpStart development board ME1, RS232, Ethernet, SPI, I2C, ADC	
					Date	Name	Title:	
				Designer	30.08.2007	SC	Placement TOP Side	
				Approved				
				ISO				
							Partnumber:	Sheet
							L03008	1
								of 2
Rev.	Modification	Date	Name				Provided for:	Provided by:



JSCC9P9215_1 Placement BOTTOM Side 30.08.07

Usable for:						Scale: Filename: JSCC9P92 15_1.pcb JSCC9P92 15_1 V01/3034 ConnectCore 9P 9215 JumpStart development board ME1, RS232, Ethernet, 9PI, 12C, ADC	
				Date	Name	Title: Placement BOTTOM Side	
			Designer	30.08.2007	SC		
			Approved				
			ISO				
						Partnumber:	Sheet
						L03008	2
							of 2
Rev.	Modification	Date	Name			Provided for:	Provided by: