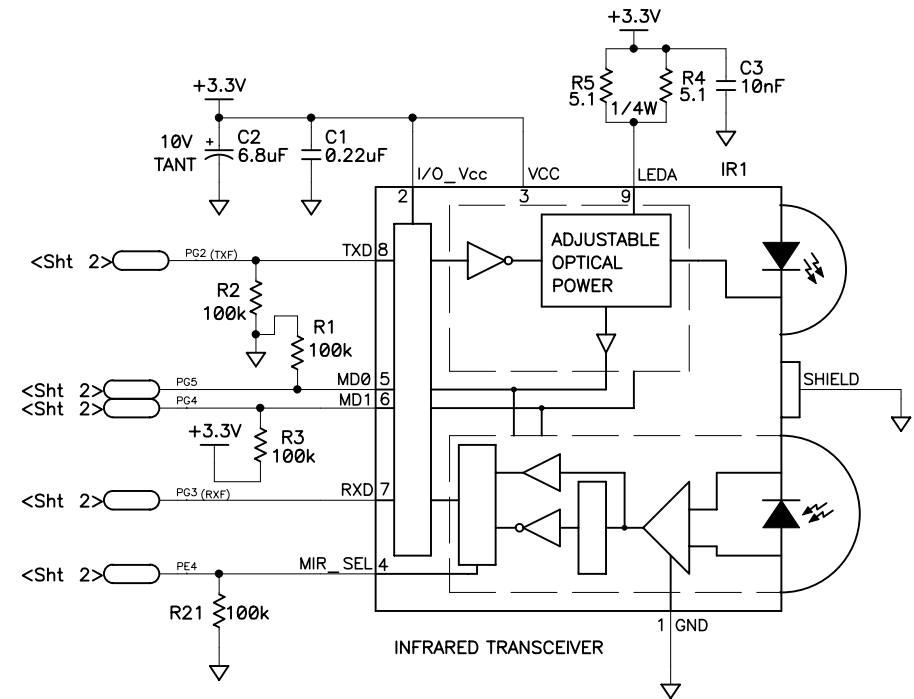
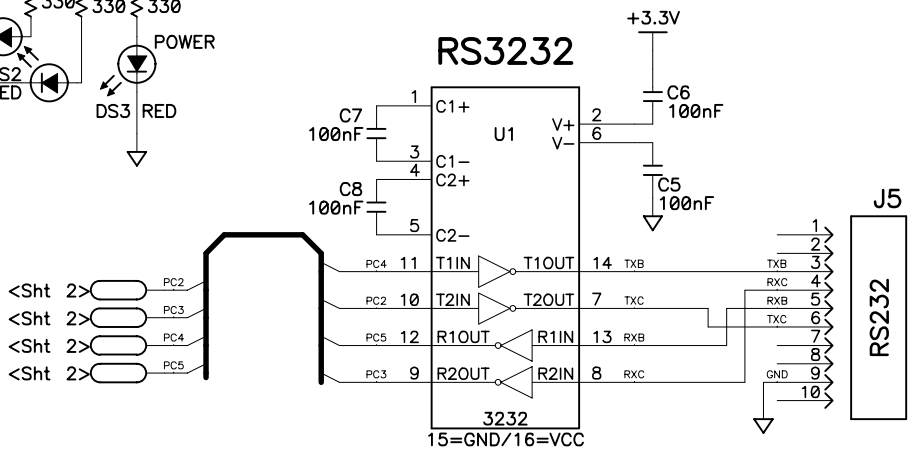
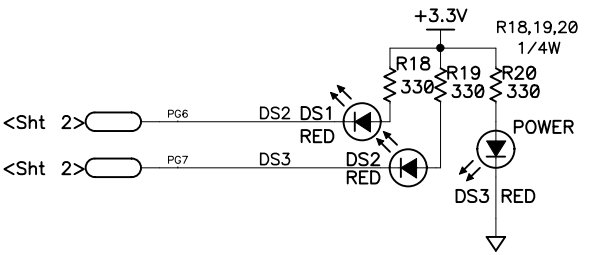
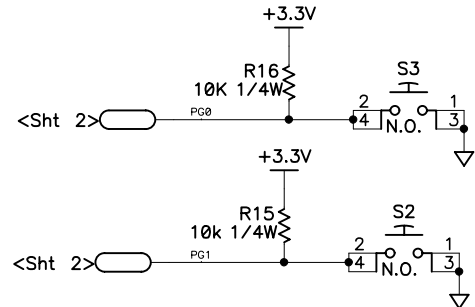
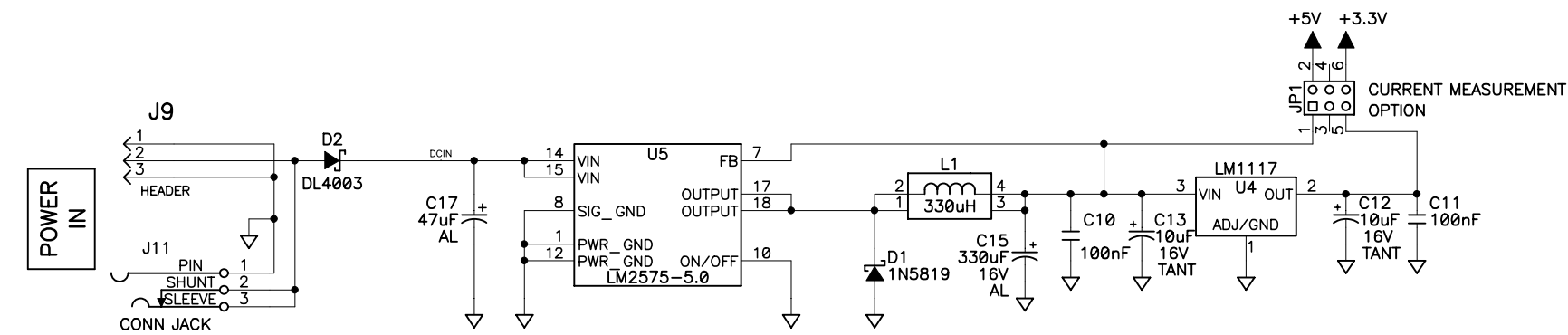
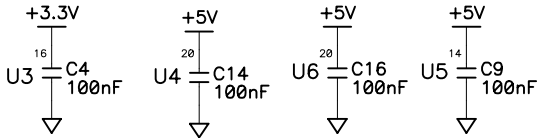
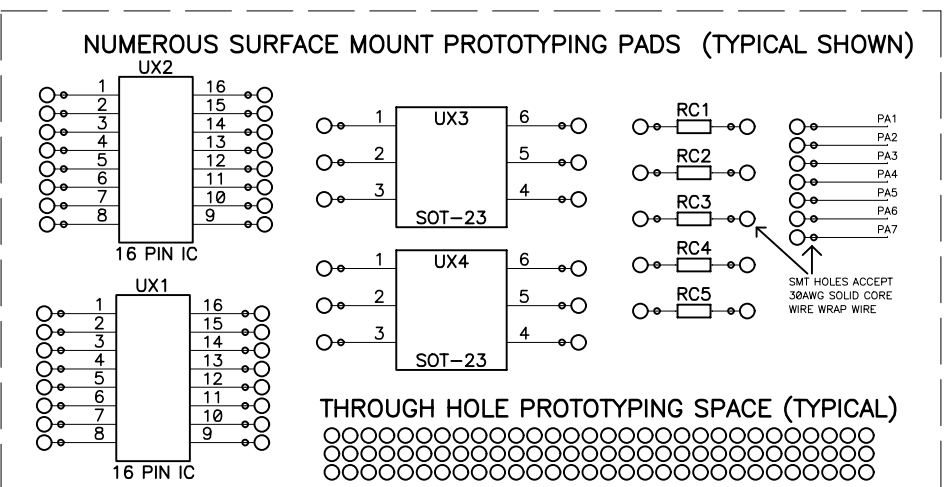



Power Table						
Ref Des	Device(Type)	Package	GND	+5V	+3.3V	Part
U1	660-0175	SOIC-16	15		16	RS3232
U2	602-0008	SOIC-14	7,5,4,13,12,10,9	14,1		74HC08
U3	604-0245	SOIC-20	10	20		74HCT245
U4	661-0044	TO-252	1			LM1117T
U5	661-0015	SOIC-24	1,12,8,10			LM2575
U6	604-0245	SOIC-20	10,1,15,16,17	20		74HCT245

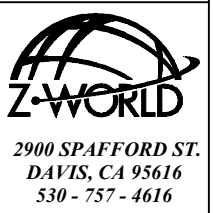


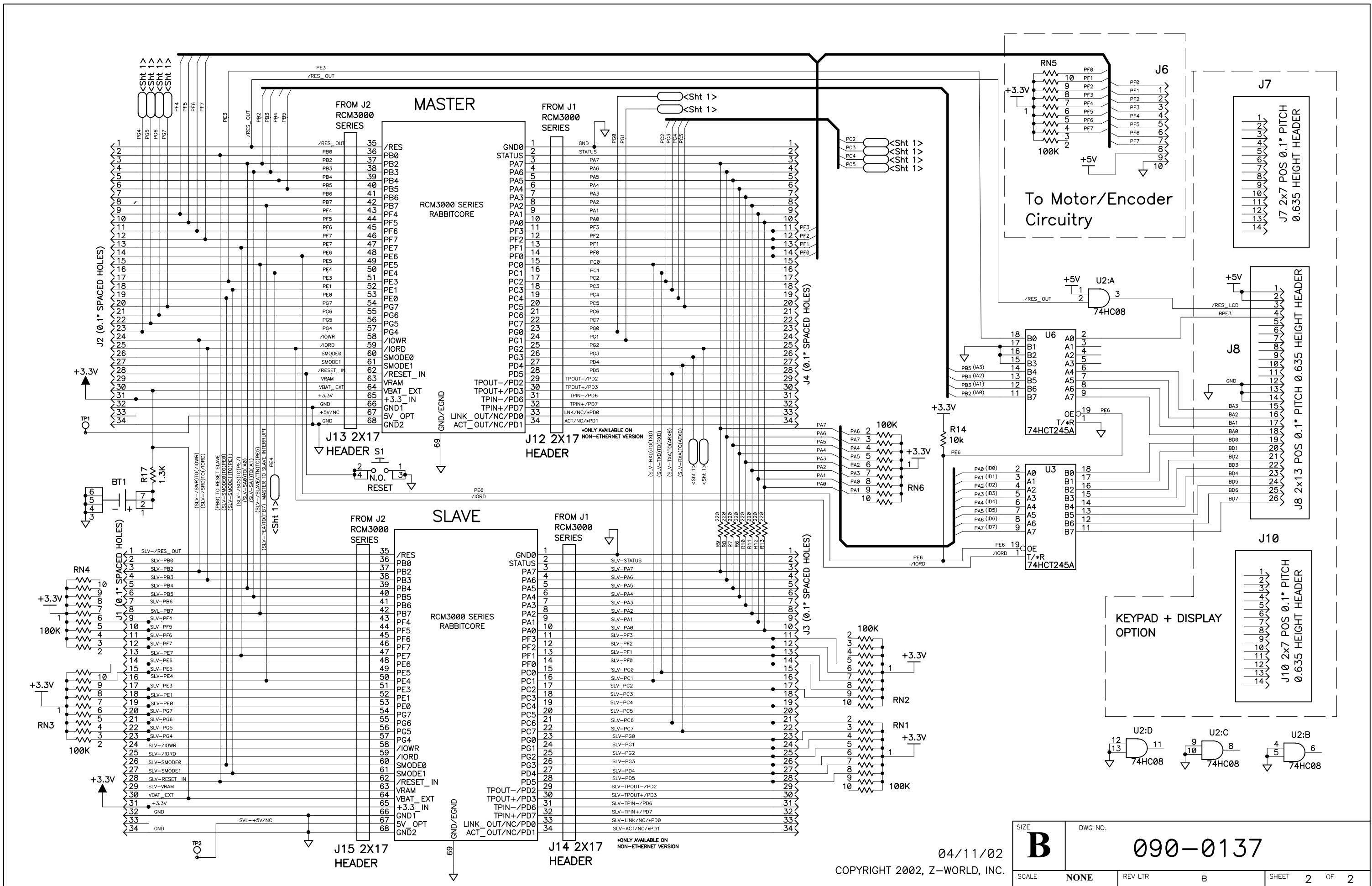
- NOTES: UNLESS OTHERWISE SPECIFIED;
1. ALL RESISTOR VALUES ARE IN OHMS, 1/10W, 5%
 2. ALL CAPACITORS ARE 50VDC OR HIGHER.
 3. THE ORIGIN SOURCE OF A VOLTAGE IS REPRESENTED BY (\uparrow), AND ALL REFERENCES TO THAT VOLTAGE ARE REPRESENTED BY (\downarrow).
 4. OUTLINED CIRCUIT MAY NOT BE STUFFED DEPENDING ON MODEL, SEE STUFFING CHART FOR CLARIFICATION.
 5. COMPONENT VALUES SHOWN WITH AN ASTERISK (*) FOLLOWING THE VALUE, MAY HAVE DIFFERENT VALUES, OR MAY NOT BE STUFFED DEPENDING ON MODEL.



APPEND THE FOLLOWING DOCUMENTS WHEN CHANGING THIS DOCUMENT:		DRAWING CONTENT:		TITLE SCHEMATIC DIAGRAM RCM3000 PROTO BOARD		 2900 SPAFFORD ST. DAVIS, CA 95616 530 - 757 - 4616					
		DRAWN BY: (INITIAL RELEASE) D.MUSGROVE	03/15/02								
		REVISED BY: D.MUSGROVE	04/11/02	SIZE B DWG NO. 090-0137							
		APPROVALS: INITIAL RELEASE									
		PROJECT ENGINEER: D.MUSGROVE	3/18/02								
		ENGINEERING MANAGER: R.MATTHEWS	3/19/02								
		SIGNATURES	DATE	SCALE	NONE	RELEASE DATE	3/19/02	SHEET	1	OF	2

COPYRIGHT 2002, Z-WORLD, INC.





04/11/02
COPYRIGHT 2002, Z-WORLD, INC.