



# **RabbitCore RCM2200**

C-Programmable Module with Ethernet

## **Getting Started Manual**

019-0096 • 020208-D

# **RabbitCore RCM2200 Getting Started Manual**

Part Number 019-0096 • 0020208-D • Printed in U.S.A.

©2001 Z-World Inc. • All rights reserved.

Z-World reserves the right to make changes and improvements to its products without providing notice.

## **Notice to Users**

Z-WORLD PRODUCTS ARE NOT AUTHORIZED FOR USE AS CRITICAL COMPONENTS IN LIFE-SUPPORT DEVICES OR SYSTEMS UNLESS A SPECIFIC WRITTEN AGREEMENT REGARDING SUCH INTENDED USE IS ENTERED INTO BETWEEN THE CUSTOMER AND Z-WORLD PRIOR TO USE. Life-support devices or systems are devices or systems intended for surgical implantation into the body or to sustain life, and whose failure to perform, when properly used in accordance with instructions for use provided in the labeling and user's manual, can be reasonably expected to result in significant injury.

No complex software or hardware system is perfect. Bugs are always present in a system of any size. In order to prevent danger to life or property, it is the responsibility of the system designer to incorporate redundant protective mechanisms appropriate to the risk involved.

All Z-World products are 100 percent functionally tested. Additional testing may include visual quality control inspections or mechanical defects analyzer inspections. Specifications are based on characterization of tested sample units rather than testing over temperature and voltage of each unit. Z-World may qualify components to operate within a range of parameters that is different from the manufacturer's recommended range. This strategy is believed to be more economical and effective. Additional testing or burn-in of an individual unit is available by special arrangement.

## **Trademarks**

Rabbit 2000 is a trademark of Rabbit Semiconductor.

Dynamic C is a registered trademark of Z-World Inc.

### **Z-World, Inc.**

2900 Spafford Street  
Davis, California 95616-6800  
USA

Telephone: (530) 757-3737  
Fax: (530) 757-3792

[www.zworld.com](http://www.zworld.com)

### **Rabbit Semiconductor**

2932 Spafford Street  
Davis, California 95616-6800  
USA

Telephone: (530) 757-8400  
Fax: (530) 757-8402

[www.rabbitsemiconductor.com](http://www.rabbitsemiconductor.com)

# Table of Contents

<b>Chapter 1: Introduction &amp; Overview</b>	<b>1</b>
1.1 RCM2200 Description .....	1
1.1.1 Physical & Electrical Specifications .....	2
1.2 Development Software.....	3
1.3 How to Use This Manual .....	3
1.3.1 Additional Product Information .....	3
1.3.2 Additional Reference Information .....	3
1.3.3 Using Online Documentation .....	4
<b>Chapter 2: Hardware Setup</b>	<b>5</b>
2.1 Development Kit Contents.....	5
2.2 Prototyping Board .....	6
2.2.1 Prototyping Board Features .....	7
2.2.2 Prototyping Board Expansion .....	8
2.3 Development Hardware Connections .....	9
2.3.1 Attach Module to Prototyping Board .....	9
2.3.2 Connect Programming Cable .....	10
2.3.3 Connect Ethernet Network Cable .....	11
2.3.4 Connect Power .....	12
2.4 Where Do I Go From Here?.....	13
2.4.1 Technical Support .....	13
<b>Chapter 3: Software Installation &amp; Overview</b>	<b>15</b>
3.1 An Overview of Dynamic C .....	15
3.1.1 Hardware Requirements .....	16
3.2 Installing Dynamic C .....	17
3.2.1 Program & Documentation File Location .....	17
3.2.2 Installation Type .....	18
3.2.3 Select COM Port .....	19
3.2.4 Desktop Icons .....	19
3.3 Starting Dynamic C.....	20
3.3.1 Communication Error Messages .....	20
3.4 Sample Programs .....	21

<b>Chapter 4: Using the TCP/IP Features</b>	<b>23</b>
4.1 TCP/IP Connections .....	23
4.2 Running TCP/IP Sample Programs.....	24
4.3 IP Addresses Explained.....	26
4.4 How IP Addresses are Used .....	27
4.5 Dynamically Assigned Internet Addresses .....	28
4.6 Placing Your Device on the Internet.....	29
4.7 How to Set IP Addresses in the Sample Programs.....	30
4.8 How to Set Up your Computer's IP Address for Direct Connect .....	31
4.9 Run the PINGME.C Demo.....	32
4.10 Running More Demo Programs With Direct Connect .....	32
4.11 Where Do I Go From Here?.....	33
<b>Index</b>	<b>35</b>
<b>Schematics</b>	<b>37</b>

# 1. INTRODUCTION & OVERVIEW

The RCM2200 is an advanced module that incorporates the powerful Rabbit 2000™ microprocessor, flash memory, static RAM, digital I/O ports, and a 10Base-T Ethernet port, all on a PCB just half the size of a business card.

## 1.1 RCM2200 Description

The RCM2200 is a small-footprint module designed for use on a motherboard that supplies power and interface to real-world I/O devices. Its two 26-pin connection headers provide 26 parallel user I/O lines, shared with three serial ports, along with data, address and control lines. A fourth serial port and three additional I/O lines are available on the programming header.

A fully-enabled slave port permits glueless master-slave interface with another Rabbit-based system. The slave port may also be used with non-Rabbit systems, although additional logic may be required.

The RCM2200 is equipped with a 10Base-T Ethernet port, 256K flash memory and 128K static RAM.

There are three production models in the RCM2200 series. If the standard models do not serve your needs, other variations can be specified and ordered in production quantities. Contact your Z-World or Rabbit Semiconductor sales representative for details.

Table 1 below provides a summary of all the models in the RCM2200 family.

**Table 1. RCM2200 Versions**

Feature	RCM2200	RCM2210	RCM2250
Microprocessor	Rabbit 2000 running at 22.1 MHz		
Flash Memory	256K	256K	512K
Static RAM	128K	128K	512K
RJ-45 Ethernet Connector, Filter Capacitors, and LEDs	Yes	No	Yes
Serial Ports	4, high-speed, CMOS-compatible; 2 configurable as clocked ports; 1 clocked port dedicated to programming port use.		

In addition, a variant of the RCM2200 is available. The RCM2300 omits the Ethernet connectivity but offers a much smaller footprint, one-half the size of the RCM2200.

Another RabbitCore module can be used to reprogram an RCM2200. This reprogramming (and debugging) can be done via the Internet using Z-World's RabbitLink network programming gateway or with Ethernet-equipped RabbitCore RCM2100 and RCM2200 models using Dynamic C's DeviceMate features. The RCM2200 is particularly suitable for use as an inexpensive hardware platform for Dynamic C's DeviceMate features.

### 1.1.1 Physical & Electrical Specifications

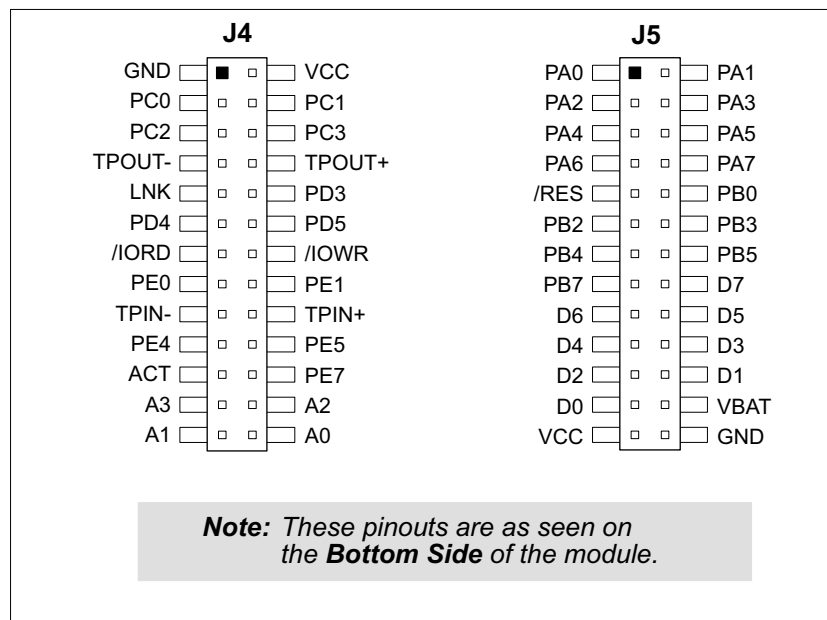
Table 2 lists the basic specifications for the RCM2200.

**Table 2. RCM2200 Specifications**

Specification	Data
Power Supply	4.75 – 5.25 V DC (134 mA at 22.1 MHz clock speed)
Size	2.3" x 1.6" x 0.86" (59 mm x 41 mm x 22 mm)
Environmental	–40°C to 70°C, 5–95% humidity, noncondensing

**NOTE:** For complete product specifications, see Appendix A in the *RabbitCore RCM2200 User's Manual*.

The RCM2200 modules have two 26-pin headers to which cables can be connected, or which can be plugged into matching sockets on a production device. The pinouts for these connectors are shown in Figure 1 below.



**Figure 1. RCM2200 Connector Pinout**

## 1.2 Development Software

The RCM2200 module uses the Dynamic C development environment for rapid creation and debugging of runtime applications. Dynamic C provides a complete development environment with integrated editor, compiler and source-level debugger. It interfaces directly with the target system, eliminating the need for complex and unreliable in-circuit emulators.

Dynamic C must be installed on a Windows workstation with at least one free serial (COM) port for communication with the target system. See Chapter 3., “Software Installation & Overview.” for complete information on installing Dynamic C.

**NOTE:** The RCM2200 module requires Dynamic C v7.04 or later for development. A compatible version is included on the Development Kit CD-ROM.

## 1.3 How to Use This Manual

This *Getting Started* manual is intended to give users a quick but solid start with the RCM2200 module. It does not contain detailed information on the module hardware capabilities, the Dynamic C development environment, or the TCP/IP software support for the integrated Ethernet port. Most users will want more detailed information on some or all of these topics in order to put the RCM2200 module to effective use.

### 1.3.1 Additional Product Information

Detailed information about the RCM2200 will be found in the ***RabbitCore RCM2200 User's Manual***, provided on the accompanying CD-ROM in both HTML and Adobe PDF format.

Some advanced users may choose to skip the rest of this introductory manual and proceed directly with the detailed hardware and software information in the User's manual.

**TIP:** We recommend that anyone not thoroughly familiar with Z-World controllers at least read through the rest of this manual to gain the necessary familiarity to make use of the more advanced information.

### 1.3.2 Additional Reference Information

In addition to the product-specific information contained in the ***RabbitCore RCM2200 User's Manual***, several higher-level reference manuals are provided in HTML and PDF form on the accompanying CD-ROM. Advanced users will find these references valuable in developing systems based on the RCM2200 module:

- ***Dynamic C Premier User's Manual***
- ***An Introduction to TCP/IP***
- ***Dynamic C TCP/IP User's Manual***
- ***Rabbit 2000 Microprocessor User's Manual***

### 1.3.3 Using Online Documentation

We provide the bulk of our user and reference documentation in two electronic formats, HTML and Adobe PDF. We do this for several reasons.

We believe that providing all users with our complete library of product and reference manuals is a useful convenience. However, printed manuals are expensive to print, stock and ship. Rather than include and charge for manuals that every user may not want, or provide only product-specific manuals, we choose to provide our complete documentation and reference library in electronic form with every development kit and with our Dynamic C development environment.

**NOTE:** The most current version of Adobe Acrobat Reader can always be downloaded from Adobe's web site at <http://www.adobe.com>. We recommend that you use version 4.0 or later.

Providing this documentation in electronic form saves an enormous amount of paper by not printing copies of manuals that users don't need.

#### Finding Online Documents

The online documentation is installed along with Dynamic C, and an icon for the documentation menu is placed on the workstation's desktop. Double-click this icon to reach the menu. If the icon is missing, create a new desktop icon that points to **default.htm** in the **docs** folder, found in the Dynamic C installation folder.

The latest versions of all documents are always available for free, unregistered download from our web sites as well.

#### Printing Electronic Manuals

We recognize that many users prefer printed manuals for some uses. Users can easily print all or parts of those manuals provided in electronic form. The following guidelines may be helpful:

- Print from the Adobe PDF versions of the files, not the HTML versions.
- If your printer supports duplex printing, print pages double-sided.
- If you do not have a suitable printer or do not want to print the manual yourself, most retail copy shops (e.g. Kinkos, AlphaGraphics, etc.) will print the manual from the PDF file and bind it for a reasonable charge—about what we would have to charge for a printed and bound manual.



## 2. HARDWARE SETUP

This chapter describes the RCM2200 hardware in more detail, and explains how to set up and use the accompanying Prototyping Board.

**NOTE:** This chapter (and this manual) assume that you have the RCM2200 Development Kit. If you purchased an RCM2200 module by itself, you will have to adapt the information in this chapter and elsewhere to your test and development setup.

### 2.1 Development Kit Contents

The RCM2200 Development Kit contains the following items:

- RCM2200 module with Ethernet port, 256K flash memory, and 128K SRAM.
- RCM2200 Prototyping Board.
- Wall transformer power supply, 12 V DC, 500 mA. (Included only with Development Kits sold for the North American market. Overseas users will have to substitute a power supply compatible with local mains power.)
- 10-pin header to DE9 programming cable with integrated level-matching circuitry.
- *Dynamic C SE* CD-ROM, with complete product documentation on disk.
- This *Getting Started* manual.
- *Rabbit 2000 Processor Easy Reference* poster.
- Registration card.

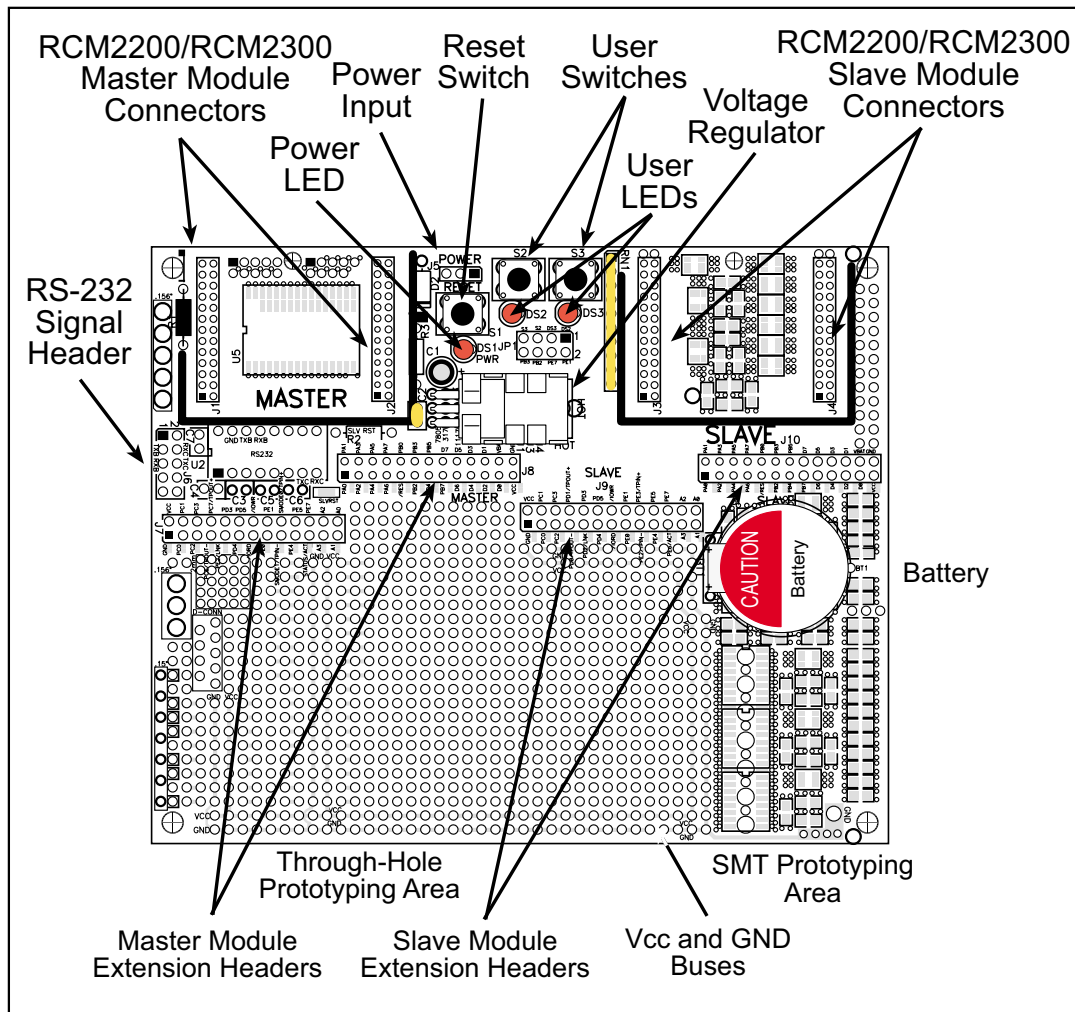
## 2.2 Prototyping Board

The Prototyping Board included in the Development Kit makes it easy to connect an RCM2200 module to a power supply and a PC workstation for development. It also provides some basic I/O peripherals (switches and LEDs), as well as a prototyping area for more advanced hardware development.

For the most basic level of evaluation and development, the Prototyping Board can be used without modification.

As you progress to more sophisticated experimentation and hardware development, modifications and additions can be made to the board without modifying or damaging the RCM2200 module itself.

The Prototyping Board is shown below in Figure 2, with its main features identified.



**Figure 2. RCM2200/RCM2300 Prototyping Board**

## 2.2.1 Prototyping Board Features

- **Power Connection**—A 3-pin header is provided for connection to the power supply. Note that it is symmetrical, with both outer pins connected to ground and the center pin connected to the raw V+ input. The cable of the wall transformer provided with the North American version of the development kit ends in a connector that is correctly connected in either orientation.

Users providing their own power supply should ensure that it delivers 8–24 V DC at not less than 500 mA. The voltage regulator will get warm while in use. (Lower supply voltages will reduce thermal dissipation from the device.)

- **Regulated Power Supply**—The raw DC voltage provided at the POWER IN jack is routed to a 5 V linear voltage regulator, which provides stable power to the RCM2200 module and the Prototyping Board. A Shottky diode protects the power supply against damage from reversed raw power connections.
- **Power LED**—The power LED lights whenever power is connected to the Prototyping Board.
- **Reset Switch**—A momentary-contact, normally open switch is connected directly to the RCM2200's **/RES** pin. Pressing the switch forces a hardware reset of the system.
- **I/O Switches and LEDs**—Two momentary-contact, normally open switches are connected to the PB2 and PB3 pins of the master RCM2200 module and may be read as inputs by sample applications.

Two LEDs are connected to the PE1 and PE7 pins of the master module, and may be driven as output indicators by sample applications.

The LEDs and switches are connected through JP1, which has traces shorting adjacent pads together. These traces may be cut to disconnect the LEDs, and an 8-pin header soldered into JP1 to permit their selective reconnection with jumpers. See Figure 3 for details.

- **Expansion Areas**—The Prototyping Board is provided with several unpopulated areas for expansion of I/O and interfacing capabilities. See the next section for details.
- **Prototyping Area**—A generous prototyping area has been provided for the installation of through-hole components. Vcc (5 V DC) and Ground buses run around the edge of this area. An area for surface-mount devices is provided to the right of the through-hole area. (Note that there are SMT device pads on both top and bottom of the Prototyping Board.) Each SMT pad is connected to a hole designed to accept a 30 AWG solid wire.
- **Slave Module Connectors**—A second set of connectors is pre-wired to permit installation of a second, slave RCM2200 or RCM2300 module. This capability is reserved for future use, although the schematics in this manual contain all of the details an experienced developer will need to implement a master-slave system.

## 2.2.2 Prototyping Board Expansion

The Prototyping Board comes with several unpopulated areas, which may be filled with components to suit the user's development needs. After you have experimented with the sample programs in Section 3.4, you may wish to expand the board's capabilities for further experimentation and development. Refer to the Prototyping Board schematic (090–0122) for details as necessary.

- **Module Extension Headers**—The complete pin sets of both the Master and Slave RabbitCore modules are duplicated at these two sets of headers. Developers can solder wires directly into the appropriate holes, or, for more flexible development, 26-pin header strips can be soldered into place. See Figure 1 for the header pinouts.
- **RS-232**—Two 2-wire or one 4-wire RS-232 serial port can be added to the Prototyping Board by installing a driver IC and four capacitors. The Maxim MAX232CPE driver chip or a similar device is recommended for the U2. Refer to the Prototyping Board schematic for additional details.

A 10-pin 0.1-inch spacing header strip can be installed at J6 to permit connection of a ribbon cable leading to a standard DE-9 serial connector.

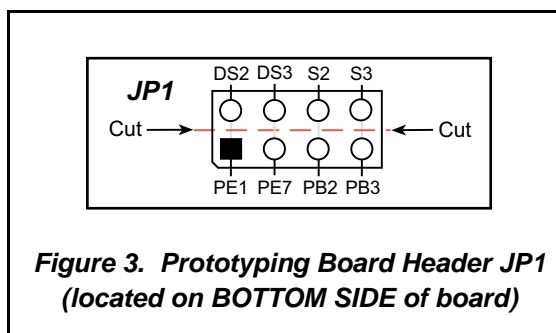
All RS-232 port components mount to the underside of the Prototyping Board, between the Master module connectors.

**NOTE:** The RS-232 chip, capacitors and header strip are available from electronics distributors such as Digi-Key.

- **Prototyping Board Component Header**—Four I/O pins from the module are hard-wired to the Prototyping Board LEDs and switches.

To disconnect these devices and permit the pins to be used for other purposes, cut the traces between the pin rows of JP1. Use a knife or similar tool to cut or break the traces crossing JP1 in the area between the silk-screened arrows, as indicated in Figure 3.

Use jumpers across the positions on JP1 if you need to reconnect any of the devices later on.



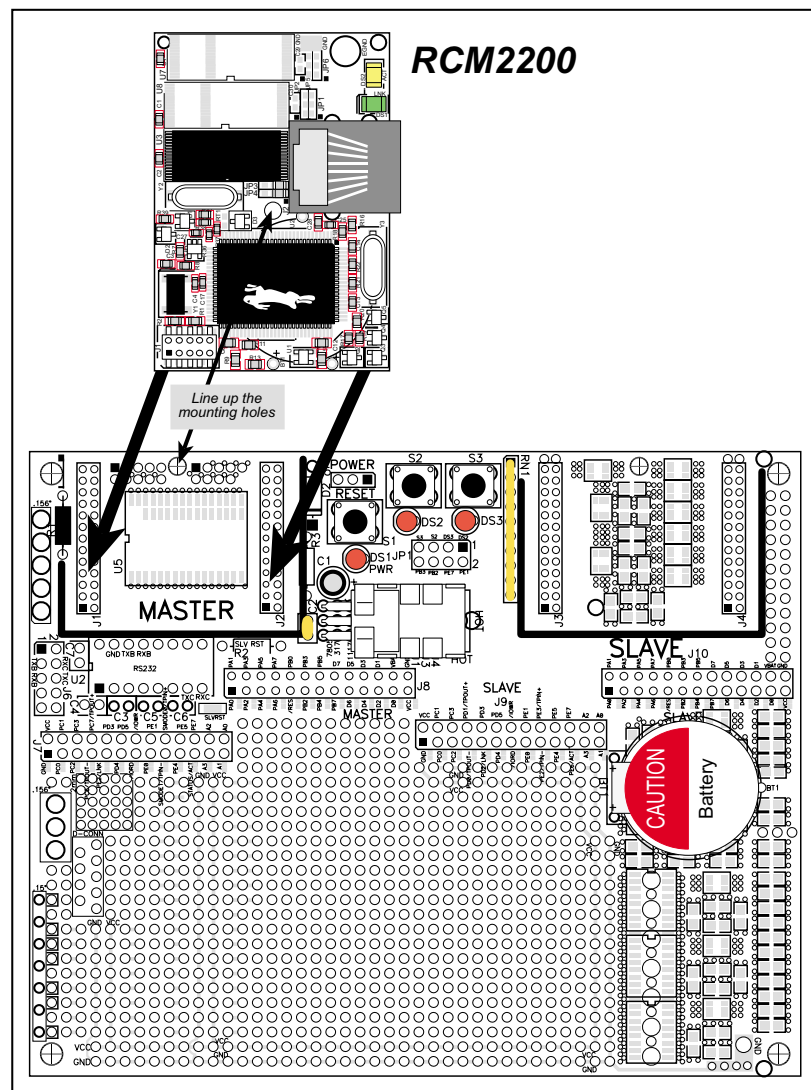
## 2.3 Development Hardware Connections

There are four steps to connecting the Prototyping Board for use with Dynamic C and the sample programs:

1. Attach the RCM2200 module to the Prototyping Board.
2. Connect the programming cable between the RCM2200 module and the workstation PC.
3. Connect the module's Ethernet port to a PC's Ethernet port, or to an Ethernet network.
4. Connect the power supply to the Prototyping Board.

### 2.3.1 Attach Module to Prototyping Board

Turn the RCM2200 module so that the Ethernet connector end of the module extends off the Prototyping Board, as shown in Figure 4 below. Align the module headers J4 and J5 into sockets J1 and J2 on the Prototyping Board.



**Figure 4. Installing the RCM2200 on the Prototyping Board**

Although you can install a single module into either the **MASTER** or the **SLAVE** position on the Prototyping Board, all the Prototyping Board features (switches, LEDs, serial port drivers, etc.) are connected to the **MASTER** position. We recommend you install a single module in the **MASTER** position.

**NOTE:** It is important that you line up the pins on headers J4 and J5 of the RCM2200 exactly with the corresponding pins of headers J1 and J2 on the Prototyping Board. The header pins may become bent or damaged if the pin alignment is offset, and the module will not work. Permanent electrical damage to the module may also result if a mis-aligned module is powered up.

Press the module's pins firmly into the Prototyping Board headers.

### 2.3.2 Connect Programming Cable

The programming cable connects the RCM2200 module to the PC running Dynamic C to download programs and to monitor the RCM2200 for debugging.

Connect the 10-pin connector of the programming cable labeled **PROG** to header J1 on the RCM2200 module as shown in Figure 5. Be sure to orient the marked (usually red) edge of the cable towards pin 1 of the connector. (Do not use the **DIAG** connector, which is used for a normal serial connection.)

Connect the other end of the programming cable to a COM port on your PC. Make a note of the port to which you connect the cable, as Dynamic C needs to have this parameter configured when it is installed.

**NOTE:** COM 1 is the default port used by Dynamic C.



**Figure 5. Connect Programming Cable to RCM2200**

### 2.3.3 Connect Ethernet Network Cable

Programming and development can be done with the RCM2200 without connecting the Ethernet port to a network. However, if you will be running the sample programs that use the Ethernet capability or will be doing Ethernet-enabled development, you should connect the RCM2200 module's Ethernet port at this time.

There are four options for connecting the RCM2200 to a network for development and runtime purposes. The first two options permit total freedom of action in selecting network addresses and use of the “network,” as no action can interfere with other users. We recommend one of these options for initial development.

- **No LAN** — The simplest alternative for desktop development. Connect the RCM2200's Ethernet port directly to the PC's network interface card using an RJ-45 *crossover cable*. A crossover cable is a special cable that flips some connections between the two connectors and permits direct connection of two client systems. A standard RJ-45 network cable will not work for this purpose.
- **Micro-LAN** — Another simple alternative for desktop development. Use a small Ethernet 10Base-T hub and connect both the PC's network interface card and the RCM2200's Ethernet port to it, using standard network cables.

The following options require more care in address selection and testing actions, as conflicts with other users, servers and systems can occur:

- **LAN** — Connect the RCM2200's Ethernet port to an existing LAN, preferably one to which the development PC is already connected. You will need to obtain IP addressing information from your network administrator.
- **WAN** — The RCM2200 is capable of direct connection to the Internet and other Wide Area Networks, but exceptional care should be used with IP address settings and all network-related programming and development. We recommend that development and debugging be done on a local network before connecting a RabbitCore system to the Internet.

**TIP:** Checking and debugging the initial setup on a micro-LAN is recommended before connecting the system to a LAN or WAN.







## 2.4 Where Do I Go From Here?

We recommend that you proceed to the next chapter and install Dynamic C (if you do not already have it installed), then run the first sample program to verify that the RCM2200 module and the Prototyping Board are set up and functioning correctly.

If everything appears to be working, we recommend the following sequence of action:

1. Run all of the sample programs described in Section 3.4 to get a basic familiarity with Dynamic C and the RCM2200 module's capabilities.
2. For further development, refer to the *RabbitCore RCM2200 User's Manual* for details of the module's hardware and software components.

A documentation icon should have been installed on your workstation's desktop; click on it to reach the documentation menu. You can create a new desktop icon that points to **default.htm** in the **docs** folder in the Dynamic C installation folder.

3. For advanced development topics, refer to the *Dynamic C User's Manual* and the *Dynamic C TCP/IP User's Manual*, also in the online documentation set.

### 2.4.1 Technical Support

**NOTE:** If you purchased your RCM2200 through a distributor or through a Z-World or Rabbit Semiconductor partner, contact the distributor or Z-World partner first for technical support.

If there are any problems at this point:

- Check the Z-World/Rabbit Semiconductor Technical Bulletin Board at [www.zworld.com/support/bb/](http://www.zworld.com/support/bb/).
- Use the Technical Support e-mail form at [www.zworld.com/support/support\\_submit.html](http://www.zworld.com/support/support_submit.html).
- Call our Technical Support center:

Z-World Technical Support, (530) 757-3737.

Rabbit Semiconductor Technical Support, (530) 757-8400.



## 3. SOFTWARE INSTALLATION & OVERVIEW

To develop and debug programs for the RCM2200 (and for all other Z-World and Rabbit Semiconductor hardware), you must install and use Dynamic C. This chapter takes you through the installation of Dynamic C, and then provides a tour of its major features with respect to the RCM2200 module.

### 3.1 An Overview of Dynamic C

Dynamic C integrates the following development functions into one program:

- Editing
- Compiling
- Linking
- Loading
- In-Circuit Debugging

In fact, compiling, linking and loading are one function. Dynamic C does not use an In-Circuit Emulator; programs being developed are downloaded to and executed from the “target” system via an enhanced serial-port connection. Program development and debugging take place seamlessly across this connection, greatly speeding system development.

Other features of Dynamic C include:

- Dynamic C has an easy-to-use built-in text editor. Programs can be executed and debugged interactively at the source-code or machine-code level. Pull-down menus and keyboard shortcuts for most commands make Dynamic C easy to use.
- Dynamic C also supports assembly language programming. It is not necessary to leave C or the development system to write assembly language code. C and assembly language may be mixed together.
- Debugging under Dynamic C includes the ability to use `printf` commands, watch expressions, breakpoints and other advanced debugging features. Watch expressions can be used to compute C expressions involving the target’s program variables or functions. Watch expressions can be evaluated while stopped at a breakpoint or while the target is running its program.

- Dynamic C provides extensions to the C language (such as shared and protected variables, costatements and cofunctions) that support real-world embedded system development. Interrupt service routines may be written in C. Dynamic C supports cooperative and preemptive multi-tasking.
- Dynamic C comes with many function libraries, all in source code. These libraries support real-time programming, machine level I/O, and provide standard string and math functions.
- Dynamic C compiles directly to memory. Functions and libraries are compiled and linked and downloaded on-the-fly. On a fast PC, Dynamic C can load 30,000 bytes of code in 5 seconds at a baud rate of 115,200 bps.

### **3.1 Hardware Requirements**

To install and run Dynamic C, your system must be running one of the following operating systems:

- Windows 95
- Windows 98
- Windows NT
- Windows Me
- Windows 2000

#### **3.1.1 Hardware Requirements**

The PC on which you install Dynamic C for development of RCM2200-based systems should have the following hardware:

- A Pentium or later microprocessor
- 32 MB of RAM
- At least 50 MB of free hard drive space
- At least one free COM (serial) port for communication with the target systems
- A 10Base-T Ethernet network interface port  
(optional if you will not be using the RCM2200's Ethernet port)
- A CD-ROM drive (for software installation)

## 3.2 Installing Dynamic C

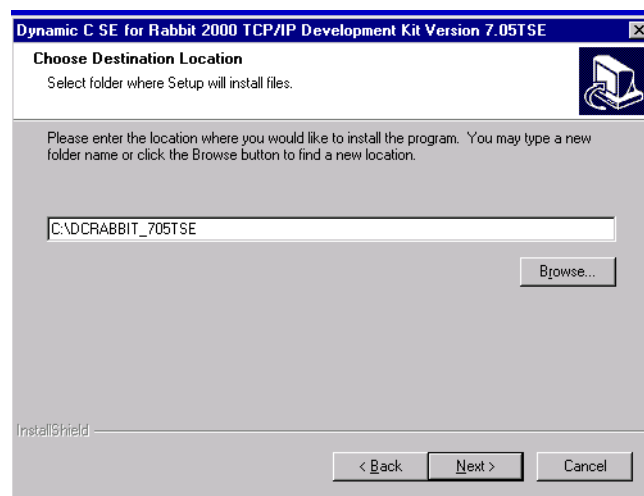
Insert the Dynamic C CD-ROM in the drive on your PC. If autorun is enabled, the CD installation will begin automatically.

If autorun is disabled or the installation otherwise does not start, use the Windows **Start | Run** menu or Windows Disk Explorer to launch **SETUP.EXE** from the root folder of the CD-ROM.

The installation program will guide you through the installation process. Most steps of the process are self-explanatory and not covered in this section. Selected steps that may be confusing to some users are outlined below. (Some of the installation utility screens may vary slightly from those shown.)

### 3.2.1 Program & Documentation File Location

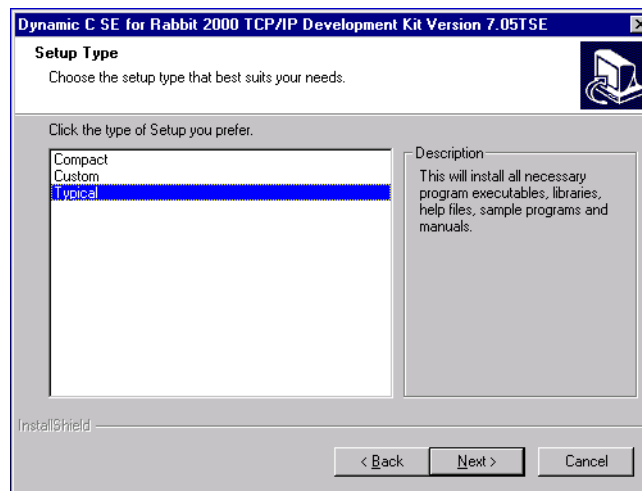
Dynamic C's application, library and documentation files can be installed in any convenient location on your workstation's hard drives.



The default location, as shown in the example above, is in a folder named for the version of Dynamic C, placed in the root folder of the C: drive. If this location is not suitable, enter a different root path before clicking **Next >**. Files are placed in the specified folder, so do not set this location to a drive's root directory.

### 3.2.2 Installation Type

Dynamic C has two components that can be installed together or separately. One component is Dynamic C itself, with the development environment, support files and libraries. The other component is the documentation library in HTML and PDF formats, which may be left uninstalled to save hard drive space or installed elsewhere (on a separate or network drive, for example).

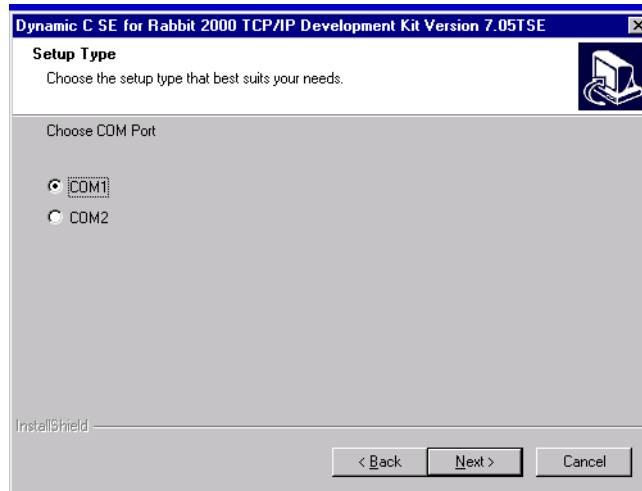


The installation type is selected in the installation menu shown above. The options are:

- **Typical Installation** — Both Dynamic C and the documentation library will be installed in the specified folder (default).
- **Compact Installation** — Only Dynamic C will be installed.
- **Custom Installation** — You will be allowed to choose which components are installed. This choice is useful to install or reinstall just the documentation.

### 3.2.3 Select COM Port

Dynamic C uses a COM (serial) port to communicate with the target development system. The installation allows you to choose the COM port that will be used.

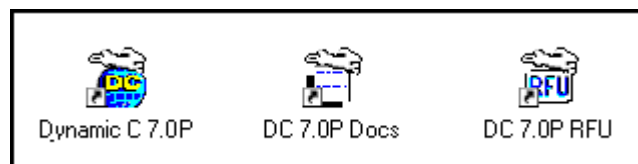


The default selection, as shown in the example above, is COM1. You may select any available port for Dynamic C's use. If you are not certain which port is available, select COM1. This selection can be changed later within Dynamic C.

**NOTE:** The installation utility does not check the selected COM port in any way. Specifying a port in use by another device (mouse, modem, etc.) may cause temporary problems when Dynamic C is started.

### 3.2.4 Desktop Icons

Once your installation is complete, you will have up to three icons on your PC desktop, as shown below.



One icon is for Dynamic C, one opens the documentation menu, and the third is for the Rabbit Field Utility, a tool used to download precompiled software to a target system.

### 3.3 Starting Dynamic C

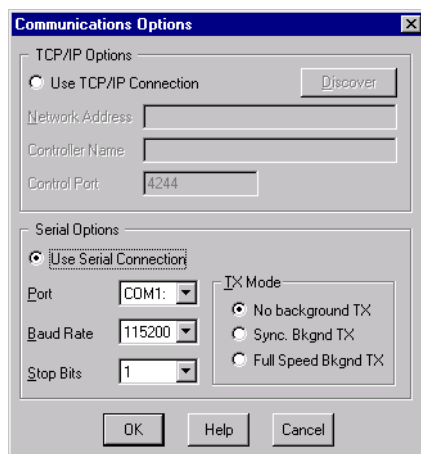
Once the RCM2200 module is set up and connected as described in Chapter 2 and Dynamic C has been installed, start Dynamic C by double-clicking on the Dynamic C icon. Dynamic C should start, then look for the target system on the COM port you specified during installation (by default, COM1). Once detected, Dynamic C should go through a sequence of steps to cold-boot the module and compile the BIOS.

If you receive the message beginning **"BIOS successfully compiled and loaded..."** you are ready to continue with the sample programs.

#### 3.3.1 Communication Error Messages

If you receive the message **"No Rabbit Processor Detected,"** the programming cable may be connected to a different COM port, a connection may be faulty, or the target system may not be powered up. First, check to see that the power LED on the prototyping board is lit. If it is, check both ends of the programming cable to ensure that it is firmly plugged into the PC and the RCM2200's programming port. If you are using the Prototyping Board, ensure that the module is firmly and correctly installed in its connectors.

If there are no faults with the hardware, select a different COM port within Dynamic C. From the Options menu, select Communications. The dialog shown should appear.



Select another COM port from the list, then click OK. Press **<Ctrl-Y>** to force Dynamic C to recompile the BIOS. If Dynamic C still reports it is unable to locate the target system, repeat the above steps until you locate the active COM port.

If Dynamic C appears to compile the BIOS successfully, but you then receive a communication error message, it is possible that your PC cannot handle the 115,200 bps baud rate. Try changing the baud rate to 57,600 bps as follows.

- Locate the **Serial Options** dialog in the Dynamic C **Options > Communications** menu. Change the baud rate to 57,600 bps.



## 3.4 Sample Programs

To help familiarize you with the RCM2200 modules, Dynamic C includes several sample programs. Loading, executing and studying these programs will give you a solid hands-on overview of the RabbitCore's capabilities, as well as a quick start with Dynamic C as an application development tool.

**NOTE:** The sample programs assume that you have at least an elementary grasp of ANSI C. If you do not, see the introductory pages of the *Dynamic C Premier User's Manual* for a suggested reading list.

Of the many sample programs included with Dynamic C, several are specific to the RCM2200 module. These programs will be found in the **Samples/RCM2200** folder.

We suggest that you examine the following five of these sample programs in order to get a complete tour of the capabilities of the RCM2200 modules. They form a “learning arc” from basic I/O control to advanced TCP/IP issues, including Web serving:

- **FlashLED.c**
- **ToggleLED.c**
- **FlashLEDs.c**
- **PingLED.c**
- **EthCore1.c**

Each of these programs is fully commented within the source code. Refer to these comments for the details of how each program works.

Once you have loaded and executed these five programs and have an understanding of how Dynamic C and the RCM2200 modules interact, you can move on and try the other sample programs, or begin building your own.



## 4. USING THE TCP/IP FEATURES

### 4.1 TCP/IP Connections

Before proceeding you will need to have the following items.

- If you don't have Ethernet access, you will need at least a 10Base-T Ethernet card (available from your favorite computer supplier) installed in a PC.
- Two RJ-45 straight through Ethernet cables and a hub, or an RJ-45 crossover Ethernet cable.

The Ethernet cables and Ethernet hub are available from Z-World in a TCP/IP tool kit. More information is available at [www.zworld.com](http://www.zworld.com).

1. Connect the AC adapter and the programming cable as shown in Chapter 2, "Hardware Setup."

2. Ethernet Connections

If you do not have access to an Ethernet network, use a crossover Ethernet cable to connect the RCM2200 board to a PC with at least a 10Base-T Ethernet card.

If you have Ethernet access, use a straight Ethernet cable to establish an Ethernet connection to the RCM2200 from an Ethernet hub.

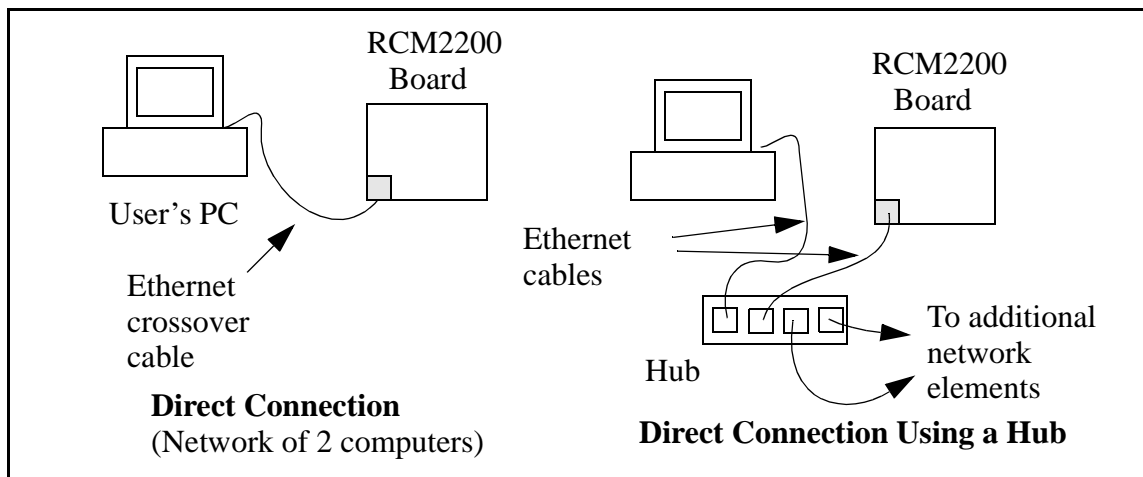
The PC running Dynamic C through the serial port on the RCM2200 does not need to be the PC with the Ethernet card.

3. Apply Power

Plug in the AC adapter. The RCM2200 is now ready to be used.

## 4.2 Running TCP/IP Sample Programs

We have provided a number of sample programs demonstrating various uses of TCP/IP for networking embedded systems. These programs require that the user connect his PC and the RCM2200 board together on the same network. This network can be a local private network (preferred for initial experimentation and debugging), or a connection via the Internet.



Obtaining IP addresses to interact over an existing, operating, network can involve a number of complications, and must usually be done with cooperation from your ISP and/or network systems administrator (if your company has one). For this reason, it is suggested that the user begin instead by using a direct connection between a PC and the RCM2200 board using an Ethernet crossover cable or a simple arrangement with a hub. (A crossover cable should not be confused with regular straight through cables.) The hub and a wide variety of cables can also be purchased from a local computer store.

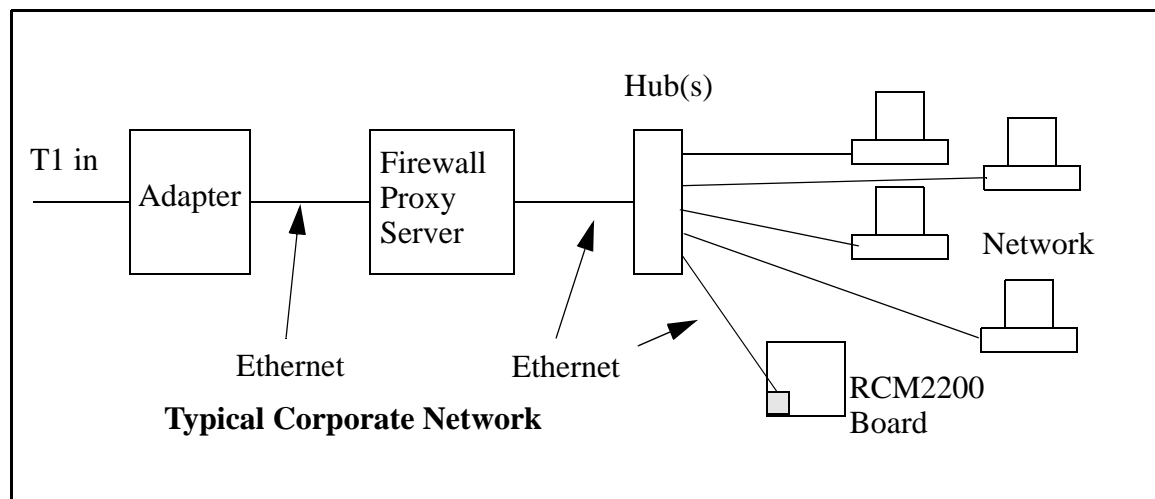
In order to set up this direct connection, the user will have to use a virgin PC (right out of the box), or disconnect a PC from the corporate network, or as yet another approach install a second Ethernet adapter and set up a separate private network attached to the second Ethernet adapter. Disconnecting your PC from the corporate network may be easy or nearly impossible, depending on how it is set up. Mobile PCs, such as laptops, are designed to be connected and disconnected, and will present the least problem. If your PC boots from the network or is dependent on the network for some or all of its disks, then it probably should not be disconnected. If a second Ethernet adapter is used, be aware that Windows TCP/IP will send messages to one adapter or the other, depending on the IP address and the binding order in Microsoft products. Thus you should have different ranges of IP addresses on your private network from those used on the corporate network. If both networks service the same IP address, then Windows may send a packet intended for your private network to the corporate network. A similar situation will take place if you use a dial-up line to send a packet to the Internet. Windows may try to send it via the local Ethernet network if it is also valid for that network.

The following IP addresses are set aside for local networks and are not allowed on the Internet: 10.0.0.0 to 10.255.255.255, 172.16.0.0 to 172.31.255.255, and 192.168.0.0 to 192.168.255.255.

The RCM2200 board uses a 10Base-T type of Ethernet connection, which is the most common scheme. The RJ-45 connectors are similar to U.S. style telephone connectors, are except larger and have 8 contacts.

An alternative to the direct connection using a crossover cable is a direct connection using a hub. The hub relays packets received on any port to all of the ports on the hub. Hubs are low in cost and are readily available. The RCM2200 board uses 10 Mbps Ethernet, so the hub or Ethernet adapter must be either a 10 Mbps unit or a 10/100 unit that adapts to either 10 or 100 Mbps.

In a corporate setting where the Internet is brought in via a high-speed line, there are typically machines between the outside Internet and the internal network. These machines include a combination of proxy servers and firewalls that filter and multiplex Internet traffic. In the configuration below, the RCM2200 board could be given a fixed address so any of the computers on the local network would be able to contact it. It may be possible to configure the firewall or proxy server to allow hosts on the Internet to directly contact the controller, but it would probably be easier to place the controller directly on the external network outside of the firewall. This avoids some of the configuration complications by sacrificing some security.



If your system administrator can give you an Ethernet cable along with its IP address, the netmask and the gateway address, then you may be able to run the sample programs without having to setup a direct connection between your computer and the RCM2200 board. You will also need the IP address of the nameserver, the name or IP address of your mail server, and your domain name for some of the sample programs.

### 4.3 IP Addresses Explained

IP (Internet Protocol) addresses are expressed as 4 decimal numbers separated by periods, for example:

216.103.126.155

10.1.1.6

Each decimal number must be between 0 and 255. The total IP address is a 32-bit number consisting of the 4 bytes expressed as shown above. A local network uses a group of adjacent IP addresses. There are always  $2^N$  IP addresses in a local network. The netmask (also called subnet mask) determines how many IP addresses belong to the local network. The netmask is also a 32-bit address expressed in the same form as the IP address. An example netmask is:

255.255.255.0

This netmask has 8 zero bits in the least significant portion, and this means that  $2^8$  addresses are a part of the local network. Applied to the IP address above (216.103.126.155), this netmask would indicate that the following IP addresses belong to the local network:

216.103.126.0

216.103.126.1

216.103.126.2

etc.

216.103.126.254

216.103.126.255

The lowest and highest address are reserved for special purposes. The lowest address (216.102.126.0) is used to identify the local network. The highest address (216.102.126.255) is used as a broadcast address. Usually one other address is used for the address of the gateway out of the network. This leaves  $256 - 3 = 253$  available IP addresses for the example given.

## 4.4 How IP Addresses are Used

The actual hardware connection via an Ethernet uses Ethernet adapter addresses (also called MAC addresses.) These are 48-bit addresses and are unique for every Ethernet adapter manufactured. In order to send a packet to another computer, given the IP address of the other computer, it is first determined if the packet needs to be sent directly to the other computer or to the gateway. In either case, there is an IP address on the local network to which the packet must be sent. A table is maintained to allow the protocol driver to determine the MAC address corresponding to a particular IP address. If the table is empty, the MAC address is determined by sending an Ethernet broadcast packet to all devices on the local network asking the device with the desired IP address to answer with its MAC address. In this way, the table entry can be filled in. If no device answers, then the device is nonexistent or inoperative, and the packet cannot be sent.

IP addresses are arbitrary and can be allocated as desired provided that they don't conflict with other IP addresses. However, if they are to be used with the Internet, then they must be numbers that are assigned to your connection by proper authorities, generally by delegation via your service provider.

## 4.5 Dynamically Assigned Internet Addresses

In many instances, there are no fixed IP addresses. This is the case when, for example, you are assigned an IP address dynamically by your dial-up Internet service provider (ISP) or when you have a device that provides your IP addresses using the Dynamic Host Configuration Protocol (DHCP). The Intellicom can use such IP addresses to send and receive packets on the Internet, but you must take into account that this IP address may only be valid for the duration of the call or for a period of time, and could be a private IP address that is not directly accessible to others on the Internet. These private address can be used to perform some Internet tasks such as sending e-mail or browsing the Web, but usually cannot be used to participate in conversations that originate elsewhere on the Internet. If you want to find out this dynamically assigned IP address, under Windows 98 you can run the **winipcfg** program while you are connected and look at the interface used to connect to the Internet.

Many networks use private IP addresses that are assigned using DHCP. When your computer comes up, and periodically after that, it requests its networking information from a DHCP server. The DHCP server may try to give you the same address each time, but a fixed IP address is usually not guaranteed.

If you are not concerned about accessing the RCM2200 from the Internet, you can place the RCM2200 on the internal network using a private address assigned either statically or through DHCP.



## 4.6 Placing Your Device on the Internet

In many corporate settings, users are isolated from the Internet by a firewall and/or a proxy server. These devices attempt to secure the company from unauthorized network traffic, and usually work by disallowing traffic that did not originate from inside the network. If you want users on the Internet to communicate with your RCM2200, you have several options. You can either place the RCM2200 directly on the Internet with a real Internet address or place it behind the firewall. If you place the RCM2200 behind the firewall, you need to configure the firewall to translate and forward packets from the Internet to the RCM2200.

## 4.7 How to Set IP Addresses in the Sample Programs

Most of the sample programs such as shown in the example below use macros to define the IP address assigned to the board and the IP address of the gateway, if there is a gateway.

```
#define MY_IP_ADDRESS "216.112.116.155"
#define MY_NETMASK "255.255.255.248"
#define MY_GATEWAY "216.112.116.153"
```

In order to do a direct connection, the following IP addresses can be used for the RCM2200:

```
#define MY_IP_ADDRESS "10.1.1.2"
#define MY_NETMASK "255.255.255.248"
// #define MY_GATEWAY "216.112.116.153"
```

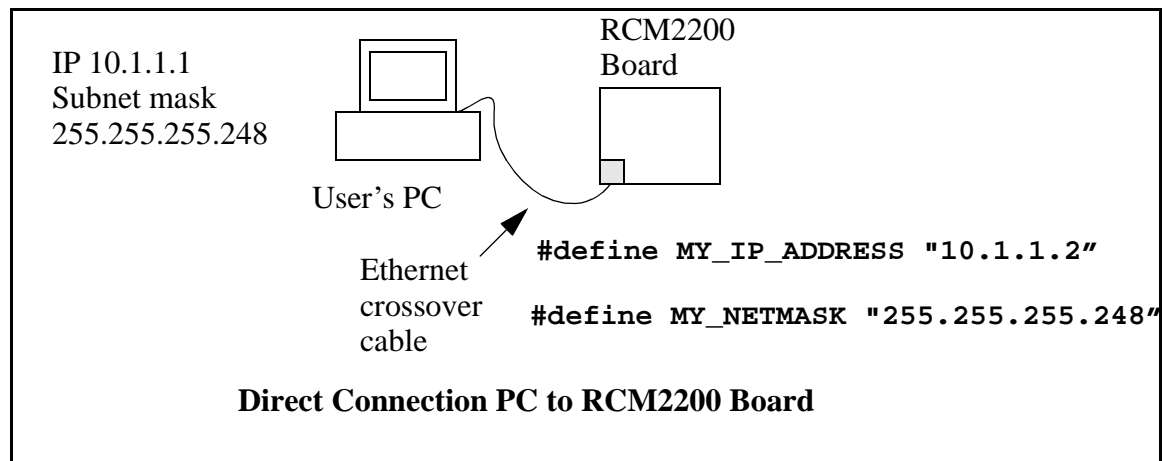
In this case, the gateway is not used and is commented out. The IP address of the board is defined to be 10.1.1.2. The IP address of you PC can be defined as 10.1.1.1.

## 4.8 How to Set Up your Computer's IP Address for Direct Connect

When your computer is connected directly to the RCM2200 board via an Ethernet connection, you need to assign an IP address to your computer. To assign the PC the address 10.1.1.1 with the subnetmask 255.255.255.248 under Windows 98, do the following.

Click on **Start > Settings > Control Panel** to bring up the Control Panel, and then double-click the Network icon. In the window find the line of the form **TCP/IP > Ethernet adapter name**. Double-click on this line to bring up the TCP/IP properties dialog box. You can edit the IP address directly and the subnet mask. (Disable "obtain an IP address automatically.") You may want to write down the existing values in case you have to restore them later. It is not necessary to edit the gateway address since the gateway is not used with direct connect.

The method of setting the IP address may differ for different versions of Windows, such as 95, NT, or 2000.



## 4.9 Run the PINGME.C Demo

In order to run this program, edit the IP address and netmask in the **PINGME.C** program (**SAMPLES\TCPIP\ICMP**) to the values given above (10.1.1.2 and 255.255.255.248). Compile the program and start it running under Dynamic C. The crossover cable is connected from your computer's Ethernet adapter to the RCM2200 board's RJ-45 Ethernet connector. When the program starts running, the green **LNK** light on the RCM2200 board should be on to indicate an Ethernet connection is made. (Note: If the **LNK** light does not light, you may not have a crossover cable, or if you are using a hub perhaps the power is off on the hub.)

The next step is to ping the board from your PC. This can be done by bringing up the MS-DOS window and running the pingme program:

```
ping 10.1.1.2
```

or by **Start > Run**

and typing the entry

```
ping 10.1.1.2
```

Notice that the red **ACT** light flashes on the RCM2200 board while the ping is taking place, and indicates the transfer of data. The ping routine will ping the board four times and write a summary message on the screen describing the operation.

## 4.10 Running More Demo Programs With Direct Connect

The program **STATIC.C** (**SAMPLES\TCPIP\HTTP**) demonstrates how to make the RCM2200 board be a Web server. In order to run these sample programs, edit the IP address as for the pingme program, compile the program and start it executing. Then bring up your Web browser and enter the following server address: `http://10.1.1.2`.

This should bring up the Web page served by the sample program.

The sample program **RXSAMPLE.C** (**SAMPLES\TELNET**) allows you to communicate with the RCM2200 board using the Telnet protocol. To run this program, edit the IP address, compile the program, and start it running. Run the Telnet program on your PC (**Start > Run telnet 10.1.1.2**). Each character you type will be printed in Dynamic C's **STDIO** window, indicating that the board is receiving the characters typed via TCP/IP.

## 4.11 Where Do I Go From Here?

**NOTE:** If you purchased your RCM2200 through a distributor or through a Z-World or Rabbit Semiconductor partner, contact the distributor or Z-World partner first for technical support.

If there are any problems at this point:

- Check the Z-World/Rabbit Semiconductor Technical Bulletin Board at [www.zworld.com/support/bb/](http://www.zworld.com/support/bb/).
- Use the Technical Support e-mail form at [www.zworld.com/support/support\\_submit.html](http://www.zworld.com/support/support_submit.html).
- Call our Technical Support center:

Z-World Technical Support, (530) 757-3737.

Rabbit Semiconductor Technical Support, (530) 757-8400.

If the sample programs ran fine, you are now ready to go on.

Additional sample programs are described in the *Dynamic C TCP/IP User's Manual*.

Please refer to the *Dynamic C TCP/IP User's Manual* to develop your own applications. *An Introduction to TCP/IP* provides background information on TCP/IP, and is available on the CD and on [Z-World's Web site](#).



# INDEX

## A

additional information  
     online documentation ..... 4  
     references ..... 3

## C

C language ..... 15, 16

## D

Development Kit ..... 5  
 Dynamic C ..... 3, 15, 16  
     assembly language ..... 15  
     debugger ..... 15  
     debugging ..... 15  
     desktop icons ..... 19  
     editor ..... 15  
     features ..... 15  
     handling communication error  
         messages ..... 20  
     hardware requirements ..... 16  
     installing ..... 17, 18, 19  
     interrupt service routines .. 16  
     sample programs ..... 21  
     starting ..... 20  
     watch expressions ..... 15

## E

Ethernet cables ..... 11, 23  
 Ethernet connections . 11, 23, 25  
     10Base-T ..... 25  
     10Base-T Ethernet card .... 23  
     additional resources ..... 33  
     Ethernet cables ..... 25  
     Ethernet hub ..... 23  
     IP addresses ..... 24, 26  
     steps ..... 23

## F

features  
     Prototyping Board ..... 6, 7  
     RCM2200 ..... 1

## H

hardware connections ..... 9  
     Ethernet ..... 11  
     install RCM2200 on Prototyp-  
         ing Board ..... 9  
     power supply ..... 12  
     programming cable ..... 10  
 hardware reset ..... 12

## I

IP addresses ..... 26, 31  
     how to set ..... 30  
     how to set PC IP address ... 31

## J

JP1  
     Prototyping Board ..... 8

## M

models  
     factory versions ..... 1

## P

pinout  
     RCM2200 ..... 2  
 power supply  
     connections ..... 12  
 programming cable  
     RCM2200 connections ..... 10

Prototyping Board ..... 6  
     expansion area ..... 8  
     features ..... 6, 7  
     optional header JP1 ..... 8  
     ounting RCM2200 ..... 9

## R

RCM2200  
     mounting on Prototyping  
         Board ..... 9  
 reset ..... 12  
 running TCP/IP sample pro-  
     grams ..... 24

## S

sample programs ..... 21  
     how to set IP address ..... 30  
     PINGME.C ..... 32  
     running TCP/IP sample pro-  
         grams ..... 24  
     RXSAMPLE.C ..... 32  
     STATIC.C ..... 32  
     TCP/IP ..... 24  
 software  
     sample programs ..... 21  
         ETHCORE1.C ..... 21  
         FLASHLED.C ..... 21  
         FLASHLEDS.C ..... 21  
         PINGLED.C ..... 21  
         TOGGLELED.C ..... 21

specifications  
     physical and electrical ..... 2

## T

technical support ..... 13





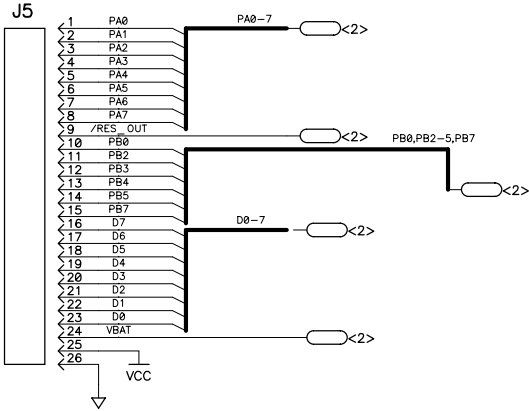
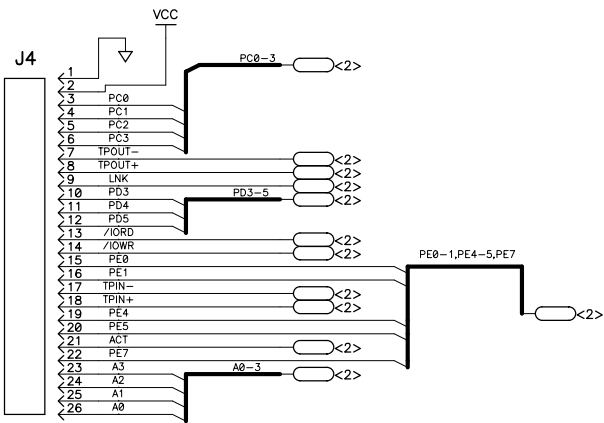


# **SCHEMATICS**

**090-0120 RCM2200 Schematic**

**090-0122 RCM2200 Prototyping Board Schematic**

**090-0128 Programming Cable Schematic**



STUFFING TABLE

	CIRCUIT	PART	RCM2200	RCM2210	RCM2250
POWER TO VRAM SWITCH	WITH BATTERY BACKUP CIRCUITRY	R33	NOT INSTALLED	NOT INSTALLED	NOT INSTALLED
CS CONTROL SWITCH	WITH BATTERY BACKUP CIRCUITRY	R27	NOT INSTALLED	NOT INSTALLED	NOT INSTALLED
SRAM	MAIN	U5	128K SRAM	128K SRAM	512K SRAM
	SRAM SELECT	JP7	ZERO OHM ACROSS PINS 1-2	ZERO OHM ACROSS PINS 1-2	ZERO OHM ACROSS PINS 2-3
FLASH	FIRST	U3	256K FLASH	256K FLASH	256K FLASH
	FLASH MEMORY BANK SELECT	JP3	ZERO ohm ACROSS PINS 1-2	ZERO ohm ACROSS PINS 1-2	ZERO ohm ACROSS PINS 1-2
	FLASH TYPE	JP4	ZERO ohm ACROSS PINS 1-2	ZERO ohm ACROSS PINS 1-2	ZERO ohm ACROSS PINS 1-2
	CAPACITOR	C10	INSTALLED	INSTALLED	INSTALLED
	SECOND	U8	NOT INSTALLED	NOT INSTALLED	256K FLASH
	FLASH MEMORY BANK SELECT	JP2	NOT INSTALLED	NOT INSTALLED	ZERO ohm ACROSS PINS 1-2
	FLASH TYPE	JP1	NOT INSTALLED	NOT INSTALLED	ZERO ohm ACROSS PINS 1-2
	CAPACITOR	C30	NOT INSTALLED	NOT INSTALLED	INSTALLED
	THIRD	U7	NOT INSTALLED	NOT INSTALLED	NOT INSTALLED
	FLASH MEMORY BANK SELECT	JP5	NOT INSTALLED	NOT INSTALLED	NOT INSTALLED
	FLASH TYPE	JP6	NOT INSTALLED	NOT INSTALLED	NOT INSTALLED
	CAPACITOR	C29	NOT INSTALLED	NOT INSTALLED	NOT INSTALLED
ETHERNET	RJ-45 CONNECTOR WITH BUILT IN MAGNETICS	J2	INSTALLED	NOT INSTALLED	INSTALLED
	FILTER CAPACITORS	C18	INSTALLED	NOT INSTALLED	INSTALLED
		C19	INSTALLED	NOT INSTALLED	INSTALLED
		C23	INSTALLED	NOT INSTALLED	INSTALLED
		C24	INSTALLED	NOT INSTALLED	INSTALLED
	LEDS	DS1	INSTALLED	NOT INSTALLED	INSTALLED
		DS2	INSTALLED	NOT INSTALLED	INSTALLED
		R34	INSTALLED	NOT INSTALLED	INSTALLED
BATTERY	ON BOARD BATTERY	BT1	NOT INSTALLED	NOT INSTALLED	NOT INSTALLED

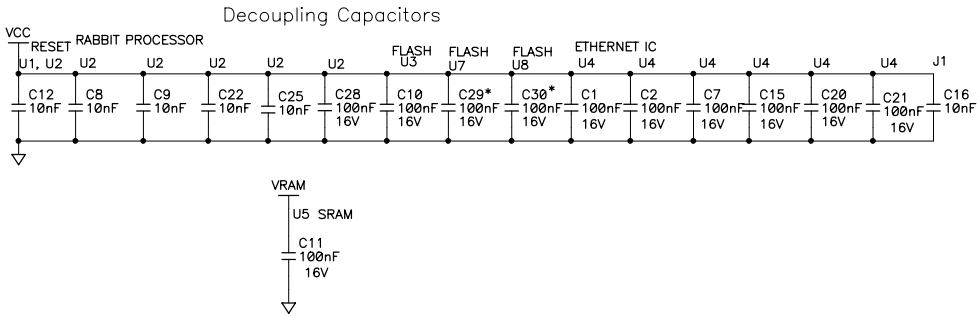
REVISION HISTORY

REV	ECO	DESCRIPTION OF CHANGE	PROJECT ENGINEER	APPROVAL DATE	DOCUMENT CONTROL	APPROVAL DATE
A	E11399	INITIAL RELEASE	RJH	3/22/01	KIS	3/22/01
B	E11646	ADD CAP TO THE LEFT OF R17 (PAGE 2). ADD REFERENCE TO NEW RCM2210.	RJH	9/21/01	KIS	8/29/01
C	E11570	REMOVED R12, ADDED R42,R43	RJH	9/24/01	KIS	9/21/01
D	E11787	CORRECT STUFFING TABLE SPEC FOR RCM2210 AT U5.				

REVISION APPROVAL

TABLE A


REF DES	DEVICE	DEVICE VOLTAGE INFORMATION			DEVICE: FILTER CAP REF DES(s)
		GND	VCC	VRAM	
U1	ETC811L	1	4		C12
U2	RABBIT 2000	2,27,39 52,77,89	3,28,53, 78,92		C8,C9,C12,C22,C25,C28
U3	FLASH	24	8		C10
U8	FLASH	24	8		C30
U7	FLASH	24	8		C29
U4	RTL8019AS	14,28,44 52,83,86	6,17,47 57,70,89		C1,C2,C7,C15,C20,C21
U5	SRAM 128K X 8	16		32	C11

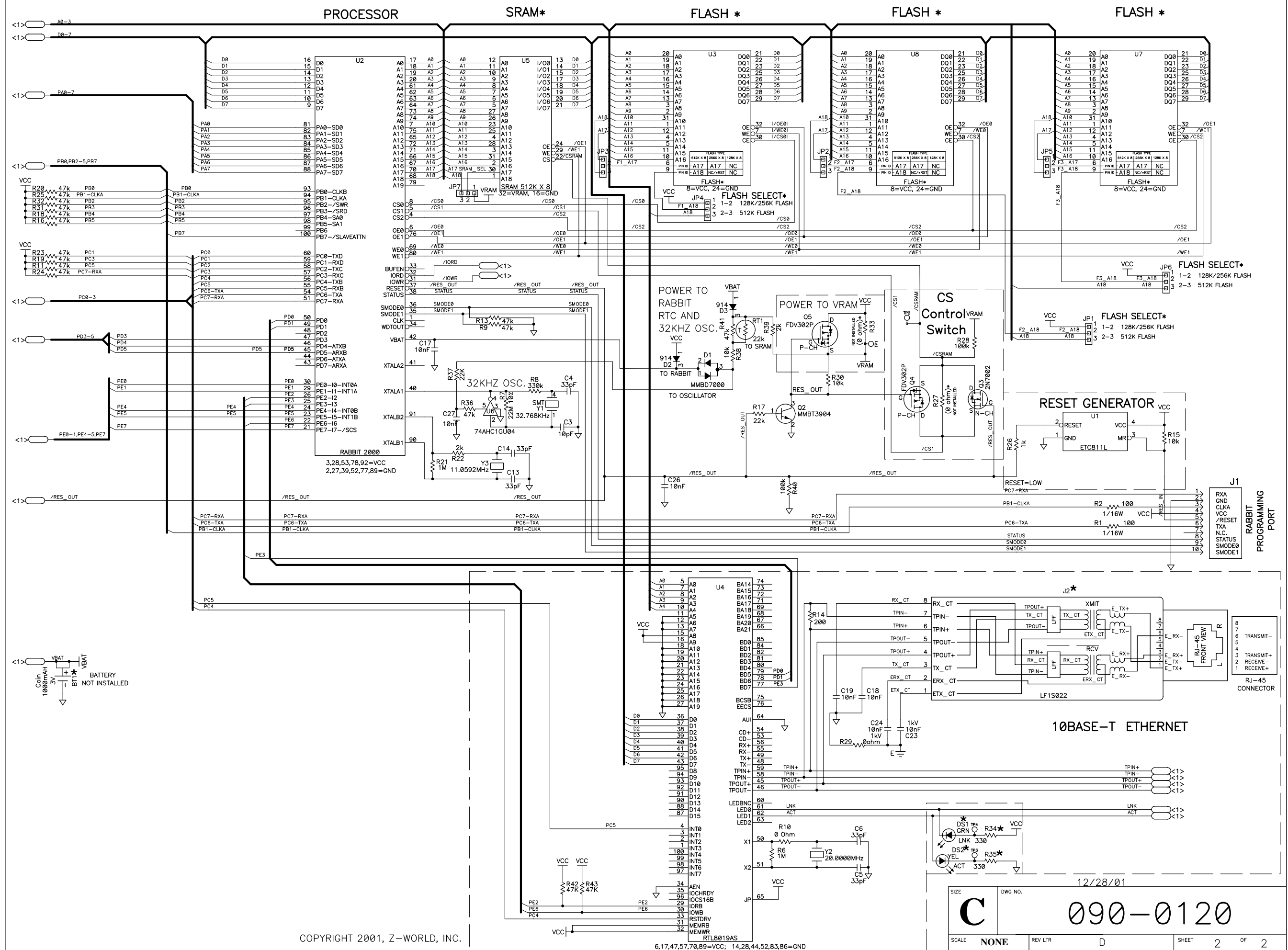


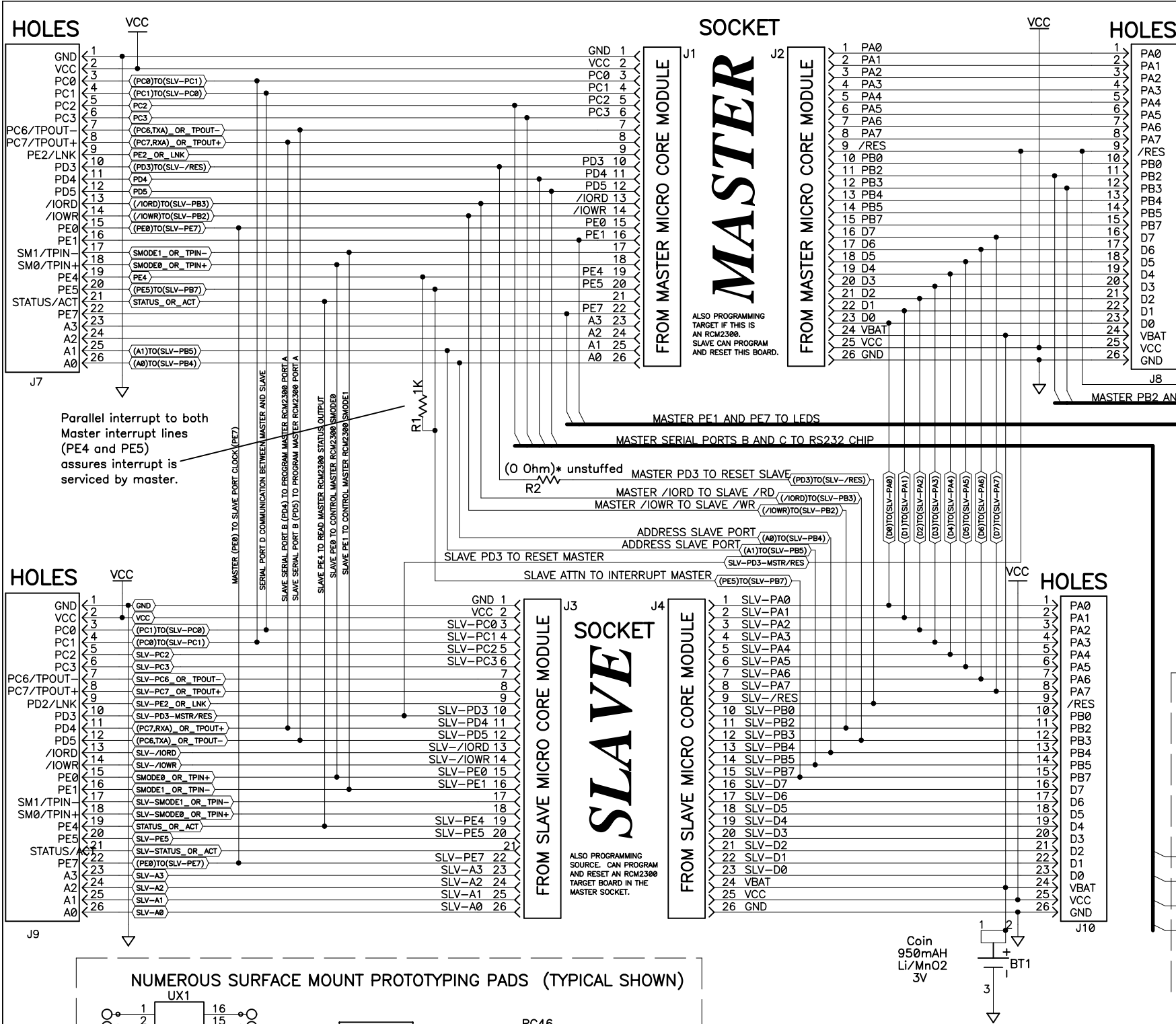
- NOTES: UNLESS OTHERWISE SPECIFIED;
- ALL RESISTOR VALUES ARE IN OHMS, 1/16W, 5%
  - ALL CAPACITORS ARE 50VDC OR HIGHER.
  - THE ORIGATION SOURCE OF A VOLTAGE IS REPRESENTED BY (  $V_{CC}$  ), AND ALL REFERENCES TO THAT VOLTAGE ARE REPRESENTED BY (  $V_{CC}$  ).
  - R27, R33, & BT1 NOT NORMALLY STUFFED.
  - COMPONENT VALUES SHOWN WITH AN ASTERISK (\*) FOLLOWING THE VALUE, MAY HAVE DIFFERENT VALUES, OR MAY NOT BE STUFFED DEPENDING ON MODEL. SEE STUFFING CHART FOR CLARIFICATION.

Copyright 2001, Z-World, Inc.

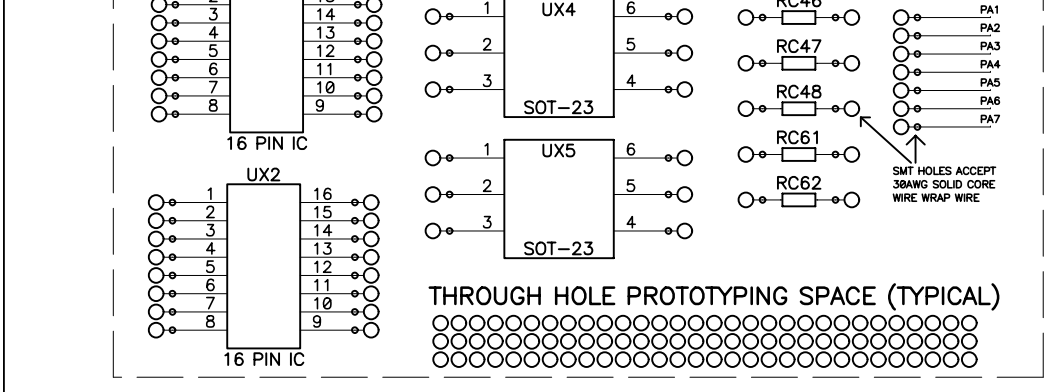
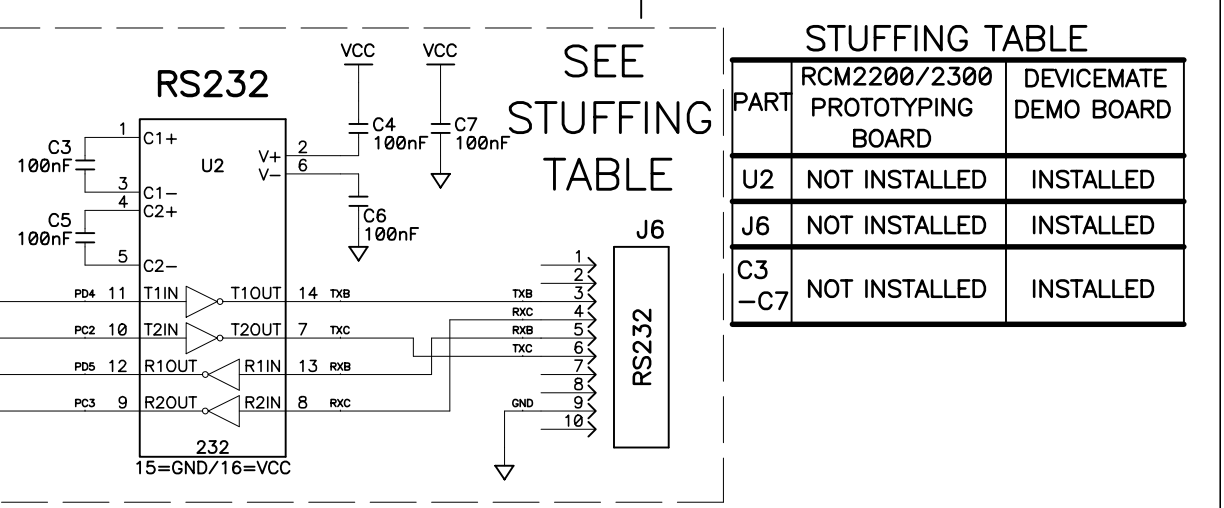
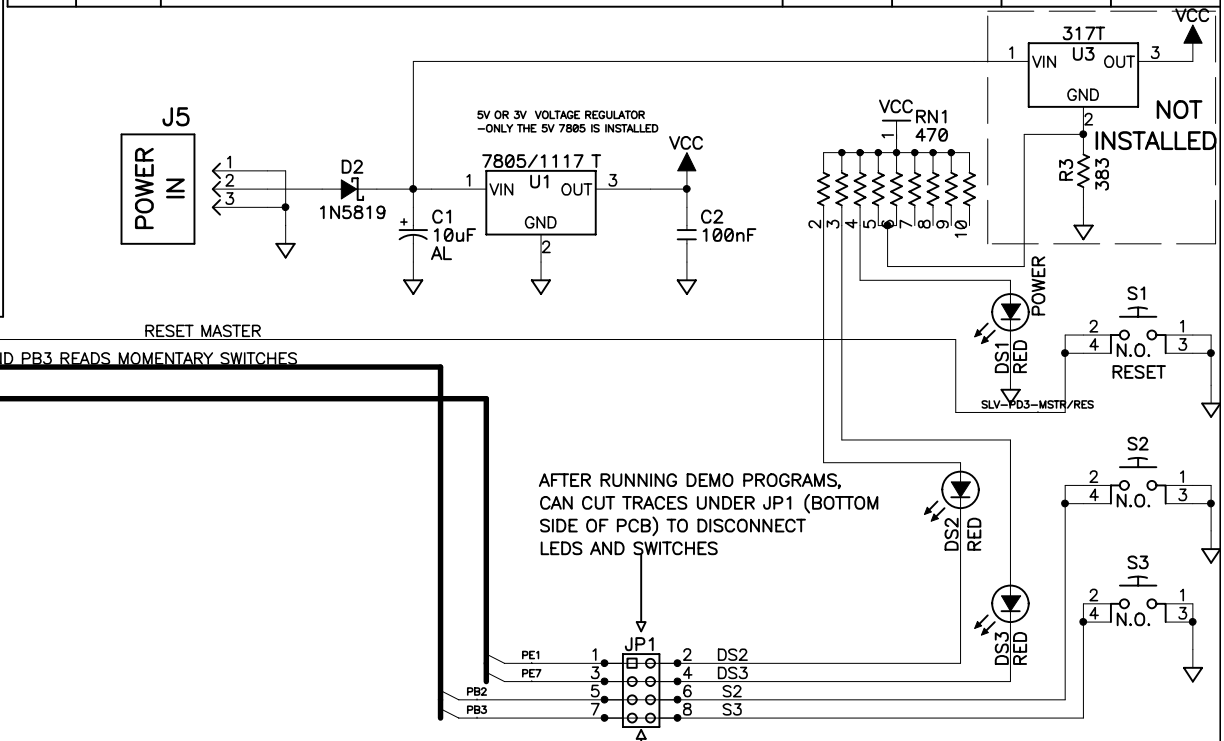
12/28/01

APPEND THE FOLLOWING DOCUMENTS WHEN CHANGING THIS DOCUMENT:		DRAWING CONTENT:		TITLE SCHEMATIC DIAGRAM MICRO ETHERNET RABBITCORES RCM2200 SERIES		 2900 SPAFFORD ST. DAVIS, CA 95616 530 - 757-4616		
		DRAWN BY: (INITIAL RELEASE)						
	RJH	3/15/01						
	REVISED BY: K.SCHALLER	12/28/01						
	APPROVALS: INITIAL RELEASE							
	PROJECT ENGINEER: RICHARD HESS	3/22/01	SIZE C	DWG NO.  090-0120	SHEET 1 OF 2			
	ENGINEERING MANAGER: R.MATTHEWS	3/22/01						
	SIGNATURES		DATE		SCALE NONE		RELEASE DATE	





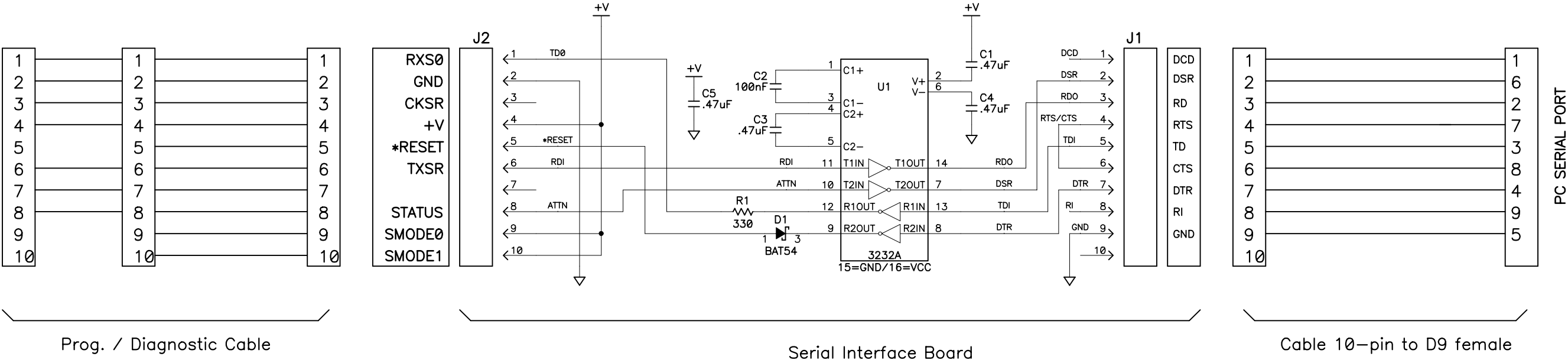
REVISION HISTORY				REVISION APPROVAL			
REV	ECO	DESCRIPTION		PROJECT ENGINEER	APPROVAL DATE	DOCUMENT CONTROL	APPROVAL DATE
B	E11520	ADD RCM2300 CONNECTIONS		RJH	04/11/01	KIS	05/10/01
C	E11669	MAKE PROVISION FOR NEW DEMO BOARD		RJH	9/18/01	KIS	9/17/01
D	E11724	ADD 'DEVICEMATE' NAME TO NEW DEMO BOARD REFERENCES					




APPEND THE FOLLOWING DOCUMENTS WHEN CHANGING THIS DOCUMENT:		DRAWING CONTENT:		TITLE	
		DRAWN BY: (INITIAL RELEASE)	22MAR01	SCHEMATIC DIAGRAM	
		REVISED BY:	11/08/01	RCM2200/2300 PROTOTYPING BOARD	
		APPROVALS: INITIAL RELEASE		DEVICEMATE DEMO BOARD	
		PROJECT ENGINEER:	04/09/01	SIZE	DWG NO.
		ENGINEERING MANAGER:	04-09-01		
		SIGNATURES	DATE	SCALE	NONE
				RELEASE DATE	
				SHEET	1 OF 1



REVISION HISTORY			REVISION APPROVAL			
REV	ECO	DESCRIPTION	PROJECT ENGINEER	APPROVAL DATE	DOCUMENT CONTROL	APPROVAL DATE
A	E11523	INITIAL RELEASE OF SCHEMATIC	EP	5/14/01	KIS	5/14/01
B	E11691	CORRECT DE9 PINOUT	EP	10/5/01	KIS	10/4/01
C	E11816	ADD 3.3V CAPABILITY AND RED TUBING				



NOTES: UNLESS OTHERWISE SPECIFIED;  
1. ALL RESISTOR VALUES ARE IN OHMS, 1/10W, 5%  
2. ALL CAPACITORS ARE 50VDC OR HIGHER.  
3. THE ORIGATION SOURCE OF A VOLTAGE IS REPRESENTED BY (VCC), AND ALL REFERENCES TO THAT VOLTAGE ARE REPRESENTED BY (VCC).

APPEND THE FOLLOWING DOCUMENTS WHEN CHANGING THIS DOCUMENT:		DRAWING CONTENT:		TITLE  SCHEMATIC DIAGRAM RABBIT PROG. CABLE 3.3V – 5.0V		<div> 2900 SPAFFORD ST. DAVIS, CA 95616 530 - 757 - 4616</div>	
		DRAWN BY: (INITIAL RELEASE) E. PEAK	14MAY01				
		REVISED BY: D MUSGROVE	01/21/02				
		APPROVALS: INITIAL RELEASE					
		PROJECT ENGINEER: ERIC PEAK	5/14/01	SIZE <b>B</b>	DWG NO. <b>090-0128</b>		
		ENGINEERING MANAGER: R MATTHEWS	5/14/01				
		SIGNATURES	DATE	SCALE NONE	RELEASE DATE	SHEET 1 OF 1	

