
UNCBAS_3

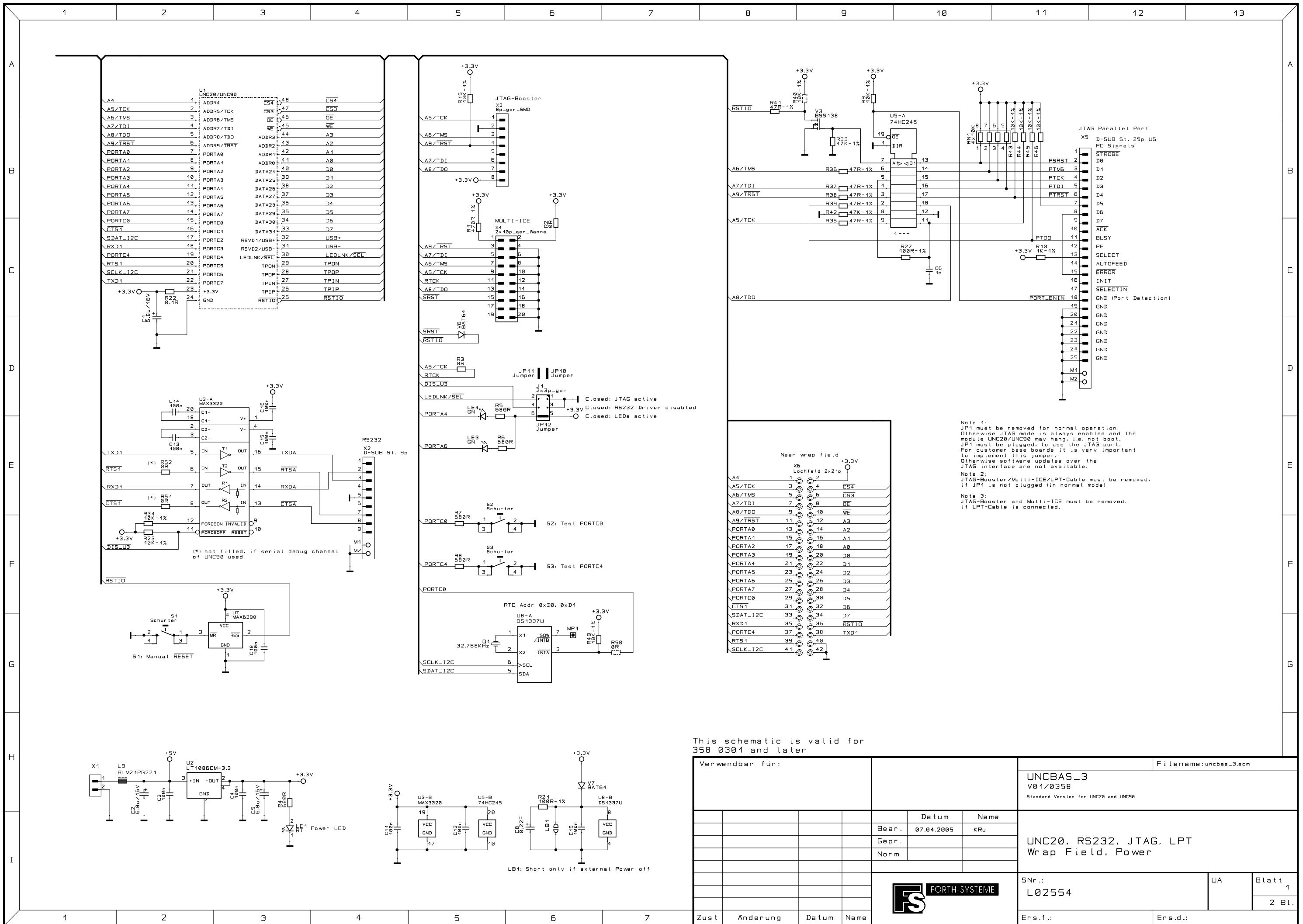
Standard Version for UNC20 and UNC90



FORTH-SYSTEME GMBH

Postfach 1103
Kueferstrasse 8
Tel. ++49 7667 908-0
<http://www.fsforth.de>

D-79200 Breisach, GERMANY
D-79206 Breisach, GERMANY
Fax ++49 7667 908-200
sales@fsforth.de



Note 1:
JP1 must be removed for normal operation. Otherwise JTAG mode is always enabled and the module UNC20/UNC90 may hang, i.e. not boot. JP1 must be plugged, to use the JTAG port. For customer base boards it is very important to implement this jumper. Otherwise software updates over the JTAG interface are not available.

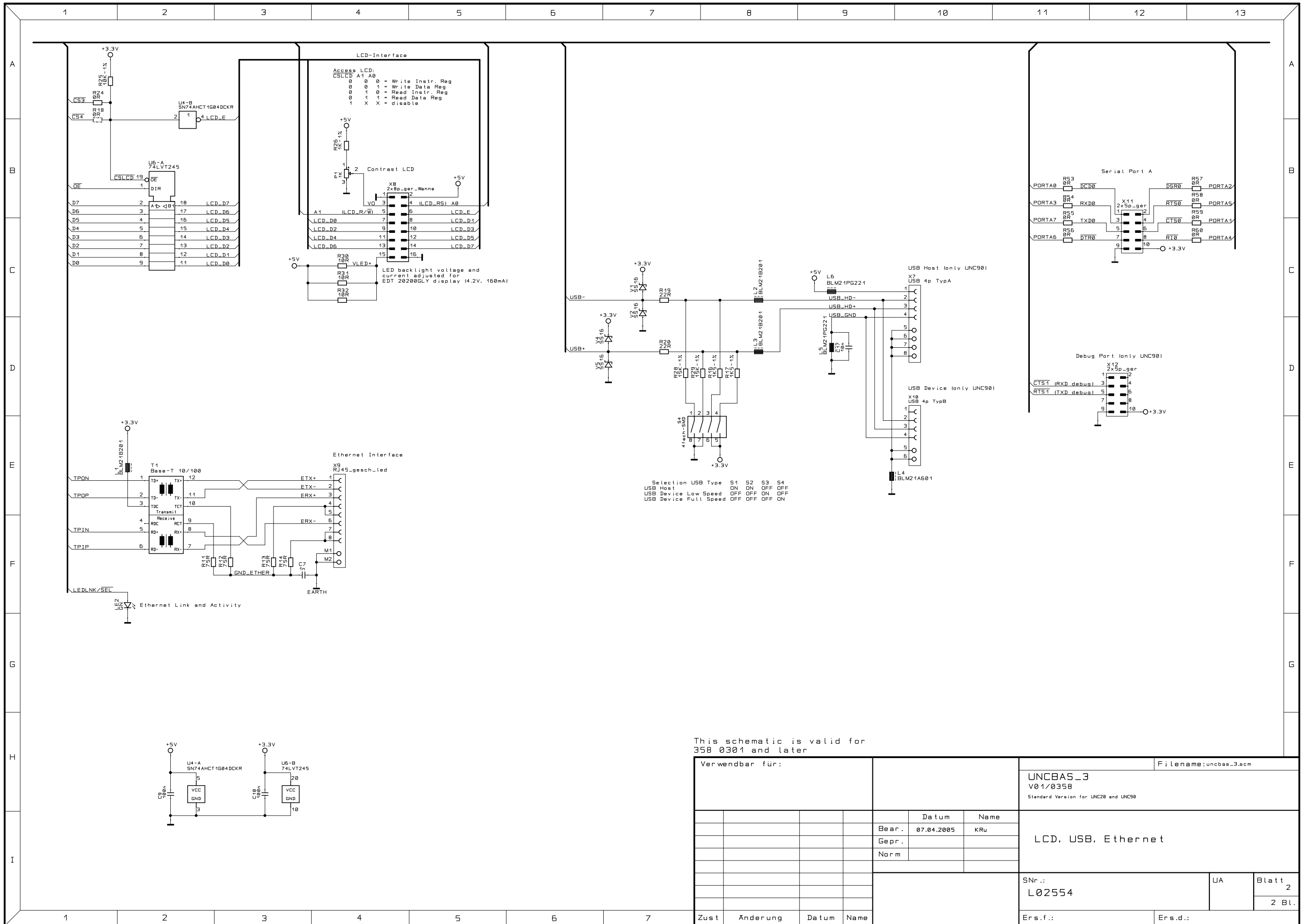
Note 2:
JTAG-Booster/Multi-ICE/LPT-Cable must be removed, if JP1 is not plugged (in normal mode)

Note 3:
JTAG-Booster and Multi-ICE must be removed, if LPT-Cable is connected.

This schematic is valid for 358 0301 and later

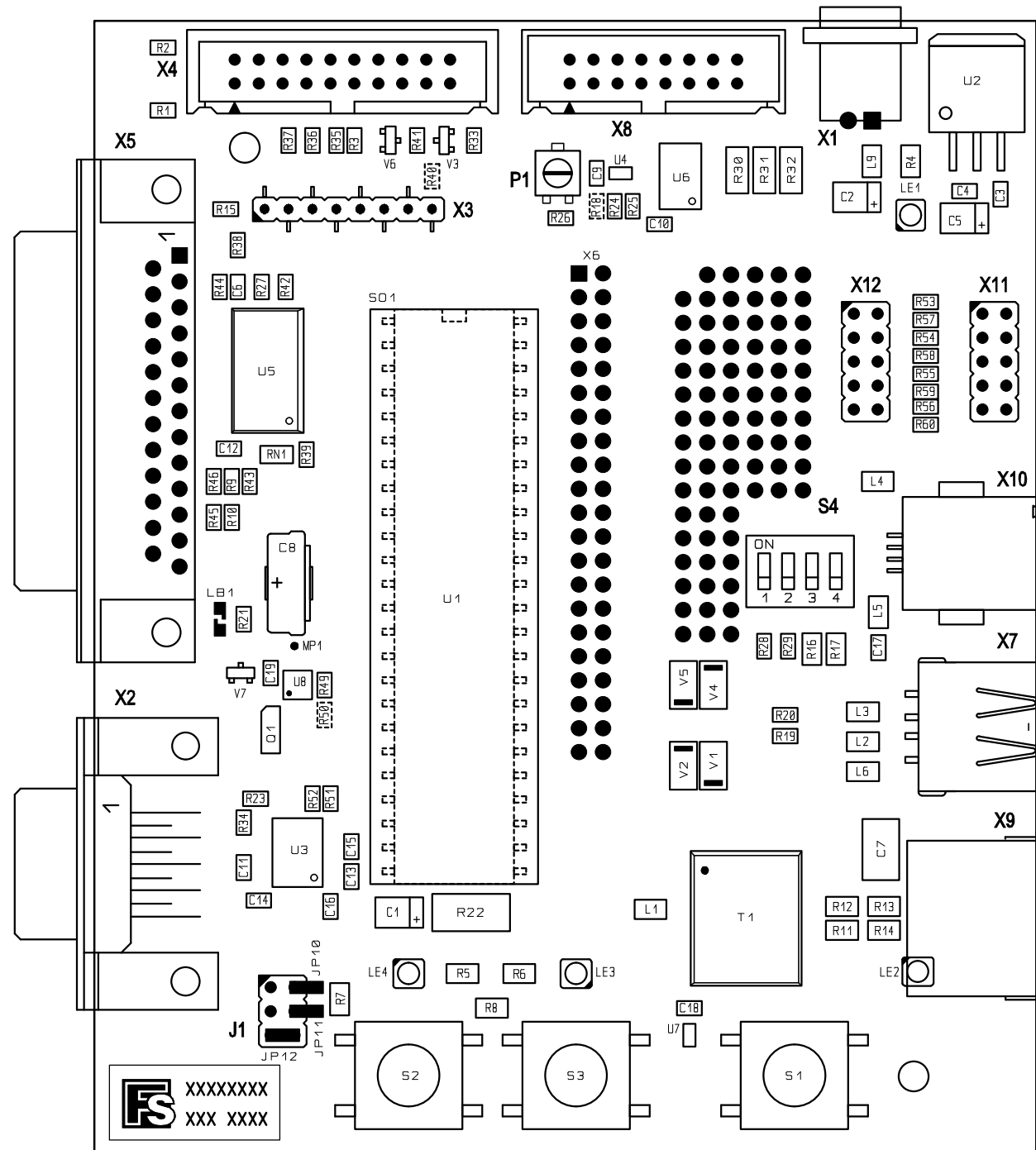
| | | | |
|-----------------|-------|--|--|
| Verwendbar für: | | Dateiname: uncbas_3.scm | |
| | | UNCBAS_3 V01/0358 Standard Version for UNC20 and UNC90 | |
| | Datum | Name | |
| | Bear. | 07.04.2005 KRu | |
| | Gepr. | | |
| | Norm | | |
| | | UNC20, RS232, JTAG, LPT Wrap Field, Power | |
| Zust | | Snr.: L02554 | |
| Änderung | | UA | |
| Datum | | Blatt 1 | |
| Name | | 2 Bl. | |
| | | Ers.f.: | |
| | | Ers.d.: | |





This schematic is valid for 358 0301 and later

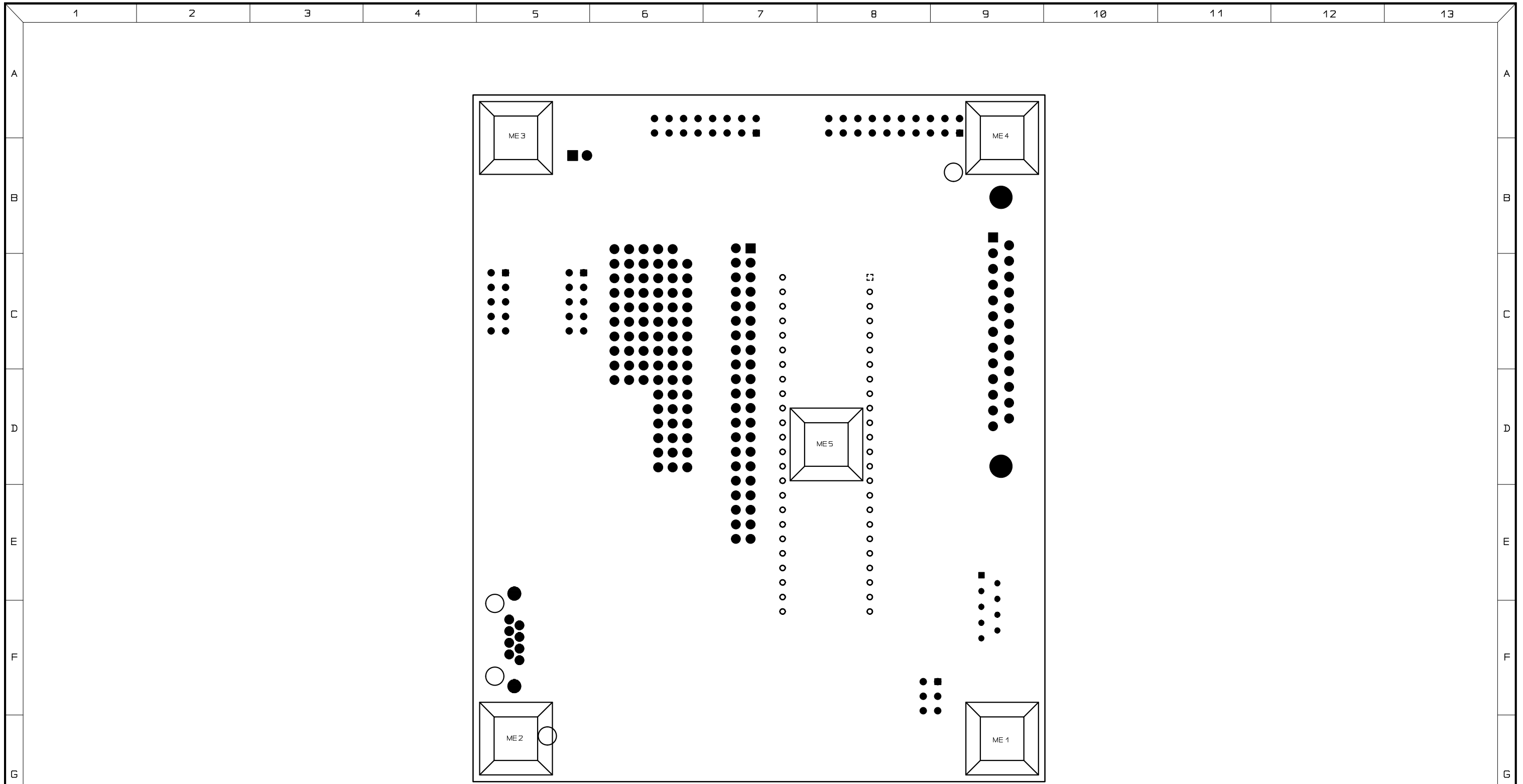
| | | | | | |
|-----------------|----------|-------|------------|--|---------|
| Verwendbar für: | | | | Dateiname: uncbas_3.scm | |
| | | | | UNCBAS_3 V01/0358 Standard Version for UNC20 and UNC90 | |
| | | Datum | Name | | |
| | | Bear. | 07.04.2005 | KRu | |
| | | Gepr. | | | |
| | | Norm | | | |
| | | | | LCD, USB, Ethernet | |
| | | | | Snr.: L02554 | |
| | | | | UA | |
| | | | | Blatt 2 | |
| | | | | 2 Bl. | |
| Zust | Anderung | Datum | Name | Ers.f.: | Ers.d.: |




UNCBAS_3 Placement TOP 07.04.05

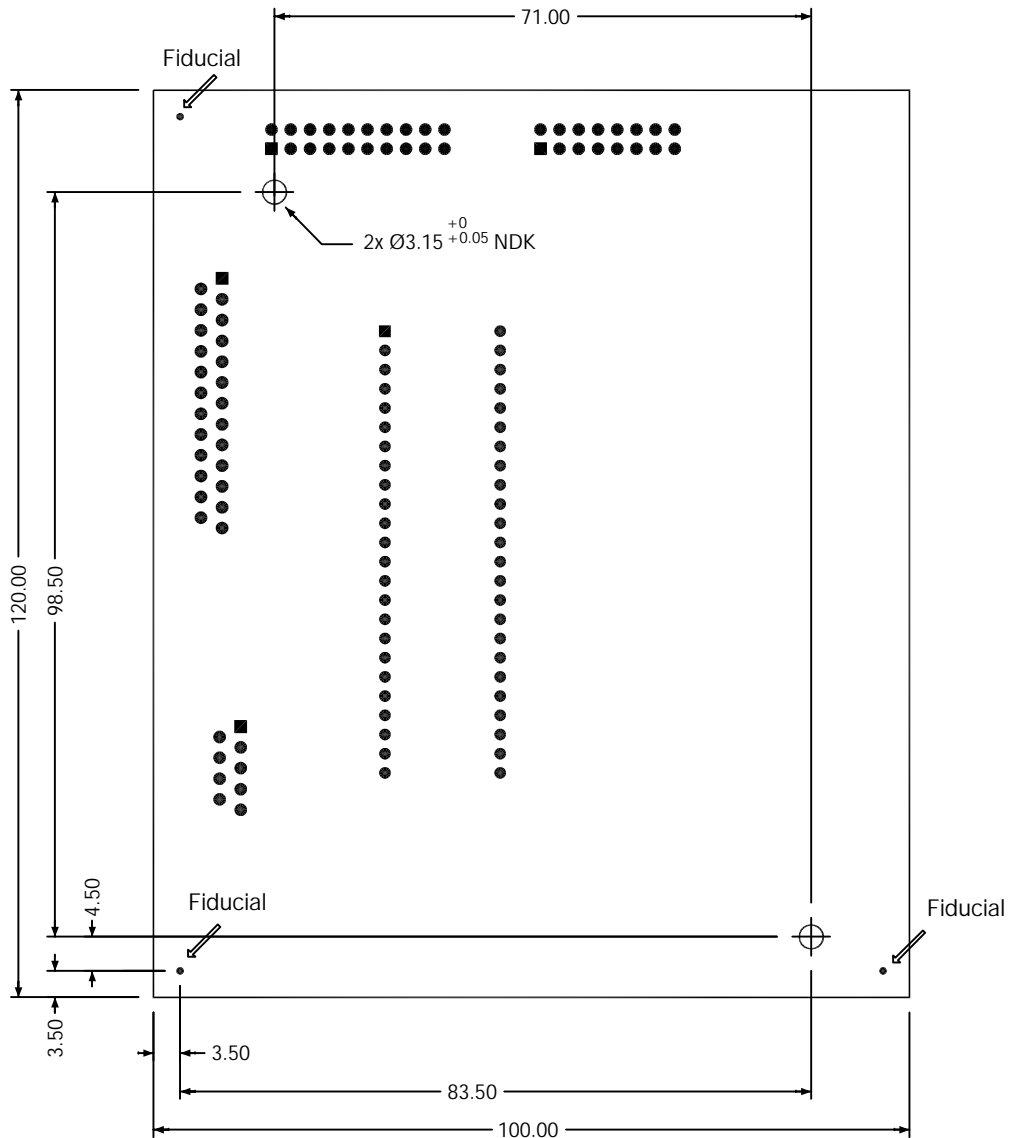
XXXXXXXXX
XXX XXXX

| | | | | | |
|-----------------|----------|--|------|------------------------|---------|
| Verwendbar für: | | Masstab 3:2 | | Filename: Uncbas_3.pcb | |
| | | UNCBAS_3 V01/0358 Standard Version for UNC20 and UNC90 | | | |
| | | Datum | Name | Placement TOP Side | |
| | | Bear. 17.05.05 | SC | | |
| | | Gepr. | | | |
| | | Norm | | | |
| | | | | SNr.: | UA |
| | | | | L02554 | Blatt 1 |
| | | | | 2 Bl. | |
| Zust. | Änderung | Datum | Name | Ers.f.: | Ers.d.: |



UNCBAS_3 Placement BOT 07.04.05

| | | | | | | |
|-----------------|-----------------|---|----------|------------------------|---------|----|
| Verwendbar für: | | Masstab 3:2 | | Filename: Uncbas_3.pcb | | |
| | | UNCBAS_3 V01/0358 Standard Version for UNC20 and UNC90 | | | | |
| | | Datum | Name | Placement BOTTOM Side | | |
| | | Bear. | 07.04.05 | | | SC |
| | | Gepr. | | | | |
| | | Norm | | | | |
| | |  | | SNr.: | UA | |
| | | | | L02554 | Blatt 2 | |
| | | | | 2 Bl. | | |
| A | Changed X4/B J1 | 25.08.03 | JAF | Ers.f.: | | |
| Zust. | Anderung | Datum | Name | Ers.d.: | | |



BEACHTEN:

Versatz der Referenzbohrungen zu den Fiducials $\leq 0,08\text{mm}$.
 Versatz der Fräskontur zu den Fiducials $\pm 0,2\text{mm}$.
 DK- und NDK-Bohrungen in einem Arbeitsgang bohren!

Alle Maße in mm!

| | | | | | | | | | | |
|-----------------|--|--|--|--|--|-------------|--|--------------------------|--|-------------|
| Verwendbar für: | | | | Allgemein-Toleranzen $\pm 0.2\text{mm}$ | | Maßstab 1:1 | | Filename UNCBAS_3_LP.DWG | | |
| | | | | UNCBAS_3 | | | | | | |
| | | | | Datum | | Name | | | | |
| | | | | Bear. 04.04.05 | | SC | | | | |
| | | | | Gepr. | | | | | | |
| | | | | Norm | | | | | | |
| | | | | Dimensions TOP | | | | | | |
| | | | | SNR. L02554 | | | | UA TZ | | Blatt 1 |
| | | | | | | | | 1 Bl. | | |
| Zust. | | | | Änderung | | Datum | | Name | | Ers. für: |
| | | | | | | | | | | Ers. durch: |

