



ENTERPRISE CLASS
4G LTE ROUTER



DIGI TRANSPORT® WR41

Flexible, enterprise class cellular router for remote and mobile networking applications

The Digi TransPort WR41 cellular router offers a robust communications solution with true enterprise class routing, security and firewall. This multifunction cellular router features a flexible design with integrated Wi-Fi access point (with multi SSID) / Client, USB, serial and single port Ethernet switch, as well as a variety of configuration options including multiple serial ports.

The Digi TransPort WR41 offers an advanced routing, security and firewall feature set including stateful inspection firewall and integrated VPN. Enterprise class protocols incorporate BGP, GRE, OSPF and VRRP+, a patented technology built upon

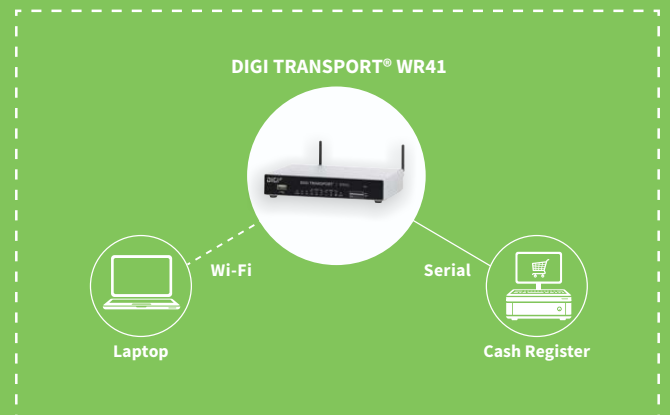
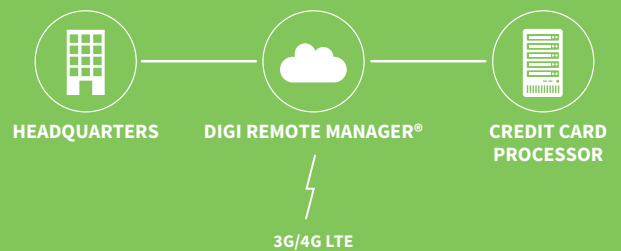
the popular VRRP failover standard providing true auto-sensing, auto-failure and auto-recovery of any line drop.

Digi TransPort WR41 routers are ideal for PCI compliant applications including advanced security, logging and firewall features. Digi Remote Manager® provides easy setup, configuration and maintenance of large installations of Digi TransPort and third-party devices.

BENEFITS

- Enterprise class cellular routers with advanced dynamic routing, security and firewall features
- High speed cellular interfaces
- Integrated 802.11 b/g/n; a/n Wi-Fi access point
- Powerful integrated end user programming
- Digi Remote Manager provides mass configuration, device management, and troubleshooting tools

APPLICATION EXAMPLE



RELATED PRODUCTS



SPECIFICATIONS

Digi TransPort® WR41

WIRELESS INTERFACES

WWAN**

LTE - EMEA/APAC (L1)	LTE CAT 3: 800(B20)/850(B5)/900(B8)/1800(B3)/1900(B2)/2100(B1)/2600(B7) 3G HSPA+: 850/900/1900/2100 MHz 2G EDGE/GPRS: 850/900/1800/1900 MHz Transfer rate (max): 100 Mbps down, 50Mbps up Approvals: Vodafone
LTE - NORTH AMERICA (L5)	Software defined multi-carrier LTE CAT 3: 700(B13,B17)/850(B5)/AWS(B4)/1900(B2,B25) 3G HSPA+: 850/900/1700AWS/1900/2100 MHz 3G EVDO: 800/1900 MHz 2G EDGE/GPRS: 850/900/1800/1900 MHz 2G 1XRTT: 800/1900 MHz Transfer rate (max): 100 Mbps down, 50Mbps up Approvals: Verizon Private Network, DMNR and PNTM, AT&T, Sprint, Telus, Bell
GLOBAL HSPA+ (U9)	3G HSPA+: 850/900/1700AWS/1900/2100 MHz 2G EDGE/GPRS: 850/900/1800/1900 MHz Transfer rate (max): 21 Mbps down, 5.76 Mbps up Approvals: PTCRB, Vodafone
CONNECTOR	(2) 50 Ω SMA (Center pin: female)
SIM SLOTS	(2) Mini-SIM (2FF)
SIM SECURITY	Optional SIM slot cover plate
WI-FI*	
STANDARD	802.11 b/g/n; a/n
MODES	Access point, Client and support for multiple SSID
TRANSMIT POWER	17 dBm ± 2 dBm
RECEIVE SENSITIVITY	54 Mbps / -70 dBm and 11 Mbps / -83.5 dBm
SECURITY	Open or shared key authentication; WEP (64- and 128-bit) encryption; WPA/WPA2 with RADIUS (WPA Enterprise and pre-shared keys)
CONNECTORS	(2) 50 Ω RP-SMA (Center pin: male)
WIRED INTERFACES	
SERIAL	
PORTS	(1) RJ-45; DCE
STANDARD	RS-232
SIGNAL SUPPORT	TXD, RXD, RTS, CTS, DTR, DCD
FLOW CONTROL	Software (XON/XOFF), Hardware supported
ETHERNET	
PORTS	(1) RJ-45; 10/100 Mbps (auto-sensing)
USB	
PORTS	(1) USB 1.0 Type A
MANAGEMENT	
REMOTE MANAGEMENT	Digi Remote Manager® (cloud-based); SNMP v1/v2c/v3 (user installed/managed)
LOCAL MANAGEMENT	Web Interface (HTTP/HTTPS); CLI (Telnet, SSH, SMS, Serial port)
MANAGEMENT/ TROUBLESHOOTING TOOLS	FTP, SFTP, SCP, Protocol Analyzer with PCAP for Wireshark, Event Logging with Syslog and SMTP, NTP/SNTP
MEMORY	64 MB RAM, 32 MB NOR Flash

* Optional hardware

** Transfer rates are network operator dependent

SPECIFICATIONS

Digi TransPort® WR41

POWER	
INPUT	8-48 VDC
CONSUMPTION	6W max, 4W typical
CONNECTOR	Standard temp variants: Locking barrel; Extended temp variants: 4-pin terminal block (2 pins are used for power; the other 2 pins are not used).
DC POWER CORD*	Locking barrel to bare wire or 4-pin connector to bare wire
DC POWER SUPPLY*	100-240 VAC 50/60 Hz; Option of standard temperature or extended temperature
BATTERY BACKUP	None
PHYSICAL	
DIMENSIONS (L X W X H)	4.7 in x 6.8 in x 1.3 in (120 mm x 173 mm x 32 mm)
WEIGHT	1.27 lb (0.53 kg)
STATUS LEDS	Power, LAN, Wi-Fi, WWAN (Link, Act, SIM), Signal strength, Serial
MATERIAL/RATING****	Industrial (Metal)/ IP30
MOUNTING	Brackets for wall mount & DIN rail sold separately
ENVIRONMENTAL	
OPERATING TEMPERATURE ***	0° C to 40° C; Extended temp optional (-10° C to +70° C (Wi-Fi variants); -25° C to +70° C (non-Wi-Fi variants)) Reduced cellular performance may occur above +60° C
STORAGE TEMPERATURE	-40° C to +85° C
RELATIVE HUMIDITY	0% to 95% (non-condensing) @ 25° C
ETHERNET ISOLATION	1.5 kV RMS
SERIAL PORT PROTECTION (ESD)	15 kV
HAZARDOUS (CLASS 1 DIV 2)	N/A
CONFORMAL COATING	N/A
CELLULAR	PTCRB, NAPRD.03, GCF-CC, R&TTE, EN 301 511
CDMA/EV-DO	CDG TIA/EIA-690, CDG TIA/EIA-98-E
SAFETY	UL 60950, CSA 22.2 No. 60950, EN60950
EMISSIONS/IMMUNITY	CE, FCC Part 15 Class B, AS/NZS CISPR 22, EN55024, EN55022 Class B
WARRANTY	
PRODUCT WARRANTY	5 years

ENTERPRISE SOFTWARE

DESCRIPTION

PROTOCOLS	HTTP, HTTPS, FTP, SFTP, SSL, SMTP, SNMP (v1/v2c/v3), SSH, Telnet and CLI for web management; remote management via Digi Remote Manager; SMS management, protocol analyzer, ability to capture PCAP for use with Wireshark; DynDNS; Dynamic DNS client compatible with BIND9/No-IP/DynDNS
SECURITY/VPN	Stateful inspection firewall with scripting, address and port translation; VPN: IPSec with IKEv1, IKEv2, NAT Traversal; SSL, SSLv2, FIPS 197, Open VPN client and server; PPTP, L2TP; (5) VPN Tunnels (upgradable to a maximum of 200); Cryptology: SHA-1, MD5, RSA; Encryption: DES, 3DES and AES up to 256-bit; Authentication: RADIUS, TACACS+, SCEP for X.509 certificates; Content Filtering (via 3rd party); MAC Address Filtering; VLAN support; Ethernet Port Isolation
ROUTING/FAILOVER	IP pass-through; NAT, NATP with IP Port Forwarding; Ethernet Bridging; GRE; Multicast Routing; Routing Protocols: PPP, PPPoE, RIP (v1, v2) OSPF, SRI, BGP, iGMP routing (multicast); RSTP (Rapid Spanning Tree Protocol); IP Failover: VRRP, VRRP+TM; Automatic failover/failback to second GSM network/Standby APN
OTHER PROTOCOLS	DHCP; Dynamic DNS client compatible with BIND9/No-IP/DynDNS; QoS via TOS/DSCP/WRED; Modbus UDP/TCP to serial; X.25 including XOT, SNA/IP, TPAD and PAD; Protocol switch; Modbus bridging for connecting diverse field assets

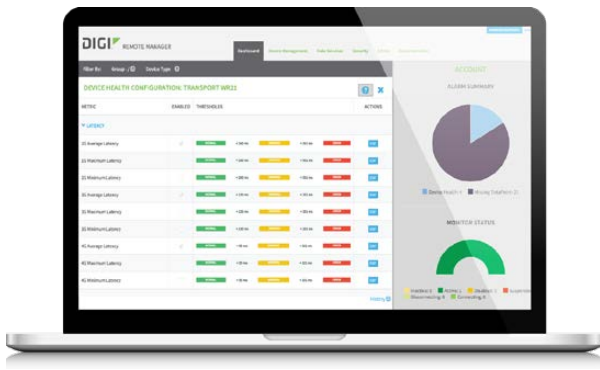
* Optional hardware.

** Transfer rates are network operator dependent

*** Standard temperature power supplies may reduce temperature range.

**** The enclosure rating is self-declared and has not been formally verified by an independent lab.

DIGI REMOTE MANAGER®



CAPABILITIES

- Centralized management of remote devices over 3G/4G LTE
- Define standard configurations and automatically monitor individual devices for PCI security compliance
- Report and alert on performance statistics, including connection history, signal quality, latency, data usage and packet loss
- No servers or applications to operate and maintain
- Complete tasks for your entire device network in minutes
- Edit configurations and update firmware for your individual devices or groups
- Monitor the status and location of your remote device via a web browser
- Active or deactivate cellular lines and monitor data to ensure you never incur overage charges

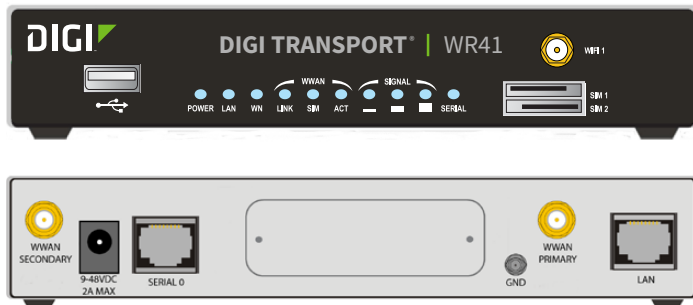
INFRASTRUCTURE

- Hosted in a commercial-grade SAS 70-certified environment
- Superior availability, operating to 99.9% or greater
- Open APIs available to support application development

SECURITY

- Certified SSAE-16 facilities
- Member of the Cloud Security Alliance
- Over 175 Security Controls in place to protect your data
- Enables compliance with security frameworks like PCI, HIPAA, NIST and more
- Earned SkyHigh's Cloud Trust Program highest ranking of Enterprise-Ready

PRODUCT IMAGES



PART NUMBERS	DESCRIPTION
WR41-L100-NE1-SW	4G LTE International, Wi-Fi
WR41-L500-NE1-SU	4G LTE Multi-Carrier Software Defined, North America, Wi-Fi

DIGI SERVICE AND SUPPORT / You can purchase with confidence knowing that Digi is always available to serve you with expert technical support and our industry leading warranty. For detailed information visit www.digi.com/support.

© 1996-2018 Digi International Inc. All rights reserved.
All trademarks are the property of their respective owners.

DIGI INTERNATIONAL WORLDWIDE HQ
877-912-3444 / 952-912-3444 / www.digi.com

DIGI INTERNATIONAL GERMANY
+49-89-540-428-0

DIGI INTERNATIONAL JAPAN
+81-3-5428-0261 / www.digi-intl.co.jp

DIGI INTERNATIONAL SINGAPORE
+65-6213-5380

DIGI INTERNATIONAL CHINA
+86-21-50492199 / www.digi.com.cn

91001725
D8/218

