



# Dual WAN Ethernet Ports

6330-MX and 6350-SR

# Dual WAN Ethernet Ports

Difficulty level: *Beginner*

## Goal

---

Reconfigure an existing LAN port on the 63xx-series router to serve as a WAN interface.

## Setup

---

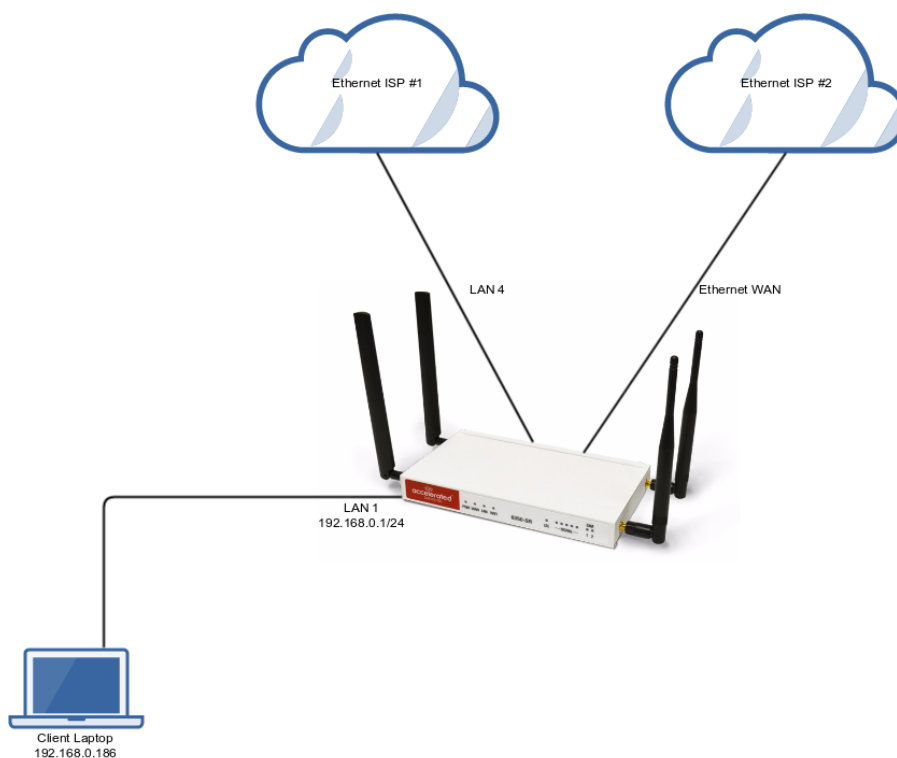
This article assumes that a second Internet connection is available from an Ethernet cable, and that a primary connection is established via an Ethernet connection in the WAN port. Prior to reconfiguring the LAN port, all interfaces should be operating under default settings, which provide DHCP connectivity to client devices. For more details on the default settings of the 63xx-series routers, see the [Default Settings](#) section of the User Manual.

## Sample

---

The sample configuration below shows a 63xx-series router with two Internet connections established via Ethernet cables. Ethernet ISP #1 is connected to the reconfigured LAN (port 4) interface, and Ethernet ISP #2 is connected to the WAN Ethernet port.

- ! The additional WAN interface can then be used in conjunction with other WAN interfaces when configuring failover, load balancing, or other advanced routing policies.



## Sample Configuration

---

Open the configuration profile for the 63xx-series router and make the following changes:

1. In the **Network** -> **Interfaces** section, specify a name for the new interface and click **Add**.
2. Ensure **Enable** is selected and adjust the **Interface type** if necessary.
3. Specify the **Device** that should be associated with the new WAN interface. (Per the sample above, this will be LAN 4.)
4. Set the **Zone** to **External**.
5. In the **Network** -> **Bridges** section, expand the **LAN** entry.
6. Using the pull-down menu next to the **Device** indicating LAN 4, select **Delete**.

The LAN port is now reconfigured to serve as a WAN interface.

Settings

- Central management
- Modem
- Network
  - Interfaces
    - Loopback
    - Default IP
    - Default Link-local IP
    - Accelerated View endpoint
    - Modem
    - LAN
    - WAN
    - WAN2**
      - Enable
      - Interface type: Ethernet
      - Zone: Any
      - Device:   
Required value
      - IPv4
      - IPv6
      - MAC address whitelist

Add Interface  Add