



# Content Filtering using Domain-based Routing

6310-DX

# Content Filtering using Domain-based Routing

Difficulty: *Beginner*

Minimum firmware version: *18.10.225.15*

## Goal

---

To use the Digi ACL device's cellular modem in tandem with its primary WAN Ethernet port, but block traffic to a particular domain/website.

## Setup

---

This article assumes the LAN ports are operating under default settings, which provide DHCP connectivity to devices connected to the ACL device's LAN ports.

For this setup, you will need the ACL device setup with both a primary WAN Ethernet connection, and a cellular modem connection.

## Sample

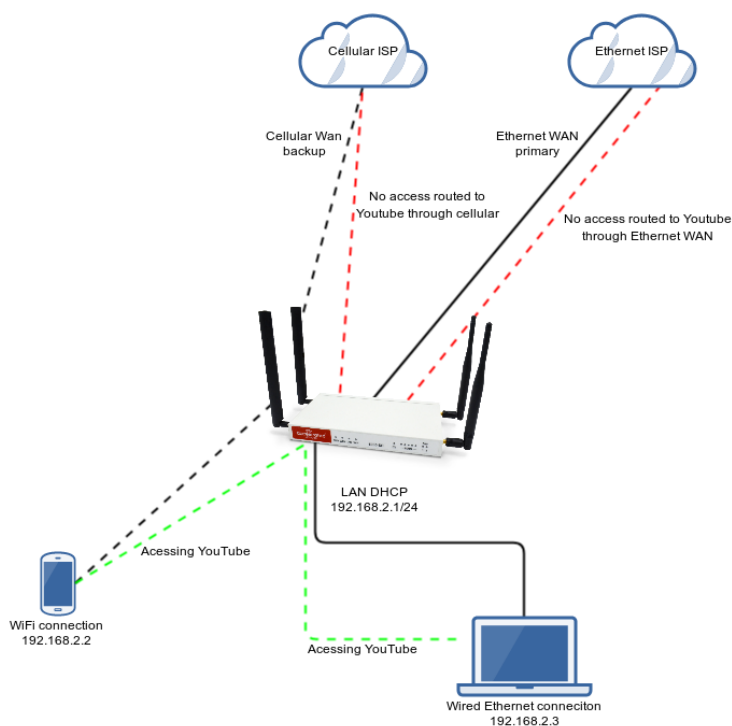
---

The sample configuration below shows Digi ACL router (in this example, a 6350-SR) with two Internet connections: a cellular-based WAN connection through the 6350-SR's modem, and a broadband-based WAN connection through the 6350-SR's WAN Ethernet port.

This setup shows two client devices on a 6350-SR's LAN ports, a smartphone and a laptop. The smartphone and the laptop receive their IP address via DHCP from the 6350-SR.

The domain-based routing we are going to setup will accomplish the following.

1. The 6350-SR uses the Ethernet WAN as its primary interface.
2. The 6350-SR has a cellular modem connection, used as a secondary WAN interface.
3. The 6350-SR drops any traffic destined for youtube.com by redirecting it to its own loopback interface.



## Sample Configuration

Open the configuration profile for the 6350-SR and make the following changes.

1. Under **Network -> Routes -> Policy-based routing**, setup a new policy with the following settings:
  1. **Interface:** Loopback
  2. **Source address -> Type:** Zone (this is the default)
  3. **Source address -> Zone:** Any (this is the default)
  4. **Destination address -> Type:** Domain
  5. **Destination address -> Domains:** youtube.com
2. Save the configuration.

If you would like to setup additional domains to be blocked in the same way, you can add more domains by clicking on the **Add** button next to **Add Domain**, then enter in the additional domain site.

Network

- Interfaces
- Virtual LAN
- Bridges
- Routes
  - Static routes
  - Policy-based routing
    - 1. block youtube
      - Enable
      - Label block youtube
      - Interface Interface: Loopback
      - Exclusive
      - IP version Any
      - Protocol Any
      - Source address
      - Destination address
        - Type Domain
          - Domains
            - 1. Domain youtube.com
            - Add Domain: Add
    - Add Route policy: Add

- Routing services
- Modems