



## ERRATA SHEET # 150320.V2

### Date:

March 24, 2015

### Product:

XBee Development Kits

### Summary:

This errata sheet documents a resolution for a known issue with the USB port use on XBee® development board kits shipped prior to 2/23/15. This Errata Sheet is in reference to Product Notice #150225.

### Issue:

Some Digi XBee® development board kits were confirmed to exhibit an inability to enumerate when powered solely from a PC via the USB port. The cause for failure was found to be on the development board (see below Table 1 for affected board versions) where a small variation on the voltage regulator causes some USB circuits to not function properly. This issue can be resolved reliably by using the external power supply supplied in most of the kits. See the resolution detail below for more information. Once a product initially enumerates the product should continue to operate to specification.

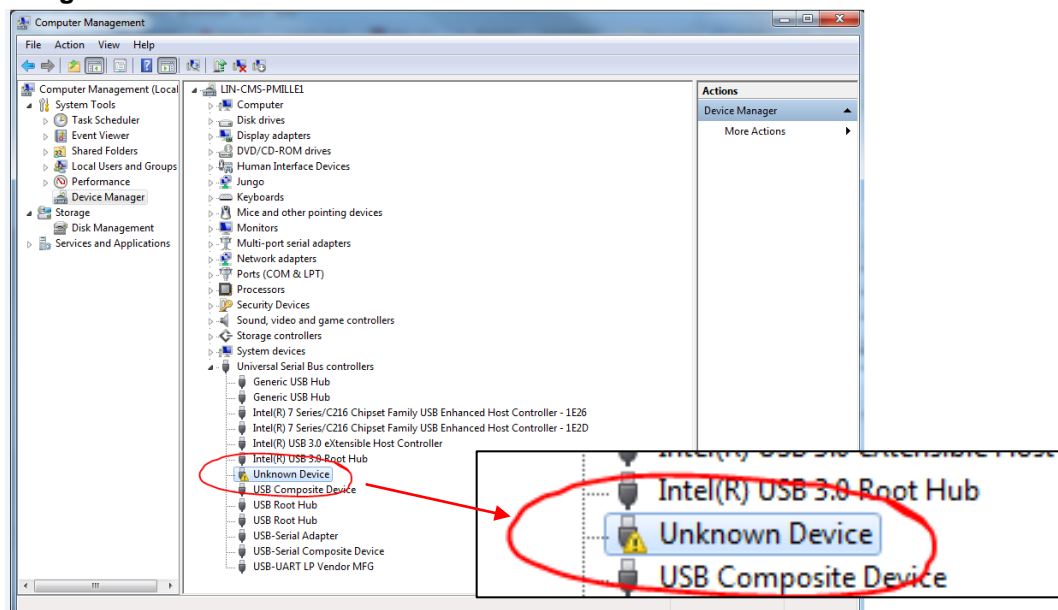
### Determining the failure:

If the board is able to consistently connect through the USB, it is considered ok and not prone to this issue. If it is not able to consistently connect through the USB, because the issue is intermittent, we suggest the user verifies port connectivity three times in succession.

To verify if your board may be faulty, perform the following test:

- 1) Plug in the USB port to your PC
- 2) Open up “Device Manager” from your windows PC to make sure all USB units do not have errors. A faulty connection will show up as a USB icon with an exclamation mark. Below in image 1 is a screen shot highlighting a faulty USB connection

Image 1:



**Resolution:**

To resolve the issue, the development board must be supplied with an external power supply. Specifically, the barrel jack must be supplied with between 6v to 20v of power, prior to connecting the USB port. If the barrel jack is supplied with between 6v to 20v prior to the USB connection, the board will always function properly. However, the barrel jack must be connected first, followed by the USB to operate correctly.

Most of the development kits include one or more 12V power supplies to power one or more boards. If your kit did not have a power supply and you need one, or would like to return your development board for a new fully functional unit, please see the “customer resolution” information and tables below.

**Customer Resolution:**

If you need a replacement power supply or wish to exchange any affected product, you may request an RMA from the Customer Service team. Please send your request to [DigiRMAs@digi.com](mailto:DigiRMAs@digi.com) or contact us by phone at 800-344-4273 Option 4. Please reference the Errata Sheet # along with Part Number and Quantity of the affected part(s).

If you have technical related concerns or questions about this notice please contact our technical support department via telephone at 801-765-9885 or submit a request online at <http://www.digi.com/support/eservice/>. Please reference the Errata Sheet # along with Part Number and Quantity of the affected part(s).

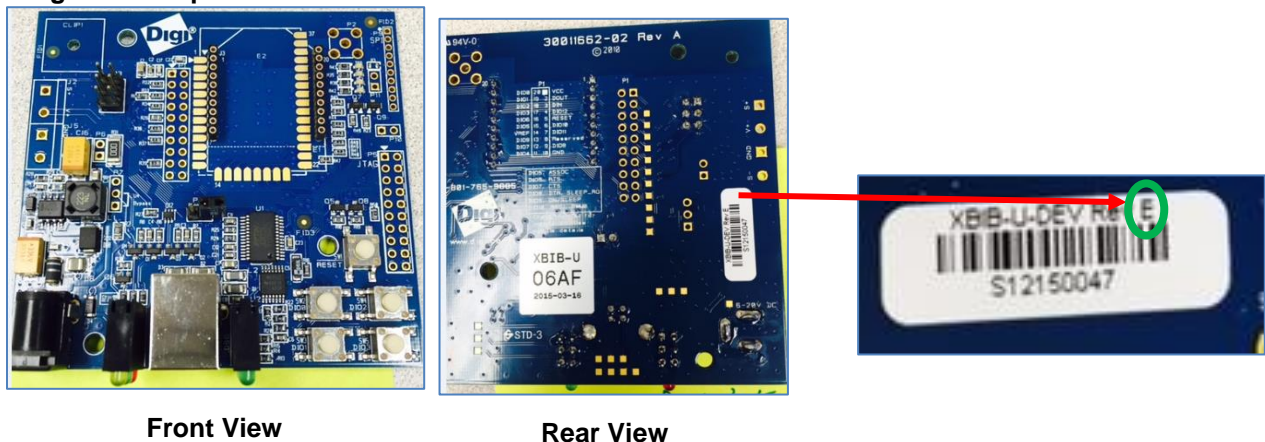
---

Product Management  
Digi International

**Table 1: Affected Development Boards (Revision E and later revisions are not affected)**

Part Number	Revision	Description
XBIB-U-DEV	D	XBee, Dev Interface Board USB
XBIB-U-SS	D	XBee USB Interface Board - SMT Socket

**Image 2: Example board P/N: XBIB-U-DEV:**



**Table 2: Affected Kits without power supplies**

ITEM	DESCRIPTION	DEVELOPMENT BOARD PART NUMBER(S)	Replacement Power Supply
XB24-DKS-INT	XBee Starter Development Kit	XBIB-U-DEV (QTY 2)	76000738 (PS,12VDC 100-240V 18W 1.5A)
XB24-PDK-INT	XBee Professional Developer's	XBIB-U-DEV (QTY 5)	
XBP24-DKS-INT	XBee-PRO Starter Development K	XBIB-U-DEV (QTY 2)	
XBP24BZ7B-DK	XBP,ZB Programmable Dev Kit	XBIB-U-DEV (QTY 2)	
XBP24BZ7B-DK-W	XBP,ZB Int Programmable Dev Kit	XBIB-U-DEV (QTY 2)	
XBP24BZ7B-DK-WJ	XBP,ZB Jpn Programmable Dev Kit	XBIB-U-DEV (QTY 2)	
XK2B-WFT-0	XBee, S6B Wi-Fi Development Kit	XBIB-U-DEV (QTY 1); XBIB-U-SS (QTY 1)	
XK2-Z7SB0	XBP, ZB SMT 32K Prog Dev Kit US	XBIB-U-SS (QTY 2)	
XK2-Z7SBE0	XBP, ZB SMT 32K Prog Dev Kit EMEA	XBIB-U-SS (QTY 2)	
XK2-Z7SBJ0	XBP, ZB SMT 32K Prog Dev Kit JPN	XBIB-U-SS (QTY 2)	
XK2B-WFT-0	XBee, S6B Wi-Fi Development Kit	XBIB-U-DEV (QTY 1); XBIB-U-SS (QTY 1)	

**Table 3: Affected Kits with External Power Supplies Included**

ITEM	DESCRIPTION	BOARD / REPLACEMENT BOARD	POWER SUPPLY (INCLUDED)	Replacement Power Supply
XB24-DKS	XBee Starter Development Kit	XBIB-U-DEV (QTY 2)	24000056 (PS,12VDC 100-240V 18W 1.5A) (QTY 1) 18000291 (CONN,AC Plug Kit EU,UK,AUST) (QTY 1)	76000738 (PS,12VDC 100-240V 18W 1.5A)
XB24-DKSJ	XB 2.4,S1 Starter Kit,Jpn	XBIB-U-DEV (QTY 2)	JP5P2-9V11-6F (9V 1.1A 10 Watt Power Supply) (QTY 1)	
XB24-DMDK	XBee DigiMesh 2.4 Dev Kit	XBIB-U-DEV (QTY 4)	24000056 (PS,12VDC 100-240V 18W 1.5A) (QTY 2) 18000291 (CONN,AC Plug Kit EU,UK,AUST) (QTY 2)	
XB24-DMDK-WJ	XBee DigiMesh 2.4 Dev Kit Jpn	XBIB-U-DEV (QTY 4)	JP5P2-9V11-6F (9V 1.1A 10 Watt Power Supply) (QTY 2)	
XB24-PDK	XBee Professional Developer's	XBIB-U-DEV (QTY 5)	24000056 (PS,12VDC 100-240V 18W 1.5A) (QTY 3) 18000291 (CONN,AC Plug Kit EU,UK,AUST) (QTY 3)	
XB24-PDKJ	XBee 802.15.4 Dev Kit Jpn	XBIB-U-DEV (QTY 5)	JP5P2-9V11-6F (9V 1.1A 10 Watt Power Supply) (QTY 3)	
XBP08-DK	XBee-PRO 868 Development Kit	XBIB-U-DEV (QTY 2)	24000056 (PS,12VDC 100-240V 18W 1.5A) (QTY 1) 18000291 (CONN,AC Plug Kit EU,UK,AUST) (QTY 1)	
XBP09-DMDK	XBee-PRO DigiMesh 900 Dev Kit	XBIB-U-DEV (QTY 4)	24000056 (PS,12VDC 100-240V 18W 1.5A) (QTY 2) 18000291 (CONN,AC Plug Kit EU,UK,AUST) (QTY 2)	
XBP24-DKS	XBee-PRO Starter Development Kit	XBIB-U-DEV (QTY 2)	24000056 (PS,12VDC 100-240V 18W 1.5A) (QTY 1) 18000291 (CONN,AC Plug Kit EU,UK,AUST) (QTY 1)	
XBP24-DKSJ	XBeePRO Starter Dev Kit Japan	XBIB-U-DEV (QTY 2)	JP5P2-9V11-6F (9V 1.1A 10 Watt Power Supply) (QTY 1)	
XK-Z11-M	ZigBee, RF Module Dev Kit	XBIB-U-DEV (QTY 4)	24000056 (PS,12VDC 100-240V 18W 1.5A)(QTY2)	
XK-Z11-M-W	ZigBee, RF Module Dev Kit-Int	XBIB-U-DEV (QTY 4)	24000056 (PS,12VDC 100-240V 18W 1.5A) (QTY 2) 18000291 (CONN,AC Plug Kit EU,UK,AUST) (QTY 2)	
XK-Z11-M-WA	ZigBee, RF Module Dev Kit - Austr	XBIB-U-DEV (QTY 4)	24000056 (PS,12VDC 100-240V 18W 1.5A) (QTY 2) 18000291 (CONN,AC Plug Kit EU,UK,AUST) (QTY 2)	
XK-Z11-T	iDigi Tank ZB US Kit	XBIB-U-DEV (QTY 1)	24000077 (PS,12V OUT 100/240 LOCK, ISOL RTN)(QTY 1)	
XK-Z11-T-W	iDigi Tank ZB Kit Int	XBIB-U-DEV (QTY 1)	24000077 (PS,12V OUT 100/240 LOCK, ISOL RTN)(QTY 1)	
XK9-XCT-0	XBee-PRO, XSC S3B Dev Kit	XBIB-U-DEV (QTY 2)	JP5P2-9V11-6F (9V 1.1A 10 Watt Power Supply)(QTY 1)	
XK9-XCT-2	XBee-PRO, XSC S3B 920 MHz 9.6	XBIB-U-DEV (QTY 2)	24000056 (PS,12VDC 100-240V 18W 1.5A) (QTY 1) 18000291 (CONN,AC Plug Kit EU,UK,AUST) (QTY 1)	
XKP9-DM-0	XBee-PRO 900HP S3B Dev Kit (Do	XBIB-U-DEV (QTY 3)	JP5P2-9V11-6F (9V 1.1A 10 Watt Power Supply)(QTY 2)	
XKP9-DM-1	XBee-PRO 900HP S3B 920MHz (B	XBIB-U-DEV (QTY 3)	24000056 (PS,12VDC 100-240V 18W 1.5A) (QTY 2) 18000291 (CONN,AC Plug Kit EU,UK,AUST) (QTY 2)	
XKP9-DM-2	XBee-PRO 900HP S3B 920MHz (A	XBIB-U-DEV (QTY 3)	24000056 (PS,12VDC 100-240V 18W 1.5A) (QTY 2) 18000291 (CONN,AC Plug Kit EU,UK,AUST) (QTY 2)	
XKP9-DM-4	XBee-PRO 900HP S3B 920MHz (S	XBIB-U-DEV (QTY 3)	24000056 (PS,12VDC 100-240V 18W 1.5A) (QTY 2) 18000291 (CONN,AC Plug Kit EU,UK,AUST) (QTY 2)	
XKP9-DMB0	XBP, PROG 900HP S3B DEV KIT	XBIB-U-DEV (QTY 3)	JP5P2-9V11-6F (9V 1.1A 10 Watt Power Supply)(QTY 2)	
XK-Z11-S	ZigBee SMT RF Module Dev Kit	XBIB-U-SS (QTY 4)	24000056 (PS,12VDC 100-240V 18W 1.5A)(QTY 2)	
XK-Z11-S-W	ZigBee SMT RF Module Dev Kit-In	XBIB-U-SS (QTY 4)	24000056 (PS,12VDC 100-240V 18W 1.5A) (QTY 2) 18000291 (CONN,AC Plug Kit EU,UK,AUST) (QTY 2)	
XK-Z11-S-WA	ZigBee SMT RF Module Dev Kit - A	XBIB-U-SS (QTY 4)	24000056 (PS,12VDC 100-240V 18W 1.5A) (QTY 2) 18000291 (CONN,AC Plug Kit EU,UK,AUST) (QTY 2)	
XK8-DMS-0	XBee, 865/868LP Dev Kit	XBIB-U-SS (QTY 3)	24000056 (PS,12VDC 100-240V 18W 1.5A) (QTY 2) 18000291 (CONN,AC Plug Kit EU,UK,AUST) (QTY 2)	
XK8-DMSB0	XBee, 865/868LP Programmable	XBIB-U-SS (QTY 3)	24000056 (PS,12VDC 100-240V 18W 1.5A) (QTY 2) 18000291 (CONN,AC Plug Kit EU,UK,AUST) (QTY 2)	