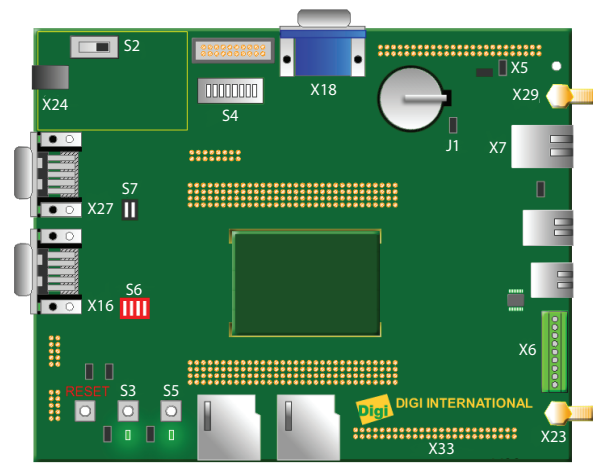


# 1 Verify Kit Contents

Verify that your kit contains one of each of these components:



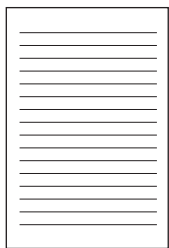
Development Board



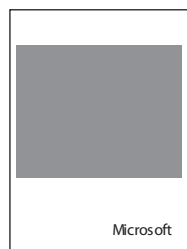
Quick Start Guide (this guide)



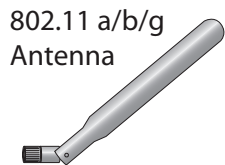
Digi JumpStart CD



Certification Card



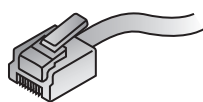
Windows Embedded CE 6.0 180-Day Evaluation Kit



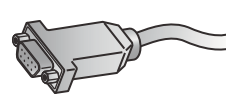
802.11 a/b/g Antenna



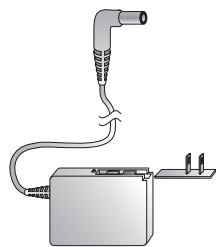
802.11 b/g Antenna



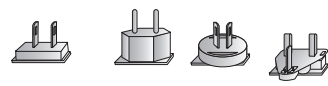
Ethernet Cable



Serial Null Modem Cable



Power Supply



Alternative Power Supply Plugs



## Quick Start Guide

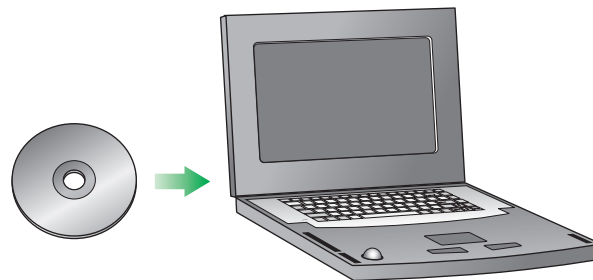
### Digi JumpStart Kit®

Windows Embedded CE 6.0  
ConnectCore™ Wi-9M 2443



90033928\_C

# 2 Install Software



- a Insert the Digi JumpStart CD. If autorun is enabled, the "Welcome" web page will appear. If not, open the file "welcome.html" on the Digi JumpStart CD. Follow the instructions on the "Welcome" page to install Digi Embedded Windows CE software.

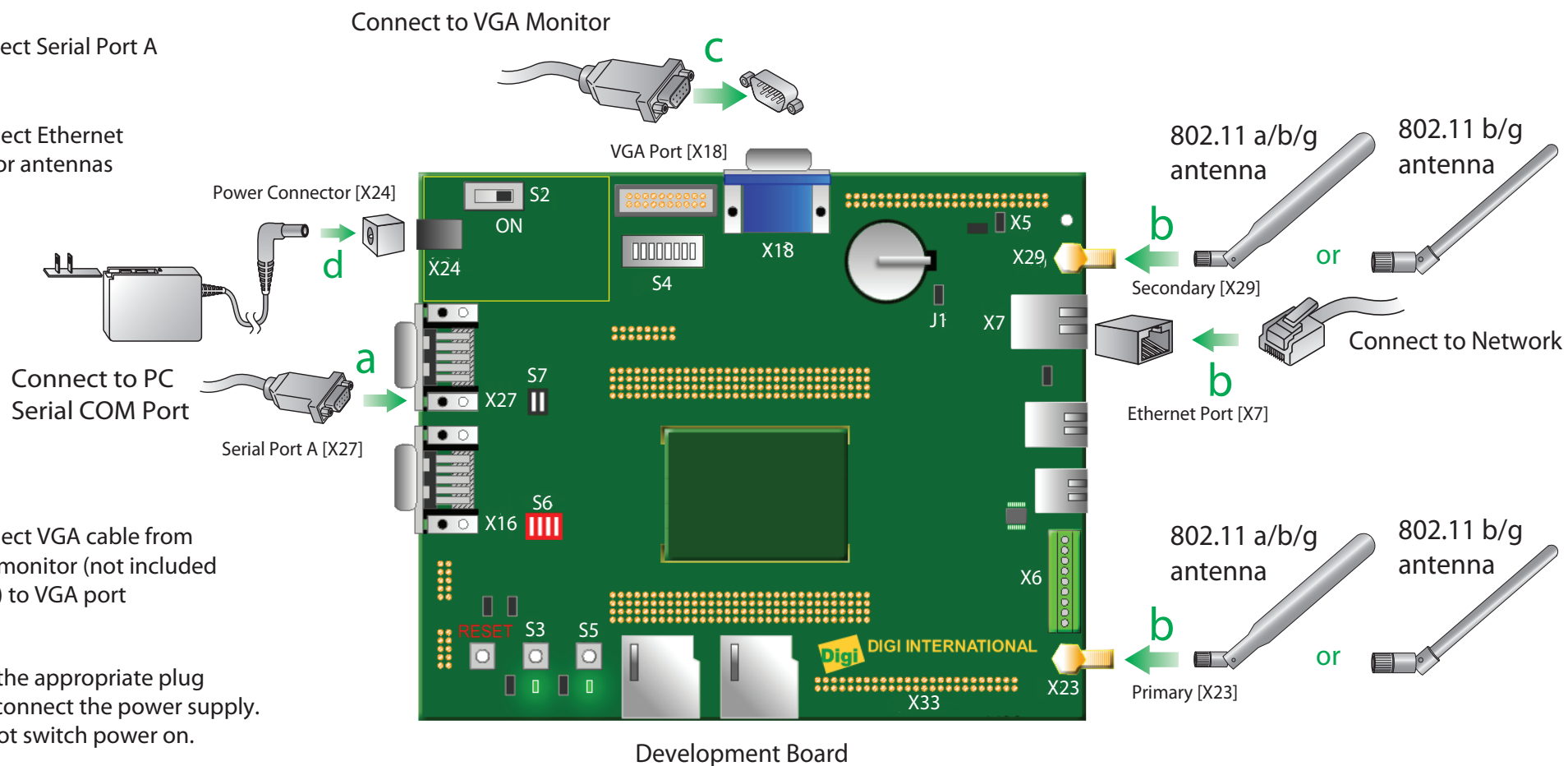
# 3 Connect Hardware to Development Board

- a Connect Serial Port A

- b Connect Ethernet and/or antennas

- c Connect VGA cable from VGA monitor (not included in kit) to VGA port

- d Add the appropriate plug and connect the power supply. Do not switch power on.



# 4 What's Next?

- a Software instructions are on the Welcome page of the CD-ROM. When the software installation is complete, follow the instructions in *Building Your First Application*. This guide introduces you to quickly creating and running an application in the target platform. *Building Your First Application* is accessible from the Start menu group.

- b After going through *Building Your First Application*, you are encouraged to read the 'Digi JumpStart for Windows Embedded CE 6.0 User's Guide,' accessible from the Visual Studio menu **Help > Help Contents**, which explains in detail all the elements of the development process such as kernel configuration, debugging, file transfer, firmware update, etc.