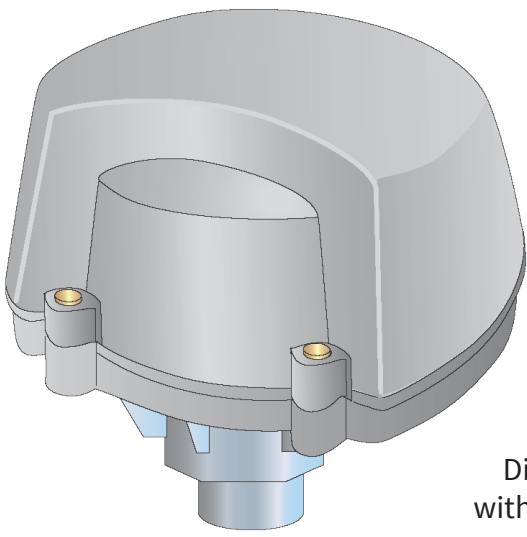


Quick Start Guide

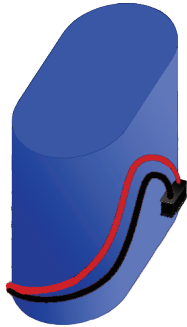
Digi Connect Tank v2

90001471 B

1 Verify the hardware



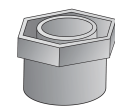
Digi Connect Tank v2 with four retaining screws



Battery



Magnet

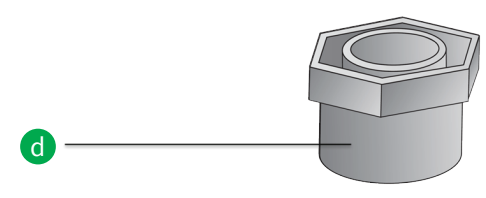
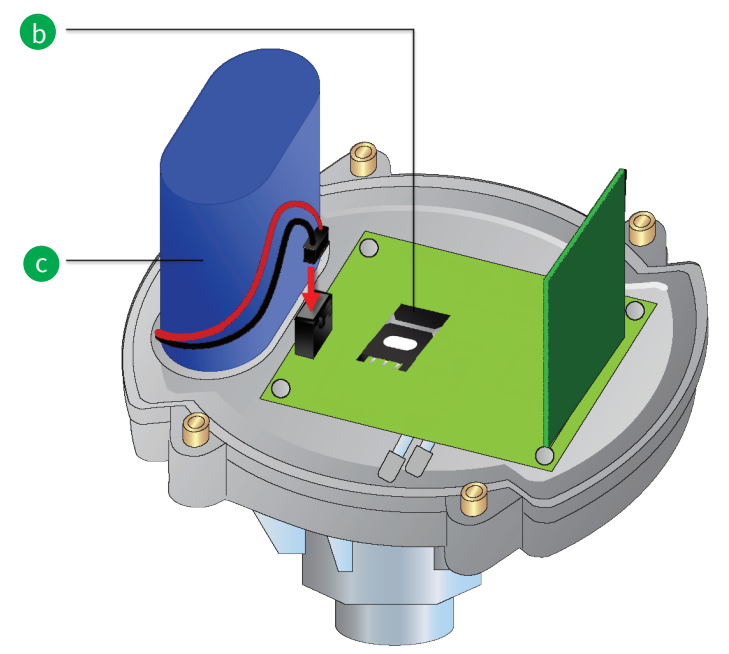
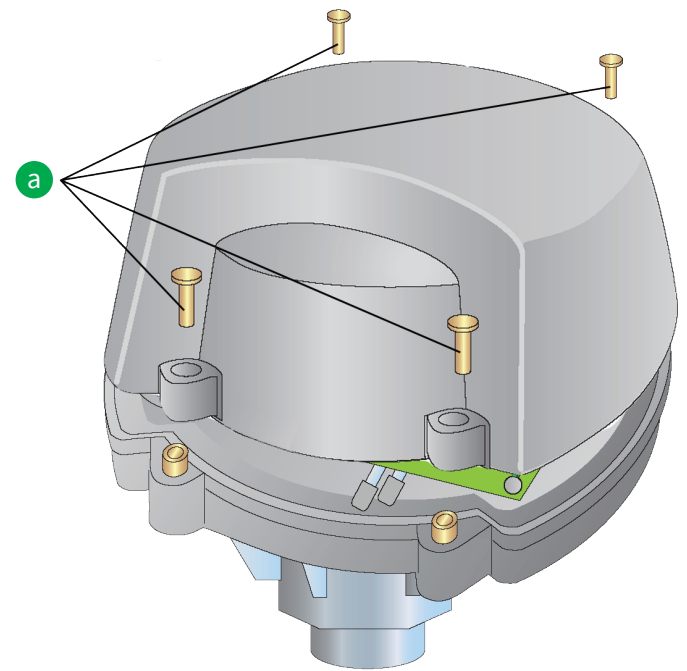


1-inch to 2-inch NPT adapter

Optional parts available through Digi:

If any item is missing or damaged, please contact your supplier. Note any damage that may have occurred during shipping and report it to the supplier.

2 Assemble the device



a Use a 9/64-inch or 3.5 mm hex key to loosen the four retaining screws and open the Connect Tank enclosure cover.

b Insert the SIM.
Note: Get an activated SIM card (standard size) from your cellular service provider.



- 1** Unlock the SIM card tray by gently pushing the metal bar toward the bottom of the tray and pulling it open.
- 2** Insert the SIM card with the metal contacts face down and the flat edge inserted into the holder.
- 3** Press the SIM card tray onto the board and close it by gently pushing the metal bar toward the top of the SIM card holder.

c Connect the battery. Make sure the battery and its wiring are properly placed.

d (Optional) Attach a 1-inch to 2-inch adapter to the bottom of the device if your tank has a 2-inch NPT threaded opening.

e Before you close the device, complete initial configuration using the command line interface (CLI); see step 3.

3 Configure the device

a Add your device to Device Cloud:

- 1** Log in to your Device Cloud account. If you do not already have one, go to <https://devicecloud.digi.com> to create your account.
- 2** Add your device using the **IMEI**. You can find the IMEI on the Connect Tank label.

b Connect a USB type A to B cable from your computer to the **Console** USB type B port on the device.

c Open a terminal program and connect to the device using the following settings:

Connection Port: COM port connected to the device

Baud rate or Bits per second: 115200

Data: 8 bit

Parity: None

Stop: 1 bit

Flow control: None

d Press the **Wake** button. The command prompt appears in the terminal program window and the device attempts to connect to the cellular network and obtain GPS location. The cellular and GPS LED slowly blinks red for an extended period of time during the first time the device performs GPS location.

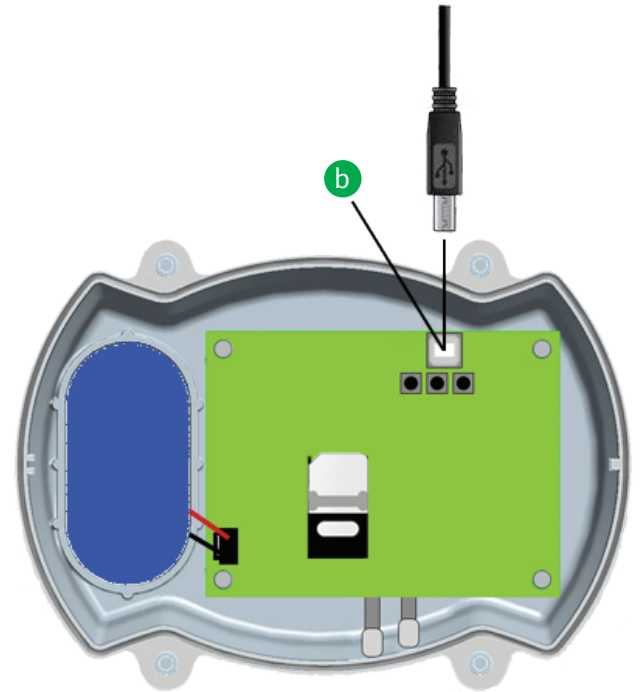
e To skip the GPS location process, press the **Wake** button again.

f At the command prompt, type `set apn=thecellular.apn` where `thecellular.apn` is the string supplied by your cellular service provider.

g Press **Enter**. The terminal program displays the APN configuration setting's current value and the pending value. The device goes to sleep and immediately wakes up to make the change. After the device completes the change it goes to sleep again.

h Press the **Wake** button and type `set` at the command prompt to make sure your change was made and that it is correct.

i Reassemble the device. **Note:** Cover screws are required as part of the safety rating. When tightening the cover screws, use a screw torque of 7 to 17 inch pounds (0.79 to 1.92 newton meters).



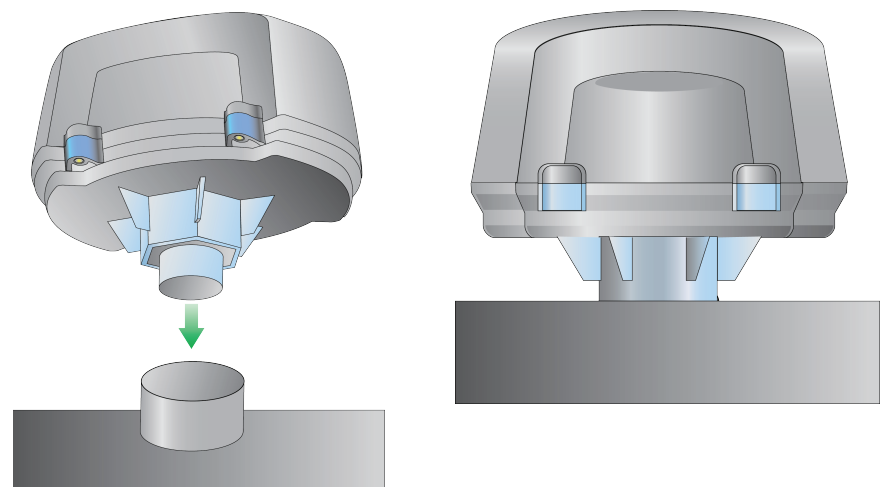
```
File Edit Setup Control Window Help
> set apn=thecellular.apn
Current Running Value: thecellular.apn
Value Pending Next Wake: thecellular.apn
>
zzz...
```

4 Install the device

You can install the Connect Tank device directly on tanks with a 1-inch NPT threaded opening. Use the optional adapter for tanks with a 2-inch NPT threaded opening.

Make sure to install the device as follows:

- The device is level (perpendicular to the liquid surface).
- There are no obstructions between the sensor and the liquid.
- The device is as close as possible to the center of the tank's diameter.



CAUTION! Mounting the device vertically ensures proper orientation. If the device is not mounted vertically, it may send incorrect readings.

The device is now ready for use. The LEDs will glow to indicate the device's status.

Connect Tank LEDs:

a **Battery LED**

Blinking red: battery life weak.

Blinking blue: battery life strong.

b **Cellular and GPS LED**

Red:

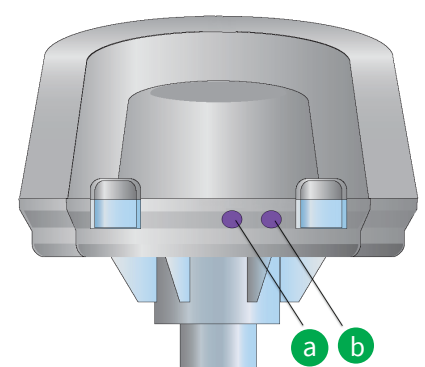
Slowly blinking: performing GPS location.

Quickly blinking: searching for the cellular network.

Blue:

Blinking: connected to the cellular network and attempting to communicate with Device Cloud.

Solid light: successfully sent data to Device Cloud; turns off after a few seconds.



5 Next steps

To learn about how Connect Tank LEDs indicate its status, make additional changes to your device, or configure Device Cloud settings, see the Digi Connect Tank v2 User Guide on www.digi.com/support.