

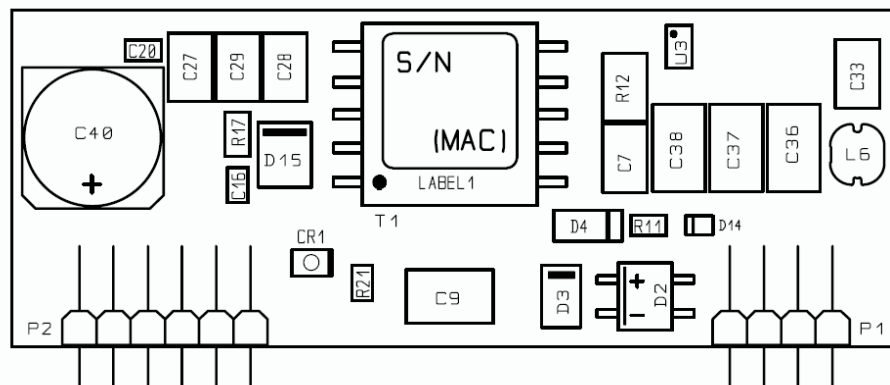


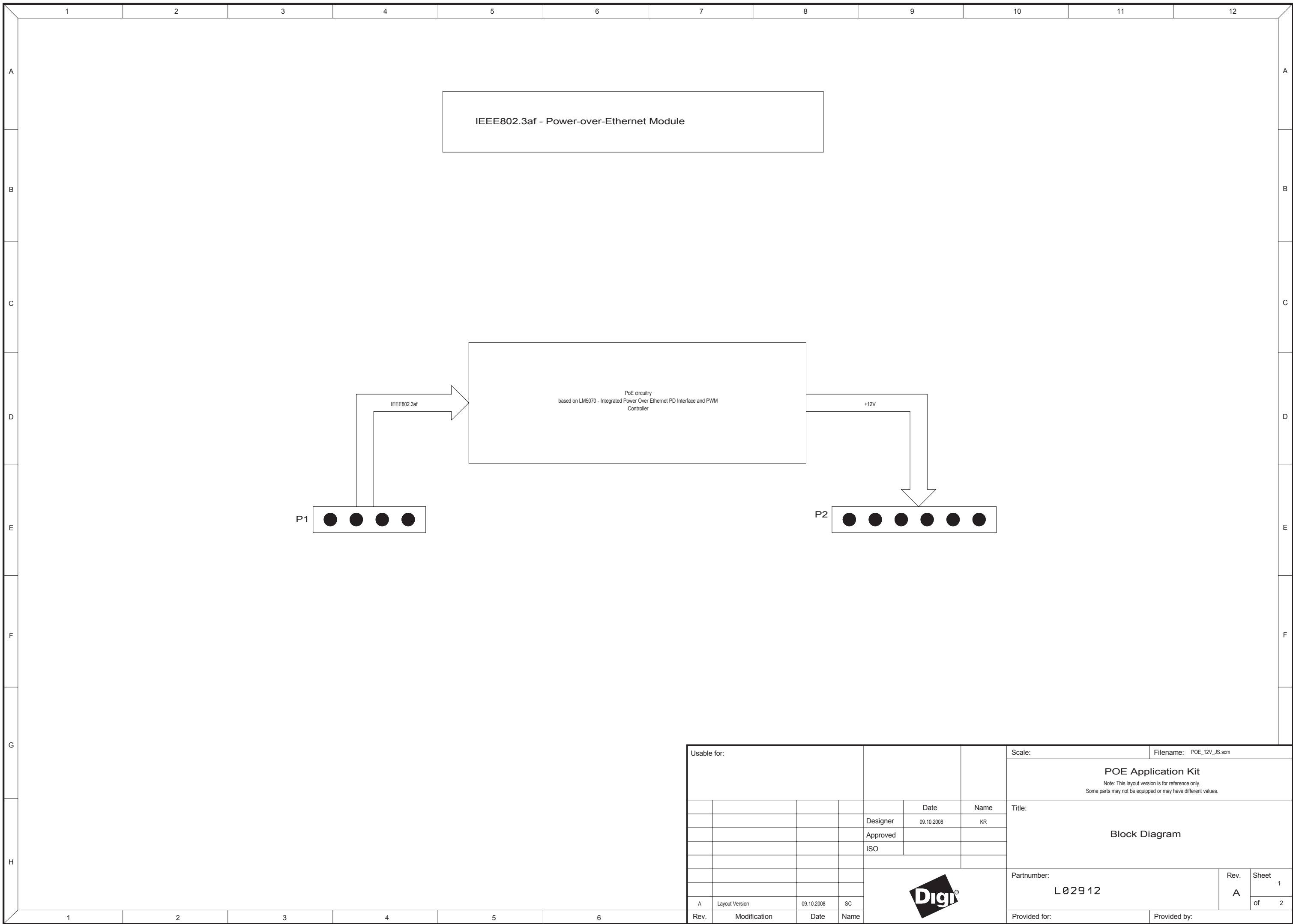
+12V PoE Application Kit  
POE\_12V\_JS\_0\_V01 / 3020


12V IEEE 802.3af PoE Application Board for Digi JumpStart Kits™

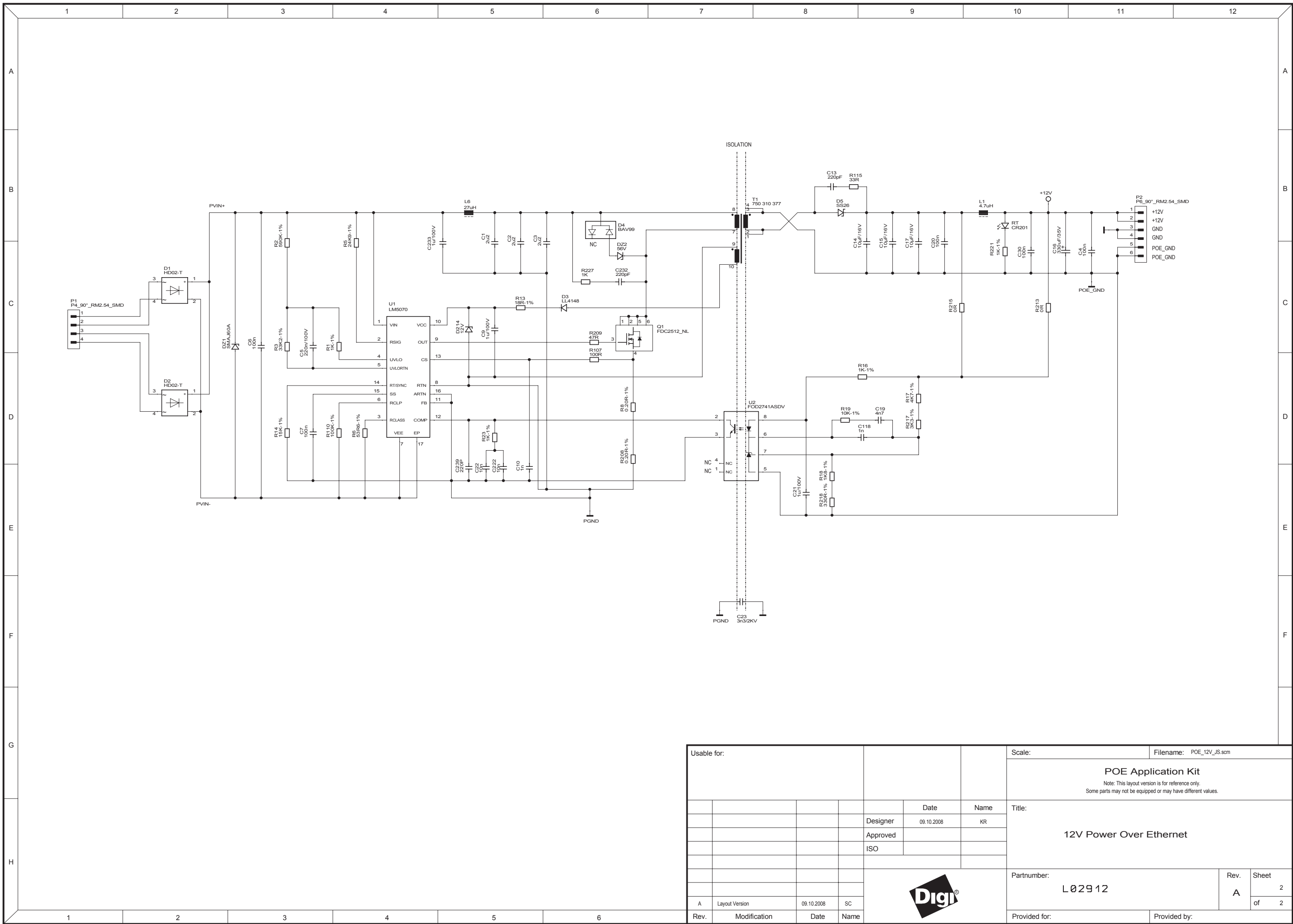
Supported Digi JumpStart Kit Development Boards  
ConnectCore™ 9P 9360, ConnectCore™ 9C, ConnectCore™ Wi-9C,  
ConnectCore™ 9P 9215, Digi Connect ME®


Supported Digi JumpStart Kit Software Platforms  
N/A

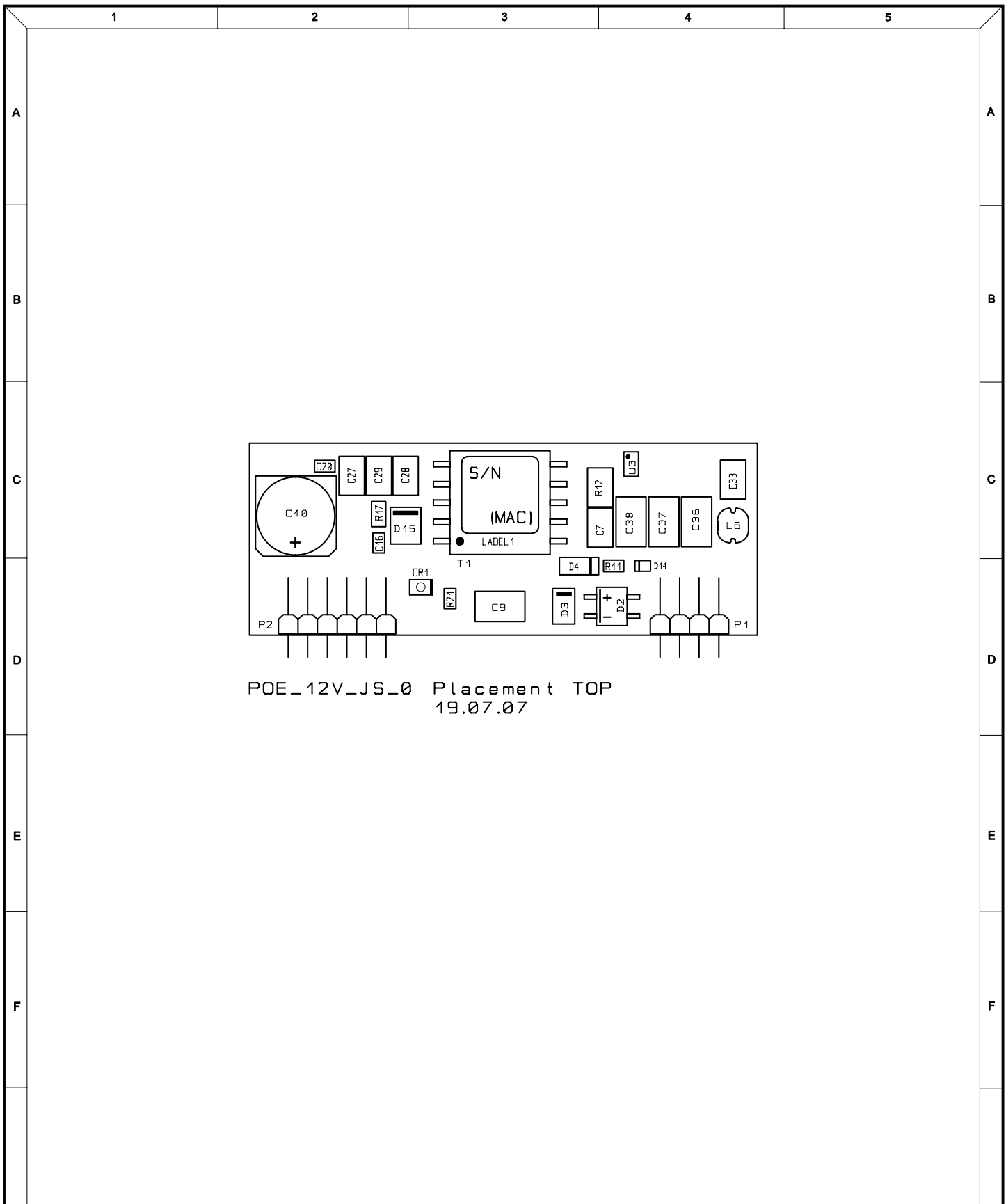





Usable for:				Scale:			Filename: POE_12V_JS.scm			
							<b>POE Application Kit</b> <small>Note: This layout version is for reference only. Some parts may not be equipped or may have different values.</small>			
					Date	Name	<b>Block Diagram</b>			
				Designer	09.10.2008	KR				
				Approved						
				ISO						
							Partnumber:		Rev.	Sheet
							<b>L 029 12</b>		<b>A</b>	<b>1</b>
A	Layout Version	09.10.2008	SC				of		2	
Rev.	Modification	Date	Name				Provided for:		Provided by:	

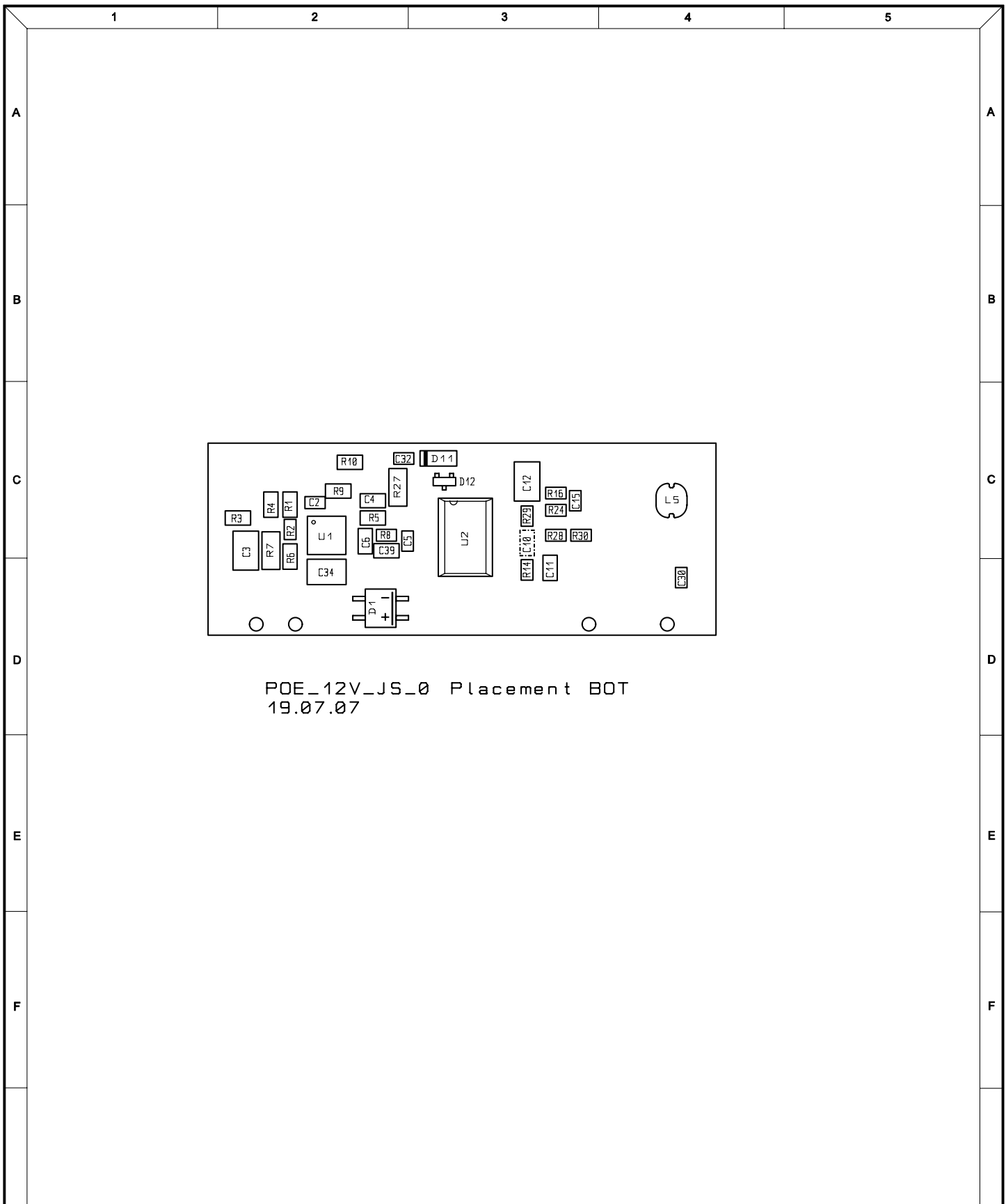


Usable for:		Scale:		Filename: POE_12V_JS.scm	
				<b>POE Application Kit</b> <small>Note: This layout version is for reference only. Some parts may not be equipped or may have different values.</small>	
		Date	Name	<b>12V Power Over Ethernet</b>	
	Designer	09.10.2008	KR		
	Approved				
	ISO				
				Partnumber:	Rev.
				L02912	A
Rev.		Modification	Date	Name	Sheet
					2
				of	2
Provided for:				Provided by:	




POE\_12V\_JS\_0 Placement TOP  
19.07.07

Usable for:				Scale:		Filename: POE_12V_JS_0.pcb		
				POE_12V_JS_0 V01/3020 12V PoE Application Module for JumpStart development boards				
				<b>Designer</b>	<b>Date</b>	<b>Name</b>	<b>Title:</b>  Placement TOP Side	
				SC	14.03.2008			
				<b>Approved</b>				
				<b>ISO</b>				
							<b>Partnumber:</b> L02912	<b>Sheet</b> 1
							<b>Provided for:</b>	<b>Provided by:</b>
<b>Rev.</b>	<b>Modification</b>	<b>Date</b>	<b>Name</b>					



POE\_12V\_JS\_0 Placement BOT  
19.07.07

Usable for:				Scale:		Filename: POE_12V_JS_0.pcb	
				POE_12V_JS_0 V01/3020 12V PoE Application Module for JumpStart development boards			
				<b>Designer</b>	14.03.2008	<b>Name</b>	SC
				<b>Approved</b>		<b>Title:</b>	
				<b>ISO</b>		Placement TOP Side	
						<b>Partnumber:</b>	<b>Sheet</b>
						L02912	2
<b>Rev.</b>	<b>Modification</b>	<b>Date</b>	<b>Name</b>	<b>Provided for:</b>		<b>Provided by:</b>	
						of 2	

8

9

10

11

12

A

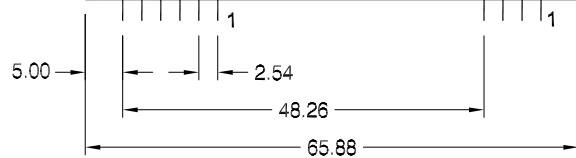
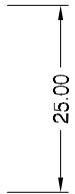
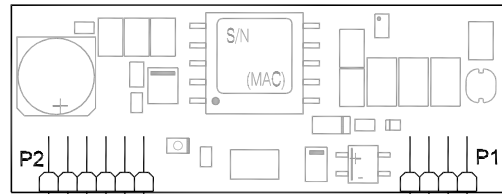
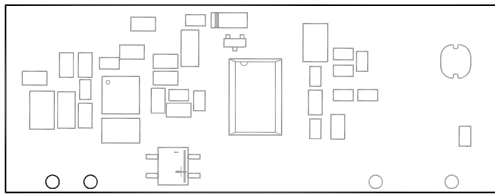
A

B

B

BOTTOM View

TOP View



All rights reserved © Digi International Inc.

D

D

E

E

F

F

Usable for:							Scale: 1:1	Filename: POE_12V_JS_0_mech.dwg
							12V PoE Application Module	
				Draw.	Date	Name	Title:  <b>Dimensions Module</b>	
				Appr.	14.03.08	SC		
				Stand.				
							Partnumber:	Sheet
Rev.	Modification	Date	Name				Provided for:	of
								1
							Provided by:	