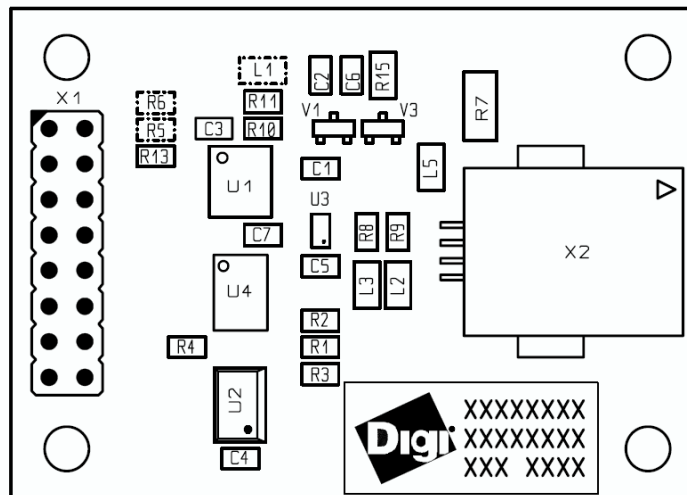


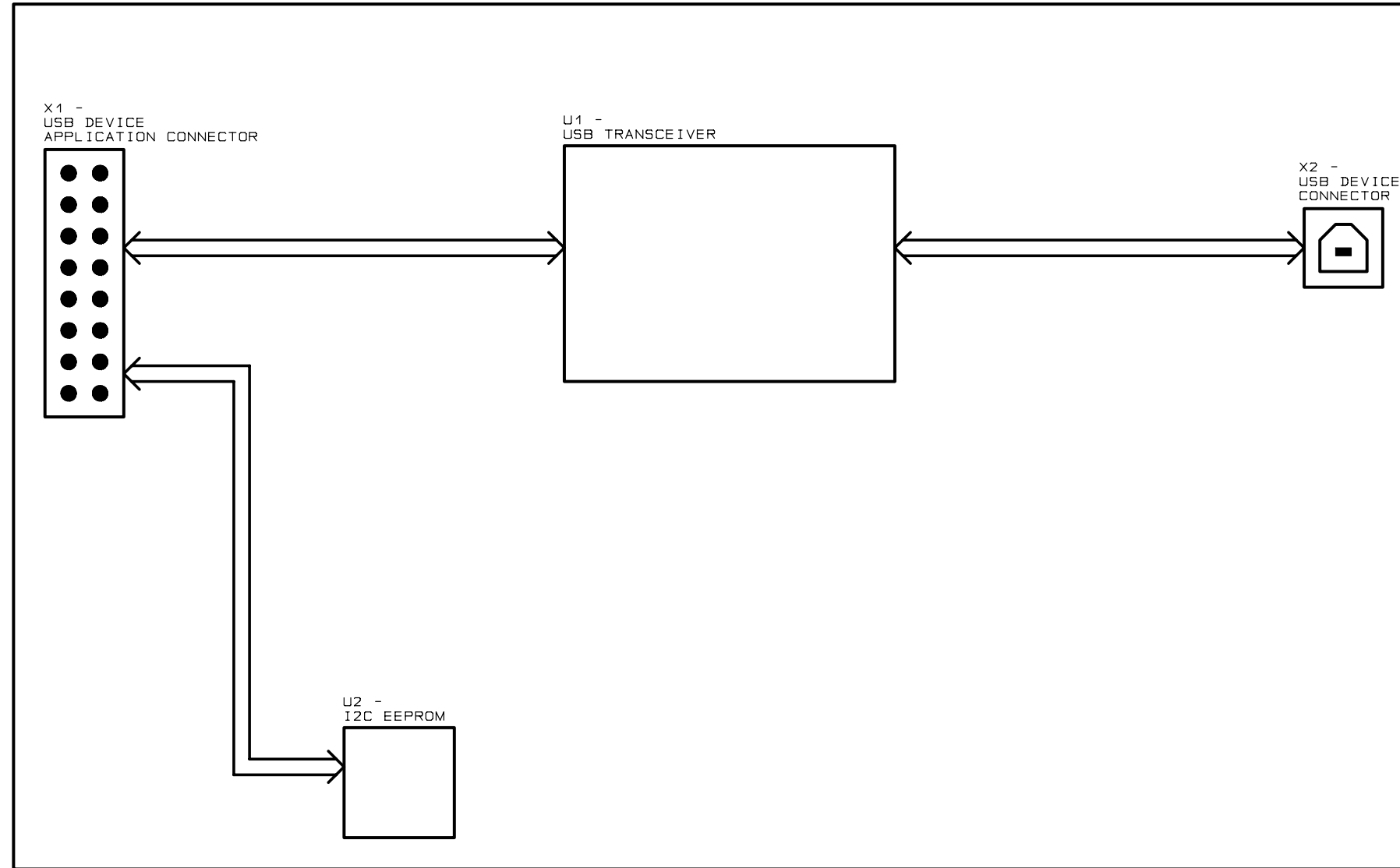


USBDEV\_JS\_0\_V01 / 3019

USB-Device Application Board for JumpStart ConnectCore 9C/Wi-9C and ConnectCore 9P 9360



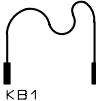
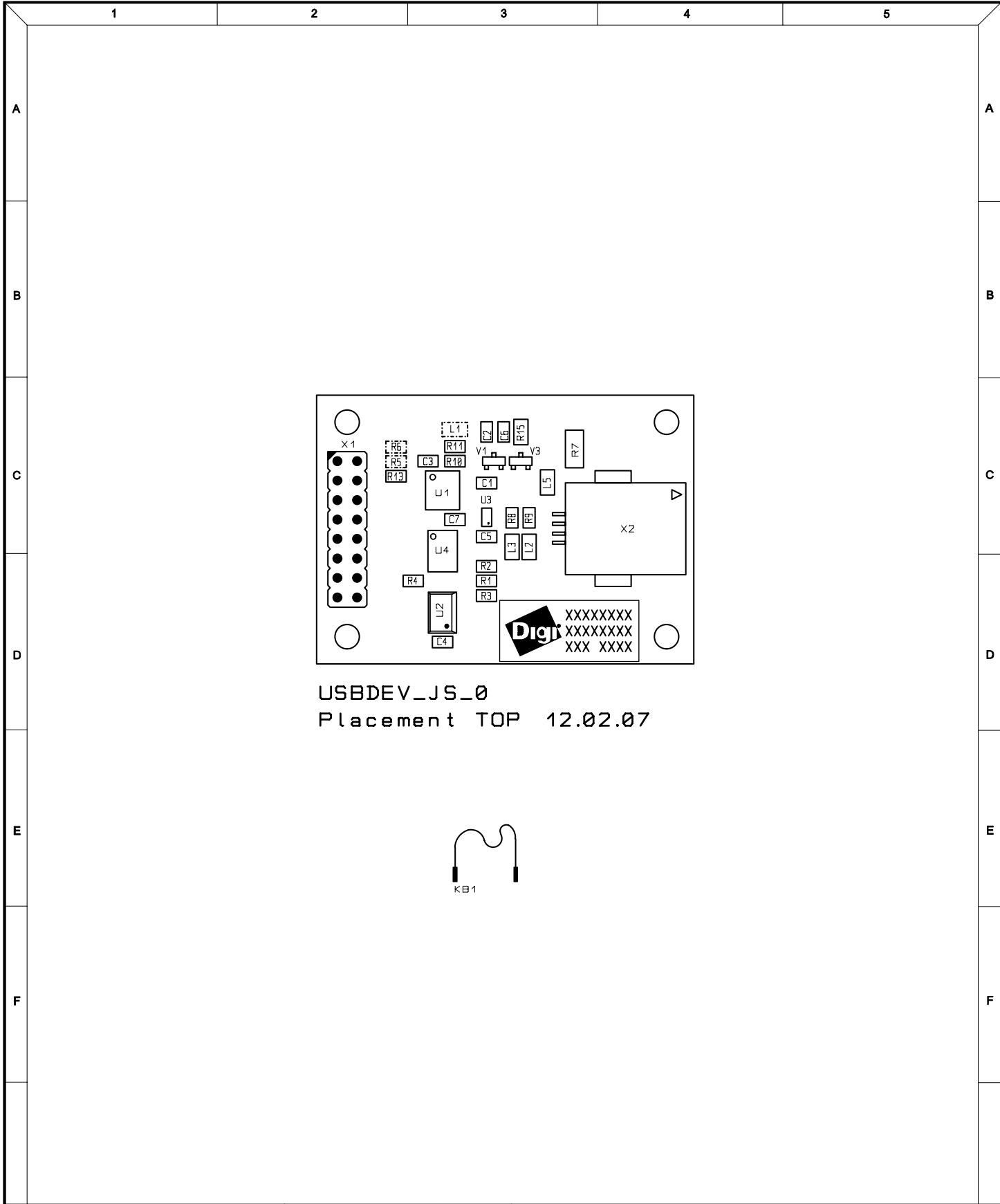
BLOCK DIAGRAM : USB-Device Application Board for  
JumpStart ConnectCore 9C/Wi-9C and ConnectCore 9P 9360



All rights reserved © Digi International Inc.

Usable for:				Scale:			Filename: USBDEV_JS_0.scm	
				USBDEV_JS_0				
				V01/3019				
				USB-Device Application Board for JumpStart ConnectCore 9C/Wi-9C and ConnectCore 9P 9360				
				<b>Designer</b>	<b>Date</b>	<b>Name</b>	<b>Title:</b>	
					12.02.07	MS	USB-Device Application Board -	
				<b>Approved</b>			Bloc Diagram	
				<b>ISO</b>				
							<b>Partnumber:</b>	<b>Sheet</b>
							L02906	1
							<b>of</b>	2
<b>Rev.</b>	<b>Modification</b>	<b>Date</b>	<b>Name</b>	<b>Provided for:</b>			<b>Provided by:</b>	





Usable for:						Scale:		Filename: USBDEV_JS_0.pcb	
						USBDEV_JS_0 V01/3019 <small>USB-Device Application Board for JumpStart ConnectCore 9C/Wi-9C and ConnectCore 9P 9360</small>			
				Designer	Date	Name	<b>Placement TOP Side</b>		
				Approved	12.02.07	SC			
				ISO					
						Partnumber:		Sheet	
						L02906		1	
								of 1	
Rev.	Modification	Date	Name			Provided for:		Provided by:	

