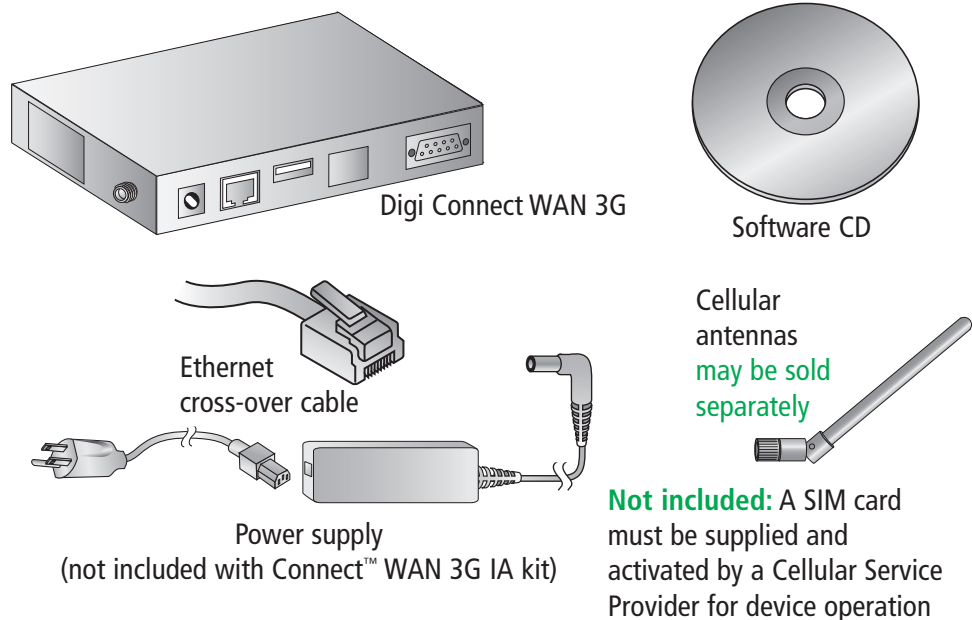


1 Verify kit contents



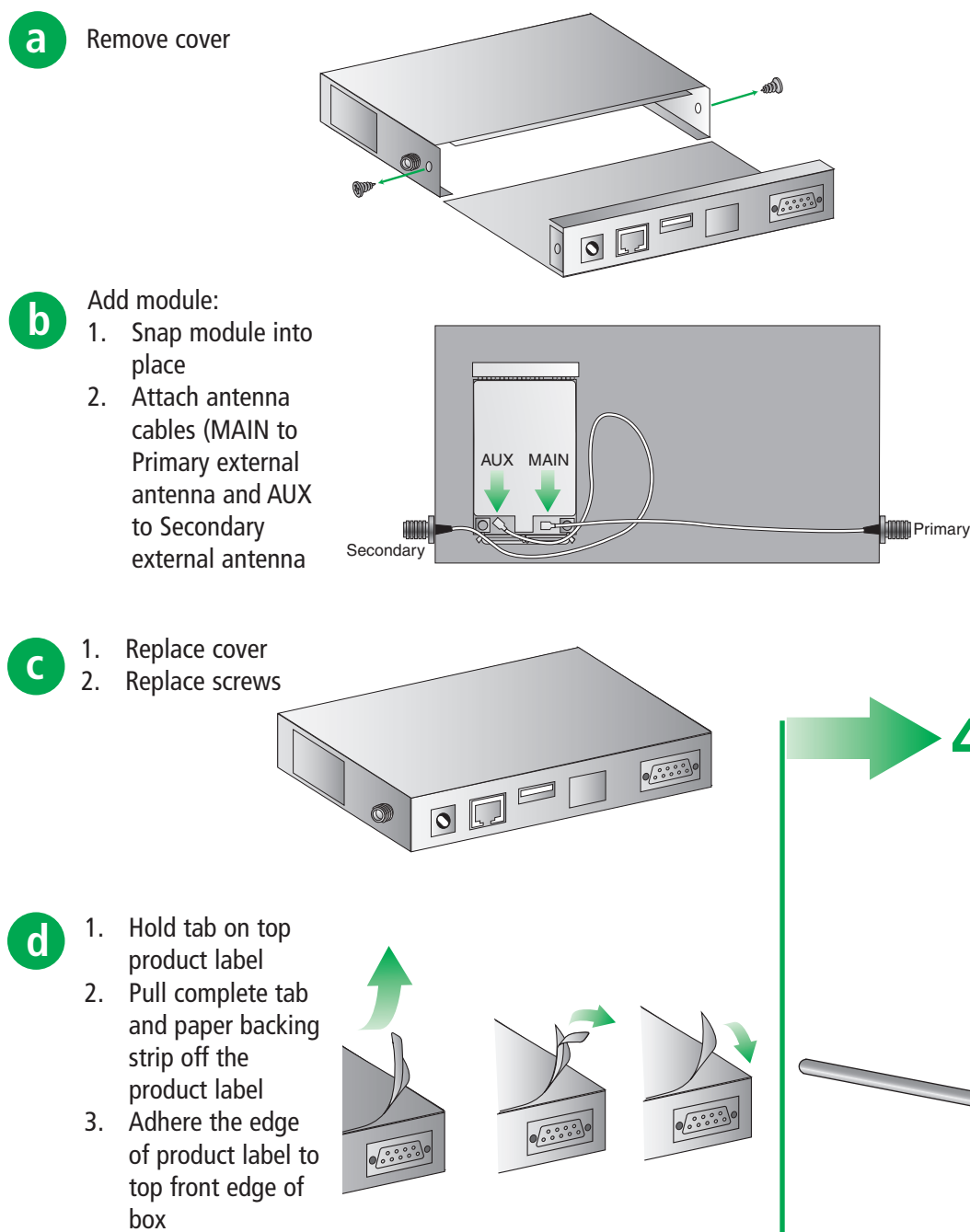
Quick Start Guide

Digi Connect™ WAN 3G
Digi Connect™ WAN 3G IA

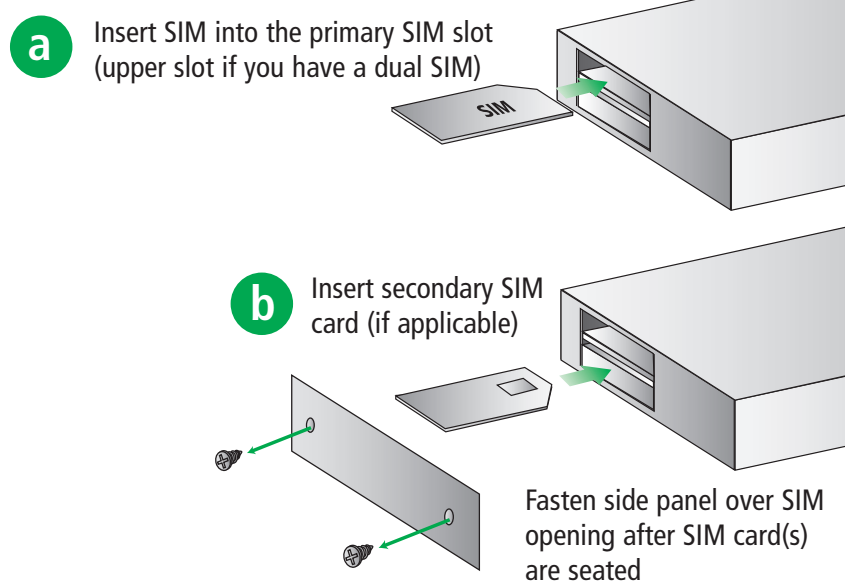


PN (1P): 90000911-88 B

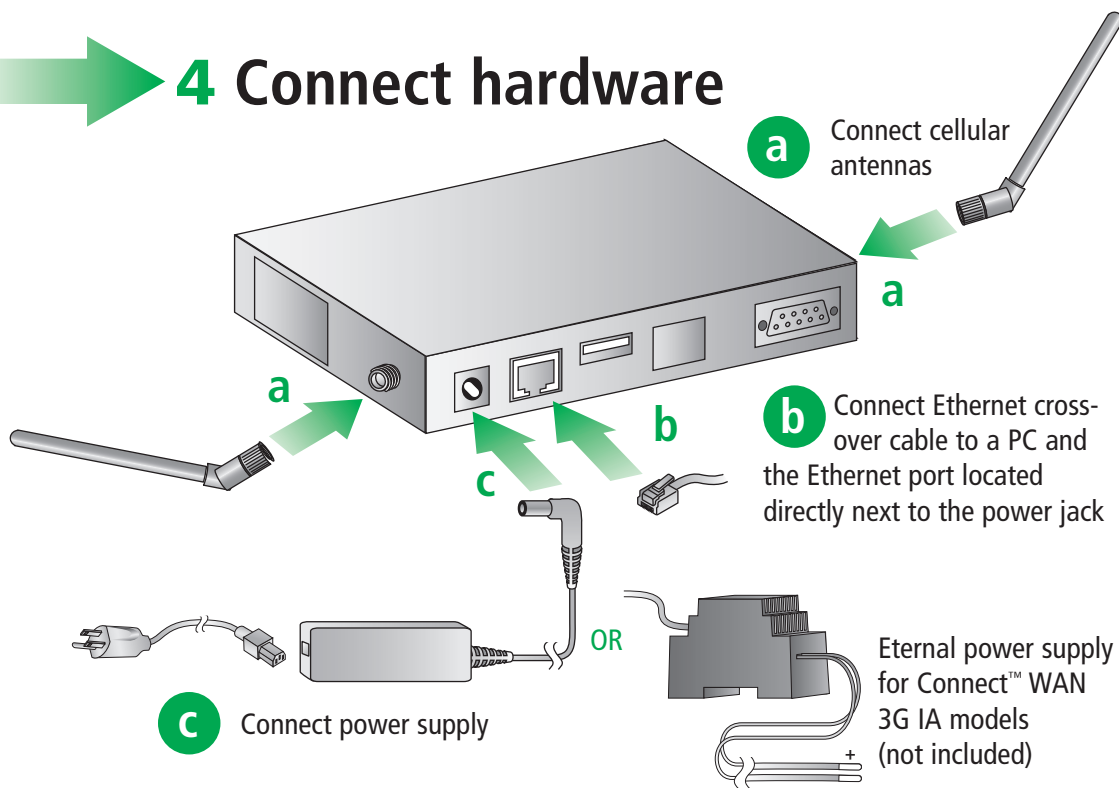
2 Install PC card or module



3 Insert SIM card (Only with GSM module)



4 Connect hardware



5 Configure your cellular settings

- a** Open your web browser and enter the IP address 192.168.1.1 in the URL address bar
- b** Under Configuration, click "Mobile." Enter your service provider name and connection parameters and click "Apply"

Your device is now configured. If you would like to verify your connections go to step 6

NOTE: If you have difficulty discovering your device, make sure your host computer is set up to obtain IP addresses automatically (DHCP server is enabled by default on the device). Also ensure all firewall software is temporarily disabled

6 Validate Internet connection

- a** Disconnect the Ethernet cross-over cable and reconnect it. This will re-establish the Ethernet connection by assigning a new IP address through the DHCP server
- b** To verify your Internet connection, enter a website of your choice (e.g. www.digi.com) in the URL address bar of your browser and click "enter." Connecting to a website indicates the connection is working

For additional information about your cellular connection, click System Information > Mobile or reference the User's Guide provided on the enclosed CD