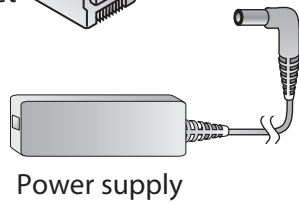
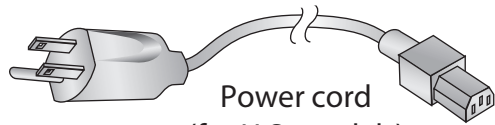
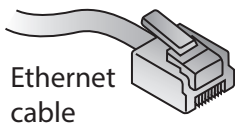
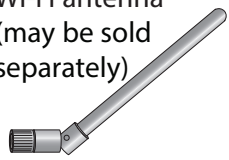
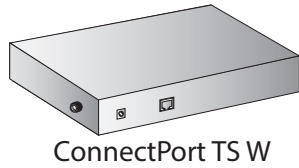


1 Verify Kit Contents

Wi-Fi antenna
(may be sold
separately)



Products



Quick Start Guide ConnectPort™ TS MEI W



90000884-88 B

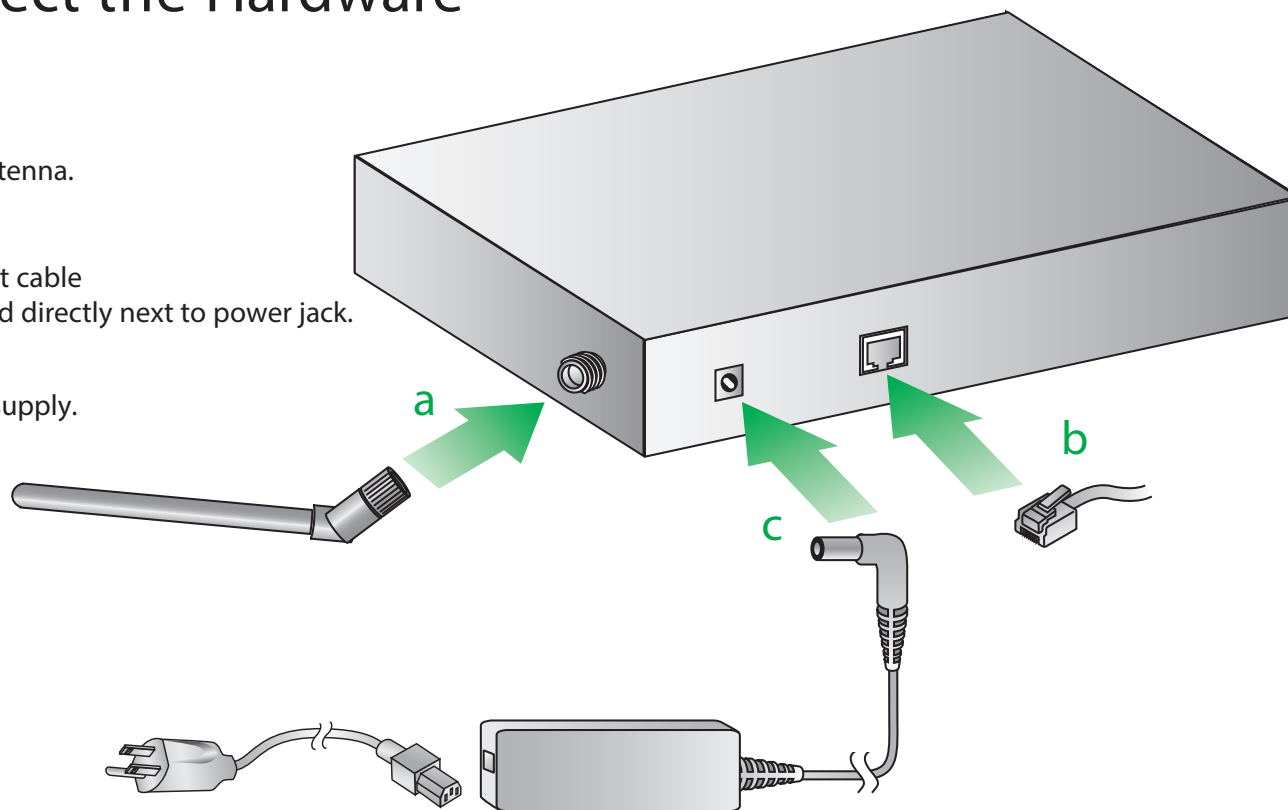
2 Set up the Serial Port

The Connect Port TS MEI settings are configured through software. Complete this Quick Start Guide and go to the [Digi Connect Family and ConnectPort TS Family User's Guide](#) for the procedure to configure the MEI ports. The ports are set to EIA-232 by default. If your device is not EIA-232, configure the MEI settings before attaching your device to the Digi Connect TS product. The default settings will not harm your device. However, we recommend configuring the MEI settings immediately as a precaution.

| RJ-45 PIN | EIA-232 | EIA-422/485 Full-Duplex | EIA-485 Half-Duplex |
|--------------|---------|----------------------------|------------------------|
| 1 | RI | TxD- | TxD- |
| 2 | DSR | RxD- | RxD- |
| 3 | RTS | RTS+ | n/a |
| 4 | GND | GND | GND |
| 5 | TxD | TxD+ | TxD+ |
| 6 | RxD | RxD+ | RxD+ |
| 7 | SG | SG | SG |
| 8 | CTS | CTS+ | n/a |
| 9 | DTR | RTS- | n/a |
| 10 | DCD | CTS- | n/a |

3 Connect the Hardware

- Connect the Wi-Fi antenna.
- Connect the Ethernet cable (if applicable), located directly next to power jack.
- Connect the power supply.



4 Download the Software

- Navigate to www.digi.com/support/productdetail?pid=3100 and click the Drivers tab to download the Realport software required for configuration. After you select your appropriate operating system (OS), the installation pop-up appears on your screen.
- Navigate to www.digi.com/support/productdetail?pid=3100 and click the Diagnostics, Utilities, and MIBs tab. Select your OS and download either the Digi Discovery Utility, or the DPA utility. This is a utility software that will allow you to discover the devices present in your network. Select the appropriate operating system (OS), then download the utility and run it.

Congratulations!

Your Digi device is now configured. This Quick Start Guide and all required documents, including the Digi Connect® Family and ConnectPort® TS Family User's Guide are available at:
www.digi.com/support/productdetail?pid=3100.