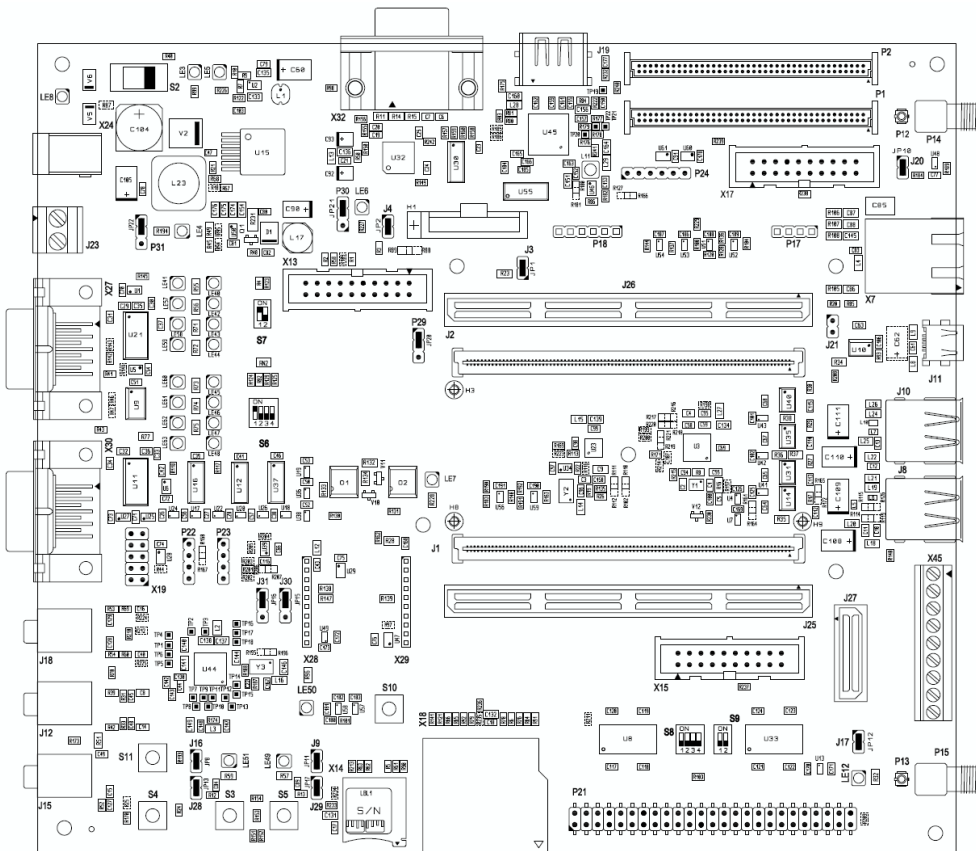




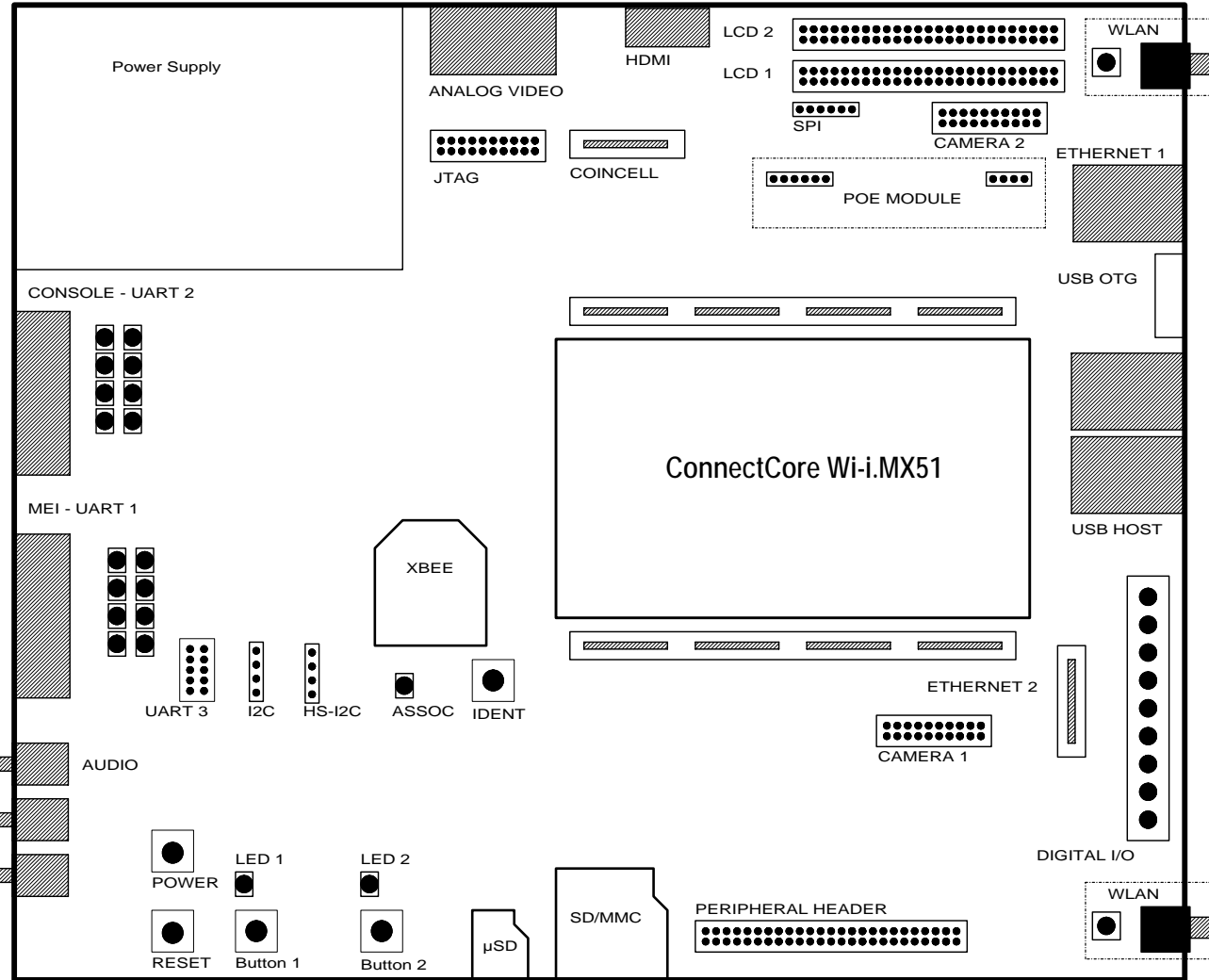
55001488-02 RevA

ConnectCore Wi-i.MX 51 JumpStart Board

3xUART, XBee, 4xUSB Host, USB OTG,
2xEthernet, 2xLCDs, 2xCamera, 2xSDIO, HDMI, AUDIO



ConnectCore Wi-i.MX51 JumpStart board

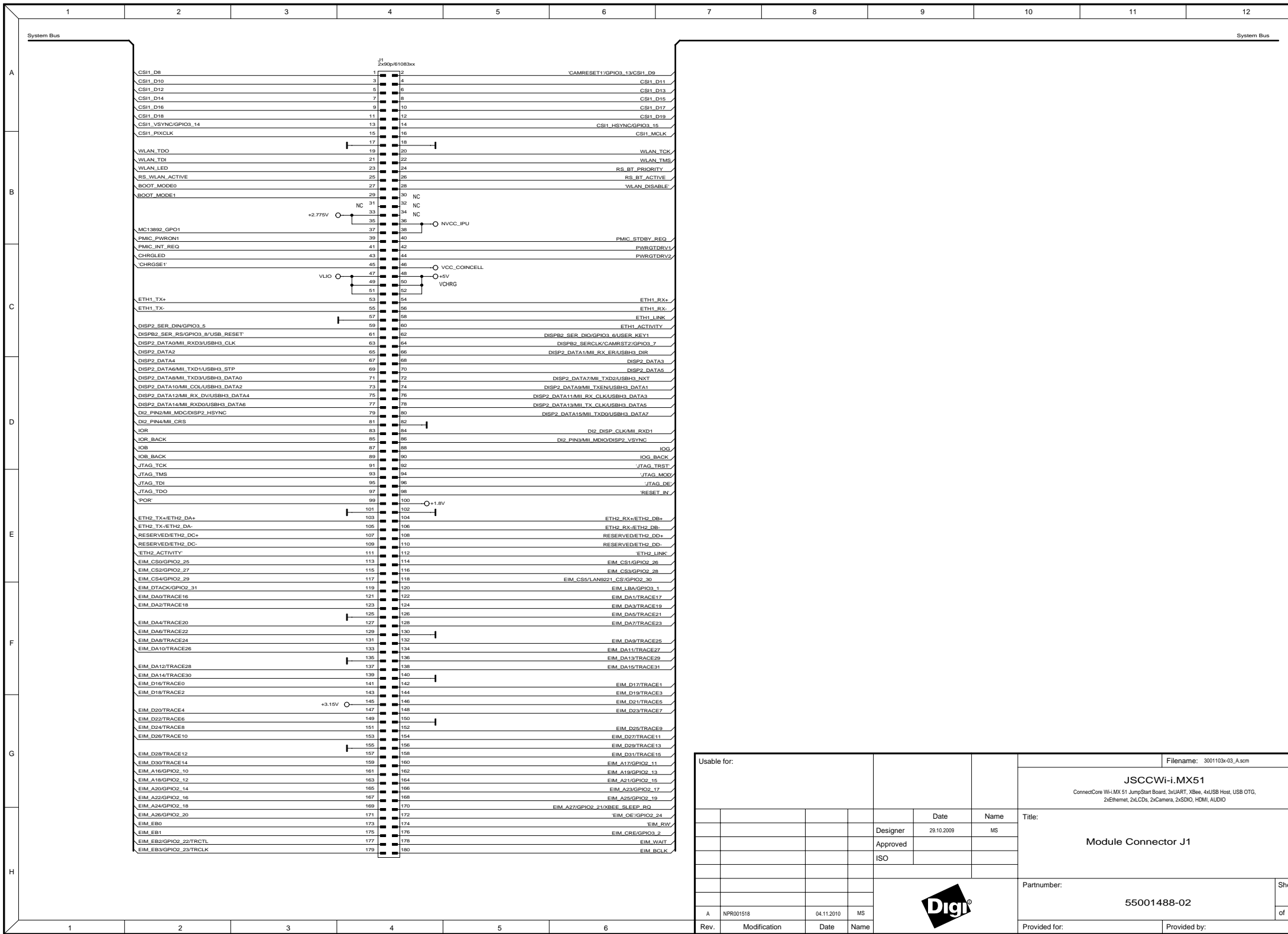


© Digi International Inc.

Usable for:				Date		Name		Filename: 3001103v-03_A.scm	
				Designer		MS		Title:	
				Approved				Block Diagram	
				ISO				Partnumber:	
								55001488-02	
A				NPR001518		04.11.2010		MS	
Rev.				Modification		Date		Name	
								Provided for:	
								Provided by:	
								Sheet 1 of 15	



All rights reserved
© Digi International Inc.



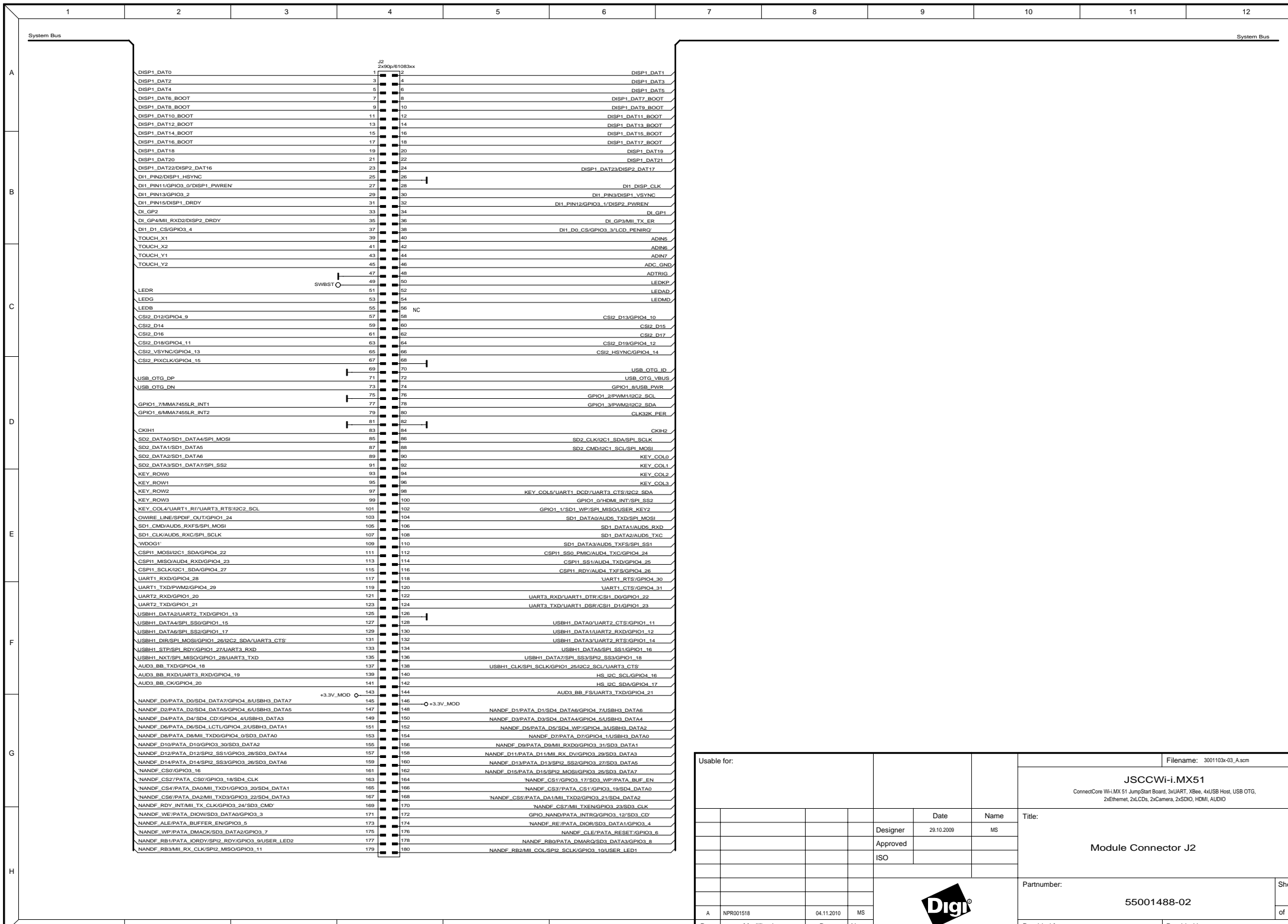
Usable for:				Date		Name		Title:	
				29.10.2009		MS		Module Connector J1	
				Approved				Partnumber:	
				ISO				55001488-02	
								Sheet 2 of 15	
Rev.				Modification		Date		Name	
A				NPR001518		04.11.2010		MS	
								Provided for:	
								Provided by:	



Filename: 3001103r-03_A.scm

JSCCW-i.MX51

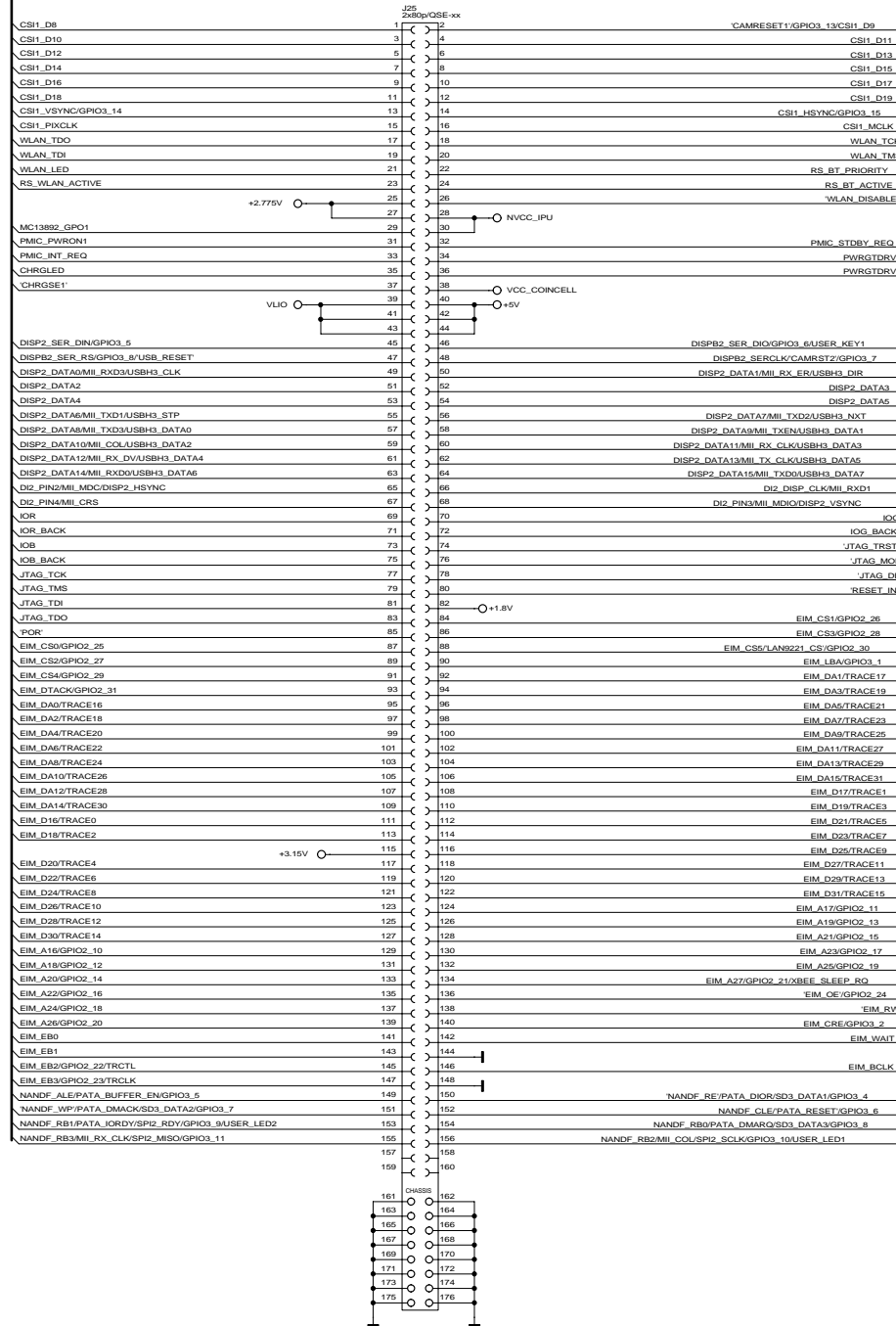
ConnectCore Wi-i.MX 51 JumpStart Board, 3xUART, Xbee, 4xUSB Host, USB OTG, 2xEthernet, 2xLCDs, 2xCamera, 2xSDIO, HDMI, AUDIO



Usable for:				Filename: 3001103x-03_A.scm	
				JSCCWi-i.MX51	
				ConnectCore Wi-i.MX51 JumpStart Board, 3xUART, Xbee, 4xUSB Host, USB OTG, 2xEthernet, 2xLCDs, 2xCamera, 2xSDIO, HDMI, AUDIO	
		Date	Name	Title: Module Connector J2	
		29.10.2009	MS		
		Approved	ISO		
				Partnumber: 55001488-02	
				Sheet 3 of 15	
Rev.	Modification	Date	Name	Provided for:	
A	NPR001518	04.11.2010	MS	Provided by:	

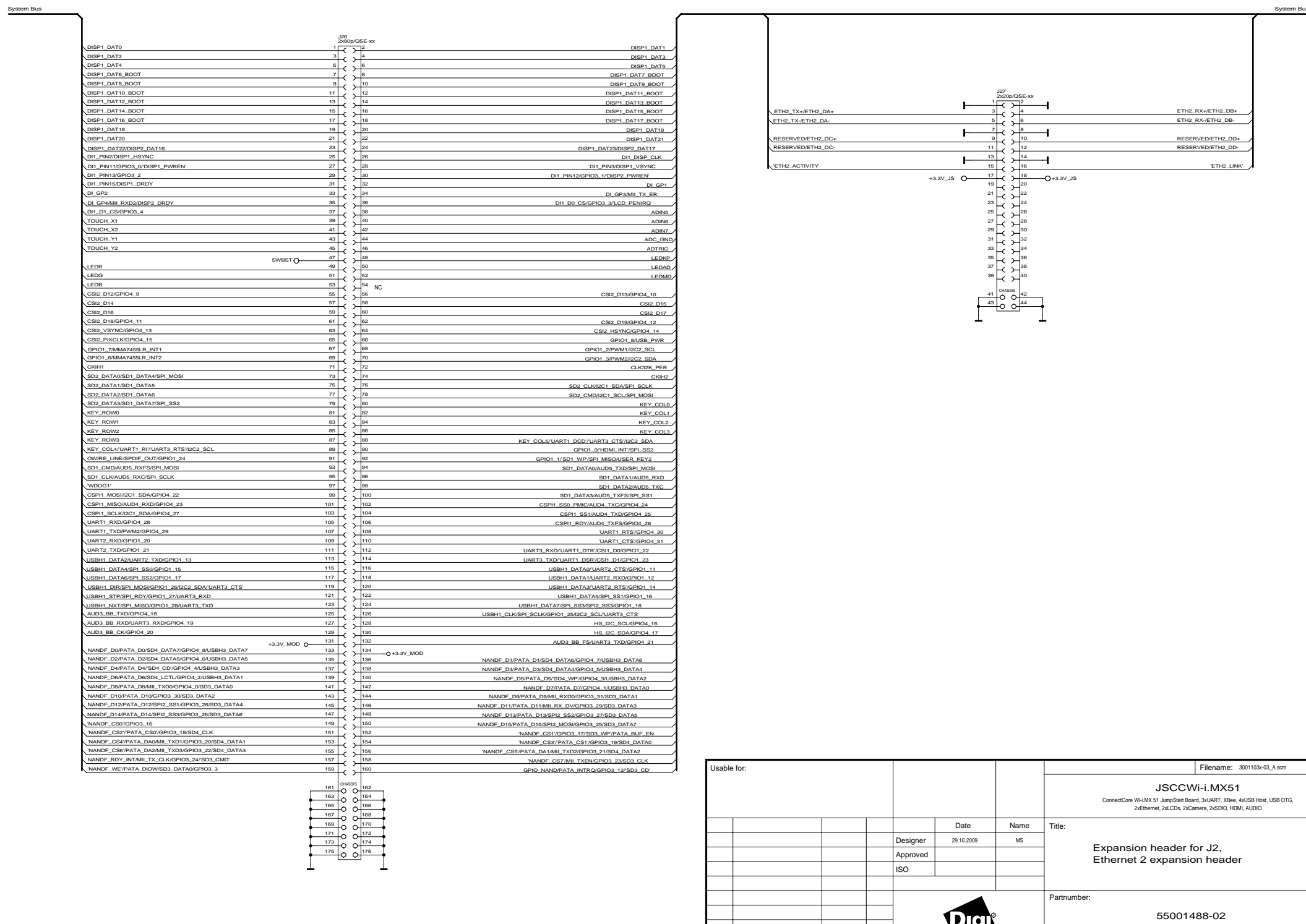


All rights reserved
© Digi International Inc.



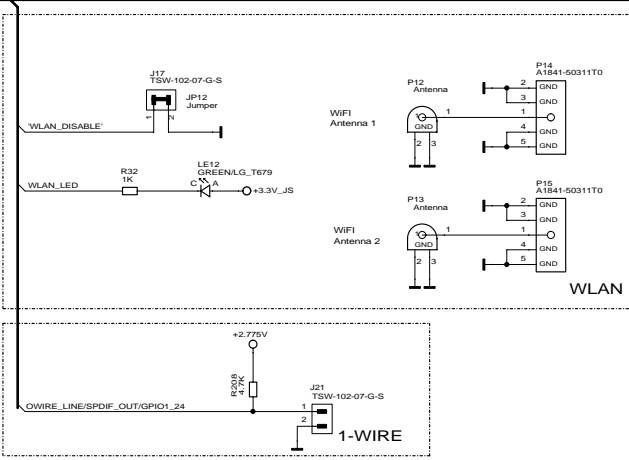
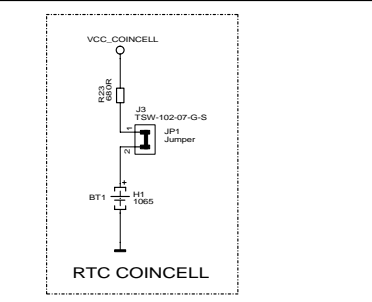
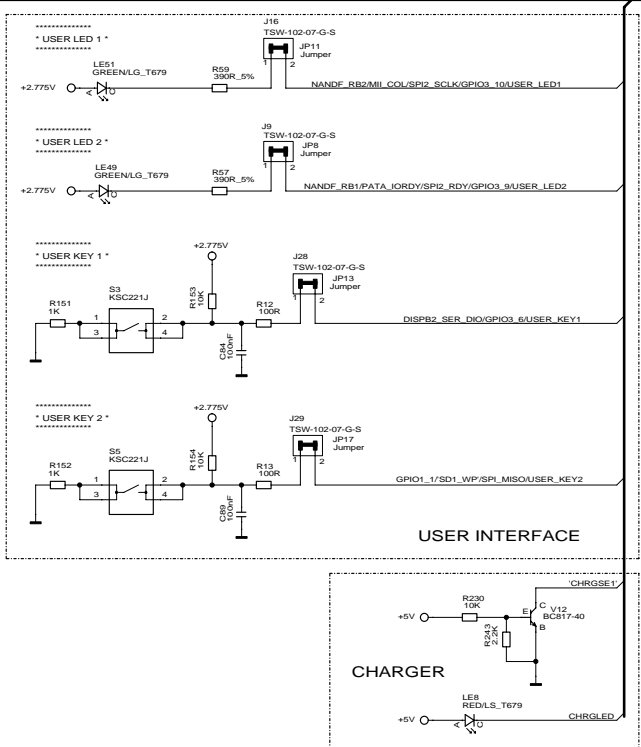
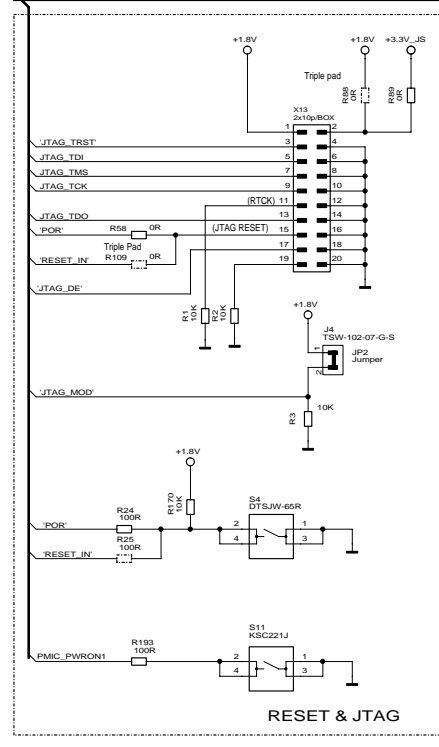
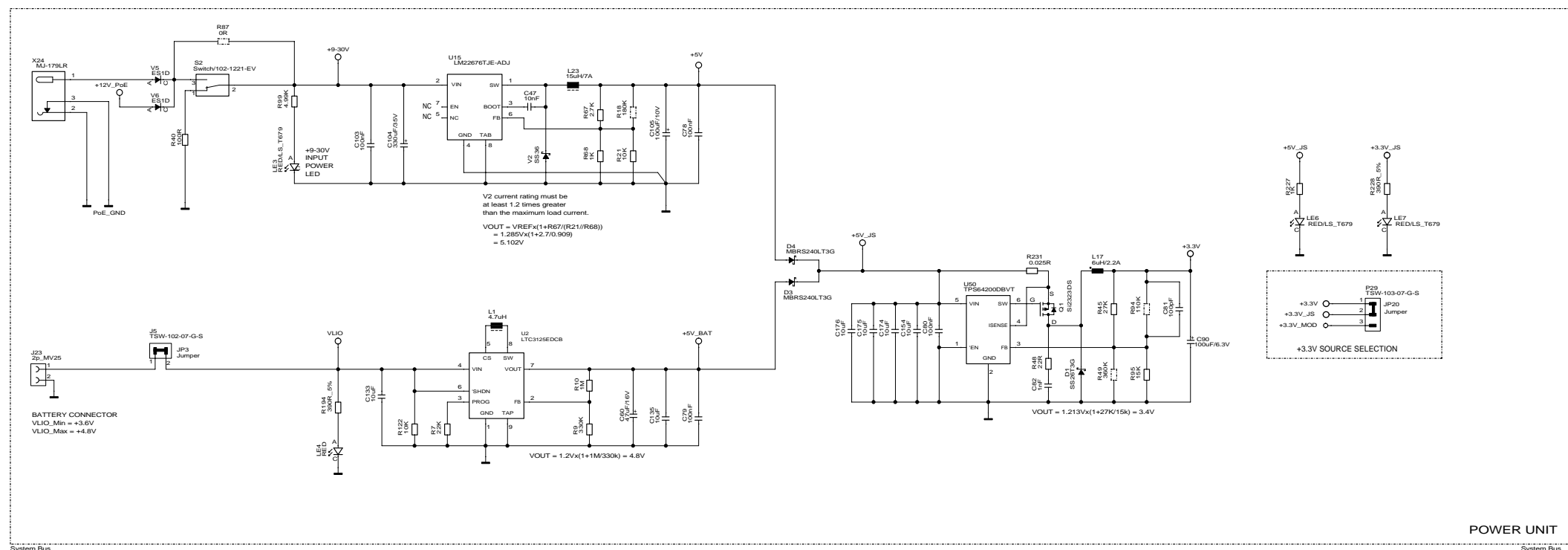
Usable for:				Filename: 3001103x-03_A.scm		
				JSCCW-i.MX51 ConnectCore Wi-i.MX 51 JumpStart Board. 3xUART, Xbee, 4xUSB Host, USB OTG, 2xEthernet, 2xLCDs, 2xCamera, 2xSDIO, HDMI, AUDIO		
				Title: Expansion header for J1		
				Designer: MS	Date: 29.10.2009	Name: MS
				Approved: ISO		
				Partnumber: 55001488-02		
				Sheet 4 of 15		
Rev. A	NPR001518	04.11.2010	MS			
Modification		Date	Name			
Provided for:				Provided by:		

All rights reserved © Digi International Inc.



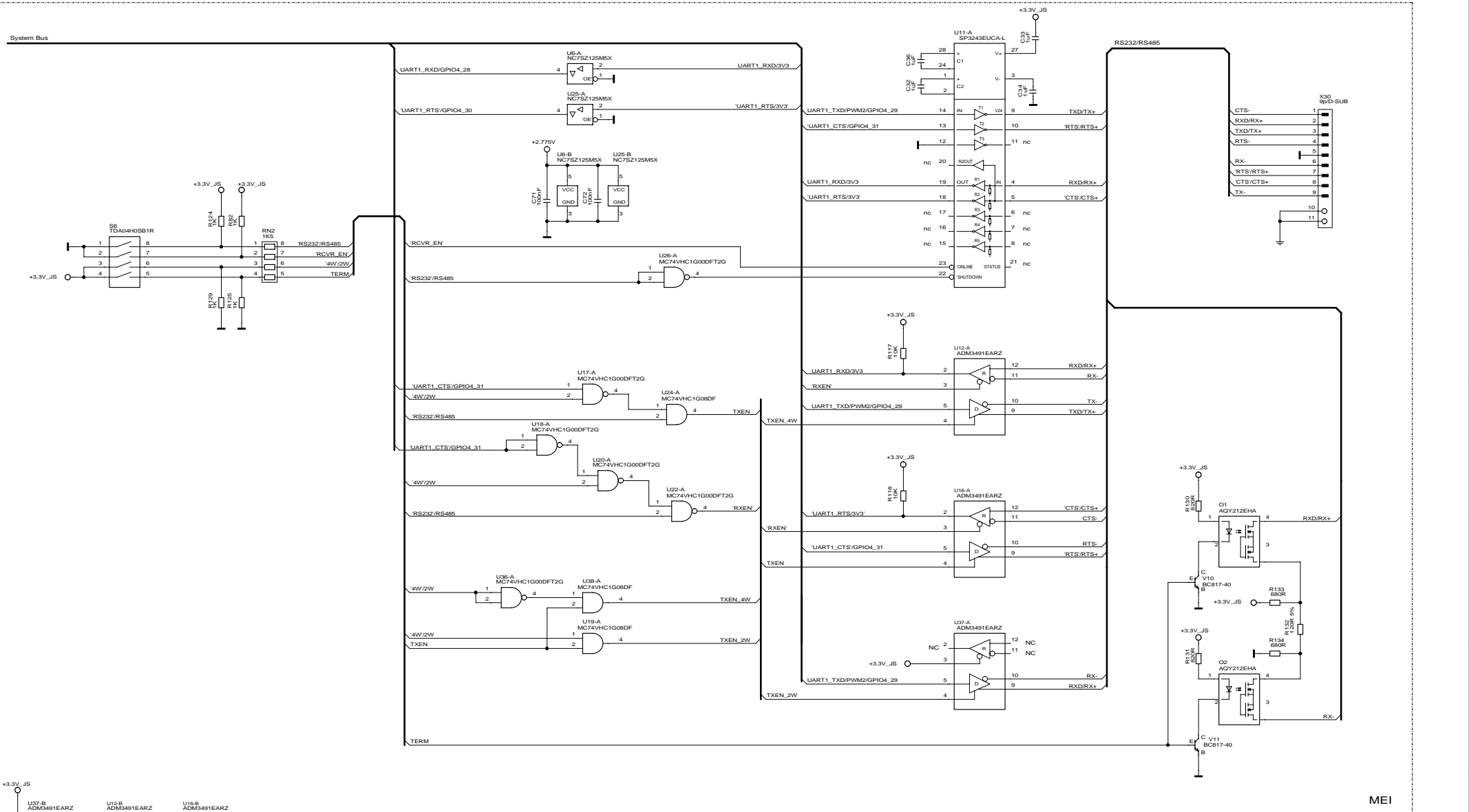
Usable for:				Filename: 3001103x-03_A.scm	
				JSCCW-i.MX51 ConnectCore Wi-i.MX51 JumpStart Board, 3xUART, Xbee, 4xUSB Host, USB OTG, 2xEthernet, 2xLCDs, 2xCamera, 2xSDIO, HDMI, AUDIO	
				Title: Expansion header for J2, Ethernet 2 expansion header	
				Partnumber: 55001488-02	
				Sheet 5 of 15	
				Provided for: _____ Provided by: _____	
Rev.	Modification	Date	Name		
A	NPR001518	04.11.2010	MS		



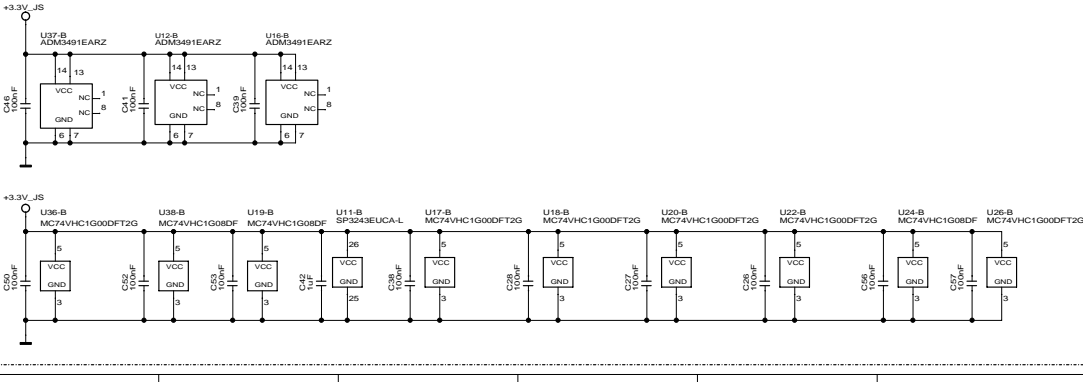


Usable for:				Filename: 3001103x-03_A.scm	
				JSCCW-i.MX51 ConnectCore Wi-i.MX 51 JumpStart Board, 3xUART, XBeec, 4xUSB Host, USB OTG, 2xEthernet, 2xCAMs, 2xSDIO, HDMI, AUDIO	
		Date	Name	Title:	
		29.10.2009	MS	Power supply, RTC Coincell, JTAG User interface, 1-Wire, WLAN conn	
		Designer		Partnumber:	
		Approved		55001488-02	
		ISO		Sheet 6	
				of 15	
Rev.	Modification	Date	Name	Provided for:	Provided by:
A	NPR001518	04.11.2010	MS		

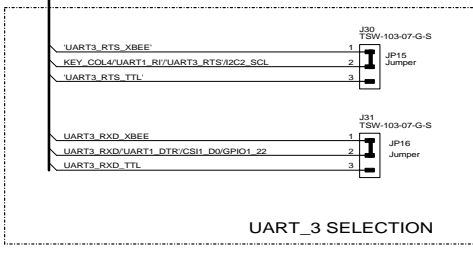
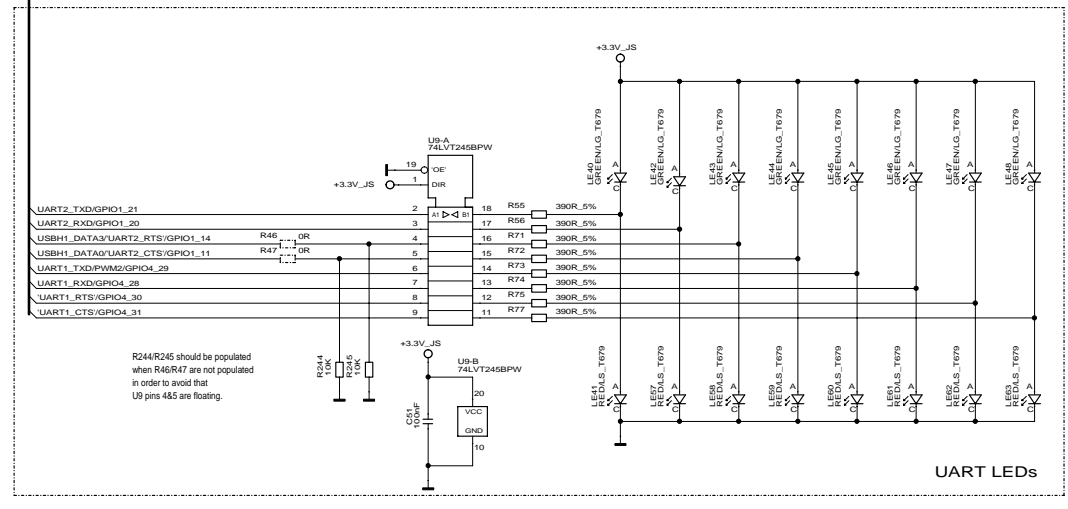
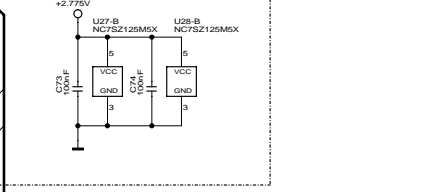
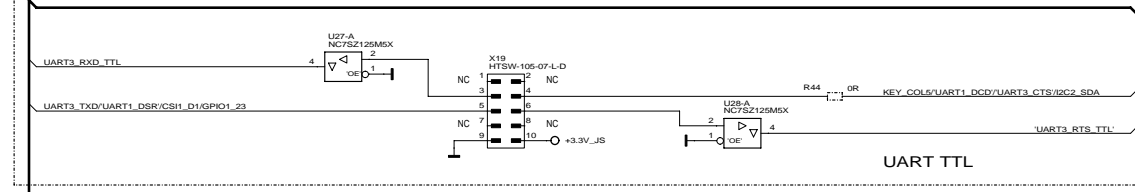
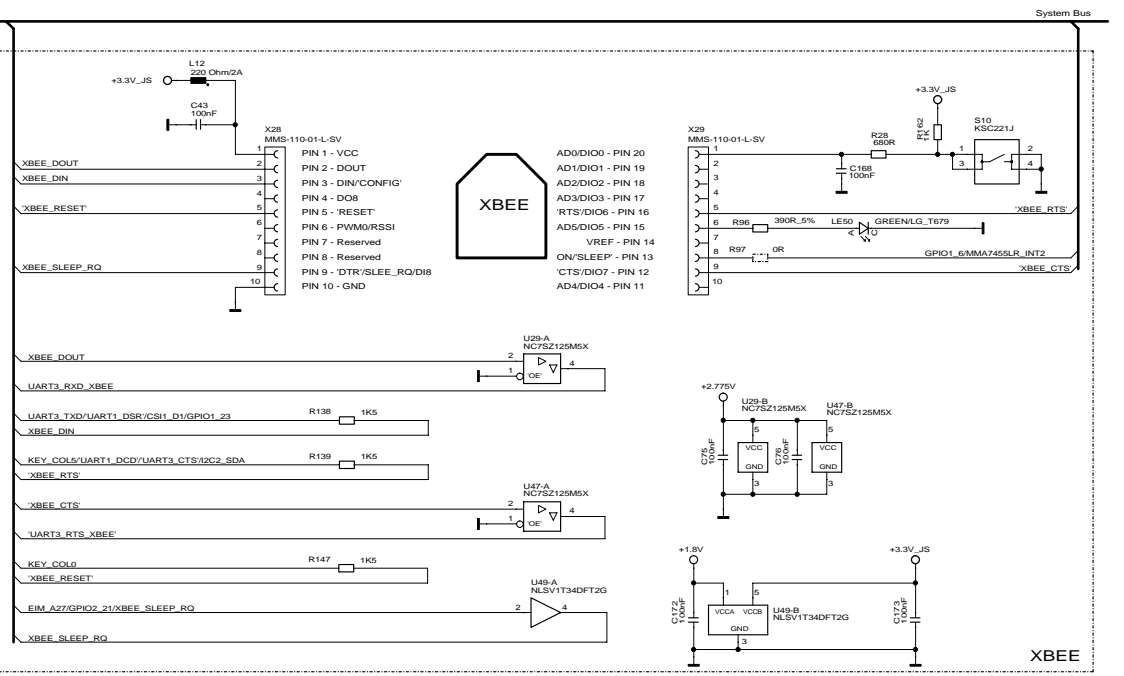
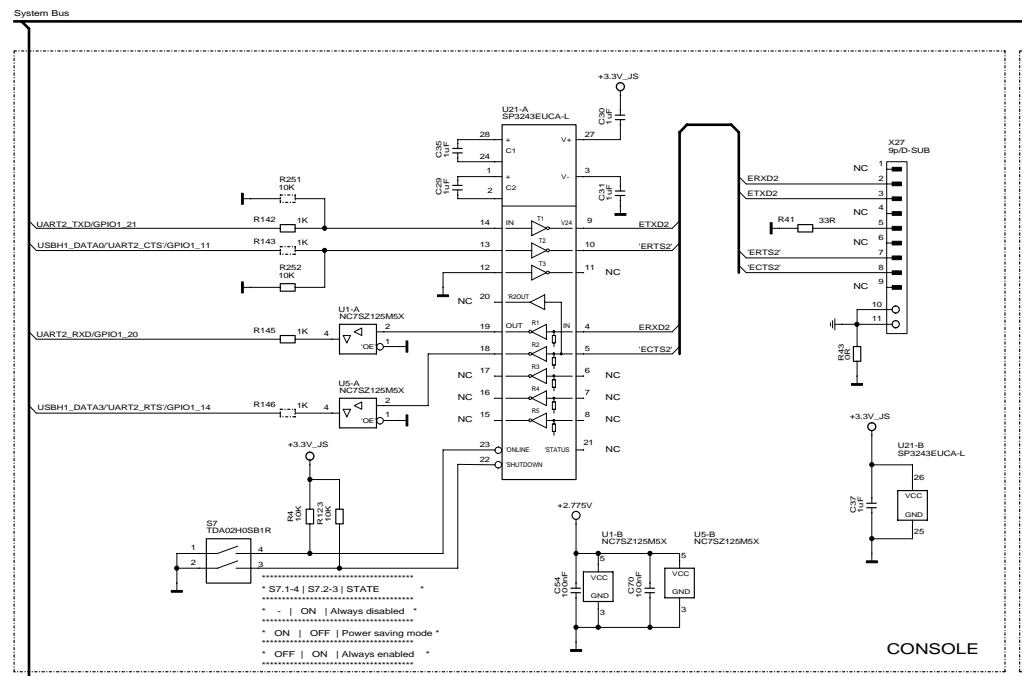




MEI



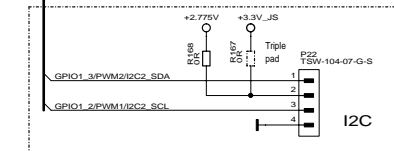
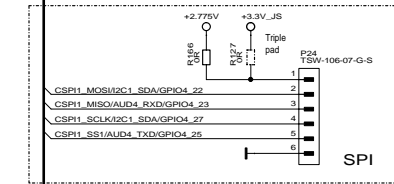
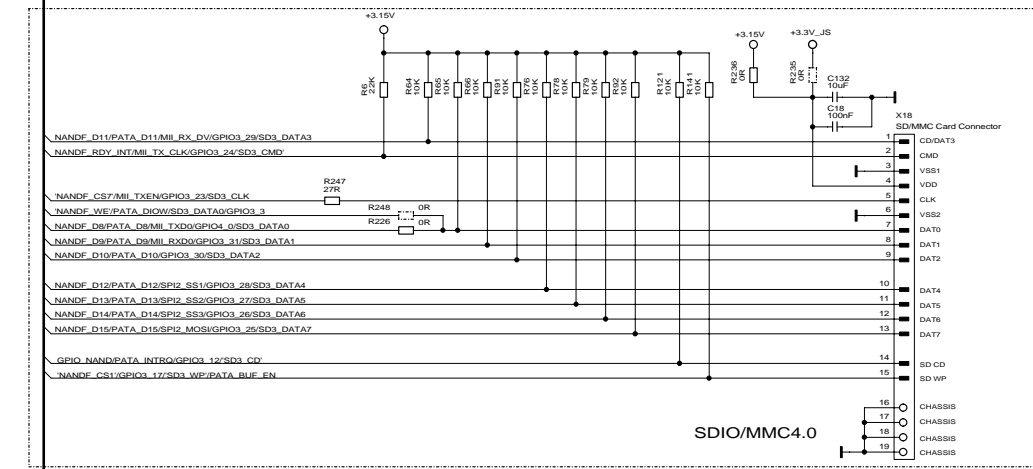
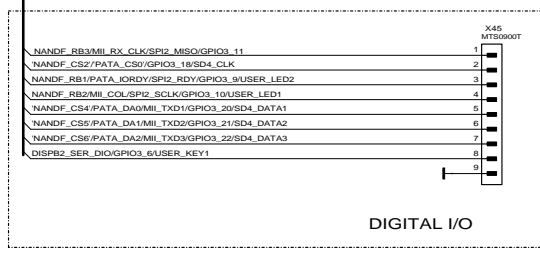
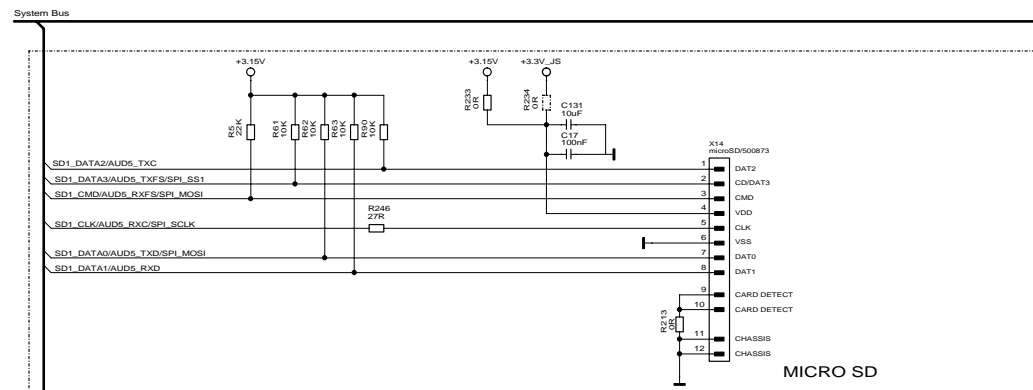
Usable for:				Filename: 3001103v-03_A.scm			
				JSCCW-i.MX51			
				<small>ConnectCore Wi-IMX 51 JumpStart Board, 3xUART, Xbee, 4xUSB Host, USB OTG, 2xEthernet, 2xLCDs, 2xCamera, 2xSDIO, HDMI, AUDIO</small>			
Designer		Date		Name		Title:	
		29.10.2009		MS		MEI	
Approved							
ISO							
						Partnumber:	
						55001488-02	
Rev.		Modification		Date		Name	
A		NPR001518		04.11.2010		MS	
						Sheet	
						7	
						of 15	
Provided for:						Provided by:	



Usable for:				Filename: 3001103x-03_A.scm	
				JSCCW-i.MX51 ConnectCore Wi-IMX 51 JumpStart Board, 3xUART, Xbee, 4xUSB Host, USB OTG, 2xEthernet, 2xLCDs, 2xCamera, 2xSDIO, HDMI, AUDIO	
Title:		Designer		Date	Name
Console, UART TTL, Xbee		MS		29.10.2009	MS
Partnumber:		Approved		ISO	
55001488-02					
Sheet 8		Rev.		Modification	Date
of 15		A		NPR001518	04.11.2010
Provided for:		Name		MS	
Provided by:		Name		MS	

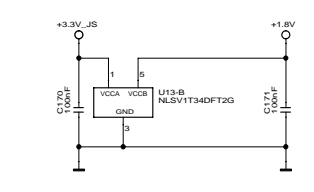
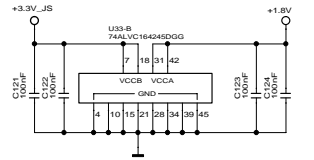
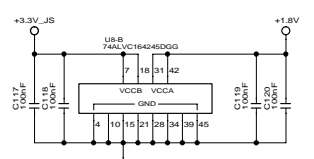
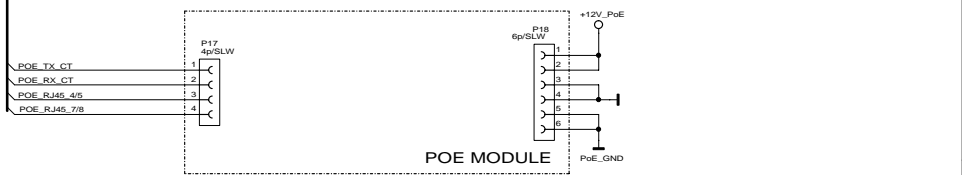
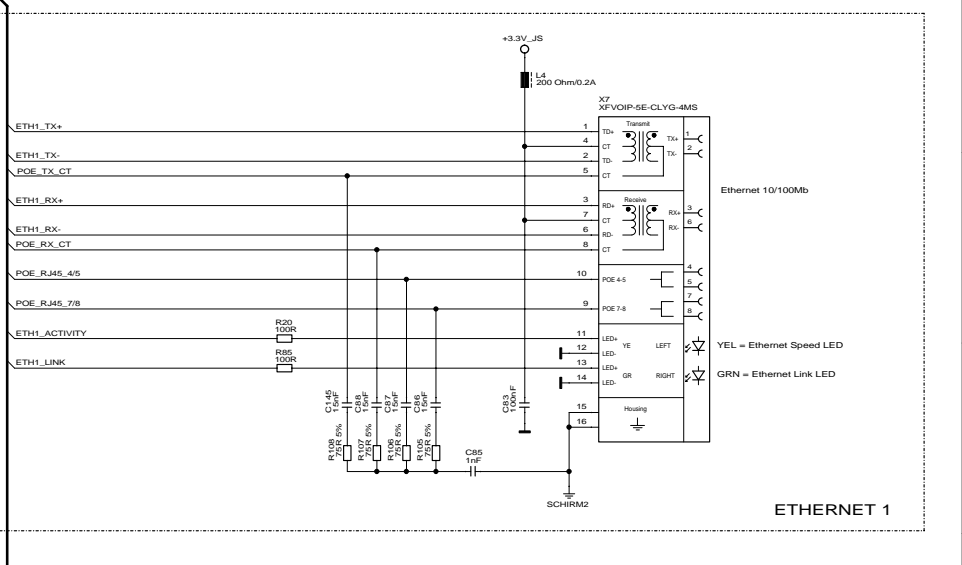
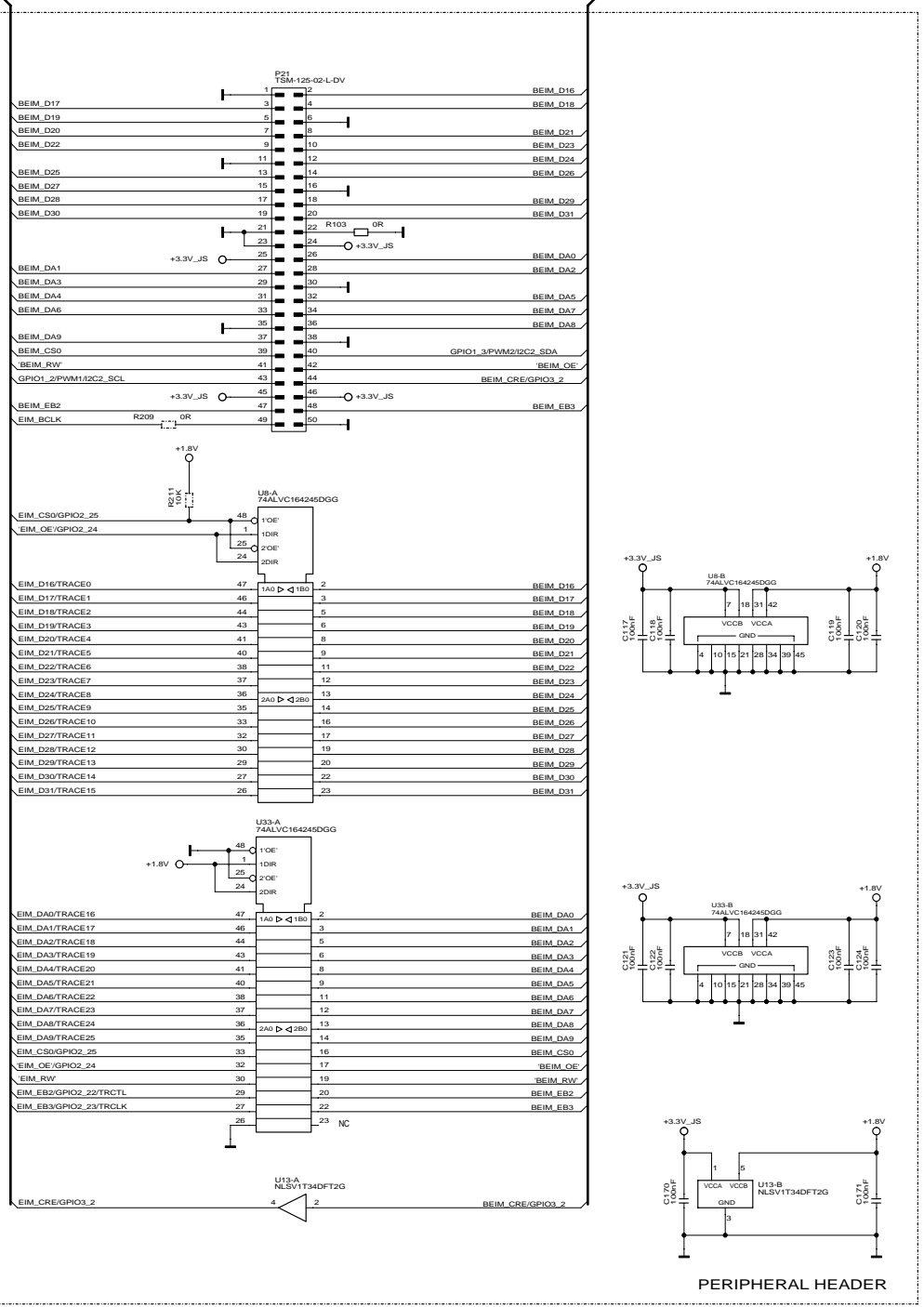


All rights reserved
© Digi International Inc.



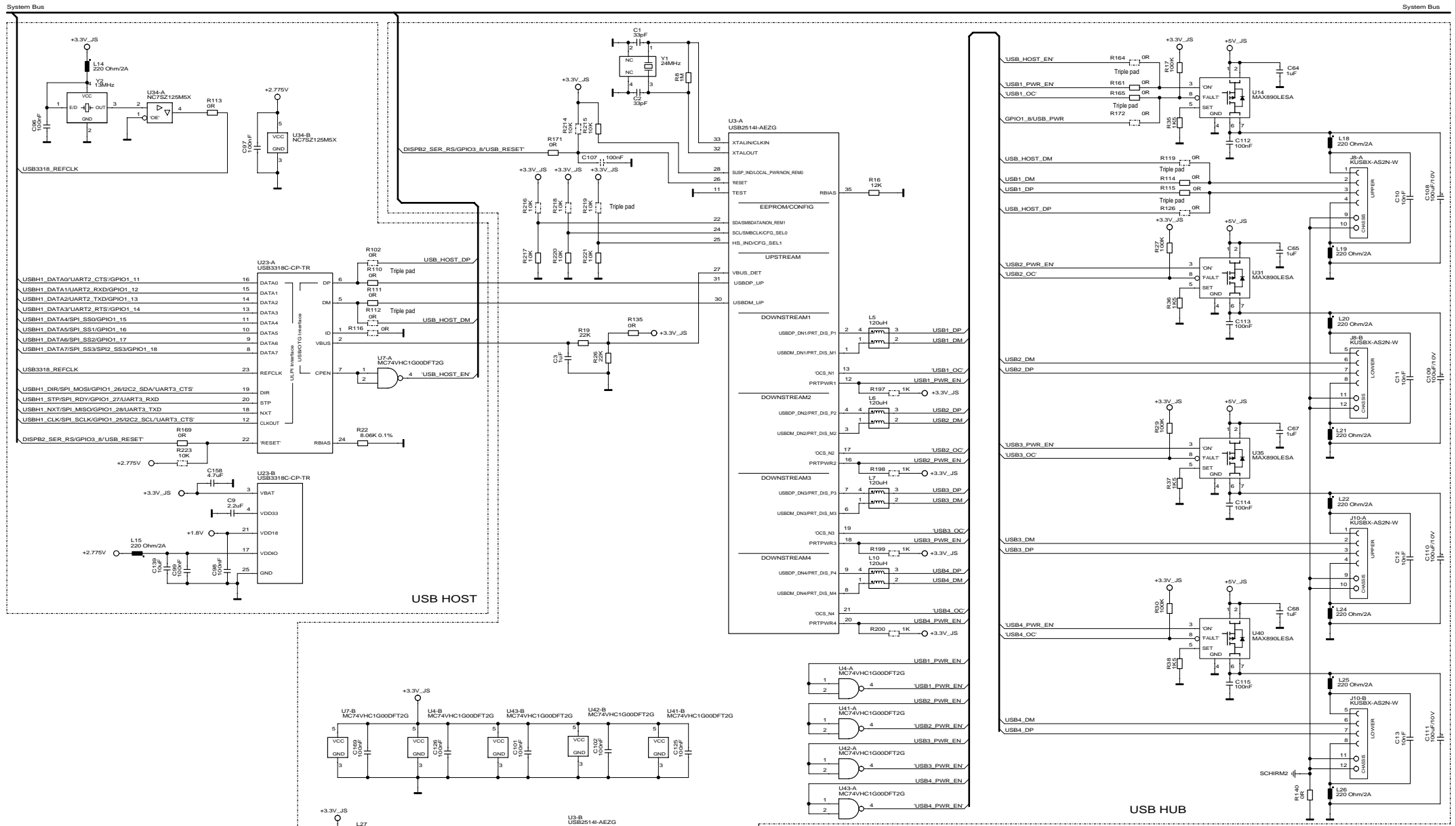
Usable for:				Filename: 3001103r-03_A.scm		
				JSCCW-i.MX51 ConnectCore W-i.MX 51 JumpStart Board, 3xUART, Xbee, 4xUSB Host, USB OTG, 2xEthernet, 2xLCDs, 2xCamera, 2xSDIO, HDMI, AUDIO		
				Title:		
				SD/MMC, MICRO-SD, SPI, I2C, DIGITAL I/O		
				Partnumber:		Sheet 9
				55001488-02		of 15
				Provided for:		
				Provided by:		
Rev.	Modification	Date	Name			
A	NPR001518	04.11.2010	MS			

System Bus System Bus



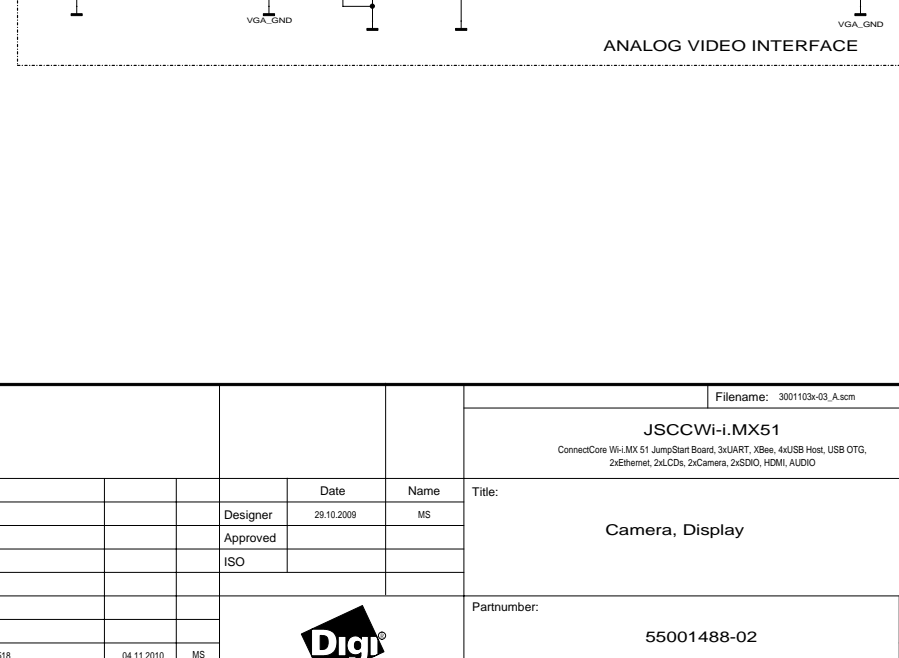
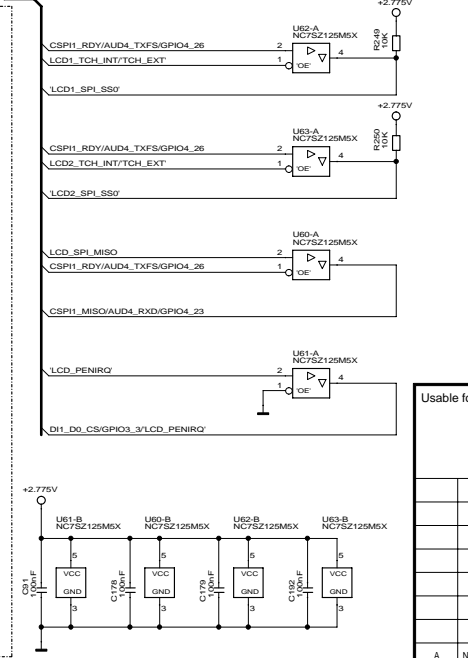
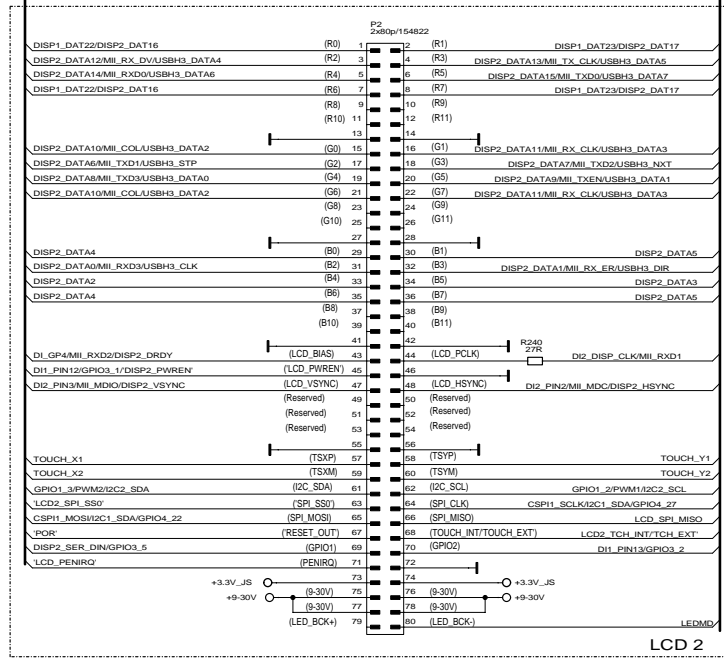
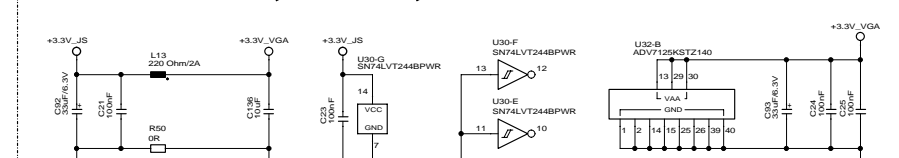
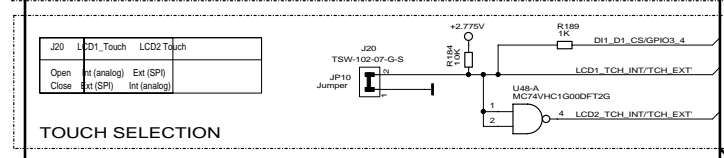
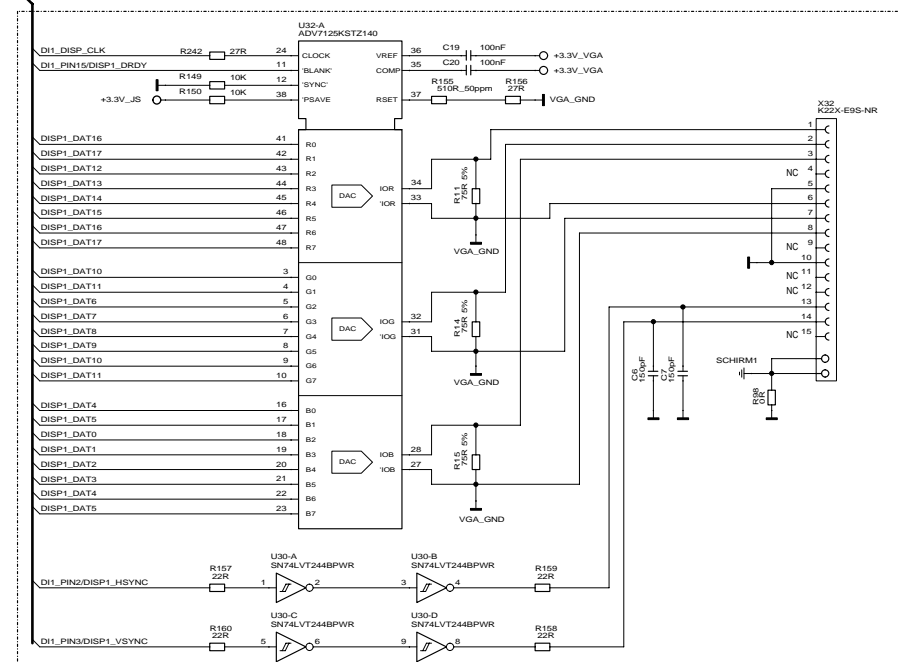
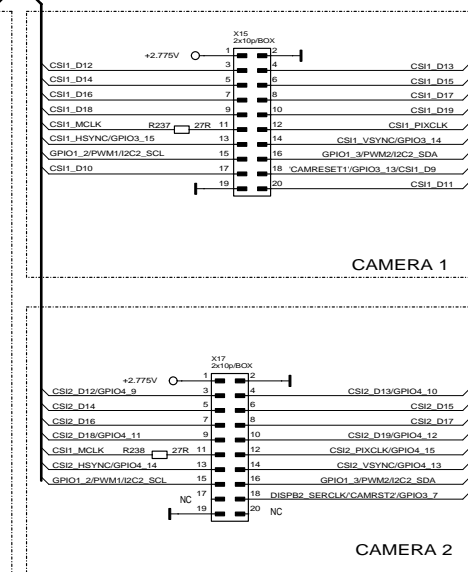
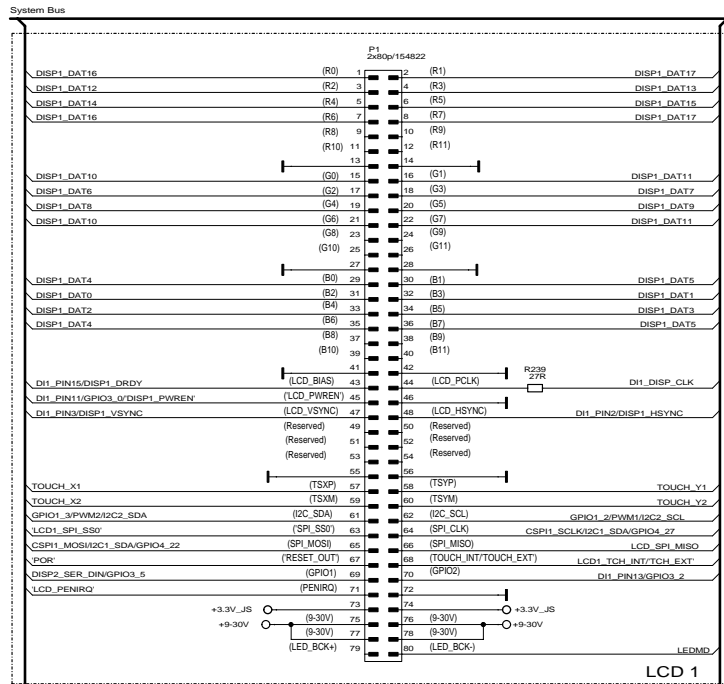
Usable for:			Filename: 3001103v-03_A.scm		
			JSCCW-i.MX51		
			ConnectCore W6-i.MX 51 JumpStart Board, 3xUART, Xbee, 4xUSB Host, USB DTG, 2xEthernet, 2xLCDs, 2xCamera, 2xSDIO, HDMI, AUDIO		
			Title: Peripheral Header, Ethernet 1		
Designer	Date	Name			
Approved	29.10.2009	MS			
ISO					
			Partnumber: 55001488-02		Sheet 10
					of 15
A	NPR001518	04.11.2010	MS		
Rev.	Modification	Date	Name	Provided for: Provided by:	

All rights reserved © Digi International Inc.



Usable for:				Filename: 3001103x-03_A.scm	
				JSCCW-i.MX51 ConnectCore W-i.MX51 JumpStart Board, 3xUART, Xbee, 4xUSB Host, USB OTG, 2xEthernet, 2xLCDs, 2xCamera, 2xSDIO, HDMI, AUDIO	
				Title: USB HOST, USB HUB	
				Partnumber: 55001488-02	
				Sheet 11 of 15	
Rev.	Modification	Date	Name	Designer	Date
A	NPR001518	04.11.2010	MS	MS	29.10.2009

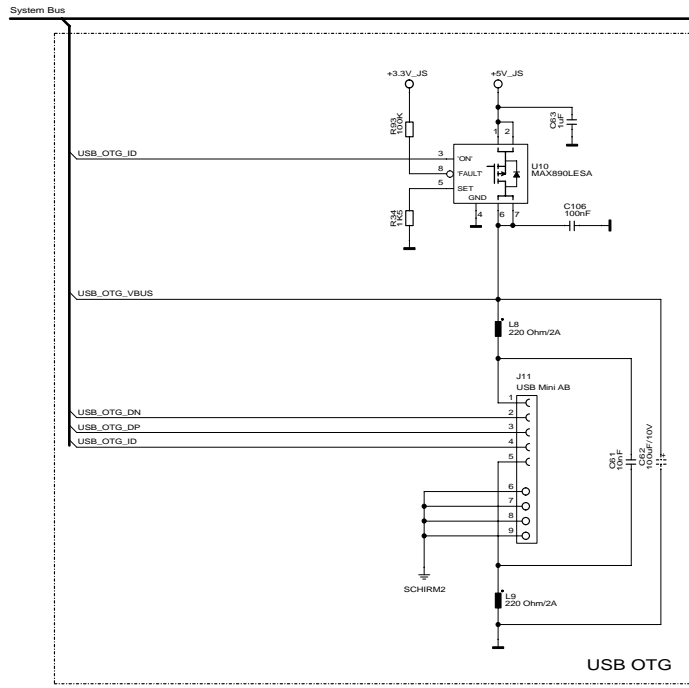




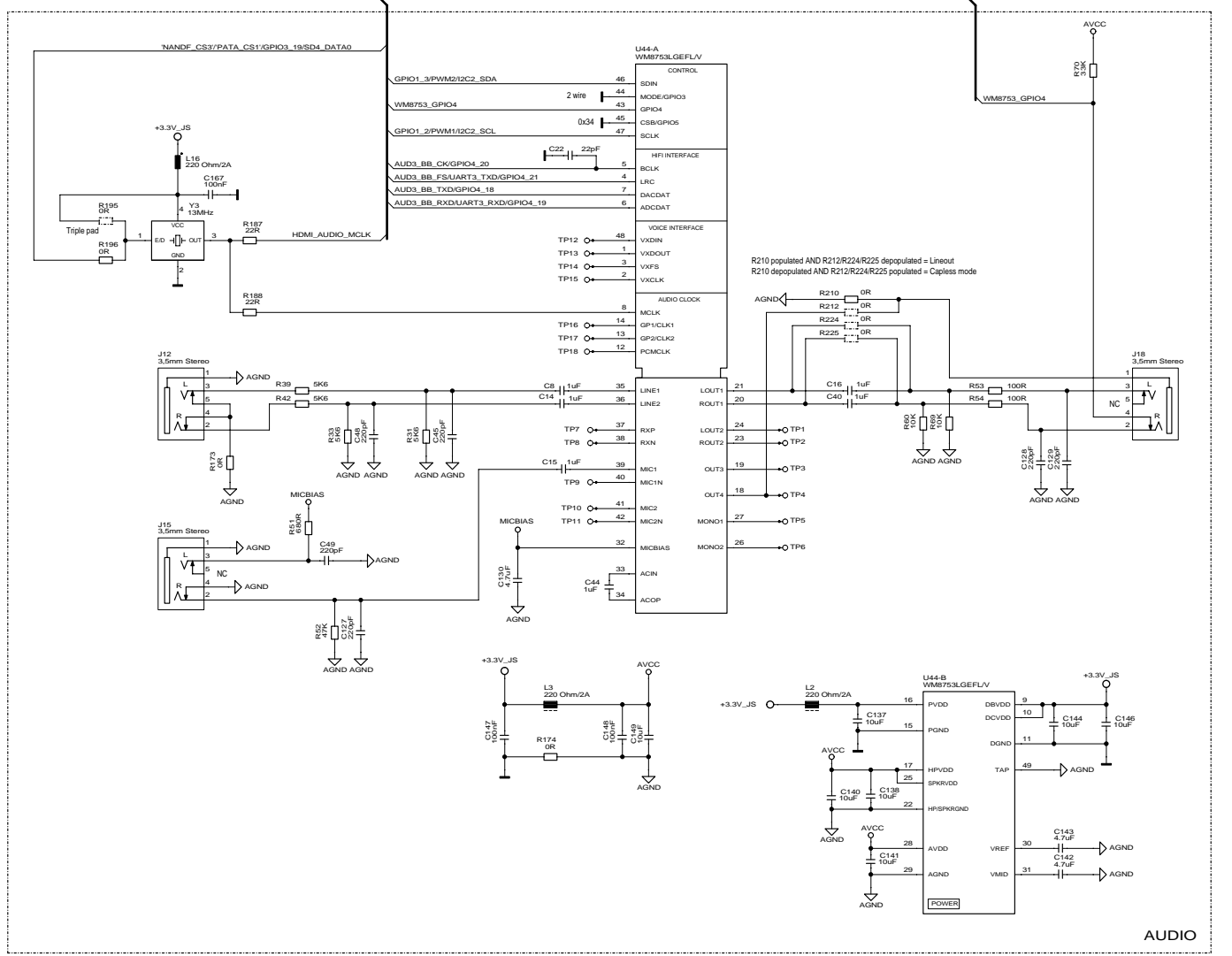
All rights reserved © Digi International Inc.



All rights reserved © Digi International Inc.



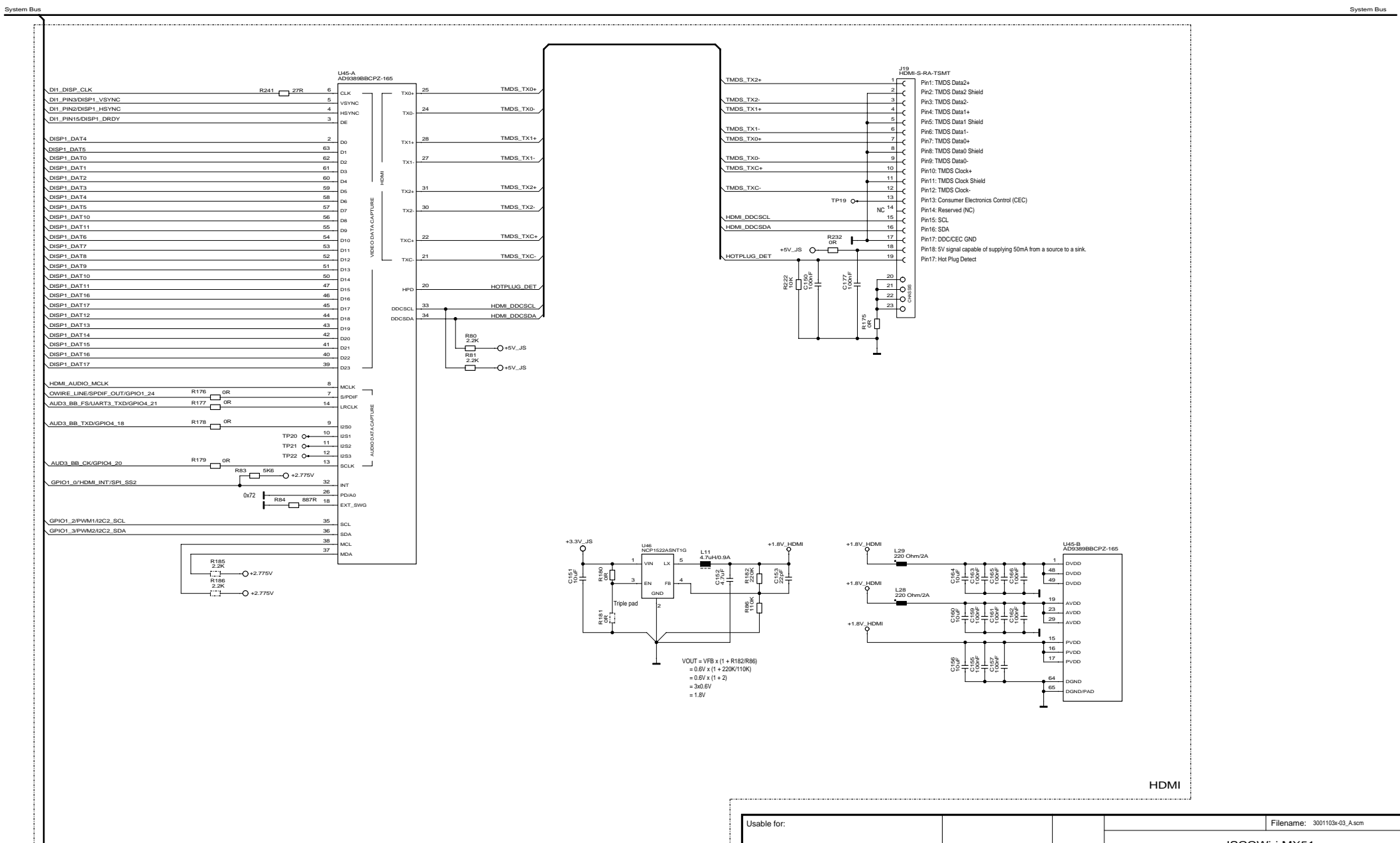
USB OTG



AUDIO

Usable for:				Date		Name		Filename: 3001103x-03_A.scm	
				29.10.2009		MS		JSCCW-i.MX51	
				Approved				ConnectCore Wi-i.MX 51 JumpStart Board, 3xUART, Xbee, 4xUSB Host, USB OTG, 2xEthernet, 2xLCDs, 2xCamera, 2xSDIO, HDMI, AUDIO	
				ISO				Title: USB OTG, AUDIO	
								Partnumber: 55001488-02	
								Sheet 13	
								of 15	
Rev. Modification Date Name				Date		Name		Provided for: Provided by:	
A NPR001518 04.11.2010 MS									



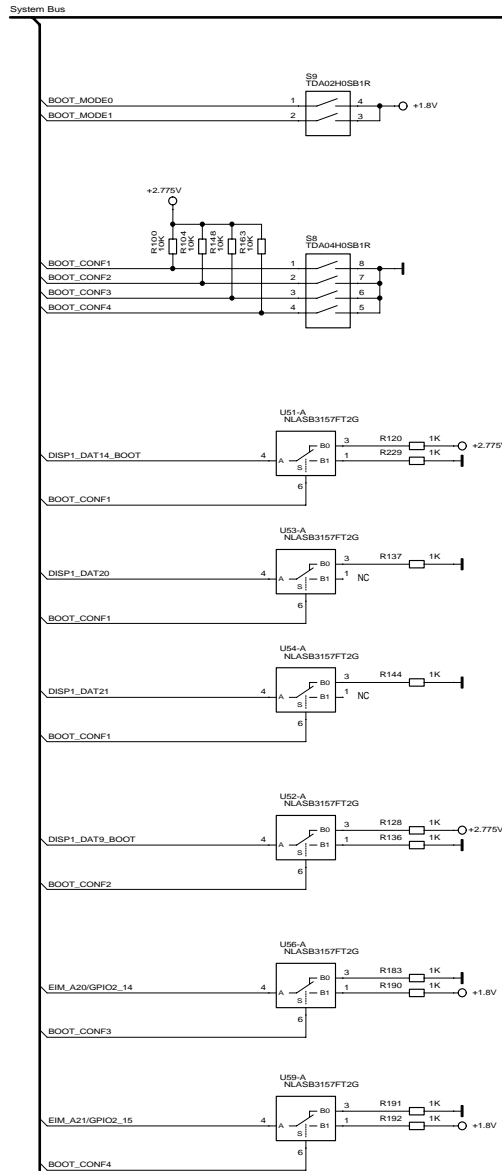


HDMI

Usable for:				Filename: 3001103x-03_A.scm					
				JSCCW-i.MX51 ConnectCore Wi-IMX 51 JumpStart Board, 3xUART, Xbee, 4xUSB Host, USB OTG, 2xEthernet, 2xLCDs, 2xCamera, 2xSDIO, HDMI, AUDIO					
				Designer		Date		Name	
				Approved					
Title:				HDMI					
Partnumber:				55001488-02					
Rev. A				NPR001518		04.11.2010		MS	
Modification				Date		Name		ISO	
Provided for:				Provided by:					



All rights reserved © Digi International Inc.



```

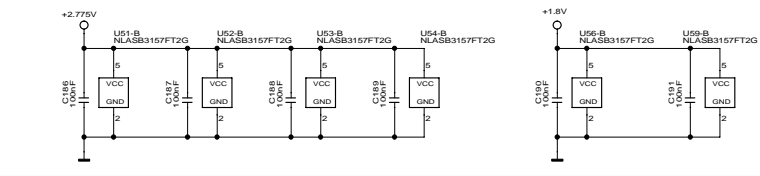
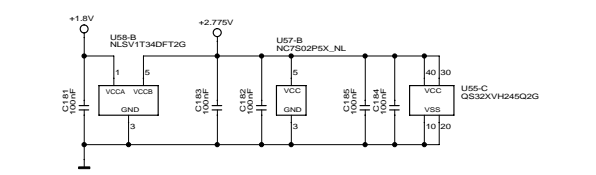
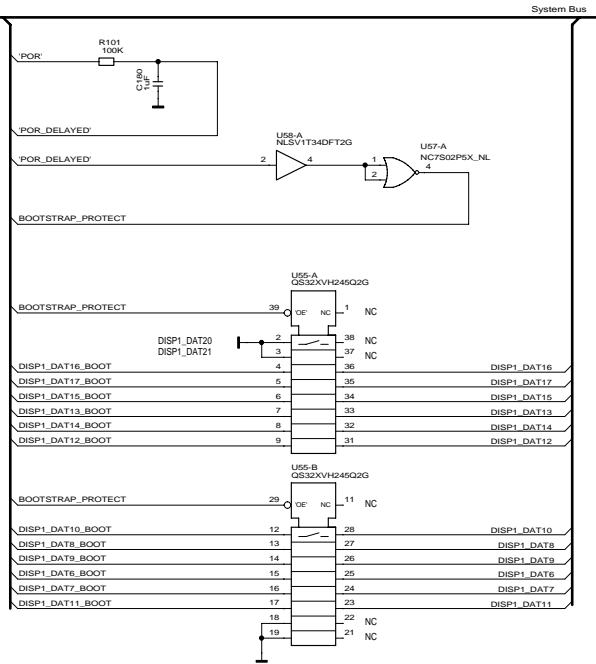
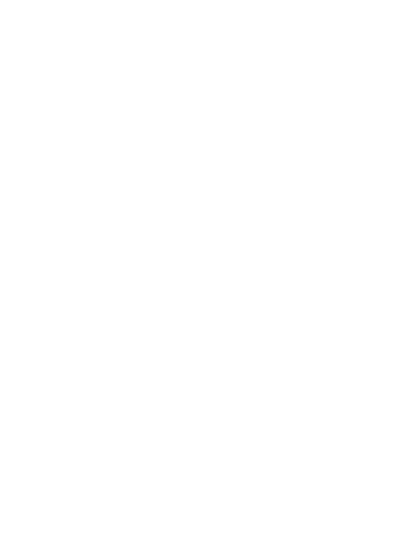
.....
*BOOT_MODE0 | BOOT_MODE0 | BOOT_TYPE | BOOT_DEFAULTS
.....
* OPEN (0) | OPEN (0) | Internal Boot | Execute ROM code boot mode from boot switches * DEFAULT
.....
* OPEN (0) | CLOSE (1) | FSL Test Mode | Special mode reserved for device testing
.....
* CLOSE (1) | OPEN (0) | Internal Boot | Boot configuration from FUSE only
.....
* CLOSE (1) | CLOSE (1) | Serial Boot Loader | USB or UART
.....

.....
*BOOT_CONF1 | Description
.....
* 0 | Expansion Device (SD cards)
.....
* 1 | NAND Flash * DEFAULT
.....

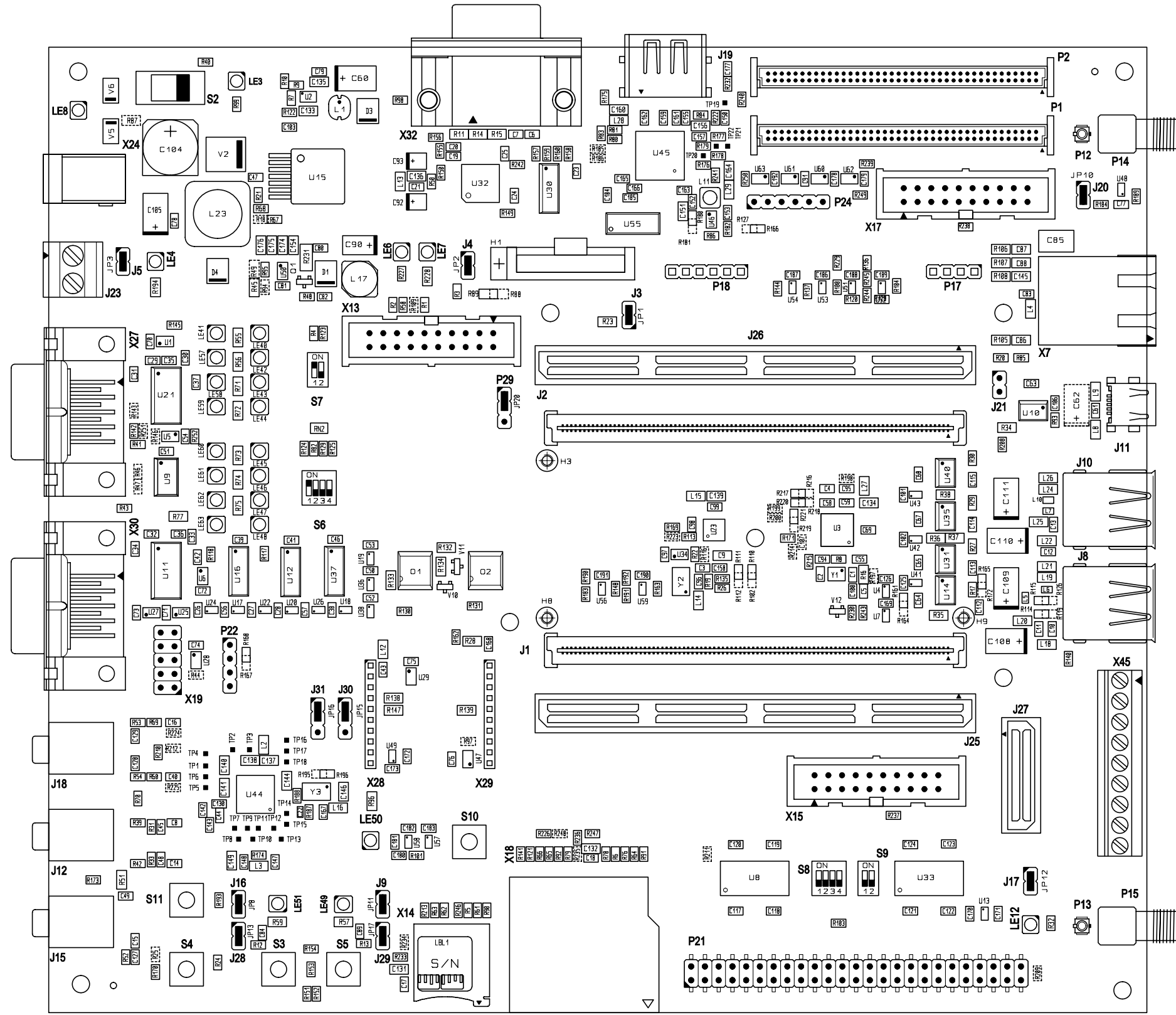
.....
*BOOT_CONF2 | Description
.....
* 0 | SD3 (SDMMC card)
.....
* 1 | SD1 (uSD card) * DEFAULT
.....

.....
*BOOT_CONF4 | BOOT_CONF3 | Description
.....
* 0 | 0 | UART1 (ME)
.....
* 0 | 1 | UART2 (CONSOLE)
.....
* 1 | 0 | UART3 (TTL/XBEE)
.....
* 1 | 1 | RESERVED * DEFAULT
.....

```



Usable for:				Filename: 3001103x-03_A.scm		
				JSCCW-i.MX51		
				ConnectCore Wi-i.MX 51 JumpStart Board, 3xUART, Xbee, 4xUSB Host, USB OTG, 2xEthernet, 2xLCDs, 2xCamera, 2xSDIO, HDMI, AUDIO		
				Title:		
				Designer:	Date:	Name:
				Approved:		
				ISO:		
				BOOTSTRAP		
				Partnumber:		Sheet
				55001488-02		15
				Provided for:		of 15
				Provided by:		
Rev.	Modification	Date	Name			
A	NPR001518	04.11.2010	MS			



Usable for:				Filename: 3001103x-03_A.pcb	
				JSCCW-i.MX51 ConnectCore Wi-i.MX 51 JumpStart Board, 3xUART, XBee, 4xUSB Host, USB OTG, 2xEthernet, 2xLCDs, 2xCamera, 2xSDIO, HDMI, AUDIO	
				Title:	
				Placement TOP Side	
				Partnumber:	
				55001488-02	
				Sheet	
				1	
				of 2	
Rev. Modification Date Name				Provided for: Provided by:	
A	NPR001518	05.11.10	SC		



