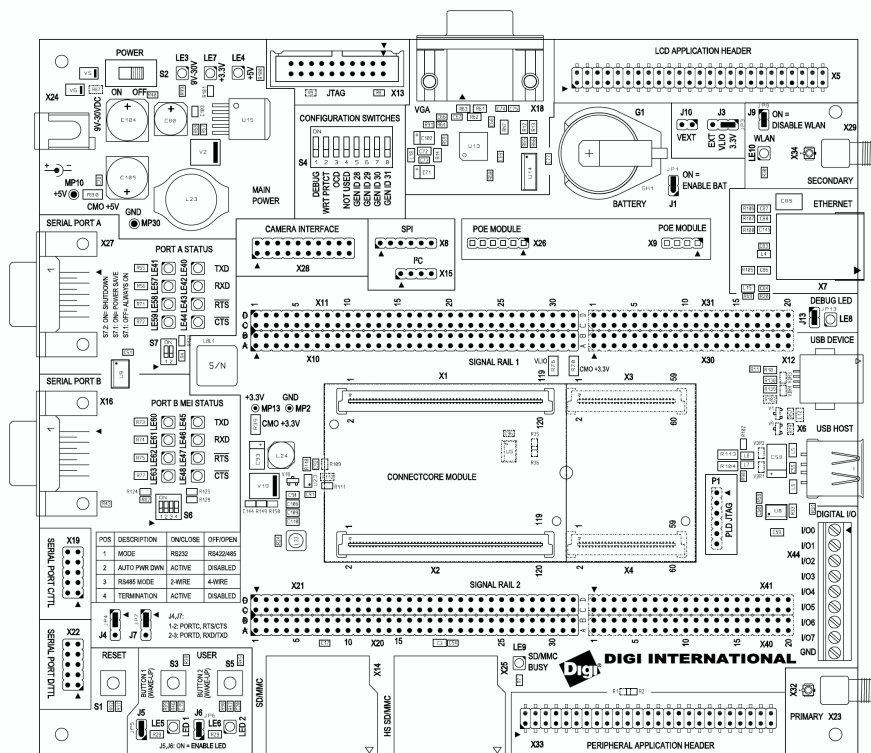


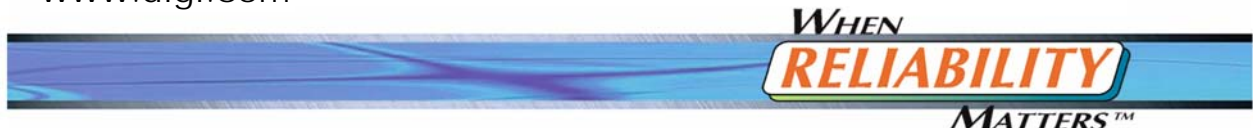


ConnectCore 9M 2443 Dev. Board

55001412-01 RevA



www.digi.com



JumpStart Board JSCC9M2443

Power Supply
page 6

Reset
page 6

JTAG
page 6

Ethernet
page 5

RS232
page 9

USB
page 3

SD/MMC
page 3

VGA
page 4

MEI
page 8


LCD,
Touch
page 5

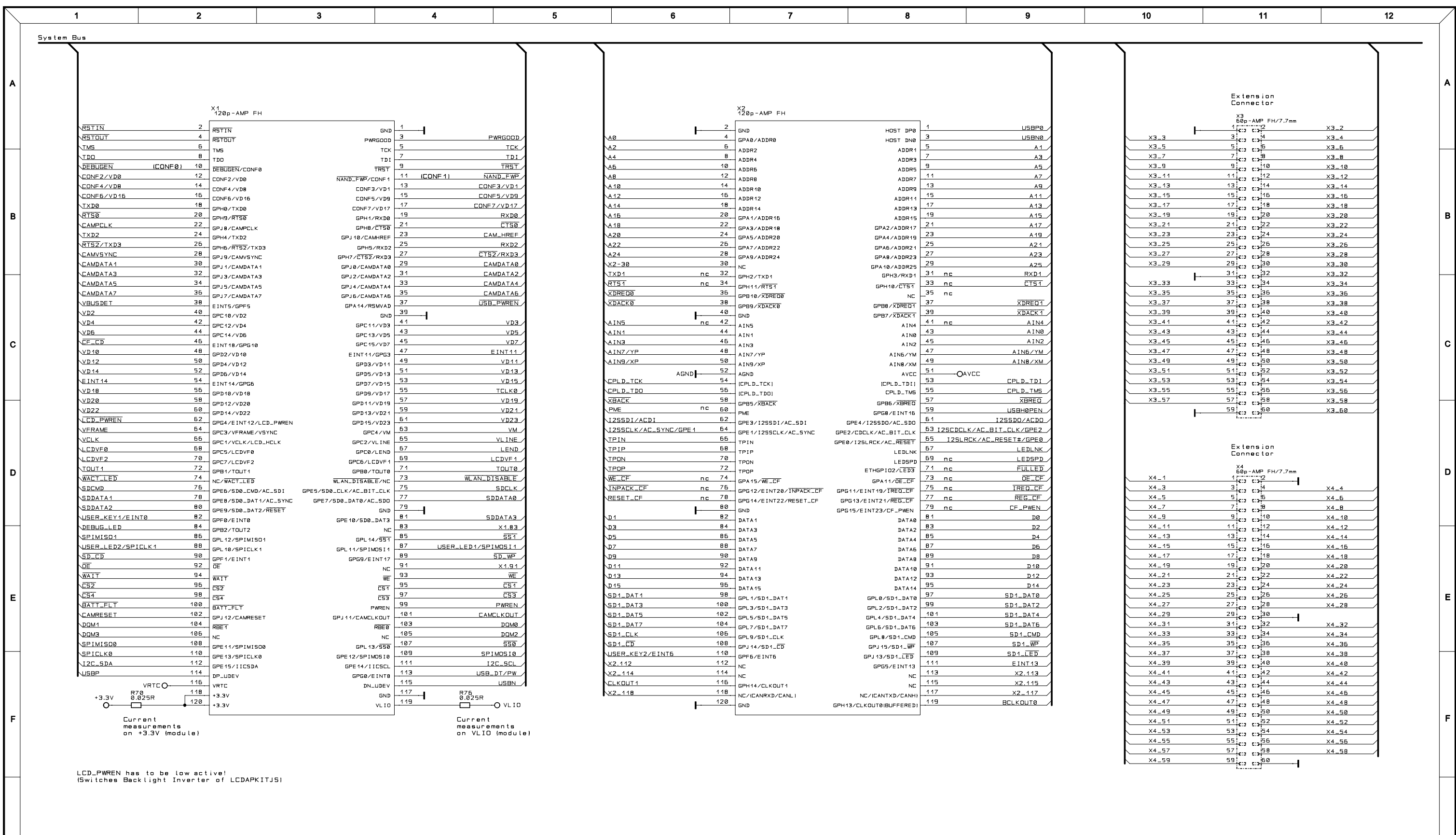
Digital
I/O
page 5

Expansion
Connectors
page 7

Board-to-Board Connectors
page 2

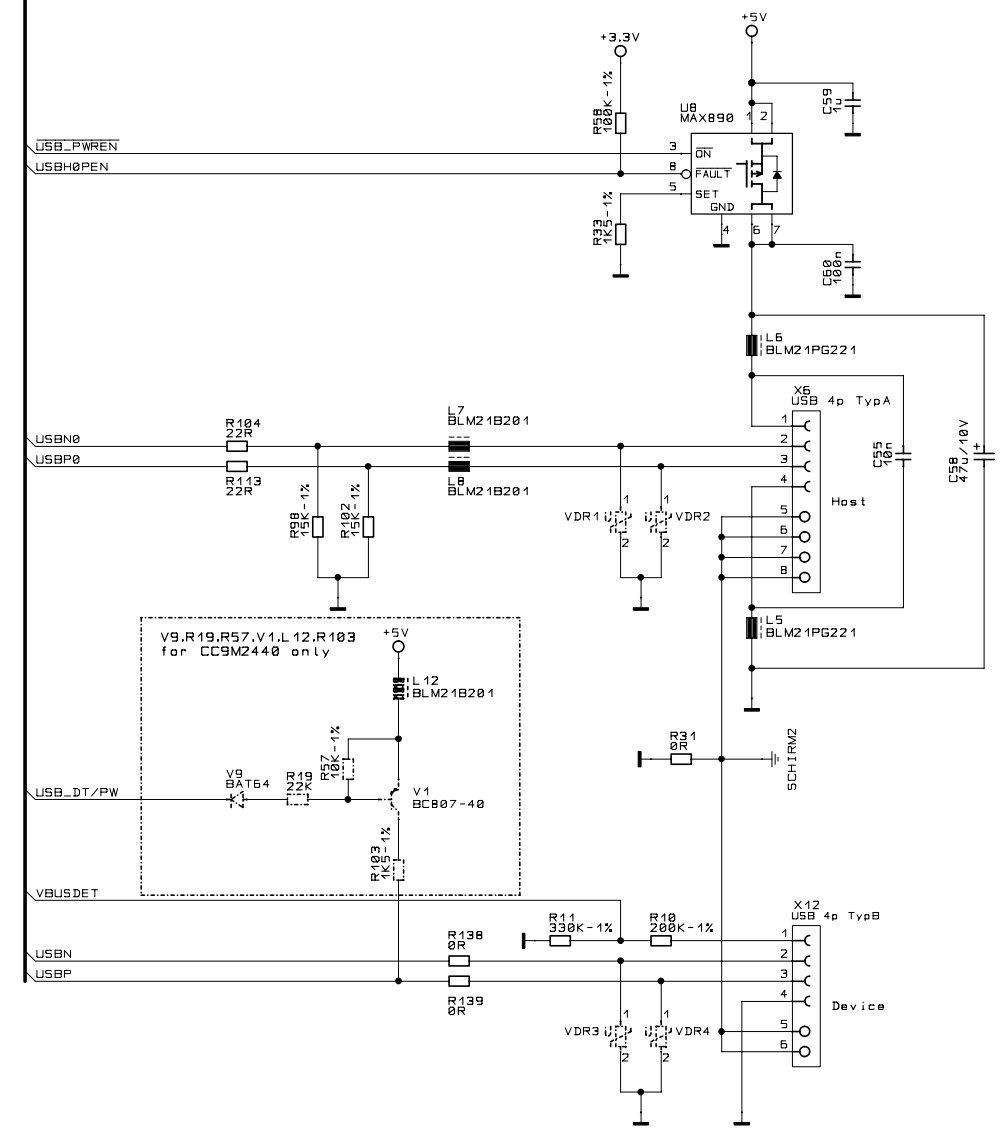
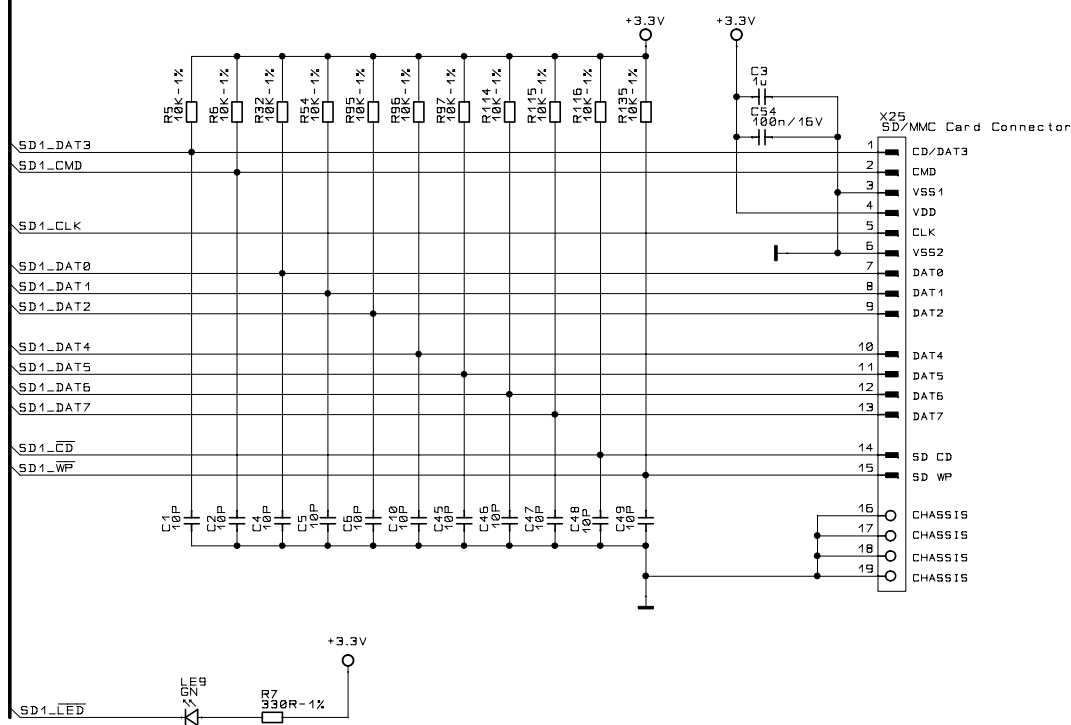
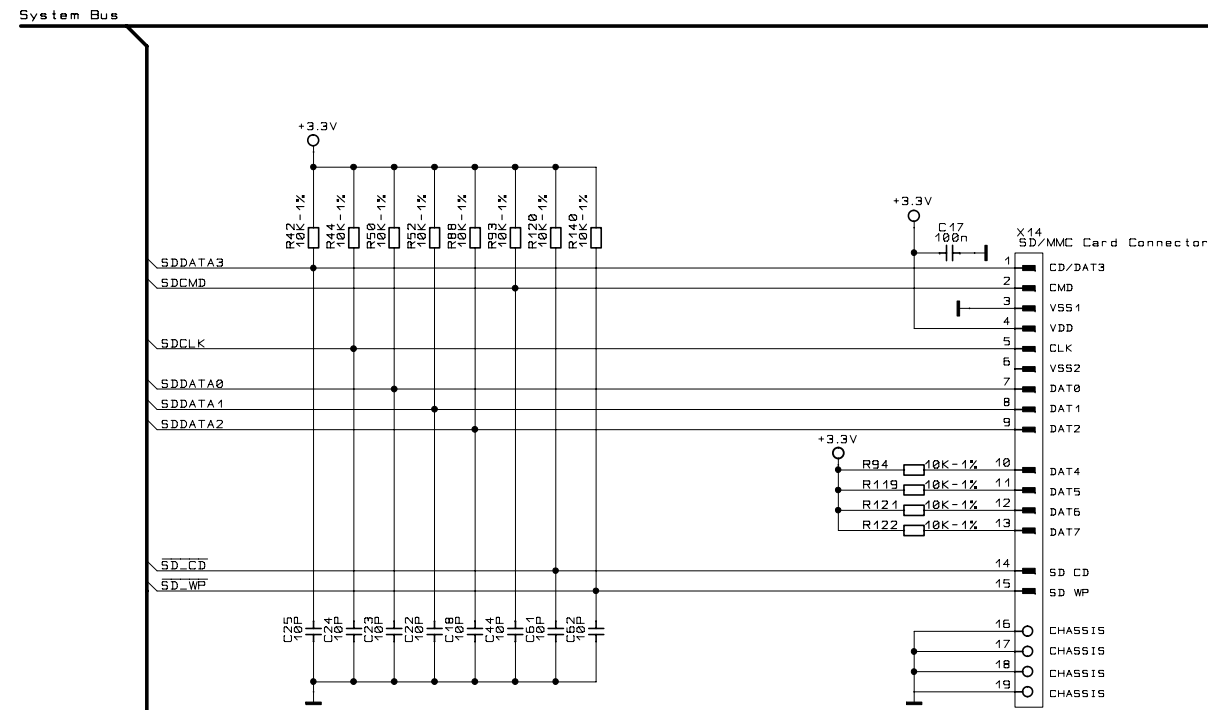
All rights reserved © Digi International Inc.


Usable for:				Scale:			Filename: JSCC9M2443.scm						
				ConnectCore 9M 2443 Dev. Board									
				ConnectCore 9M 2443 Development Board JumpStart MEI, RS232, VGA, SPI, I.C, USB Host...									
				Title:			Overview						
				Partnumber:			55001412-01						
				Sheet			1						
				of			9						
Rev.				Modification		Date		Name		Provided for:		Provided by:	
A				ECC000095		17.03.2009		Hp5					



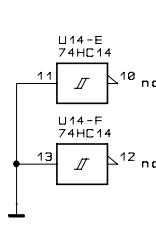
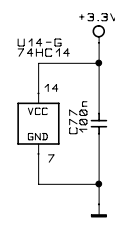
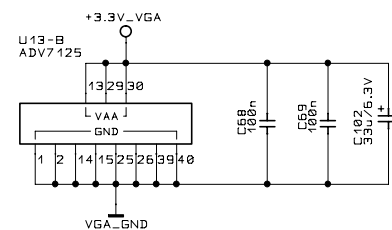
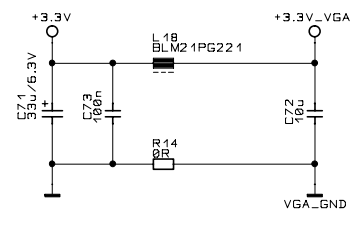
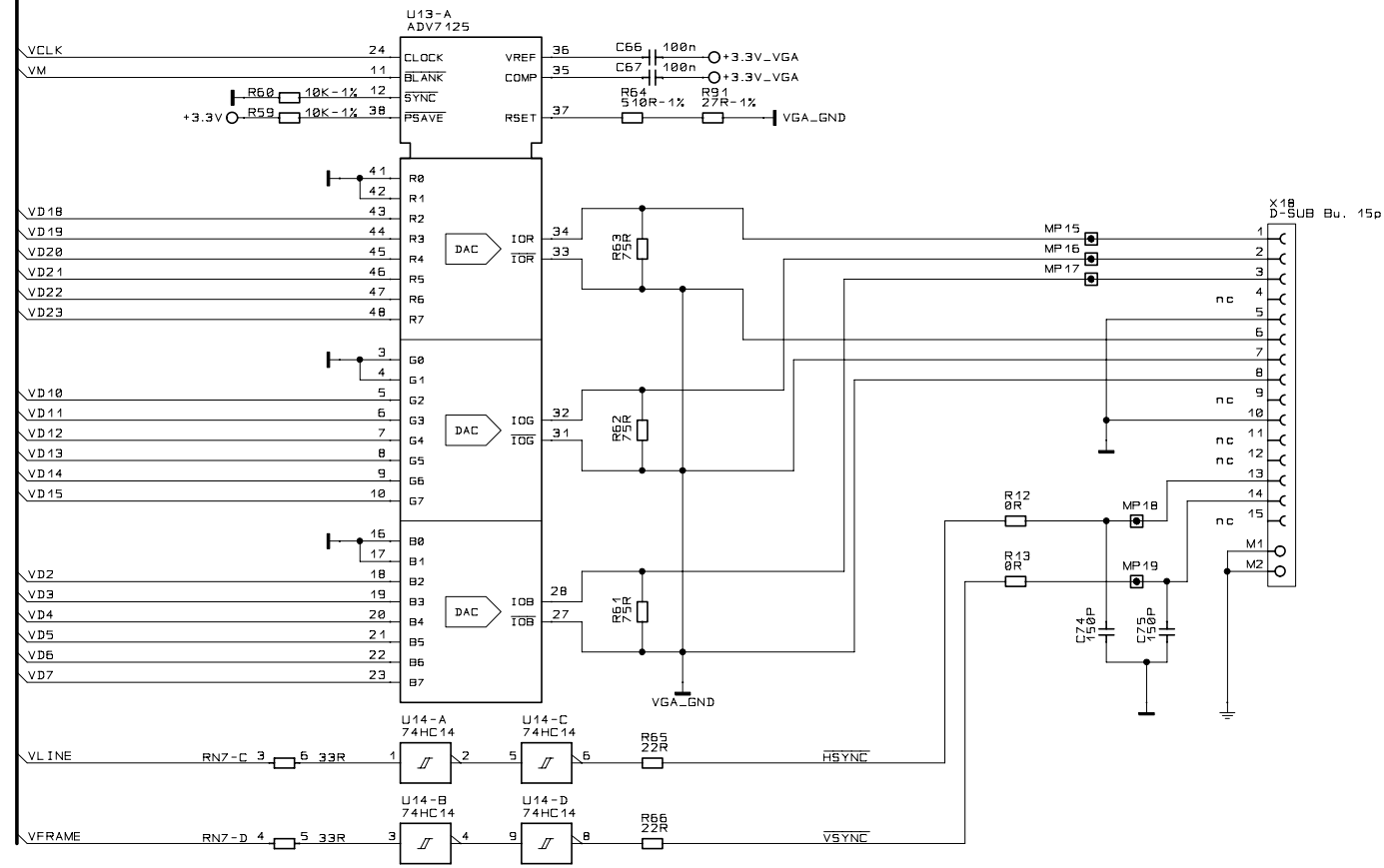
Usable for:		Scale:		Filename: JSCC9M2443.scm	
				ConnectCore 9M 2443 Dev. Board	
				ConnectCore 9M 2443 Development Board JumpStart ME1, RS232, VGA, SPI, I.C, USB Host...	
		Title:		System Connectors	
		Partnumber:		55001412-01	
		Provided for:		Provided by:	
Rev.	Modification	Date	Name		
A	ECC0000956	17.03.2009	Hp5		





Usable for:				Scale:		Filename: JSCC9M2443.scm	
				ConnectCore 9M 2443 Dev. Board ConnectCore 9M 2443 Development Board JumpStart ME1, RS232, VGA, SPI, I.C, USB Host...			
				Title: USB, SD/MMC			
				Partnumber: 5500 14 12 - 0 1		Sheet 3	
				Provided for:		Provided by:	
Rev.	Modification	Date	Name				
A	ECC0000956	17.03.2009	Hp5				

System Bus

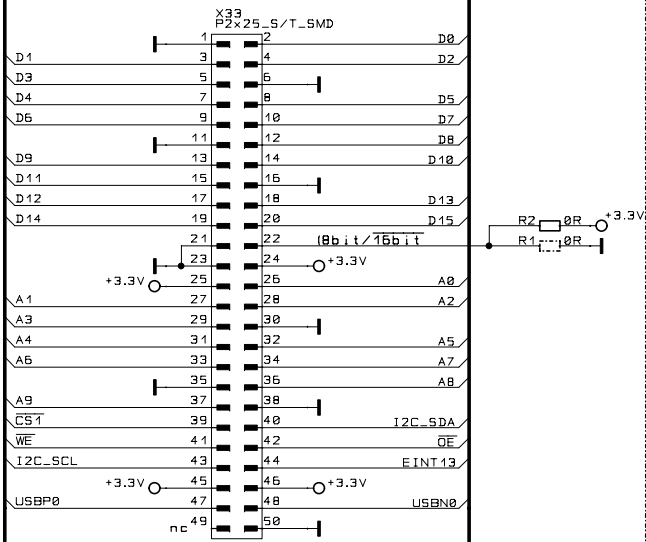


Usable for:				Scale:		Filename: JSCC9M2443.scm	
				ConnectCore 9M 2443 Dev. Board ConnectCore 9M 2443 Development Board JumpStart ME1, RS232, VGA, SPI, I.C, USB Host...			
		Date		Name		Title:	
		17.03.2009		Hp5		VGA	
		Designer		Approved		ISO	
						Partnumber:	
						55001412-01	
						Sheet	
						4	
						of	
						9	
Rev.		Modification		Date		Name	
A		ECC000896		17.03.2009		Hp5	
						Provided for:	
						Provided by:	

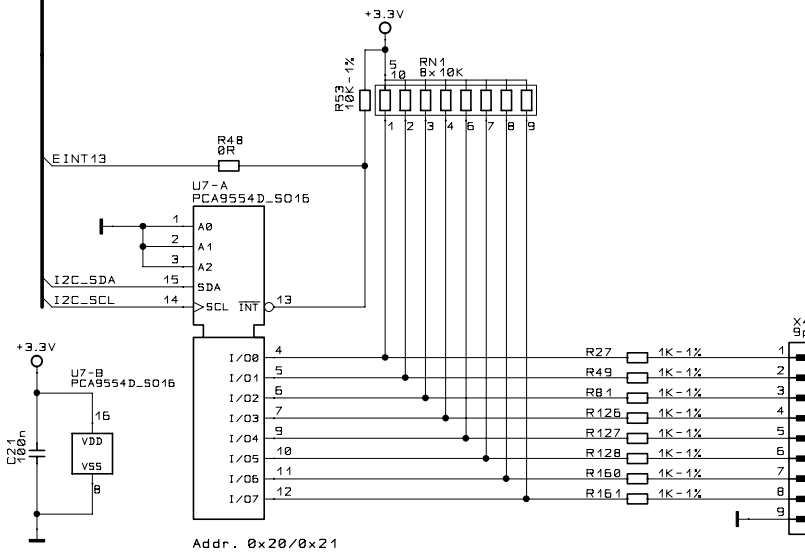


System Bus

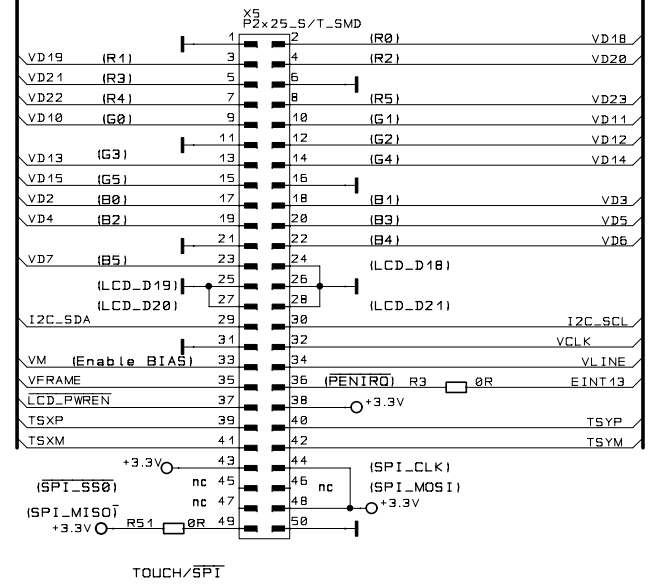
Peripheral Application Header



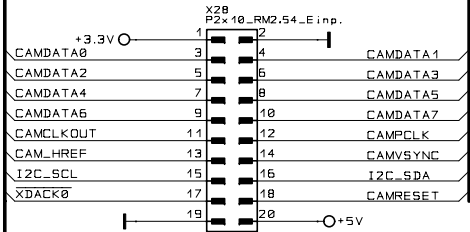
Digital I/O Interface



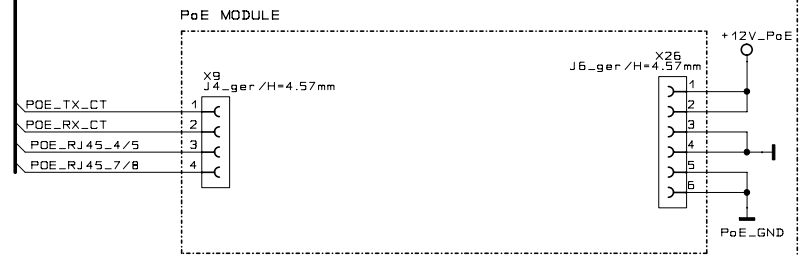
LCD Expansion Interface



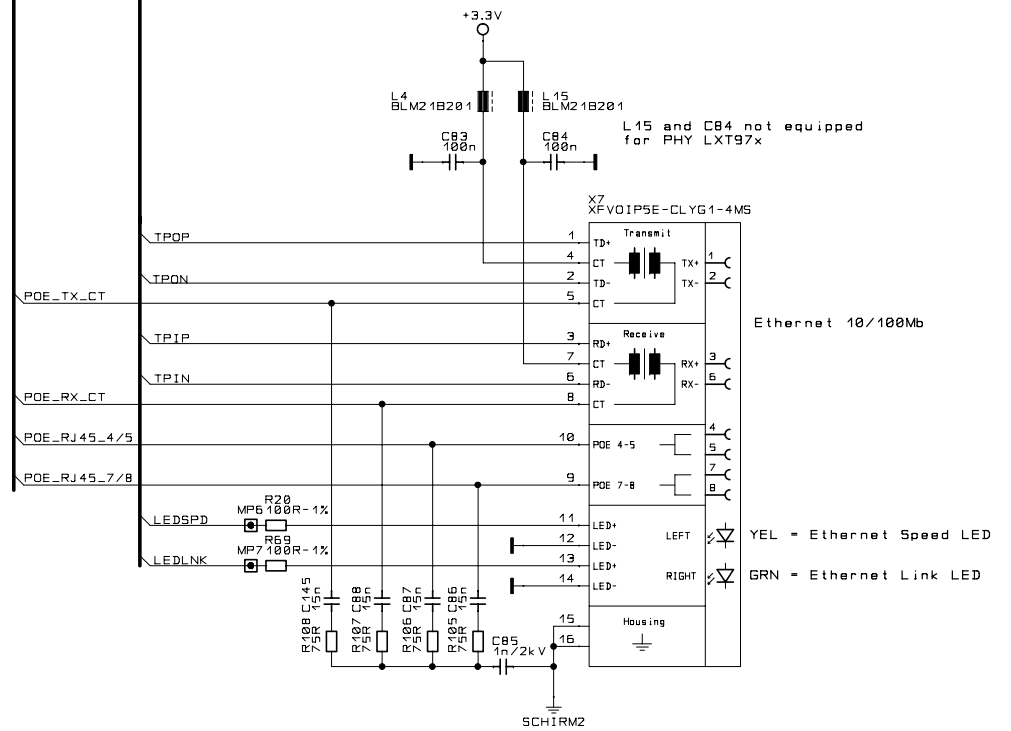
Camera Interface



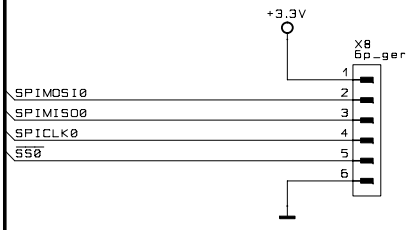
PoE Bus



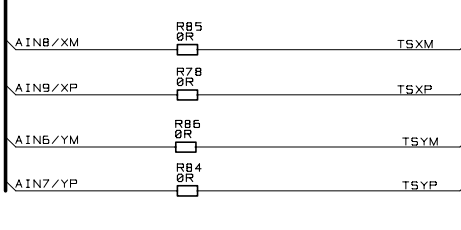
Ethernet Connector



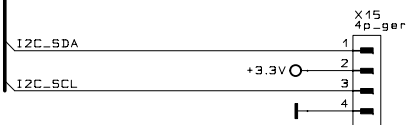
SPI Connector



Analog Touch Signals

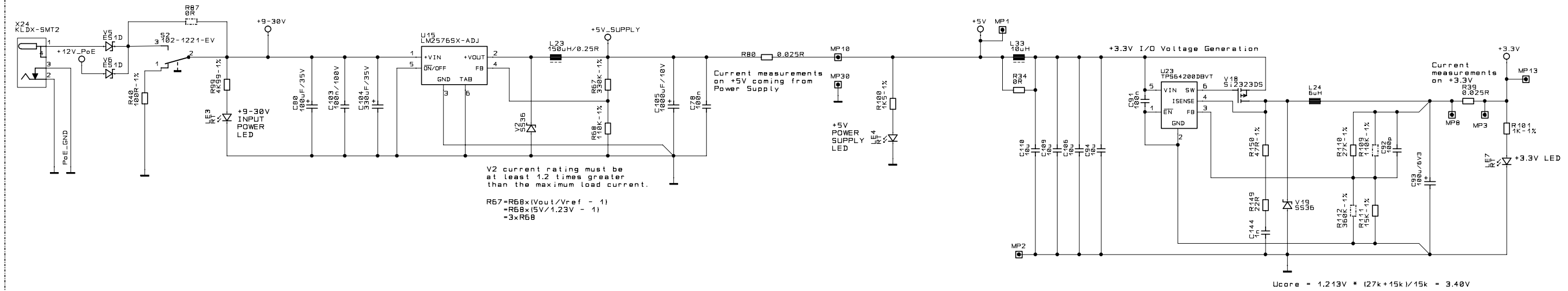


I2C Connector

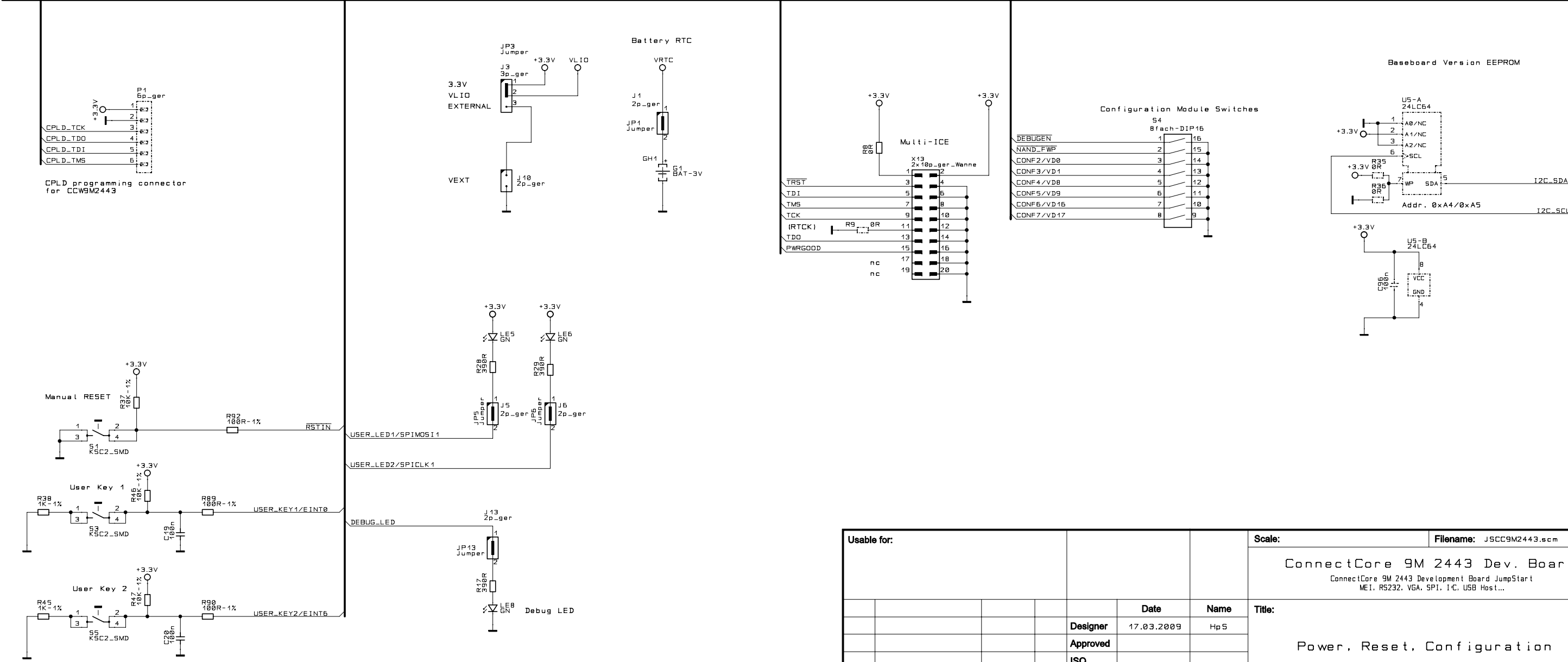


Usable for:				Scale:		Filename: JSCC9M2443.scm	
				ConnectCore 9M 2443 Dev. Board ConnectCore 9M 2443 Development Board JumpStart ME1, RS232, VGA, SPI, I.C, USB Host...			
				Peripheral Connectors			
				Partnumber:		Sheet	
				55001412-01		5	
				Provided for:		of	
						9	
Rev.	Modification	Date	Name				
A	ECC0000956	17.03.2009	Hp5				

POWER UNIT

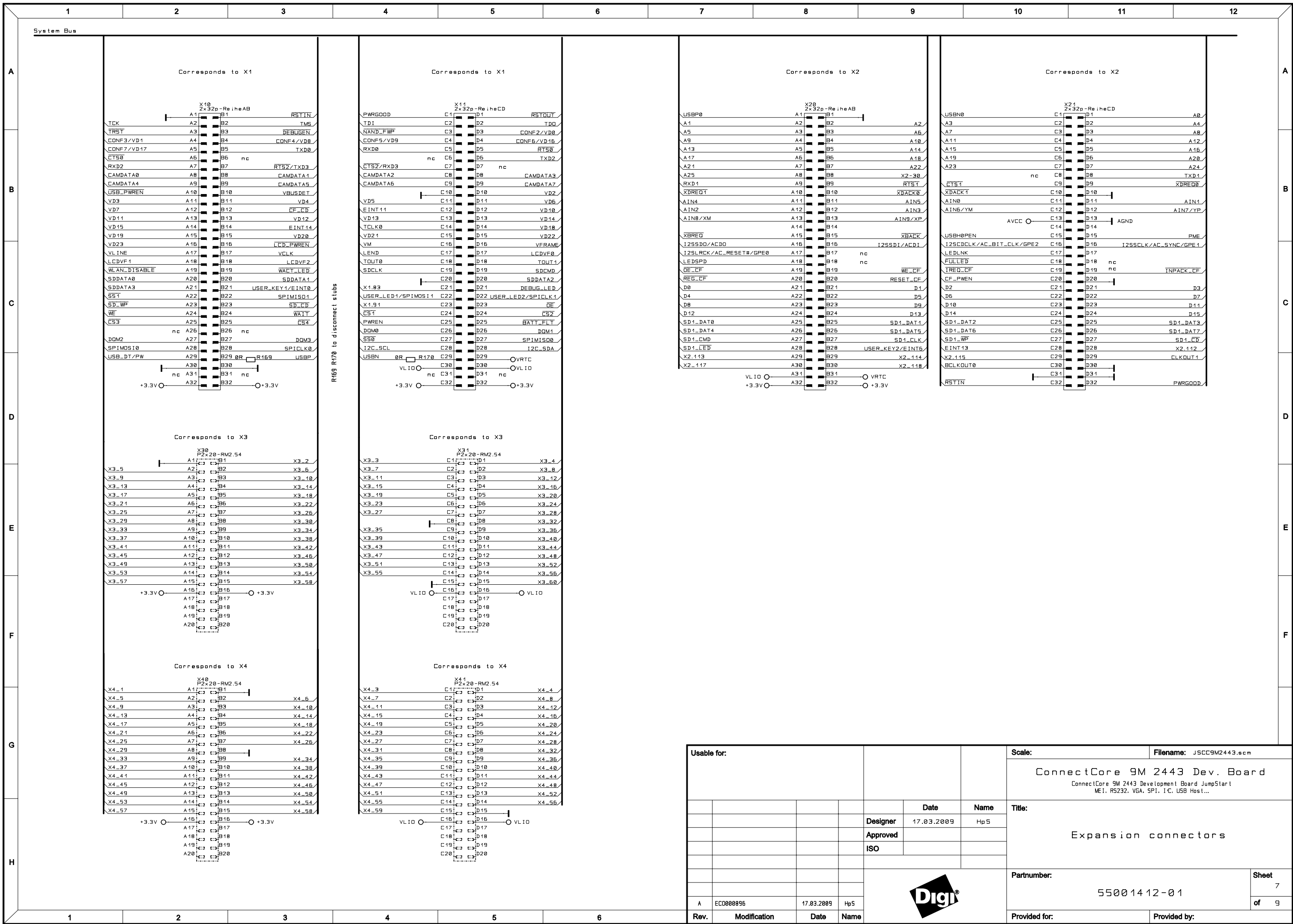


System Bus



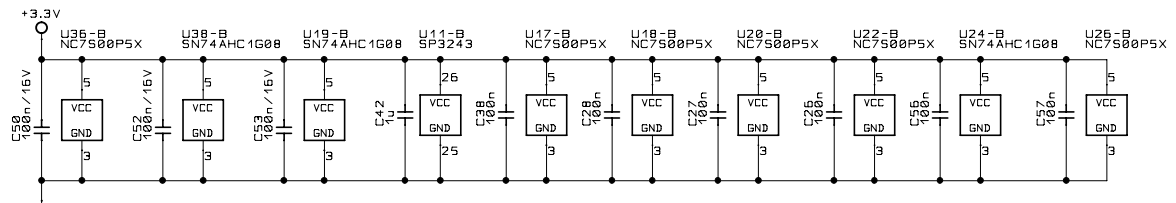
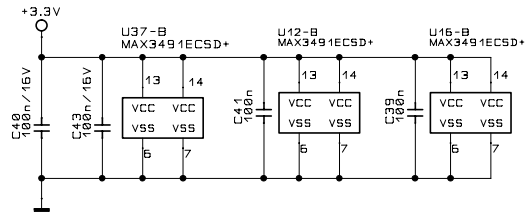
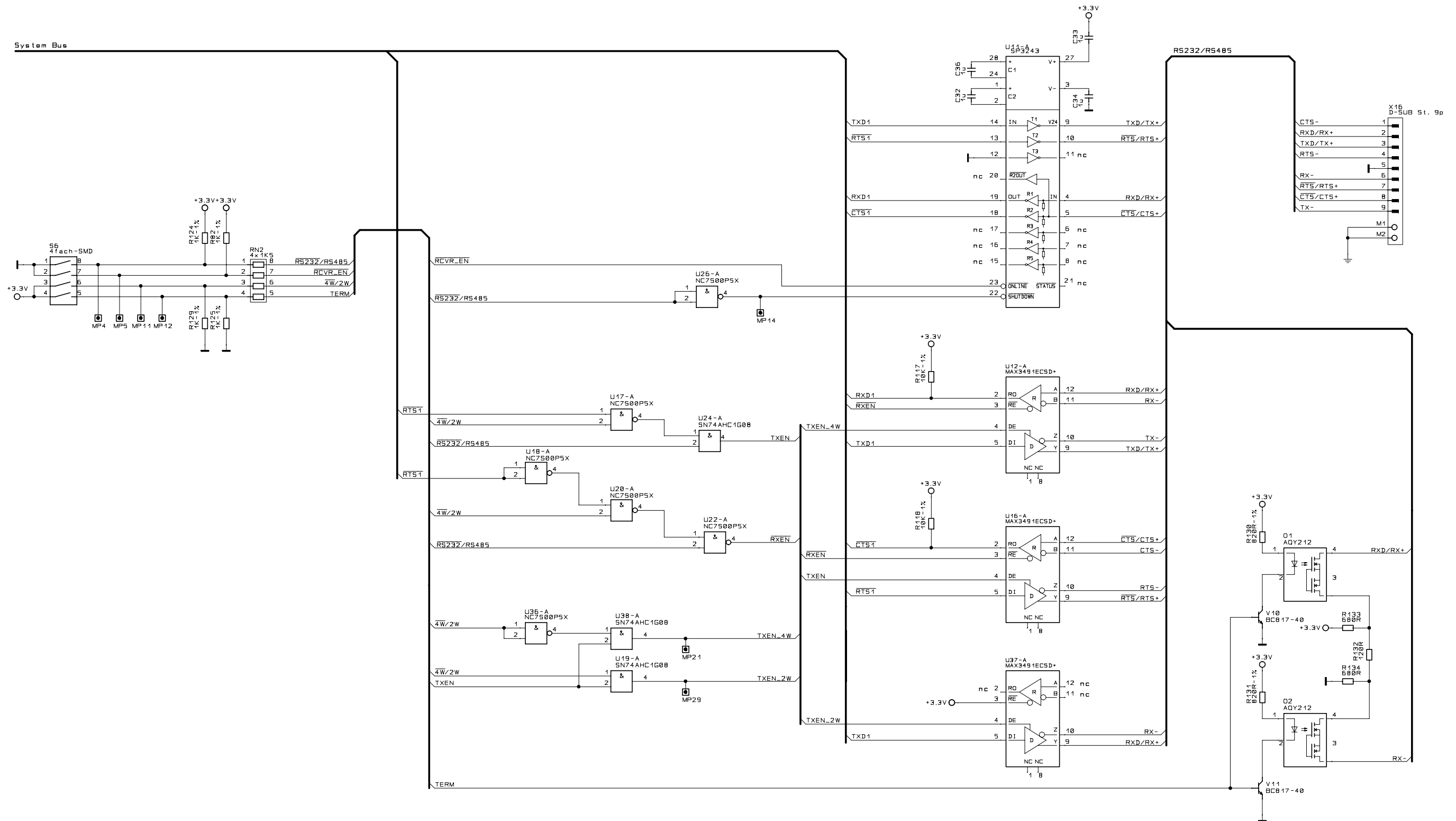
Usable for:				Scale:		Filename: JSCC9M2443.scm													
<table border="1"> <thead> <tr> <th>Designer</th> <th>Date</th> <th>Name</th> </tr> </thead> <tbody> <tr> <td> </td> <td>17.03.2009</td> <td>Hp5</td> </tr> <tr> <td> </td> <td> </td> <td> </td> </tr> <tr> <td> </td> <td> </td> <td> </td> </tr> </tbody> </table>				Designer	Date	Name		17.03.2009	Hp5							ConnectCore 9M 2443 Dev. Board ConnectCore 9M 2443 Development Board JumpStart ME1, RS232, VGA, SPI, I.C, USB Host...			
				Designer	Date	Name													
					17.03.2009	Hp5													
Power, Reset, Configuration				Partnumber:		Sheet 6 of 9													
Rev. A		Modification ECD000896		Date 17.03.2009		Name Hp5													
Provided for:				Provided by:															





Usable for:		Scale:		Filename: JSCC9M2443.scm													
<table border="1"> <thead> <tr> <th>Designer</th> <th>Date</th> <th>Name</th> </tr> </thead> <tbody> <tr> <td> </td> <td>17.03.2009</td> <td>Hp5</td> </tr> <tr> <td>Approved</td> <td> </td> <td> </td> </tr> <tr> <td>ISO</td> <td> </td> <td> </td> </tr> </tbody> </table>				Designer	Date	Name		17.03.2009	Hp5	Approved			ISO			Title: ConnectCore 9M 2443 Dev. Board ConnectCore 9M 2443 Development Board JumpStart ME1, RS232, VGA, SPI, I.C, USB Host...	
				Designer	Date	Name											
	17.03.2009	Hp5															
Approved																	
ISO																	
Partnumber:		55001412-01		Sheet 7 of 9													
Rev.	Modification	Date	Name	Provided for:													
A	ECC0000956	17.03.2009	Hp5	Provided by:													

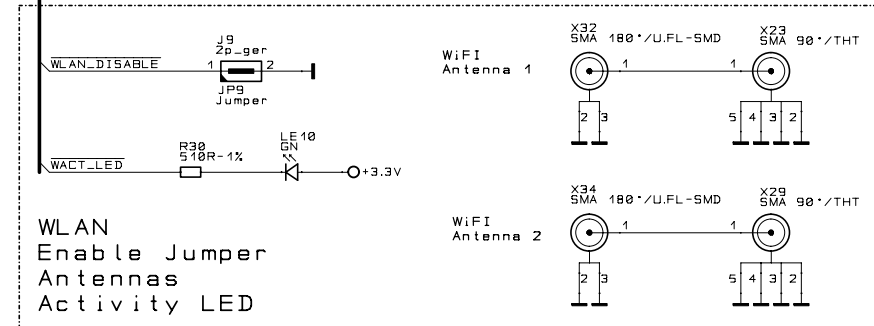
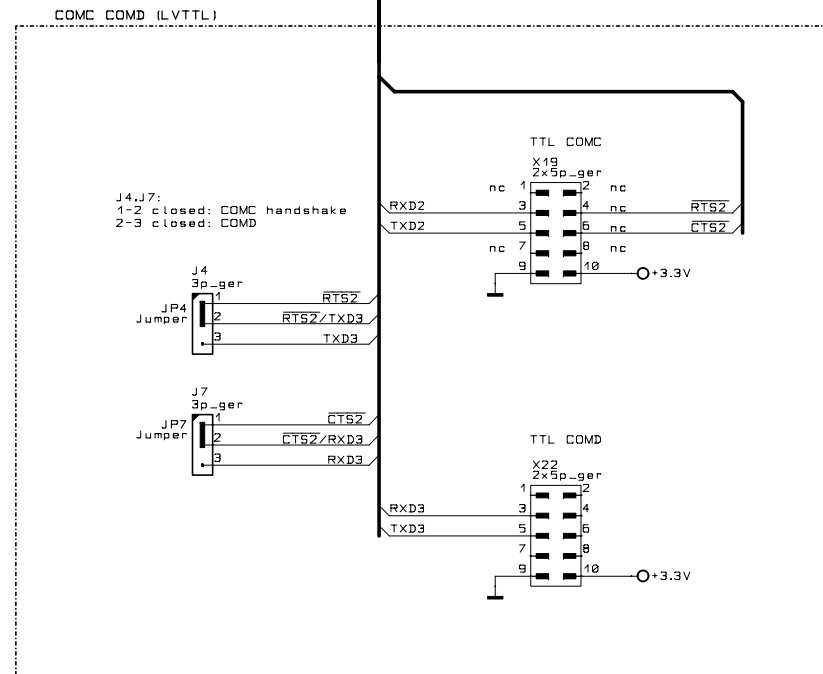
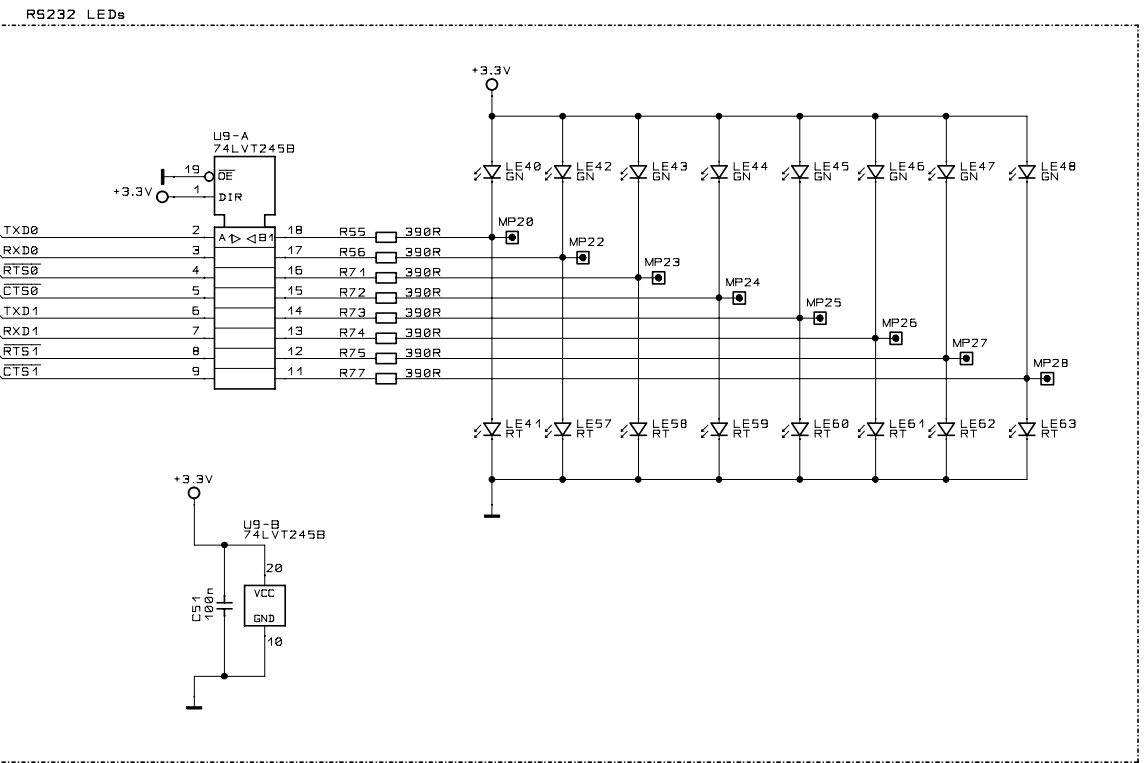
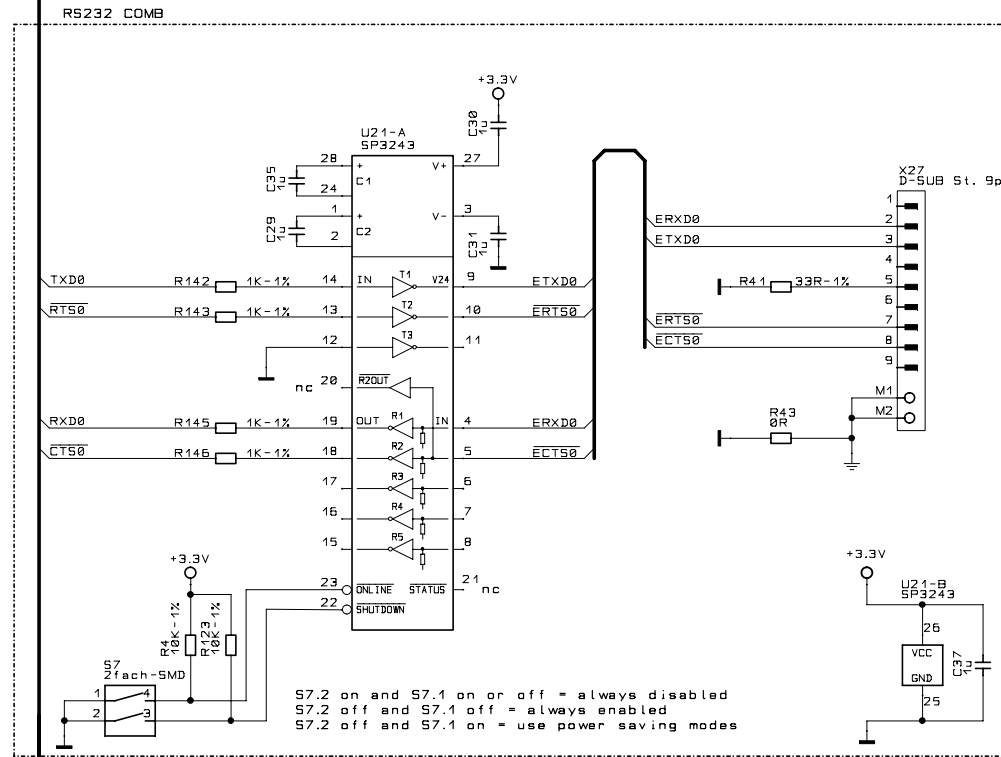




Usable for:				Scale:		Filename: JSCC9M2443.scm	
				ConnectCore 9M 2443 Dev. Board ConnectCore 9M 2443 Development Board JumpStart ME1, RS232, VGA, SPI, I.C, USB Host...			
				Title:		ME I	
				Partnumber:		5500 14 12 - 01	
				Sheet		8	
				of		9	
Rev. A		ECC0000956		Date		17.03.2009	
Designer		Hp5		Date		17.03.2009	
Approved		ISO		Name		Hp5	
ISO				Title			
Provided for:				Provided by:			

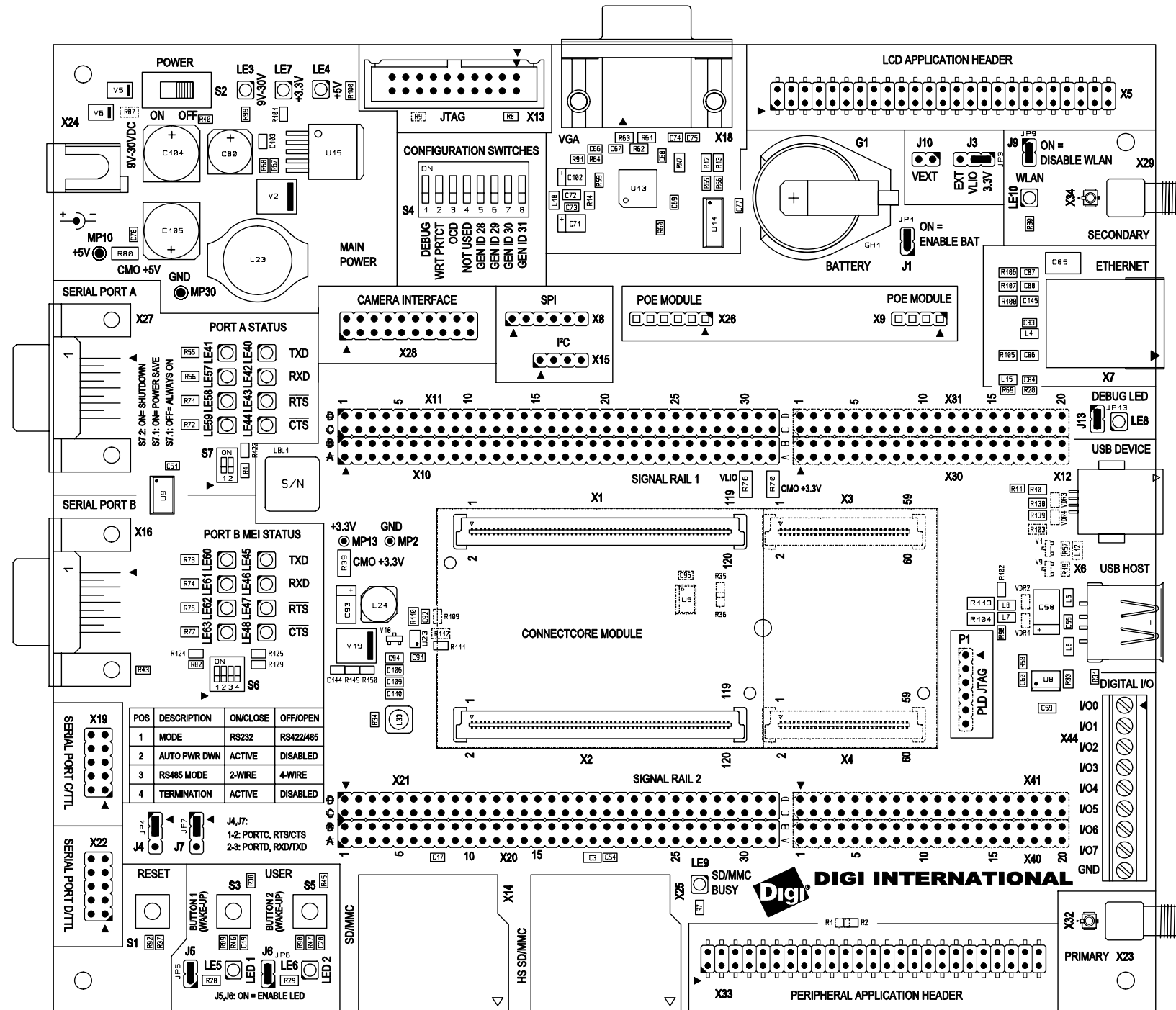


System Bus



Usable for:				Scale:		Filename: JSCC9M2443.scm	
				ConnectCore 9M 2443 Dev. Board ConnectCore 9M 2443 Development Board JumpStart ME1, RS232, VGA, SPI, I.C, USB Host...			
				Title:		Wireless, RS232	
				Partnumber:		55001412-01	
				Sheet		9	
				of		9	
Rev.	Modification	Date	Name	Provided for:		Provided by:	
A	ECC000896	17.03.2009	Hp5				

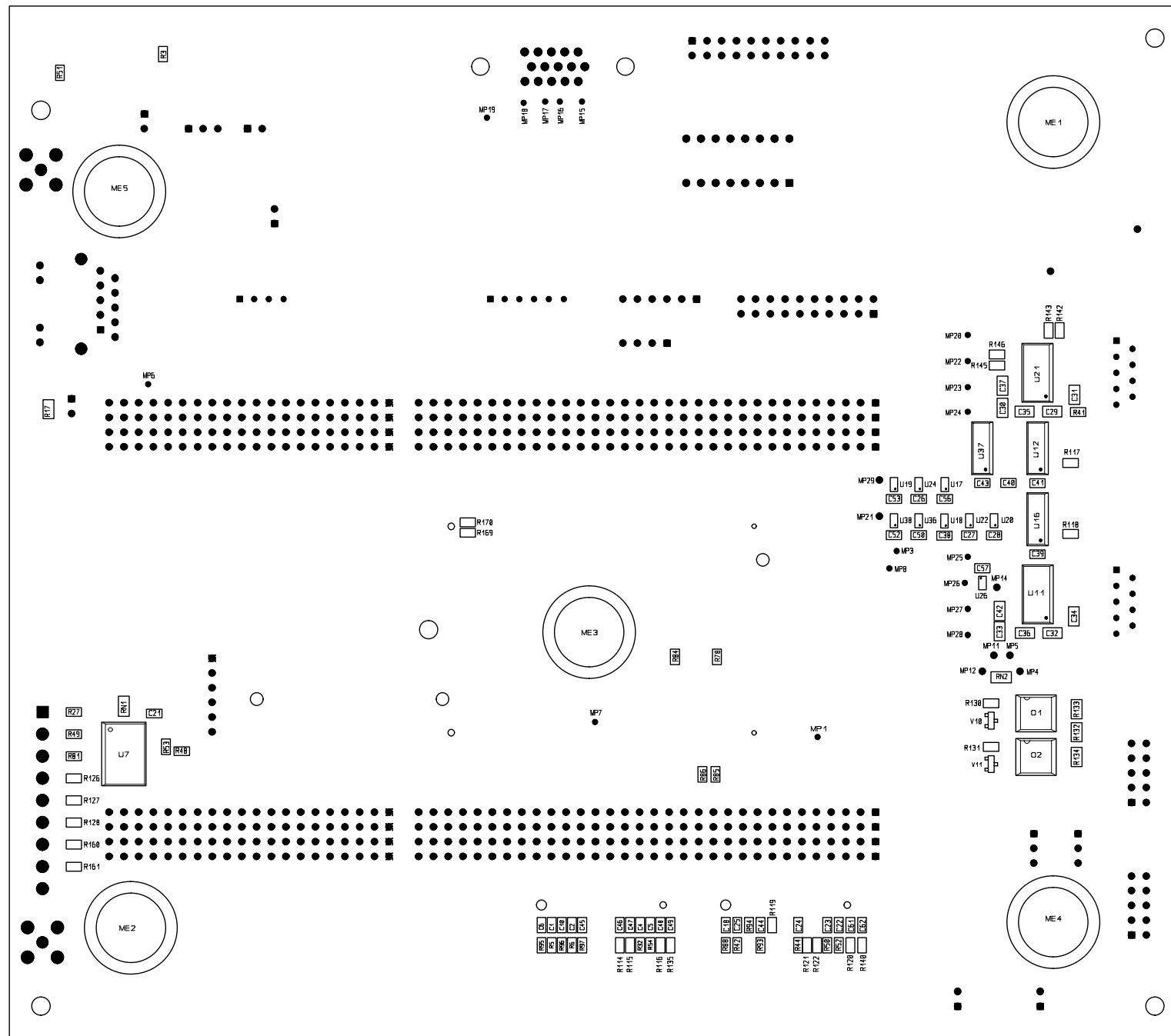





JSCC9M2443 Placement TOP 17.03.09

Usable for:				Scale:		Filename: JSCC9M2443.pcb	
				ConnectCore 9M 2443 Dev. Board ConnectCore 9M 2443 Development Board JumpStart MEI, RS232, VGA, SPI, I.C, USB Host...			
		Date		Name		Title:	
		17.03.09		SC		Placement TOP Side	
		Designer					
		Approved					
		ISO				Partnumber:	
						55001412-01	
						Sheet	
						1	
						of 2	
Rev.	Modification	Date	Name	Provided for:		Provided by:	
A	EC0000896	17.03.09	SC				





JSCC9M2443 Placement BOTTOM Side 17.03.09

Usable for:				Scale:		Filename: JSCC9M2443.pcb	
				ConnectCore 9M 2443 Dev. Board ConnectCore 9M 2443 Development Board JumpStart ME1, RS232, VGA, SPI, I.C. USB Host...			
				Designer	Date	Name	Placement Bottom Side
				Approved			
				ISO			
						Partnumber:	Sheet
						55001412-01	
				Rev.	Modification	Date	Name
				A	ECC000896	17.03.09	SC
				Provided for:		Provided by:	

1

2

3

4

5

6

7

8

9

10

11

12

A

B

C

D

E

F

G

H

1

2

3

4

5

6

A

B

C

D

E

F

G

H

1

2

3

4

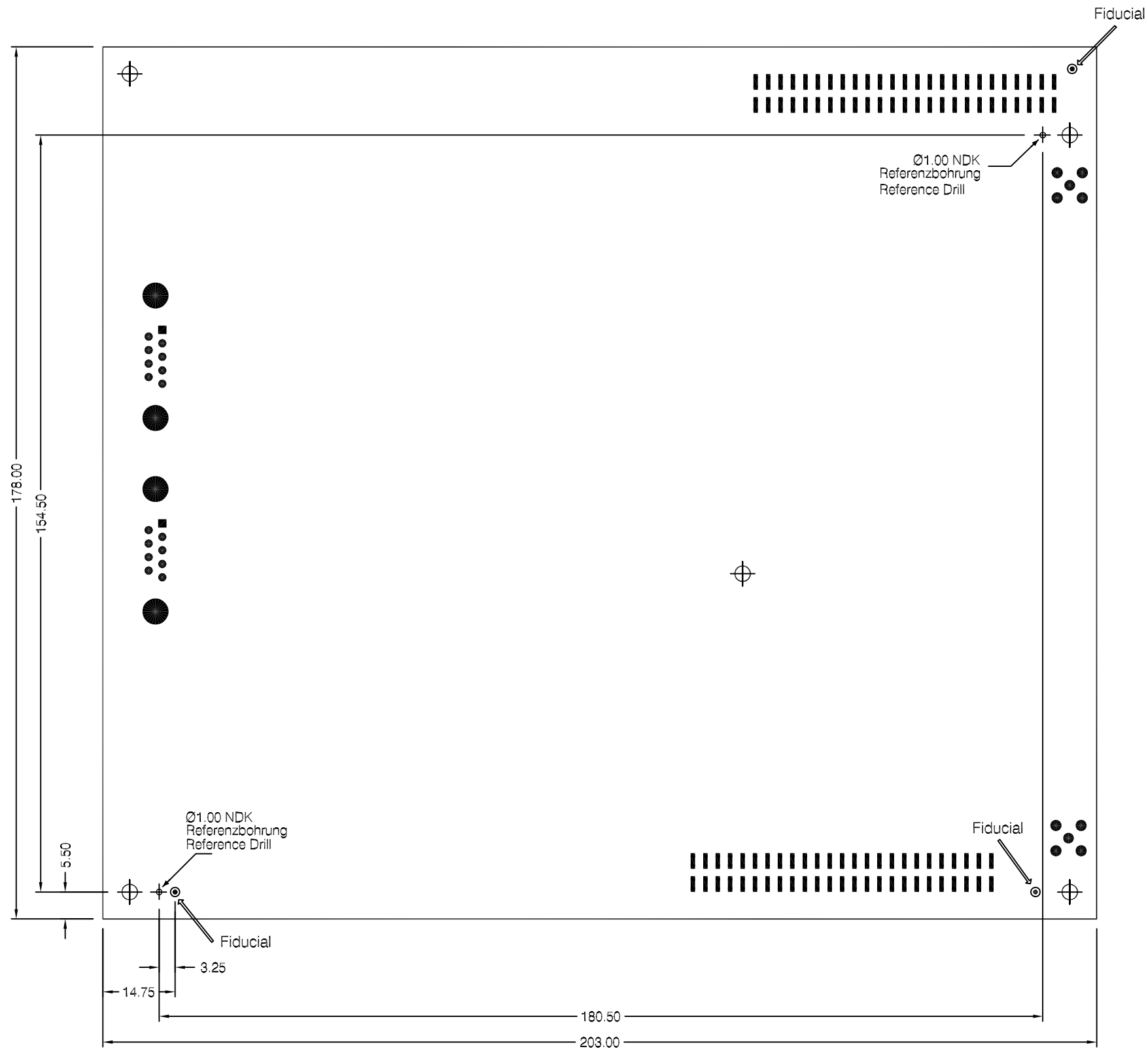
5

6

1

2

of 2



CAUTION:

- Offset between the reference drills and the fiducials: $\leq 0,1mm$.
- Offset between the milled board outline and the fiducials: $\pm 0,2mm$.
- Plated holes and not plated holes must be drilled in one step!
- Fiducials and not plated holes are already defined in the gerber/drill files!

BEACHTEN:

- Versatz der Referenzbohrungen zu den Fiducials: $\leq 0,1mm$.
- Versatz der Fräskontur zu den Fiducials: $\pm 0,2mm$.
- DK- und NDK-Bohrungen in einem Arbeitsgang bohren!
- Fiducials und NDK-Bohrungen sind bereits in den Gerber/Drill-daten vorhanden!

All dimensions in mm. Alle Massangaben in mm.				Scale: 1:1		Filename: 30010072-02_A_PCB.DWG	
Overall tolerance: $\pm 0,1mm$. Allgemeine Toleranz: $\pm 0,1mm$.				ConnectCore 9M 2443 Dev. Board			
				Title:		Dimensions TOP	
		Draw.	Date	Name			
		Appr.		SC			
		Stand.					
				Partnumber:		Sheet	
				30010072-02		1	
				of		1	
				Provided for:		Provided by:	
Rev.	Modification	Date	Name	Digi			