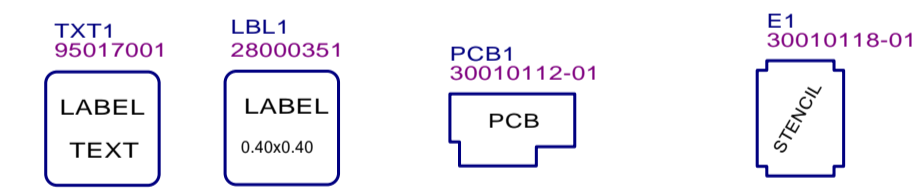

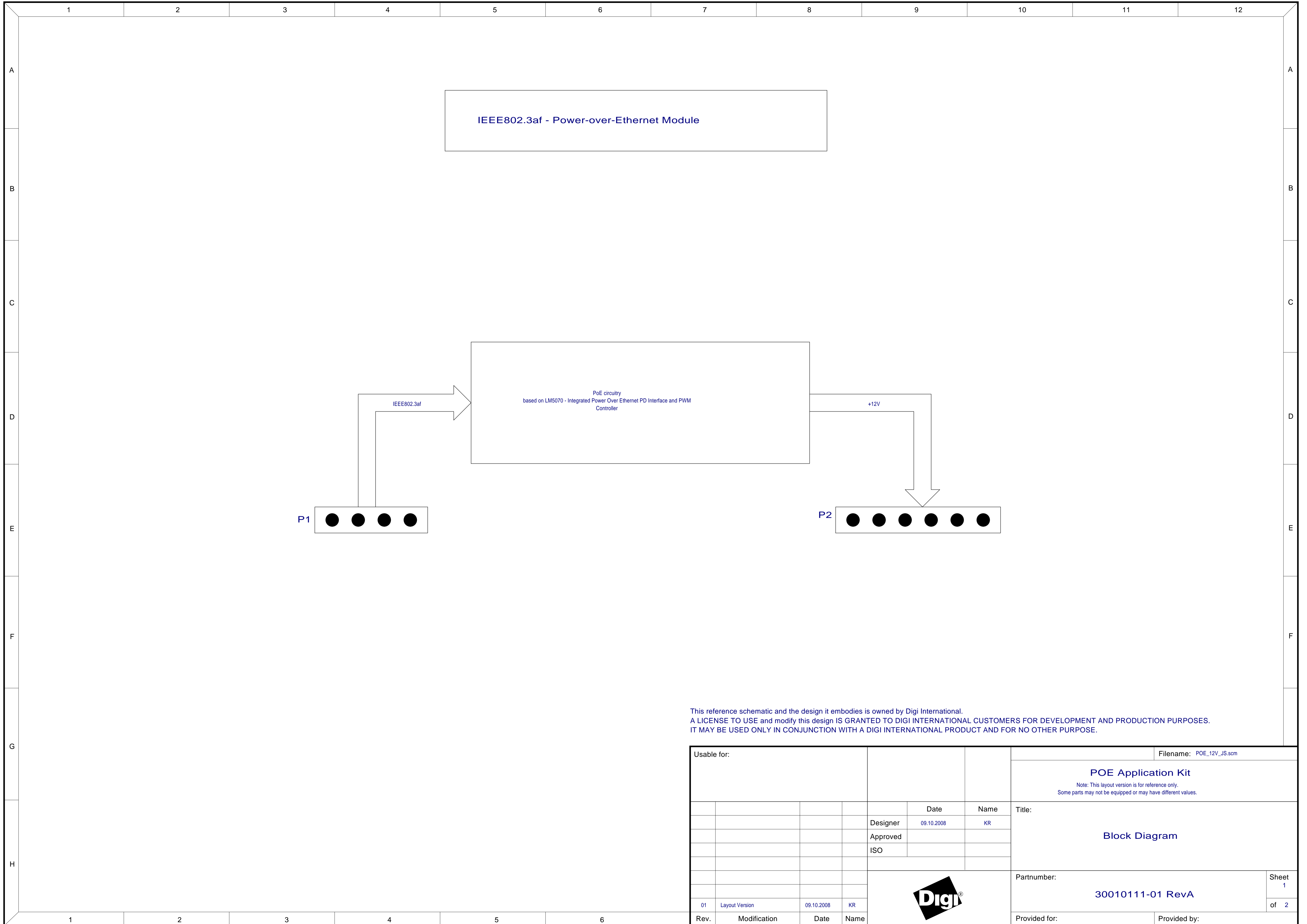


	1	2	3	4	5	6	7	8	9	10	11	12	
A													A
B													B
C													C
D													D
E													E
F													F
G													G
H													H
	1	2	3	4	5	6							




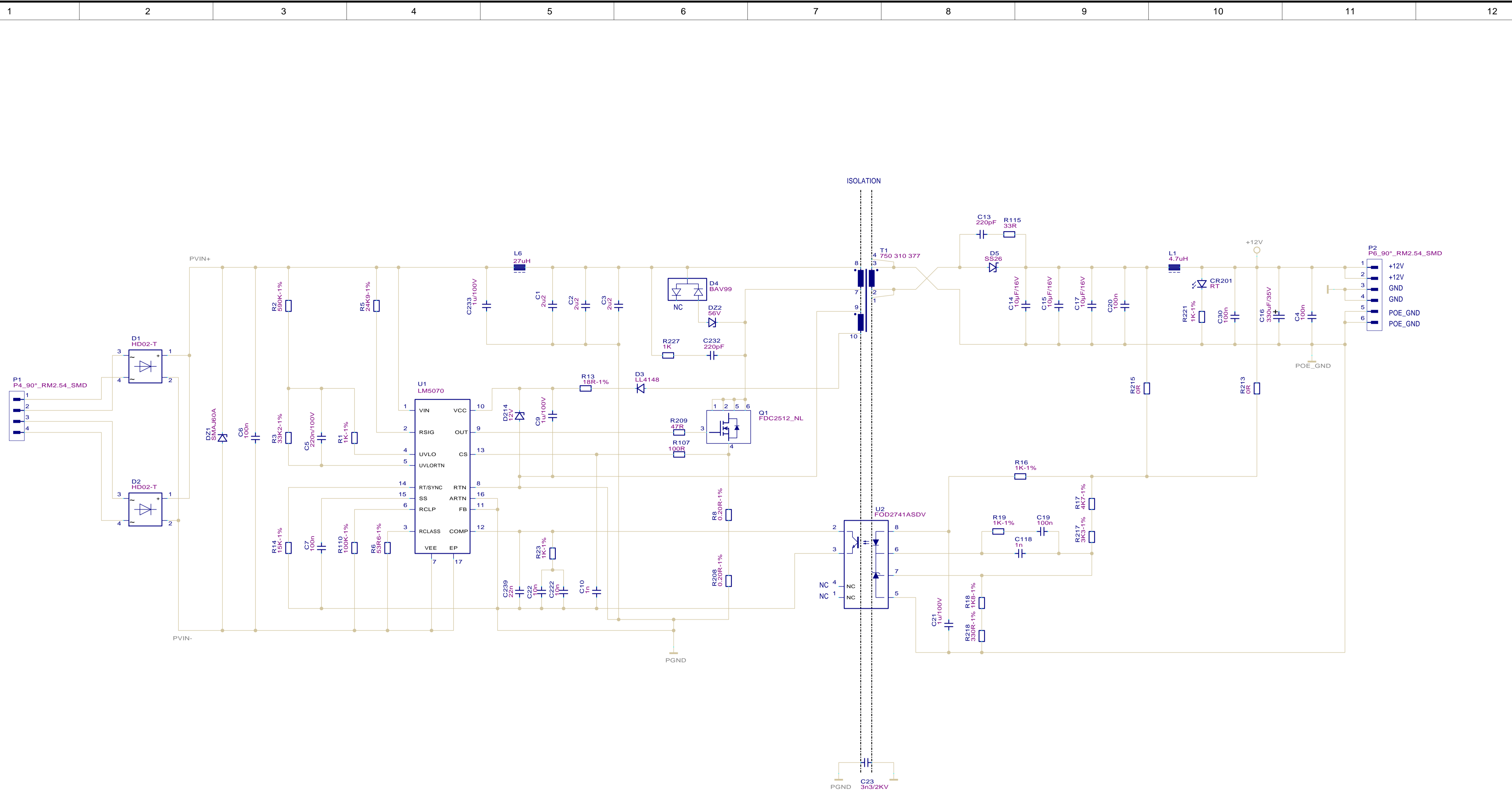
This reference schematic and the design it embodies is owned by Digi International.  
 A LICENSE TO USE and modify this design IS GRANTED TO DIGI INTERNATIONAL CUSTOMERS FOR DEVELOPMENT AND PRODUCTION PURPOSES.  
 IT MAY BE USED ONLY IN CONJUNCTION WITH A DIGI INTERNATIONAL PRODUCT AND FOR NO OTHER PURPOSE.

Usable for:								Filename: POE_12V_US.scm	
								<b>POE Application Kit</b> <small>Note: This layout version is for reference only. Some parts may not be equipped or may have different values.</small>	
					Date	Name	<b>Mechanicals</b>		
				Designer	09.10.2008	KR			
				Approved					
				ISO					
								Partnumber:	
								<b>30010111-01 RevA</b>	
01	Layout Version	09.10.2008	KR					Sheet 0	
Rev.	Modification	Date	Name					Provided for:	
								of 2	
								Provided by:	




This reference schematic and the design it embodies is owned by Digi International.  
 A LICENSE TO USE and modify this design IS GRANTED TO DIGI INTERNATIONAL CUSTOMERS FOR DEVELOPMENT AND PRODUCTION PURPOSES.  
 IT MAY BE USED ONLY IN CONJUNCTION WITH A DIGI INTERNATIONAL PRODUCT AND FOR NO OTHER PURPOSE.

Usable for:				Filename: POE_12V_US.scm	
				<b>POE Application Kit</b> <small>Note: This layout version is for reference only. Some parts may not be equipped or may have different values.</small>	
				Date	Name
			Designer	09.10.2008	KR
			Approved		
			ISO		
				<b>Block Diagram</b>	
				Partnumber:	
				<b>30010111-01 RevA</b>	
				Sheet 1	
				of 2	
01	Layout Version	09.10.2008	KR		
Rev.	Modification	Date	Name		
				Provided for:	
				Provided by:	




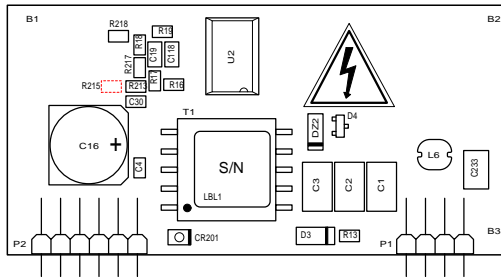
This reference schematic and the design it embodies is owned by Digi International.  
A LICENSE TO USE and modify this design IS GRANTED TO DIGI INTERNATIONAL CUSTOMERS FOR DEVELOPMENT AND PRODUCTION PURPOSES.  
IT MAY BE USED ONLY IN CONJUNCTION WITH A DIGI INTERNATIONAL PRODUCT AND FOR NO OTHER PURPOSE.

Usable for:				Filename: POE_12V_US.scm	
				<b>POE Application Kit</b> <small>Note: This layout version is for reference only. Some parts may not be equipped or may have different values.</small>	
				Title:	
				<b>12V Power Over Ethernet</b>	
				Partnumber:	
				<b>30010111-01 RevA</b>	
				Sheet	
				<b>2</b>	
				of 2	
01	Layout Version	09.10.2008	KR		
Rev.	Modification	Date	Name		
				Provided for:	
				Provided by:	

	1	2	3	4	5	6	7	8	9	10	11	12
A	<p><b>02.02.2008, POE_12V_JS_0</b> - Copy from the original design in Mentor + parts adaptations.</p> <p><b>19.09.2008, POE_12V_JS_1</b> - New Layout</p> <p><b>07.11.2008, POE_12V_JS_1</b> - final part values for stable regulation</p>											A
B												B
C												C
D												D
E												E
F												F
G												G
H												H
	1	2	3	4	5	6	7	8	9	10	11	12

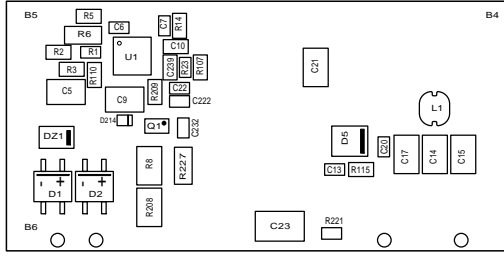
This reference schematic and the design it embodies is owned by Digi International.  
 A LICENSE TO USE and modify this design IS GRANTED TO DIGI INTERNATIONAL CUSTOMERS FOR DEVELOPMENT AND PRODUCTION PURPOSES.  
 IT MAY BE USED ONLY IN CONJUNCTION WITH A DIGI INTERNATIONAL PRODUCT AND FOR NO OTHER PURPOSE.

Usable for:							Filename: POE_12V_JS.scm	
							<b>POE Application Kit</b> <small>Note: This layout version is for reference only. Some parts may not be equipped or may have different values.</small>	
					Date	Name	Title: <b>Versionsgeschichte</b>	
				Designer	09.10.2008	KR		
				Approved				
				ISO				
							Partnumber: <b>30010111-01 RevA</b>	
01	Layout Version	09.10.2008	KR					Sheet X+1
Rev.	Modification	Date	Name			Provided for:		of 2
							Provided by:	




This reference schematic and the design it embodies is owned by Digi International  
 A LICENSE TO USE and modify this design IS GRANTED TO DIGI INTERNATIONAL CUSTOMERS FOR DEVELOPMENT AND PRODUCTION PURPOSES.  
 IT MAY BE USED ONLY IN CONJUNCTION WITH A DIGI INTERNATIONAL PRODUCT AND FOR NO OTHER PURPOSE.

Usable for:						Scale: 1.5		Filename: POE_12V_JS.pcb	
				<b>POE Application Kit</b> 12V PoE Application Module for JumpStart development boards					
				Title:  <b>Placement TOP Side</b>					
				Designer: 09.10.2008 SC Approved: ISO:					
				Date: Name 09.10.2008 SC					
				C1 ECO003561 10.04.12 DLS C ECO000687 11.11.08 SC B ECO000608 09.10.08 SC 01 Initial Version 14.03.08 SC					
				Partnumber:  <b>55001356-01</b>		Sheet <b>1</b>			
				Provided for:		Provided by:			
				Rev. Modification Date Name					
				of 2					



This reference schematic and the design it embodies is owned by Digi International.  
 A LICENSE TO USE and modify this design IS GRANTED TO DIGI INTERNATIONAL CUSTOMERS FOR DEVELOPMENT AND PRODUCTION PURPOSES.  
 IT MAY BE USED ONLY IN CONJUNCTION WITH A DIGI INTERNATIONAL PRODUCT AND FOR NO OTHER PURPOSE.

Usable for:				Scale: 1.5		Filename: POE_12V_JS.pcb		
				<b>POE Application Kit</b> 12V PoE Application Module for JumpStart development boards				
				Date	Name	Title:  <b>Placement Bottom Side</b>		
				Designer	SC			
				Approved				
				ISO				
C1	ECO003561	10.04.12	DLS			Partnumber:  <b>55001356-01</b>		
C	ECO000687	11.11.08	SC					Sheet
B	ECO000608	09.10.08	SC					2
01	Initial Version	14.03.08	SC					of 2
Rev.	Modification	Date	Name			Provided for:	Provided by:	