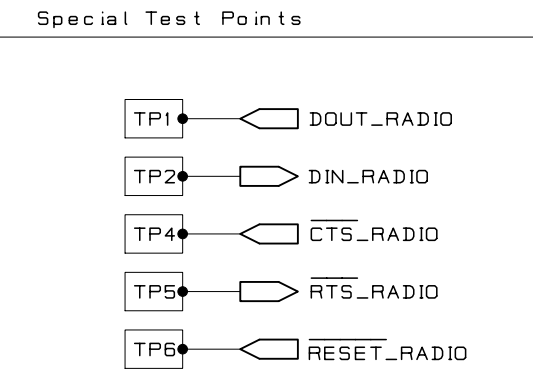
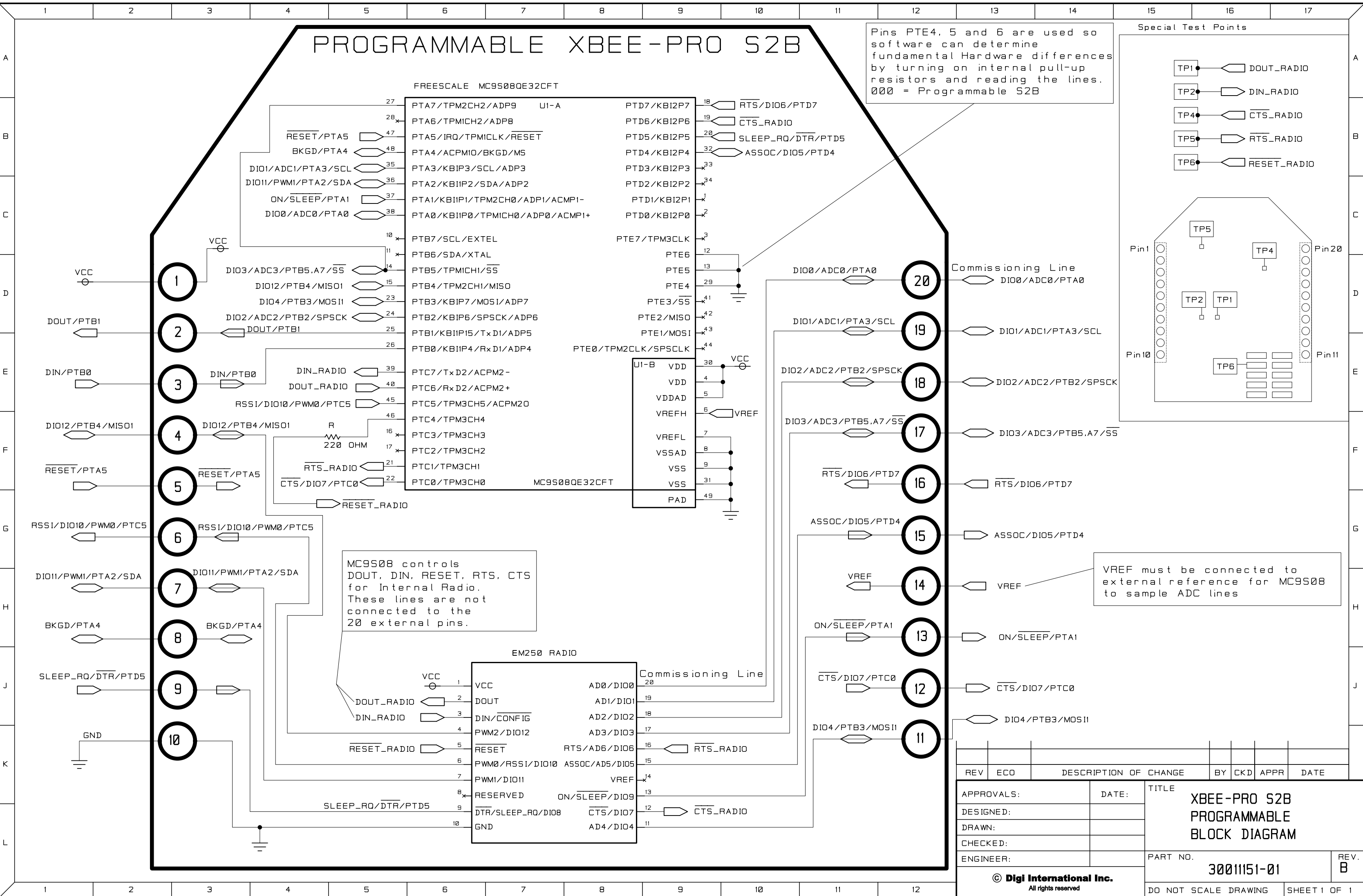


# PROGRAMMABLE XBEE-PRO S2B

Pins PTE4, 5 and 6 are used so software can determine fundamental Hardware differences by turning on internal pull-up resistors and reading the lines. 000 = Programmable S2B



FREESCALE MC9S08QE32CFT



MC9S08 controls DOUT, DIN, RESET, RTS, CTS for Internal Radio. These lines are not connected to the 20 external pins.

VREF must be connected to external reference for MC9S08 to sample ADC lines

REV	ECO	DESCRIPTION OF CHANGE	BY	CKD	APPR	DATE

APPROVALS:	DATE:	TITLE
DESIGNED:		XBEE-PRO S2B PROGRAMMABLE BLOCK DIAGRAM
DRAWN:		
CHECKED:		
ENGINEER:		
PART NO.		REV.
3001151-01		B
DO NOT SCALE DRAWING		SHEET 1 OF 1

© Digi International Inc. All rights reserved